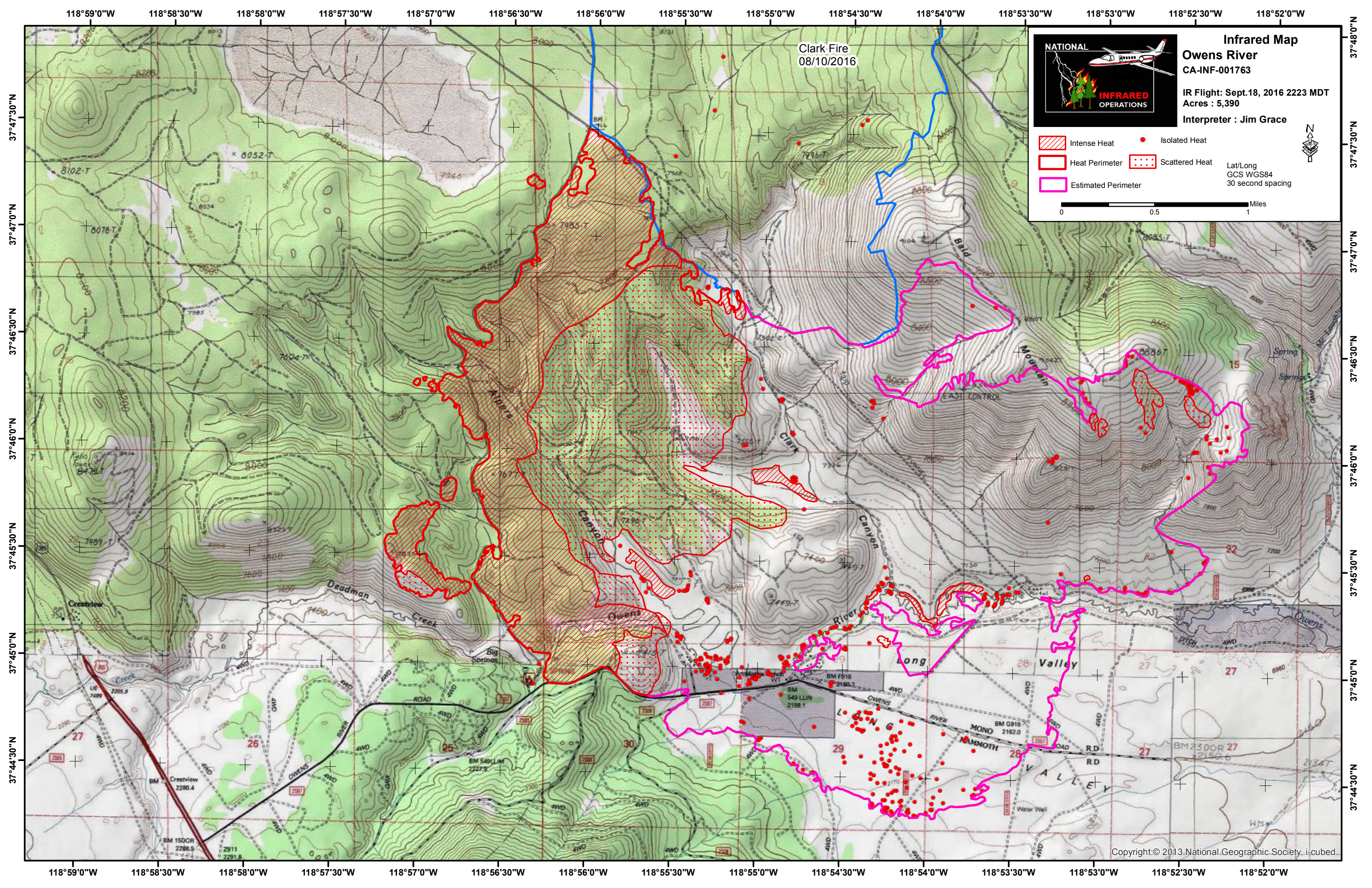
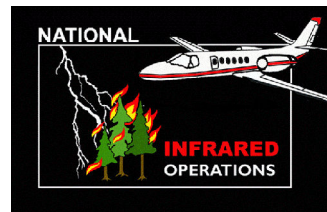


118°59'0"W 118°58'30"W 118°58'0"W 118°57'30"W 118°57'0"W 118°56'30"W 118°56'0"W 118°55'30"W 118°55'0"W 118°54'30"W 118°54'0"W 118°53'30"W 118°53'0"W 118°52'30"W 118°52'0"W



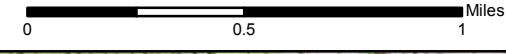
Clark Fire  
08/10/2016



**Infrared Map**  
**Owens River**  
CA-INF-001763  
IR Flight: Sept. 18, 2016 2223 MDT  
Acres : 5,390  
Interpreter : Jim Grace

- Intense Heat
- Heat Perimeter
- Estimated Perimeter
- Isolated Heat
- Scattered Heat

Lat/Long  
GCS WGS84  
30 second spacing



37°47'30"N  
37°47'0"N  
37°46'30"N  
37°46'0"N  
37°45'30"N  
37°45'0"N  
37°44'30"N

37°48'0"N  
37°47'30"N  
37°47'0"N  
37°46'30"N  
37°46'0"N  
37°45'30"N  
37°45'0"N  
37°44'30"N

118°59'0"W 118°58'30"W 118°58'0"W 118°57'30"W 118°57'0"W 118°56'30"W 118°56'0"W 118°55'30"W 118°55'0"W 118°54'30"W 118°54'0"W 118°53'30"W 118°53'0"W 118°52'30"W 118°52'0"W