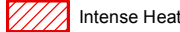

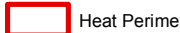
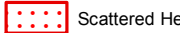


118°59'0"W 118°58'30"W 118°58'0"W 118°57'30"W 118°57'0"W 118°56'30"W 118°56'0"W 118°55'30"W 118°55'0"W 118°54'30"W 118°54'0"W 118°53'30"W 118°53'0"W 118°52'30"W 118°52'0"W

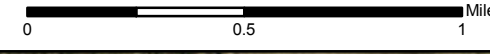
Clark Fire  
08/10/2016



**Infrared Map**  
**Owens River**  
CA-INF-001763  
IR Flight: Sept. 19, 2016 2312 MDT  
Acres : 5,435  
Interpreter : Jim Grace

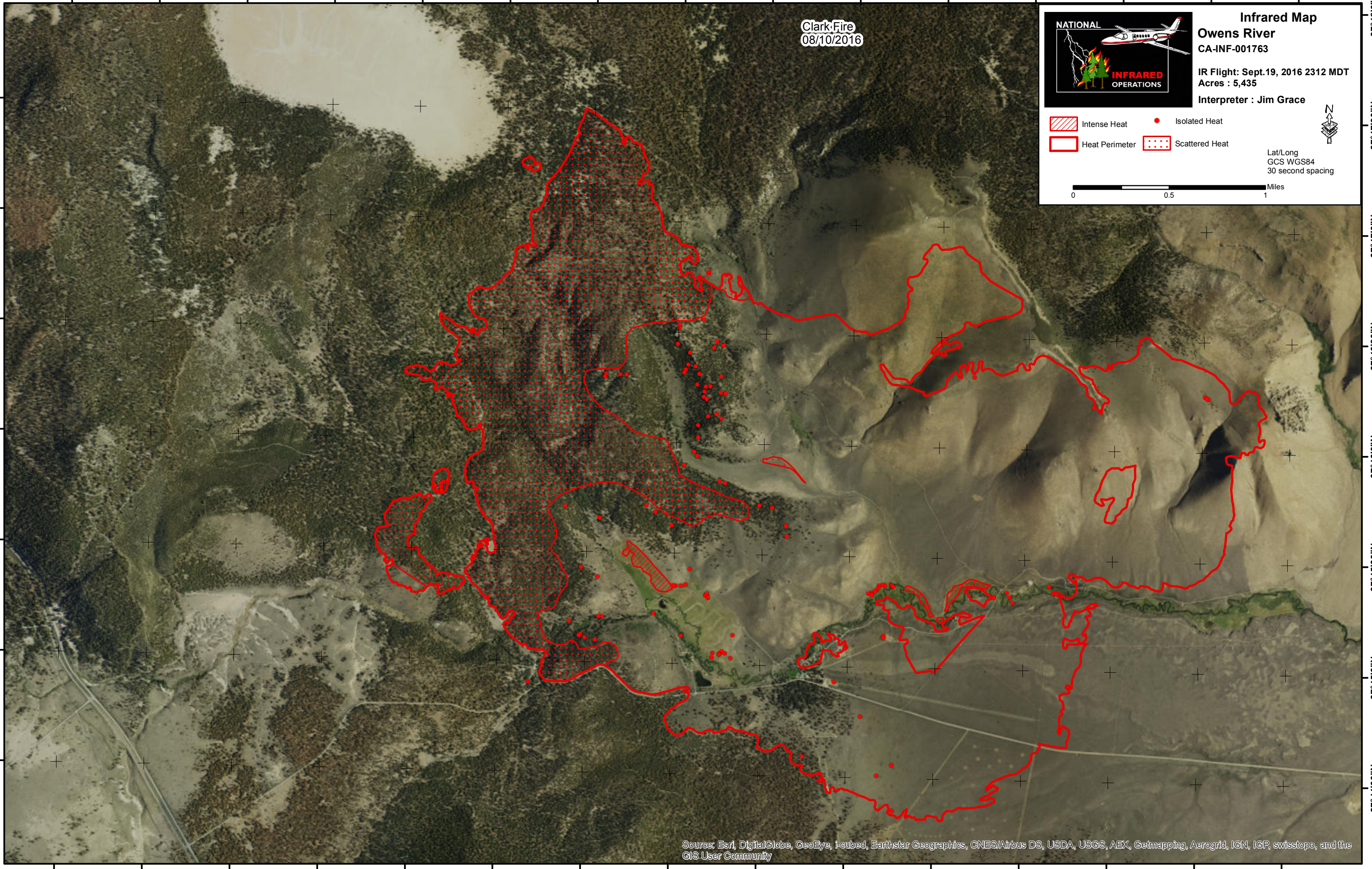
-  Intense Heat
-  Isolated Heat
-  Heat Perimeter
-  Scattered Heat

Lat/Long  
GCS WGS84  
30 second spacing



37°47'30"N  
37°47'0"N  
37°46'30"N  
37°46'0"N  
37°45'30"N  
37°45'0"N  
37°44'30"N

37°48'0"N  
37°47'30"N  
37°47'0"N  
37°46'30"N  
37°46'0"N  
37°45'30"N  
37°45'0"N  
37°44'30"N



Source: Esri, DigitalGlobe, GeoEye, i-cubed, Earthstar Geographics, CNES/Airbus DS, USDA, USGS, AEX, Getmapping, Aerogrid, IGN, IGP, swisstopo, and the GIS User Community

118°59'0"W 118°58'30"W 118°58'0"W 118°57'30"W 118°57'0"W 118°56'30"W 118°56'0"W 118°55'30"W 118°55'0"W 118°54'30"W 118°54'0"W 118°53'30"W 118°53'0"W 118°52'30"W 118°52'0"W