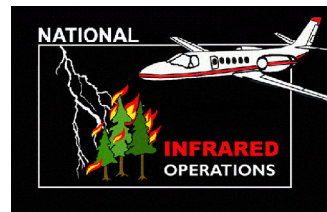


118°59'0"W 118°58'30"W 118°58'0"W 118°57'30"W 118°57'0"W 118°56'30"W 118°56'0"W 118°55'30"W 118°55'0"W 118°54'30"W 118°54'0"W 118°53'30"W 118°53'0"W 118°52'30"W 118°52'0"W

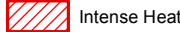
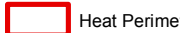

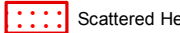
37°47'30"N
37°47'0"N
37°46'30"N
37°46'0"N
37°45'30"N
37°45'0"N
37°44'30"N

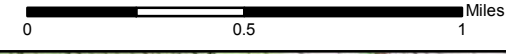
37°48'0"N
37°47'30"N
37°47'0"N
37°46'30"N
37°46'0"N
37°45'30"N
37°45'0"N
37°44'30"N

Clark Fire
08/10/2016

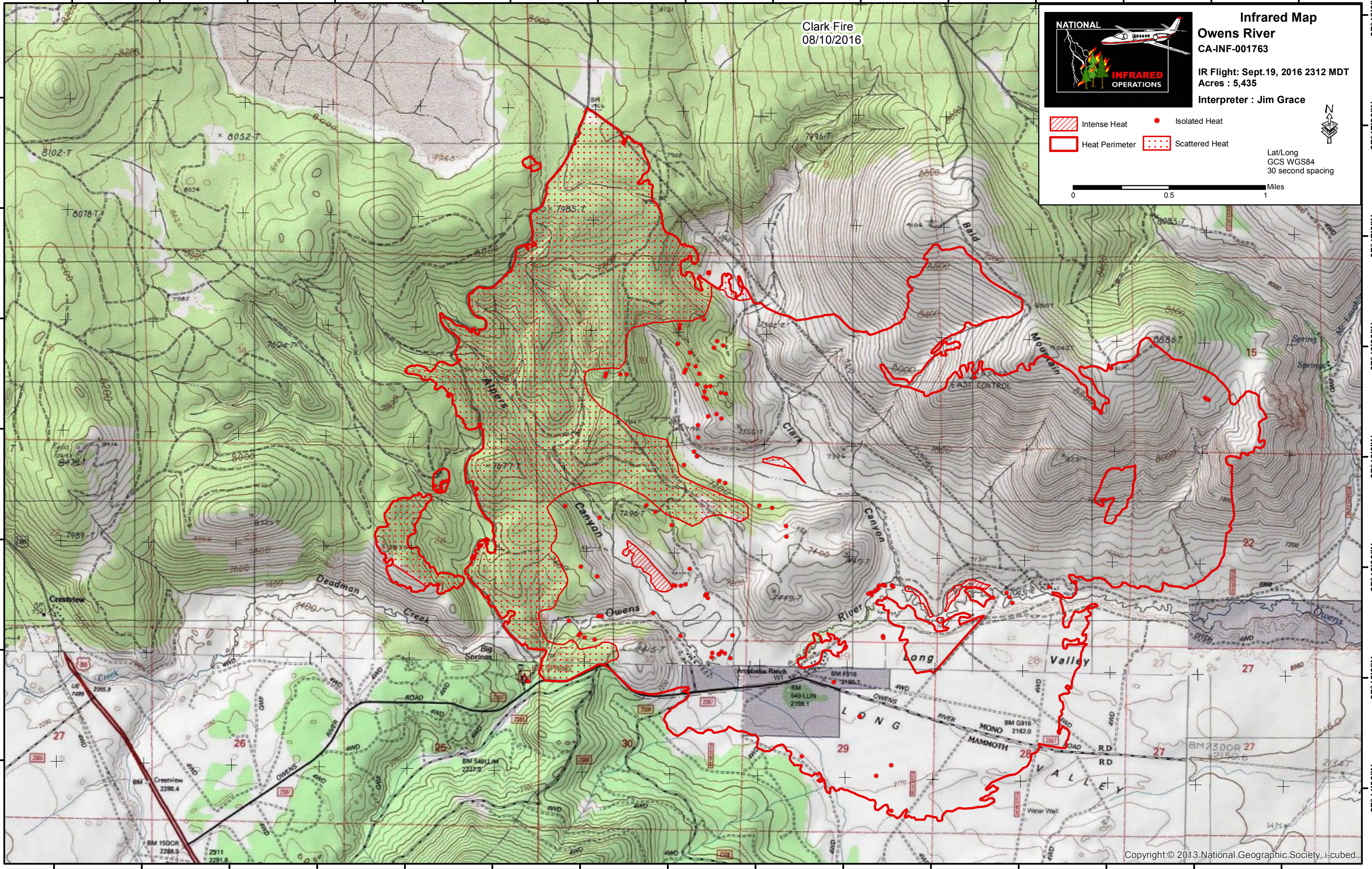


Infrared Map
Owens River
CA-INF-001763
IR Flight: Sept. 19, 2016 2312 MDT
Acres : 5,435
Interpreter : Jim Grace

-  Intense Heat
-  Heat Perimeter
-  Isolated Heat
-  Scattered Heat



Lat/Long
GCS WGS84
30 second spacing



118°59'0"W 118°58'30"W 118°58'0"W 118°57'30"W 118°57'0"W 118°56'30"W 118°56'0"W 118°55'30"W 118°55'0"W 118°54'30"W 118°54'0"W 118°53'30"W 118°53'0"W 118°52'30"W 118°52'0"W