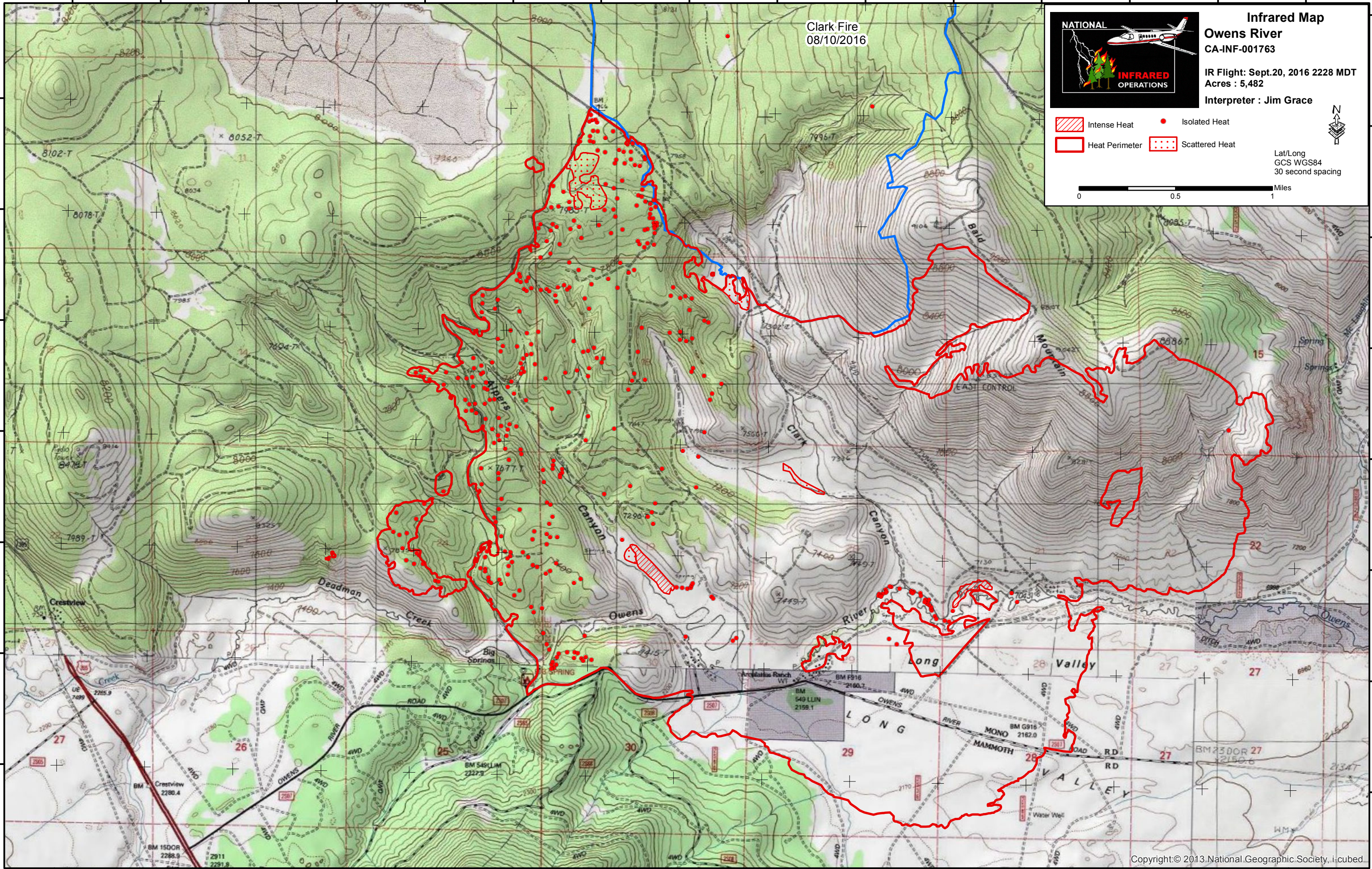


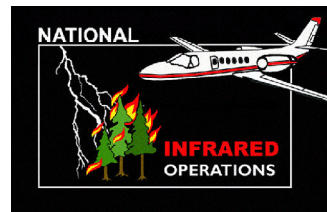
118°59'0"W 118°58'30"W 118°58'0"W 118°57'30"W 118°57'0"W 118°56'30"W 118°56'0"W 118°55'30"W 118°55'0"W 118°54'30"W 118°54'0"W 118°53'30"W 118°53'0"W 118°52'30"W 118°52'0"W

37°47'30"N  
37°47'0"N  
37°46'30"N  
37°46'0"N  
37°45'30"N  
37°45'0"N  
37°44'30"N

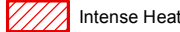
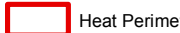

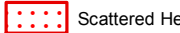
37°48'0"N  
37°47'30"N  
37°47'0"N  
37°46'30"N  
37°46'0"N  
37°45'30"N  
37°45'0"N  
37°44'30"N



Clark Fire  
08/10/2016



**Infrared Map**  
**Owens River**  
CA-INF-001763  
IR Flight: Sept.20, 2016 2228 MDT  
Acres : 5,482  
Interpreter : Jim Grace

-  Intense Heat
-  Heat Perimeter
-  Isolated Heat
-  Scattered Heat



Lat/Long  
GCS WGS84  
30 second spacing

