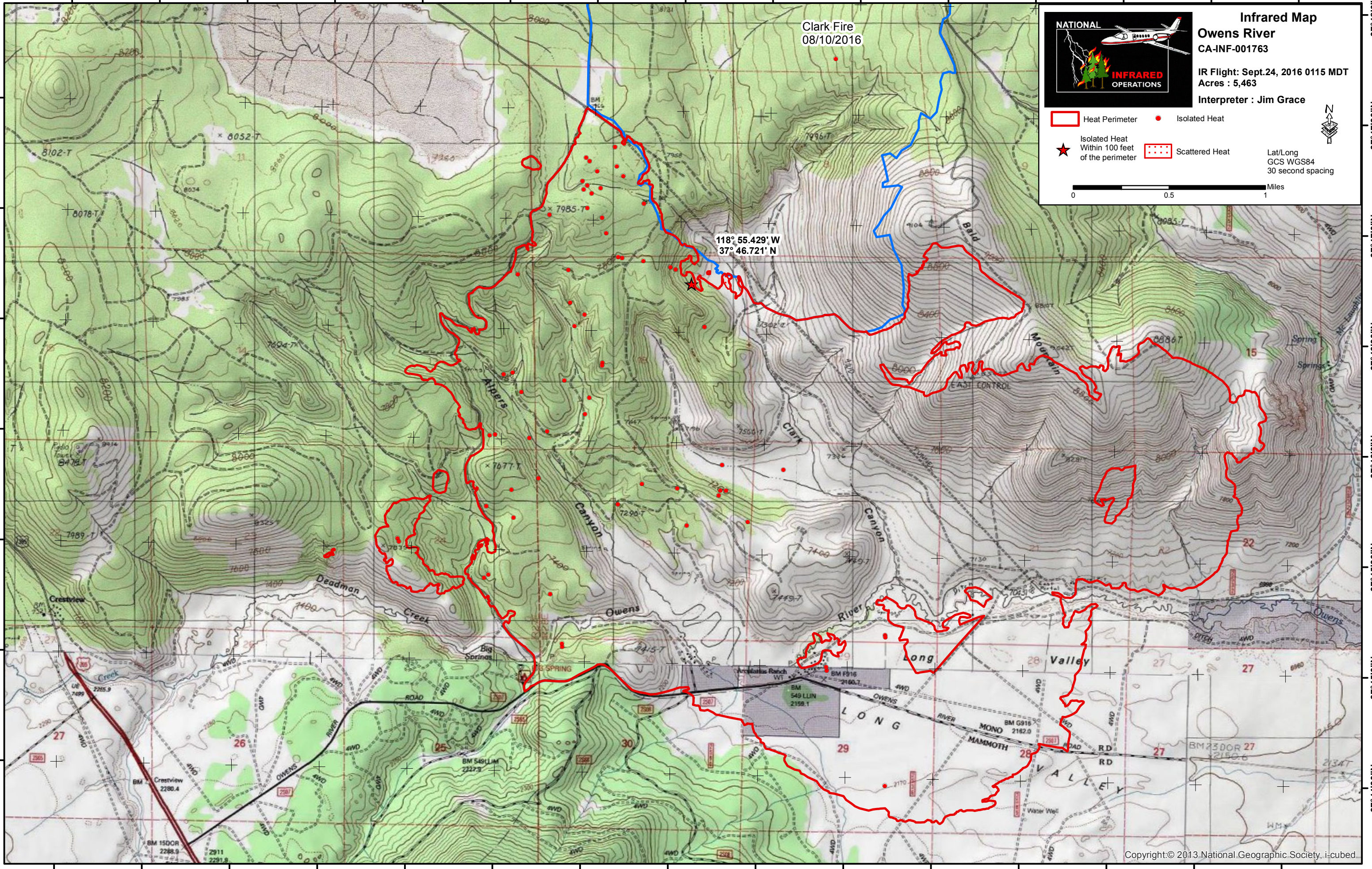


118°59'0"W 118°58'30"W 118°58'0"W 118°57'30"W 118°57'0"W 118°56'30"W 118°56'0"W 118°55'30"W 118°55'0"W 118°54'30"W 118°54'0"W 118°53'30"W 118°53'0"W 118°52'30"W 118°52'0"W

37°47'30"N
37°47'0"N
37°46'30"N
37°46'0"N
37°45'30"N
37°45'0"N
37°44'30"N

37°48'0"N
37°47'30"N
37°47'0"N
37°46'30"N
37°46'0"N
37°45'30"N
37°45'0"N
37°44'30"N



Clark Fire
08/10/2016

118° 55.429' W
37° 46.721' N

NATIONAL INFRARED OPERATIONS

Infrared Map
Owens River
CA-INF-001763

IR Flight: Sept.24, 2016 0115 MDT
Acres : 5,463
Interpreter : Jim Grace

Heat Perimeter (Red outline)
Isolated Heat (Red dot)
Isolated Heat Within 100 feet of the perimeter (Red star)
Scattered Heat (Red dotted area)

Lat/Long
GCS WGS84
30 second spacing

0 0.5 1 Miles

118°59'0"W 118°58'30"W 118°58'0"W 118°57'30"W 118°57'0"W 118°56'30"W 118°56'0"W 118°55'30"W 118°55'0"W 118°54'30"W 118°54'0"W 118°53'30"W 118°53'0"W 118°52'30"W 118°52'0"W