



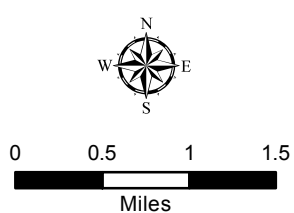
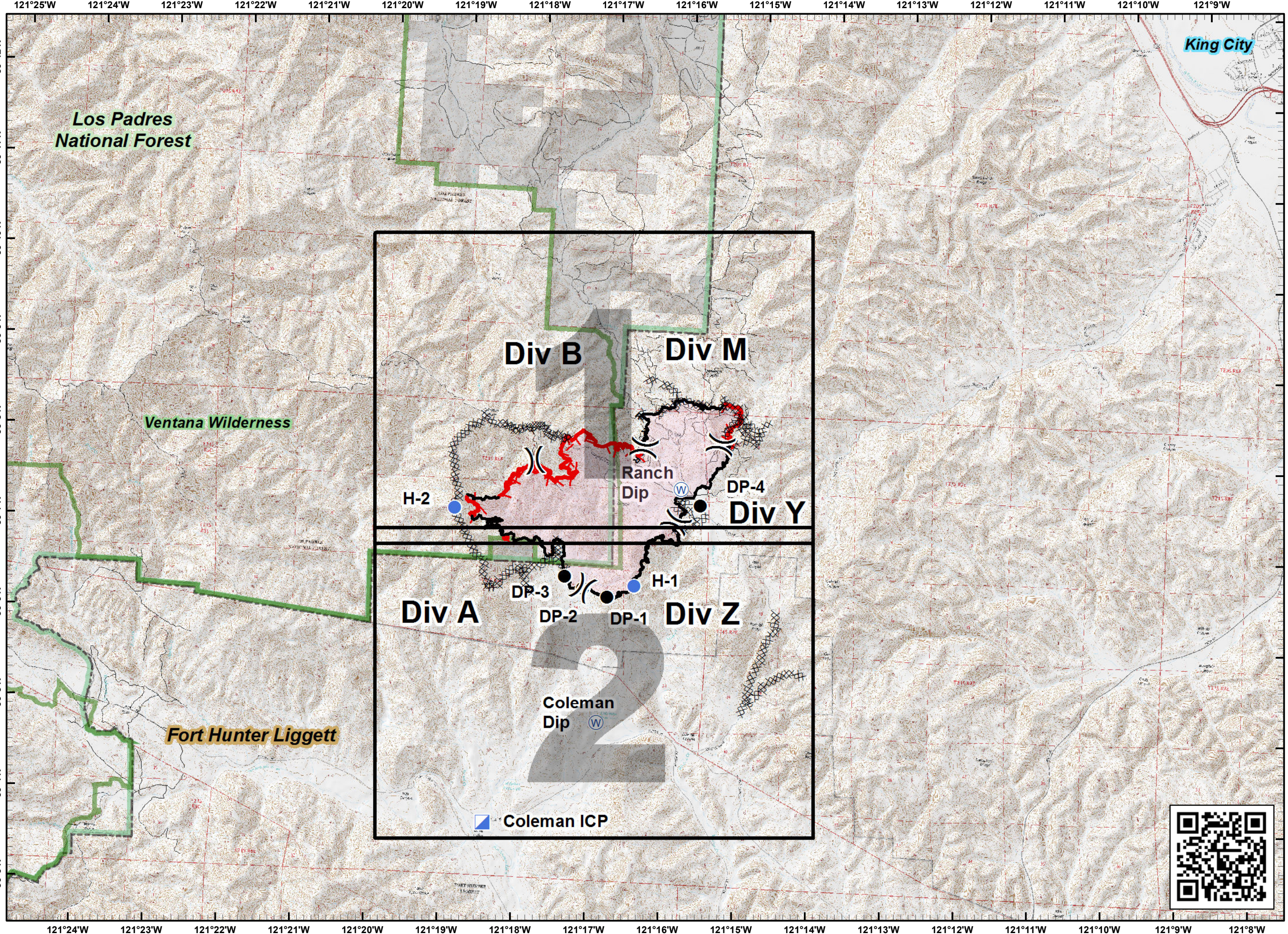
# COLEMAN FIRE CA-LPF-001504

## IAP Map Index

June 9, 2016  
2,520 acres

Approximate Perimeter as  
of 6/7/2016 @ 2348 hrs

- Coleman Fire
- Uncontrolled Fire Edge
- R - R Road as Completed Line
- Contained Fire Edge
- Completed Dozer Line
- H - H Hand Line
- Division Break
- Drop Point
- Helispot
- Incident Command Post
- Water Source
- Los Padres N. F.
- Ventana Wilderness
- Private Land w/in Forest Boundary



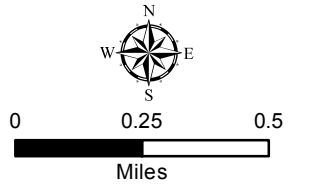
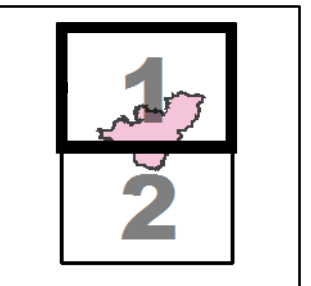
20 ft Contours  
NAD 83 UTM Zone 11



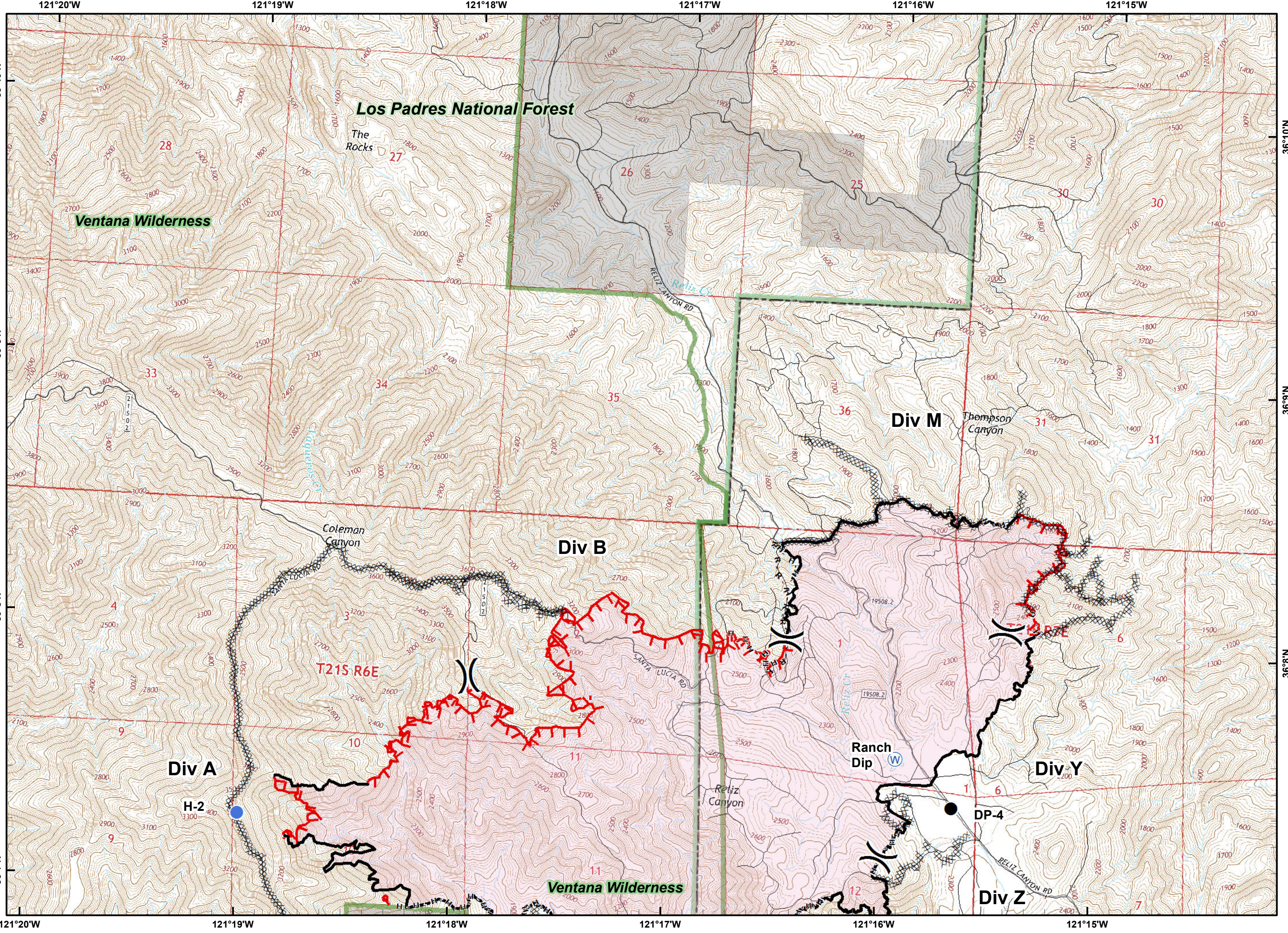
# COLEMAN FIRE CA-LPF-001504

IAP Maps  
June 9, 2016  
Day Shift  
2,520 acres  
Approximate Perimeter as  
of 6/7/2016 @ 2348 hrs

- Coleman Fire
- Uncontrolled Fire Edge
- R - R Road as Completed Line
- Contained Fire Edge
- Completed Dozer Line
- H - H Hand Line
- Division Break
- Drop Point
- Helispot
- Incident Command Post
- Water Source
- Los Padres N. F.
- Ventana Wilderness
- Private Land w/in Forest Boundary



20 ft Contours  
NAD 83 UTM Zone 11

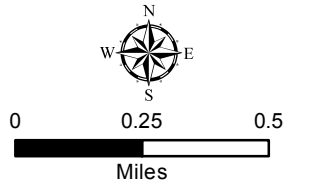
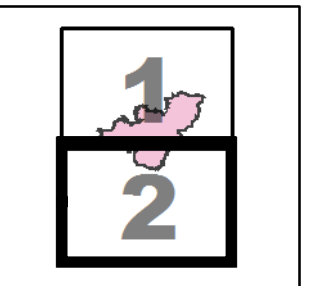




# COLEMAN FIRE CA-LPF-001504

IAP Maps  
June 9, 2016  
Day Shift  
2,520 acres  
Approximate Perimeter as  
of 6/7/2016 @ 2348 hrs

- Coleman Fire
- Uncontrolled Fire Edge
- R - R Road as Completed Line
- Contained Fire Edge
- Completed Dozer Line
- H - H Hand Line
- Division Break
- Drop Point
- Helispot
- Incident Command Post
- Water Source
- Los Padres N. F.
- Ventana Wilderness
- Private Land w/in Forest Boundary



20 ft Contours  
NAD 83 UTM Zone 11

