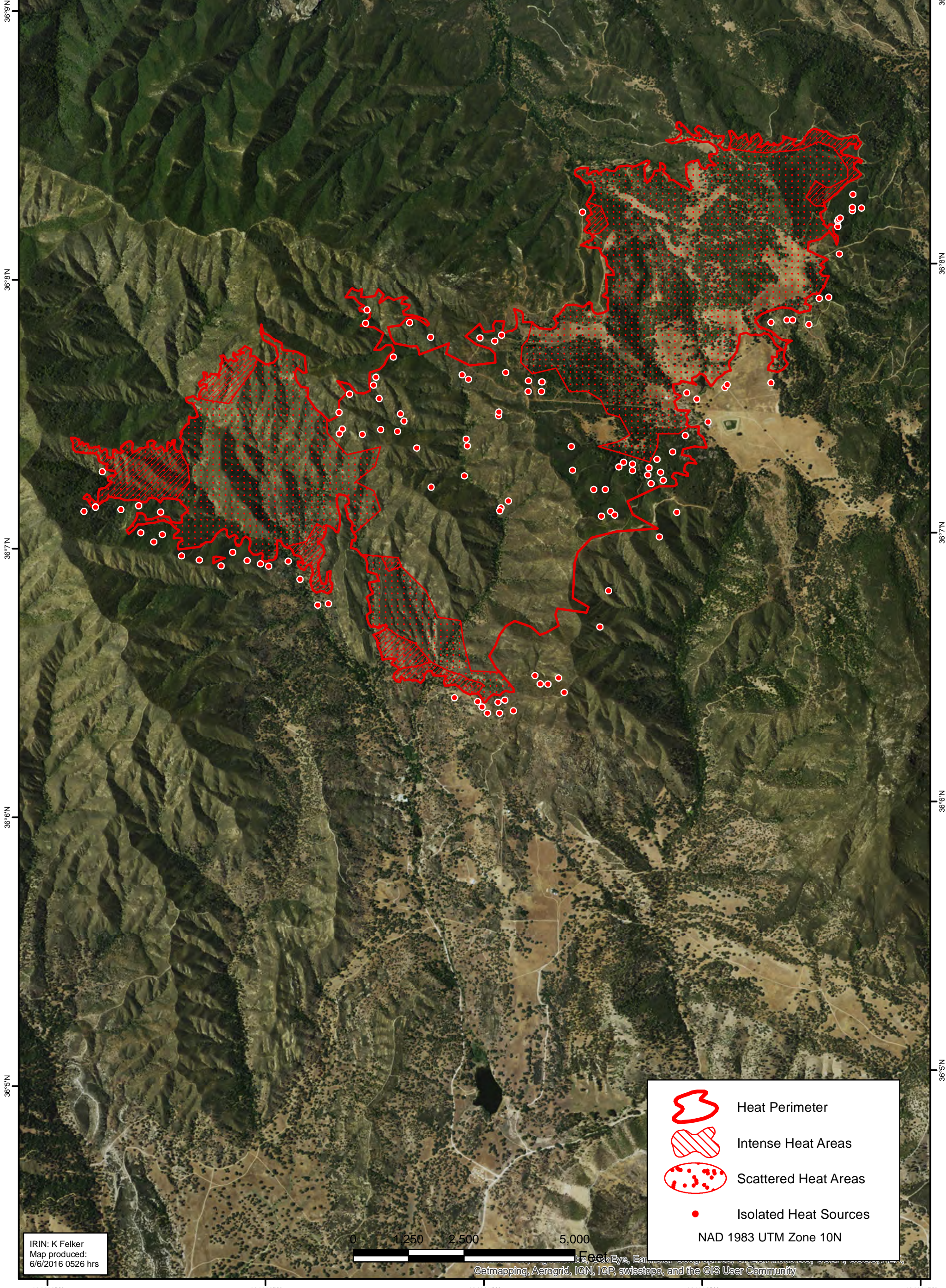






121°19'W 121°18'W 121°17'W 121°16'W 121°15'W

Colemanr Fire
Heat Acres: 1,955
CA-LPF-001504
Infrared Interpretation
Imagery Date:
06/06/2016 0314 Hrs

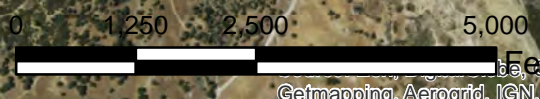


36°9'N
36°8'N
36°7'N
36°6'N
36°5'N

36°9'N
36°8'N
36°7'N
36°6'N
36°5'N

-  Heat Perimeter
 -  Intense Heat Areas
 -  Scattered Heat Areas
 -  Isolated Heat Sources
- NAD 1983 UTM Zone 10N

IRIN: K Felker
Map produced:
6/6/2016 0526 hrs



Getmapping, Aerogrid, IGN, IGP, swisstopo, and the GIS User Community

121°19'W 121°18'W 121°17'W 121°16'W 121°15'W