












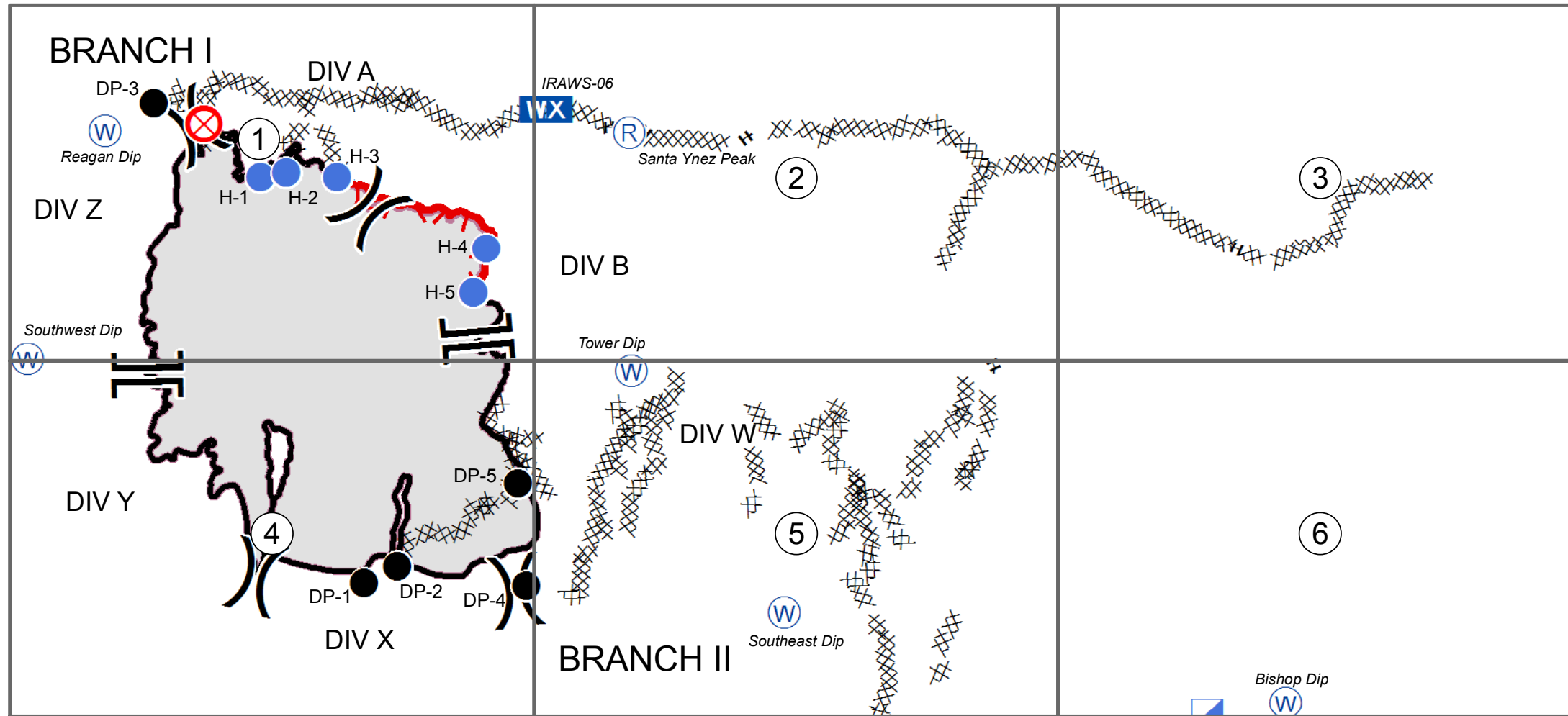


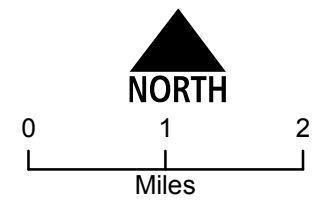


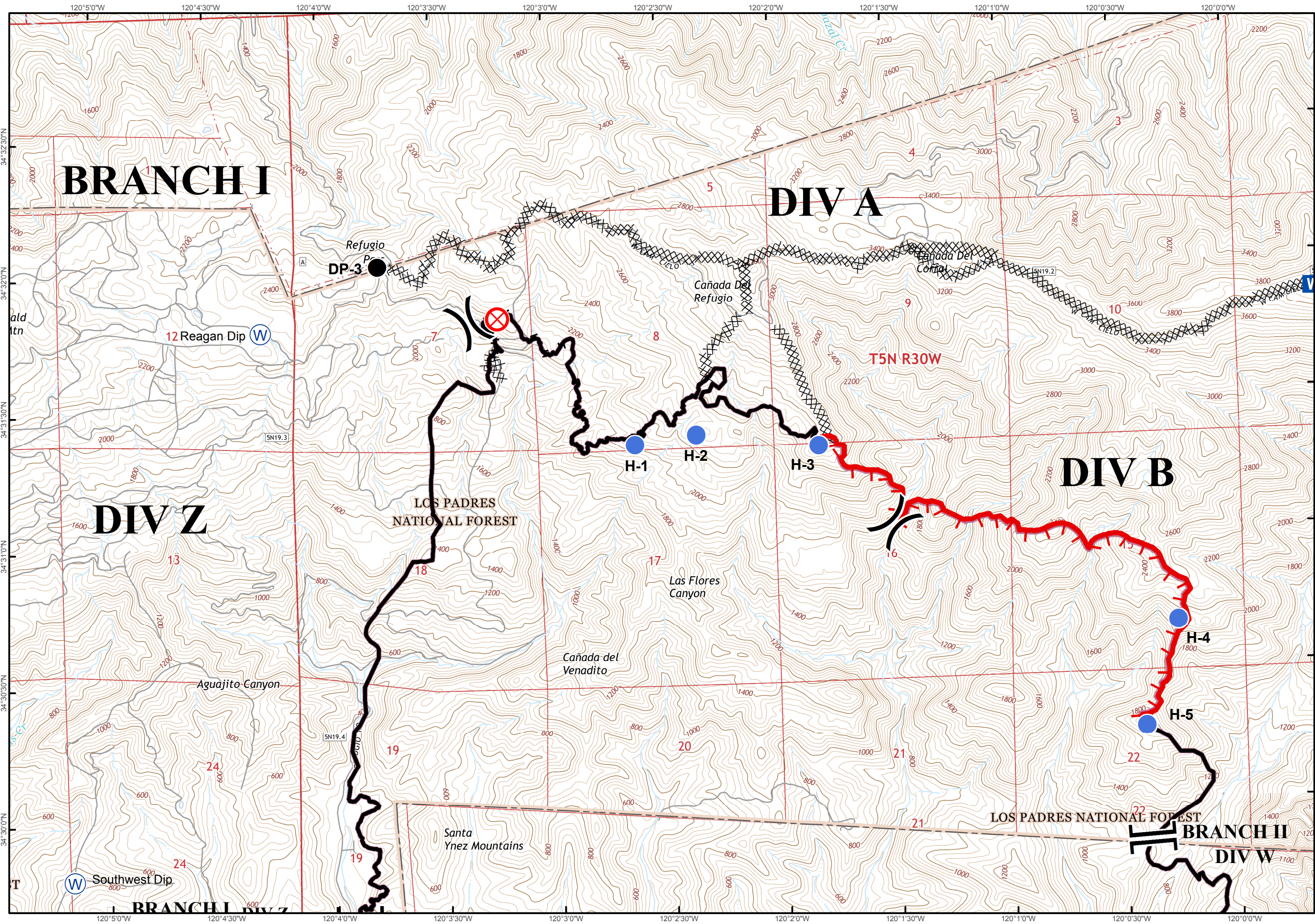
Index Page

-  Drop Point
-  Fire Origin
-  Helispot
-  Incident Command Post
-  Mobile Weather Unit
-  Repeater
-  Water Source
-  Branch
-  Division
-  Uncontrolled Fire Edge
-  Completed Dozer Line
-  Completed Line
-  H - H Hand Line



Storke Tower  



Branch



Division



Drop Point



Fire Origin



Helispot



Mobile Weather Unit



Water Source



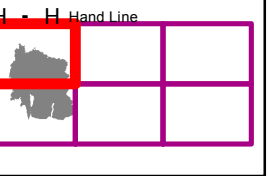
Uncontrolled Fire Edge



Completed Dozer Line



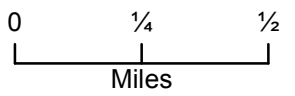
Completed Line



Hand Line



NORTH



Miles



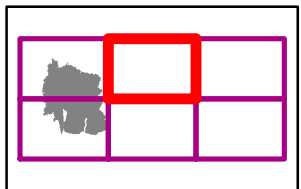
**WX** Mobile Weather Unit

**R** Repeater

**W** Water Source

XXXXX Completed Dozer Line

H - H Hand Line



0 1/4 1/2  
Miles

# BRANCH I

LOS PADRES  
NATIONAL FOREST

**IRAWS-06**  
Santa Ynez

**WX**

Cañada del Capitan  
Santa Ynez Peak **R**

**T5N R30W**

Broadcast Peak **H**

**T5N R29W**

Das Pueblos Canyon

Tecolote Canyon

Tecolote Tunnel

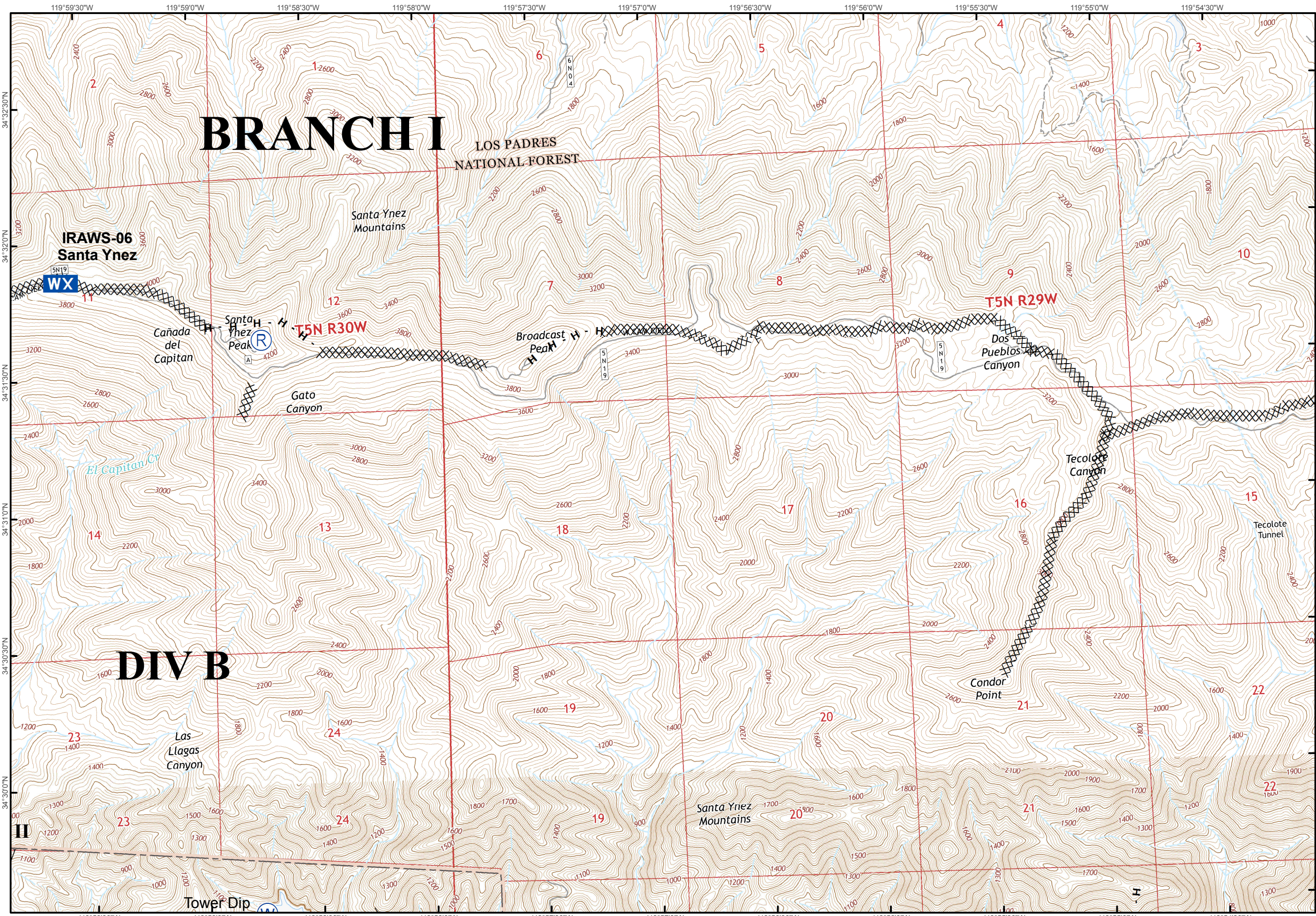
Condor Point

# DIV B

Las Llagas Canyon

Santa Ynez Mountains

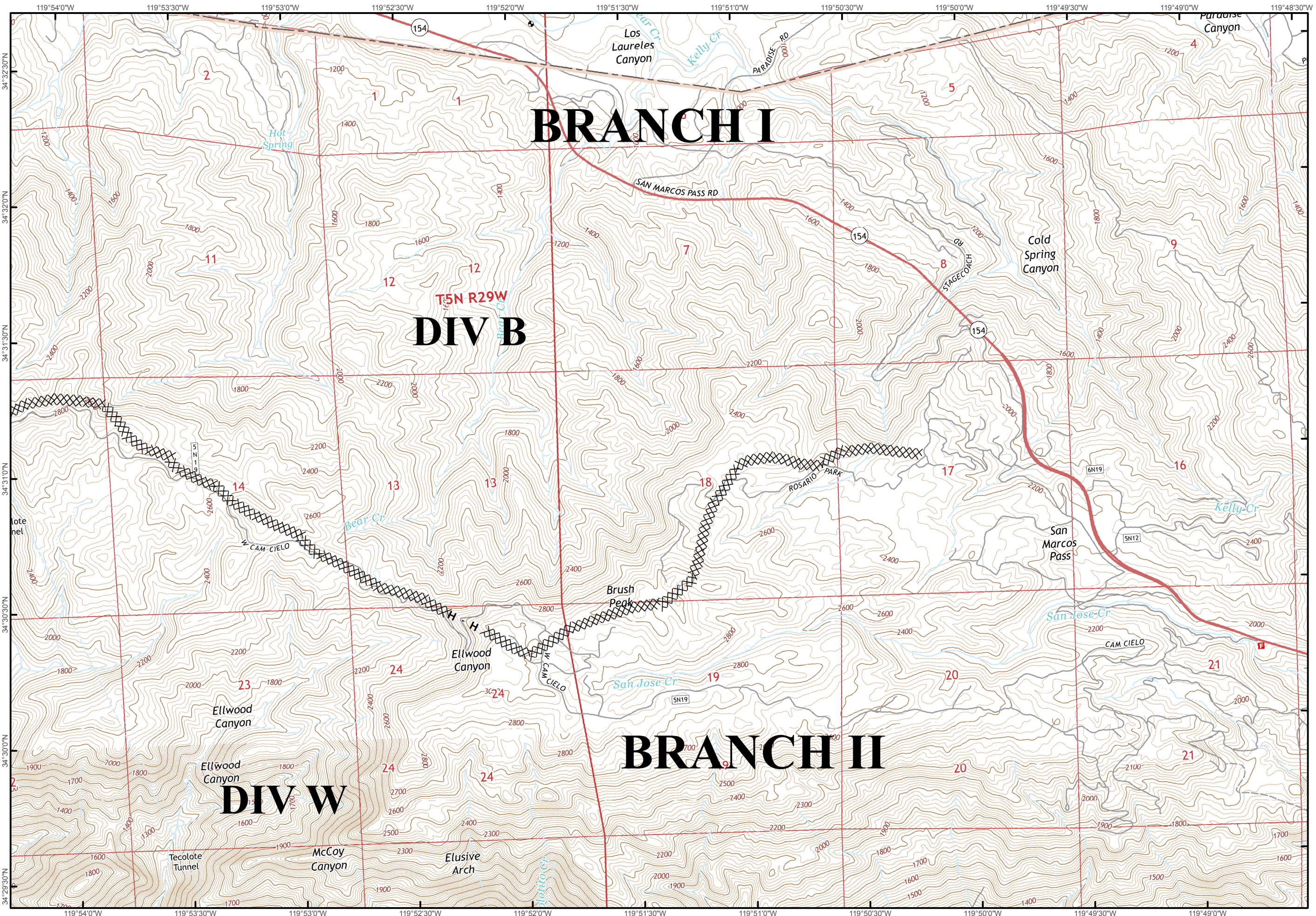
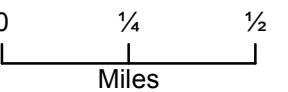
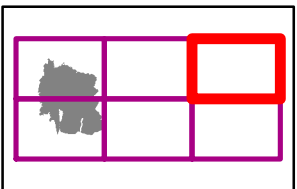
Tower Dip





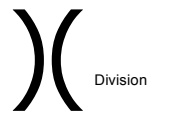
XXXXX Completed Dozer Line

H - H Hand Line

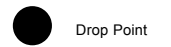




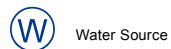
Branch



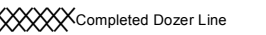
Division



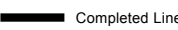
Drop Point



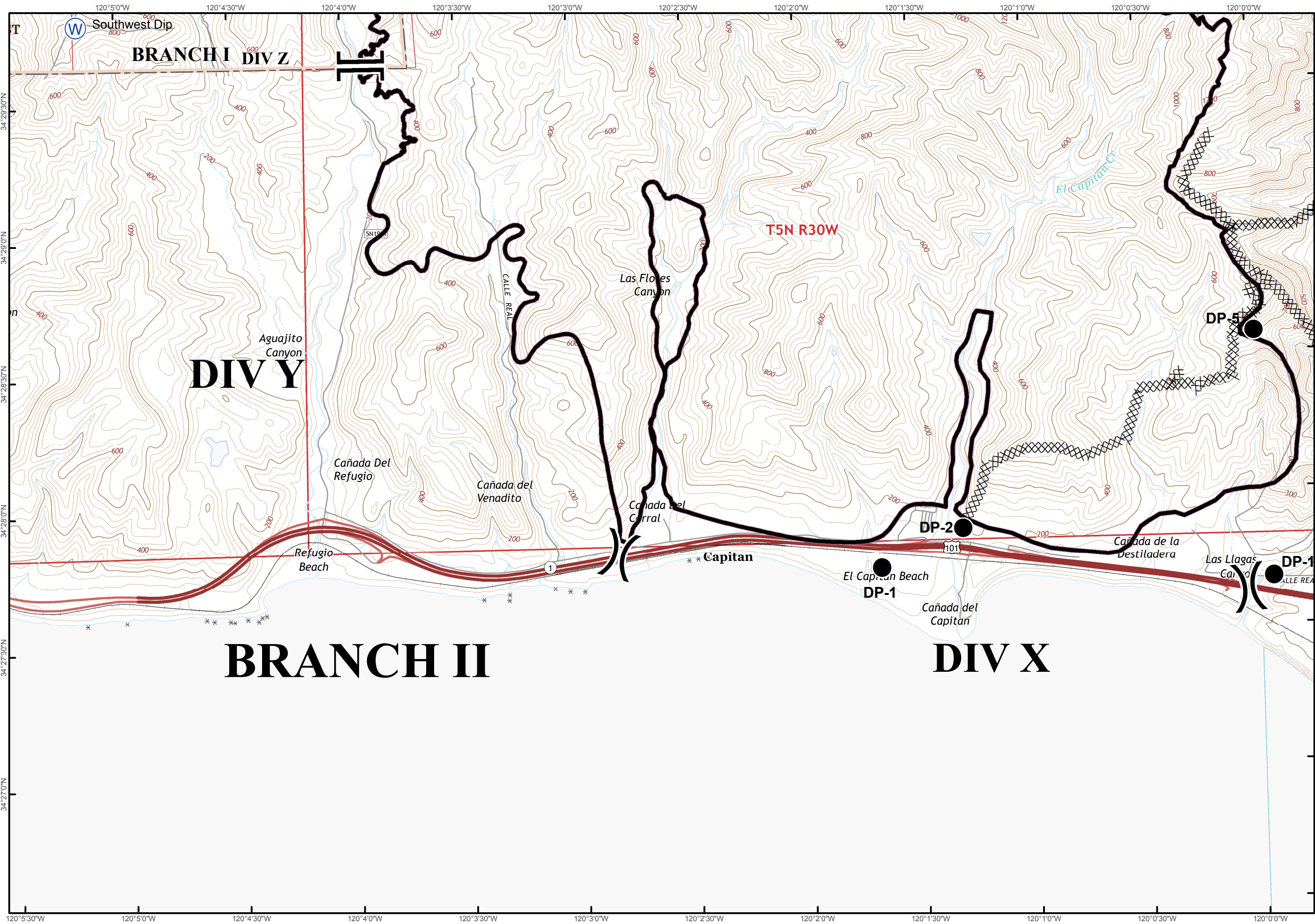
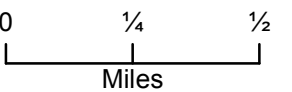
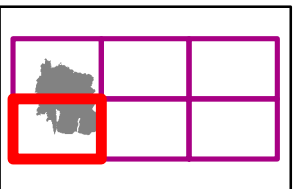
Water Source



Completed Dozer Line

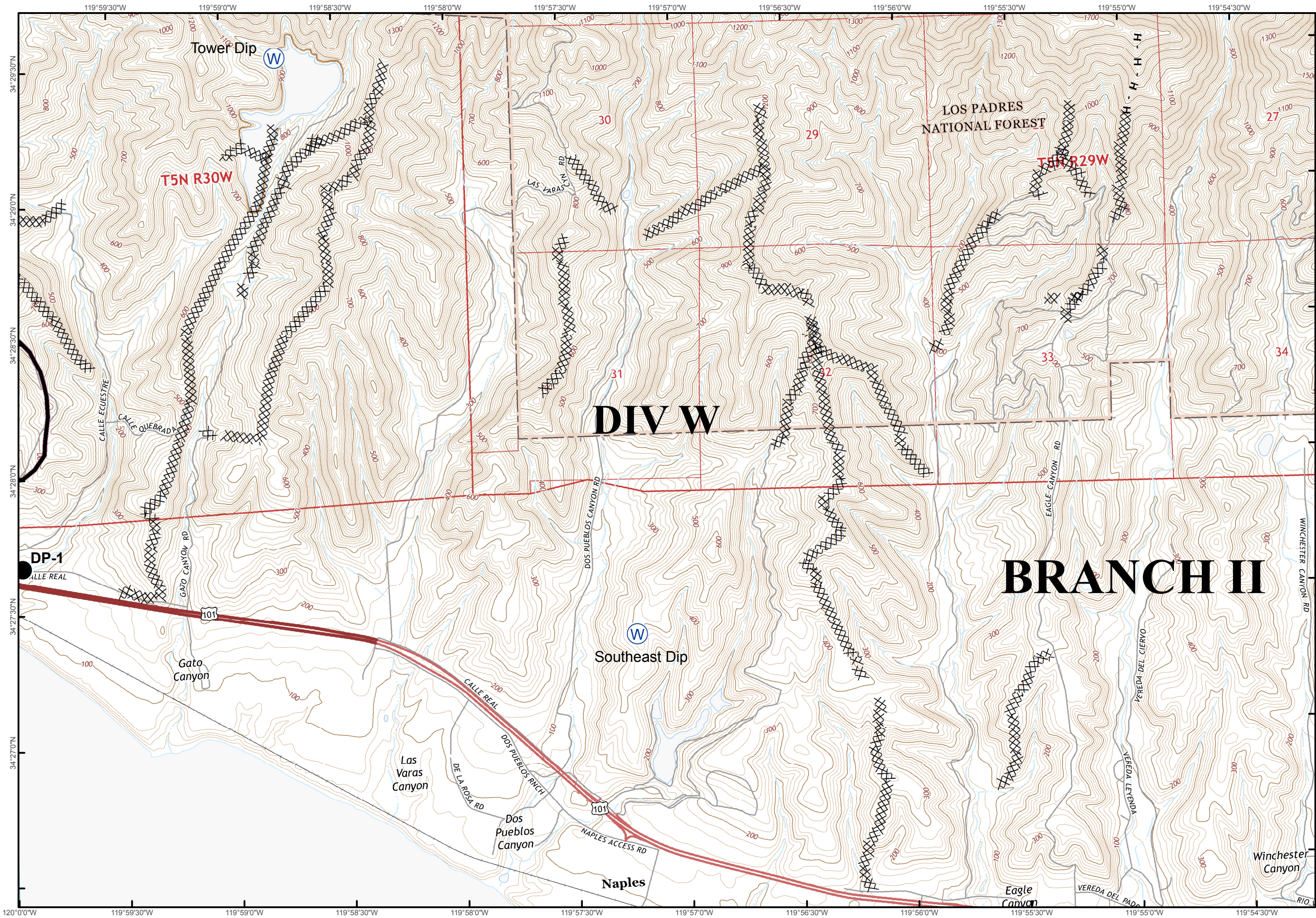
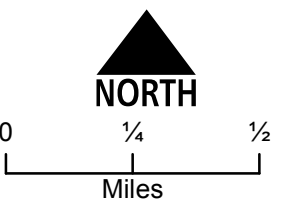
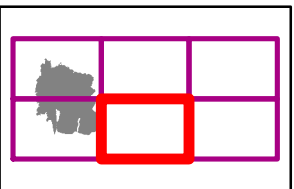


Completed Line





- Drop Point
- Ⓜ Water Source
- XXXXX Completed Dozer Line
- Completed Line
- H - H Hand Line



Tower Dip

T5N R30W

LOS PADRES NATIONAL FOREST

T5R29W

DIV W

BRANCH II

DP-1

Southeast Dip

Gato Canyon

Las Varas Canyon



Dos Pueblos Canyon

Naples

Eagle Canyon

Winchester Canyon



-  Incident Command Post
-  Water Source

