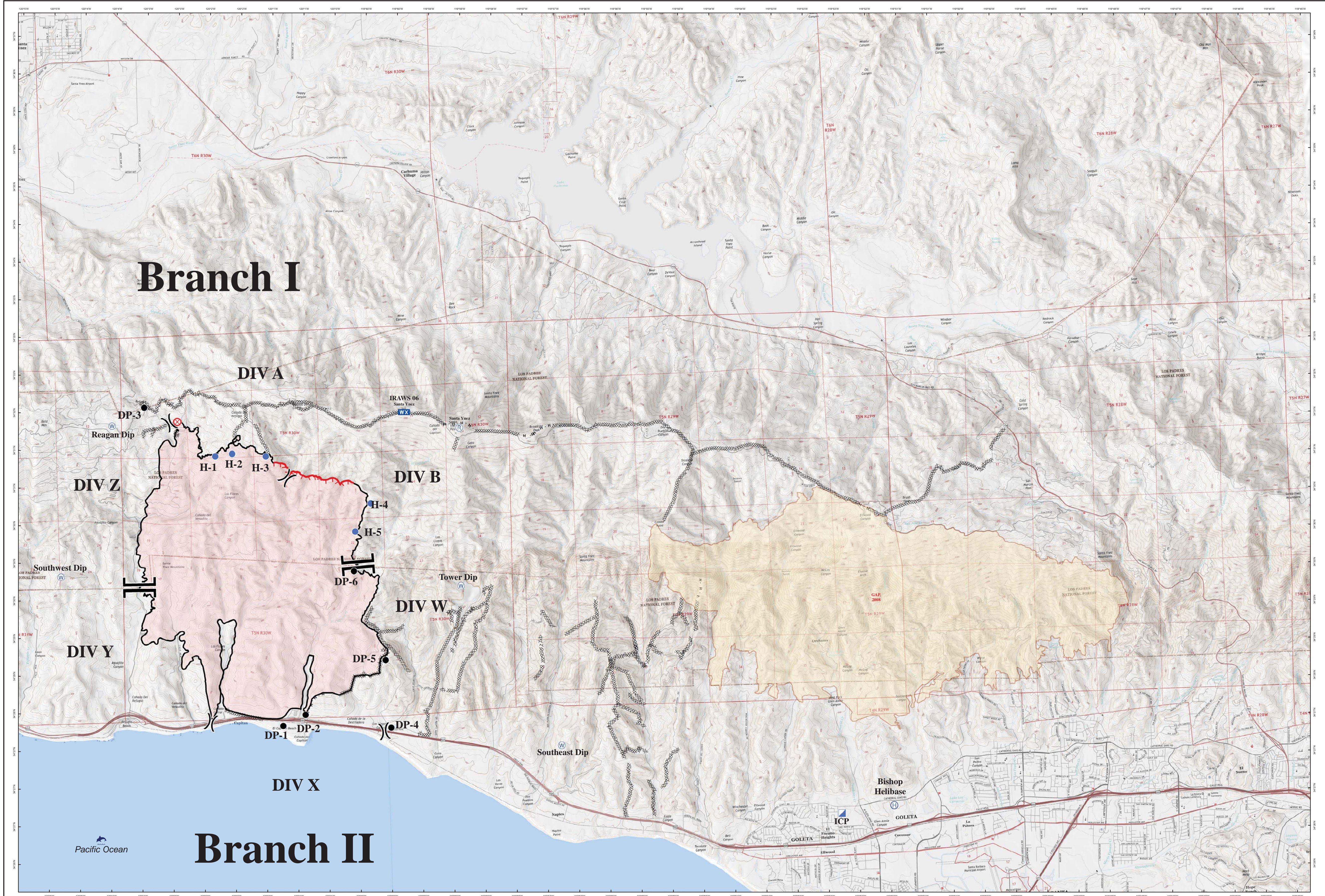


Branch I

Branch II



Operations
Sherpa Fire
 CA-LPF-001643
 06/23/2016 0600

DATUM: NAD 83 Zone10



- Uncontrolled Fire Edge
- Completed Dozer Line
- Completed Line
- Planned Line
- Proposed Dozer Line
- Hand Line
- Drop Point
- Helispot
- Fire Origin
- Incident Command Post
- Mobile Weather Unit
- Repeater
- Water Source / Dip Sites

Division
 Branch

Sherpa Mobile Map
 (Download in Avenza)

VETS IR Maps
 (Scan with QR Reader)