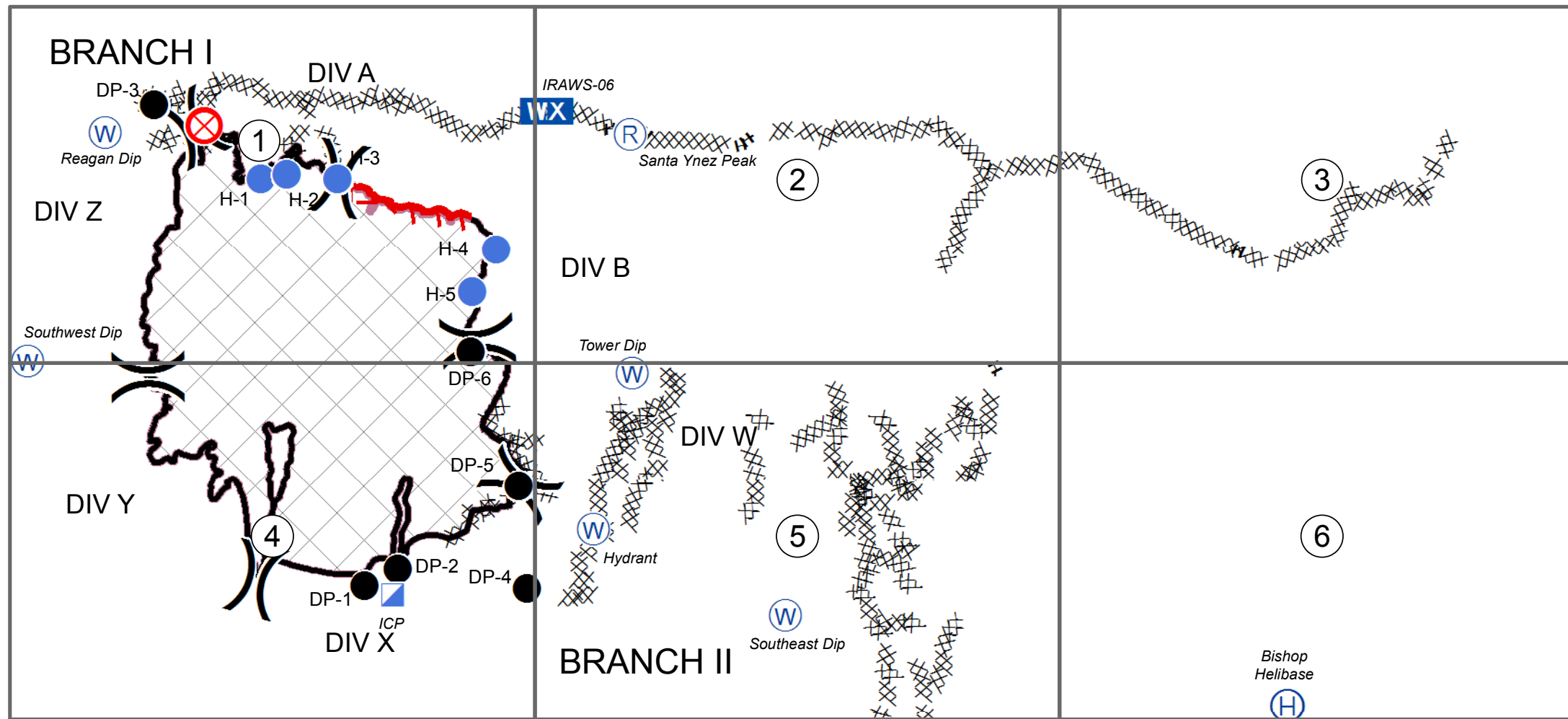


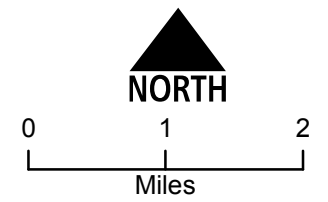
Sherpa Fire
 CA-LPF-001643
 3-Day Operational Period
 June 24, 25, 26, 2016

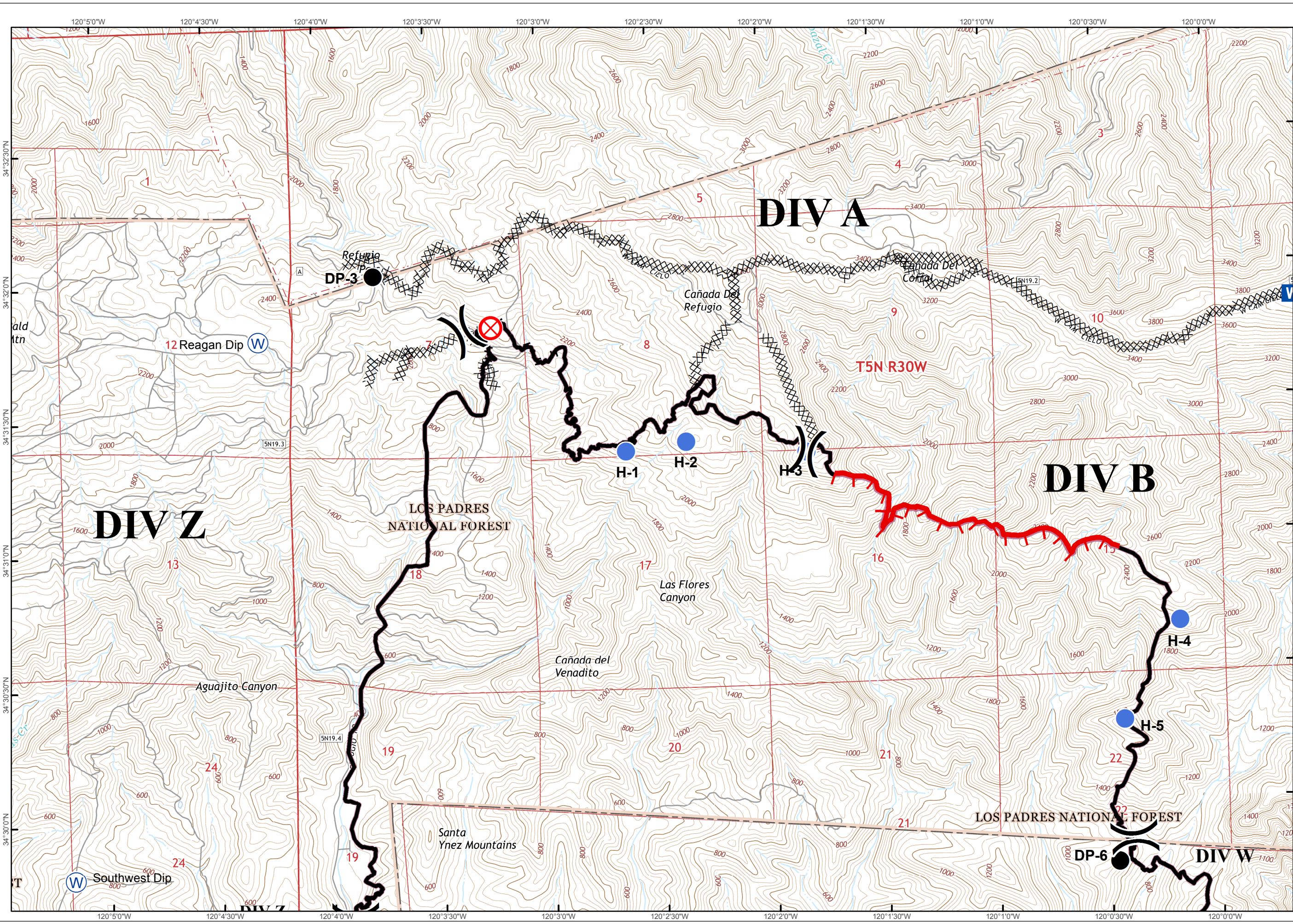
Index Page



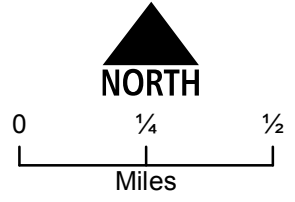
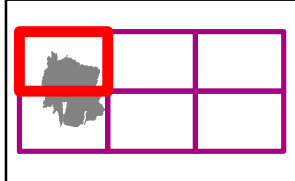
- Drop Point
- Fire Origin
- Helibase
- Helispot
- Incident Command Post
- Mobile Weather Unit
- Repeater
- Water Source
- Division
- Uncontrolled Fire Edge
- Completed Dozer Line
- Completed Line
- H - H Hand Line

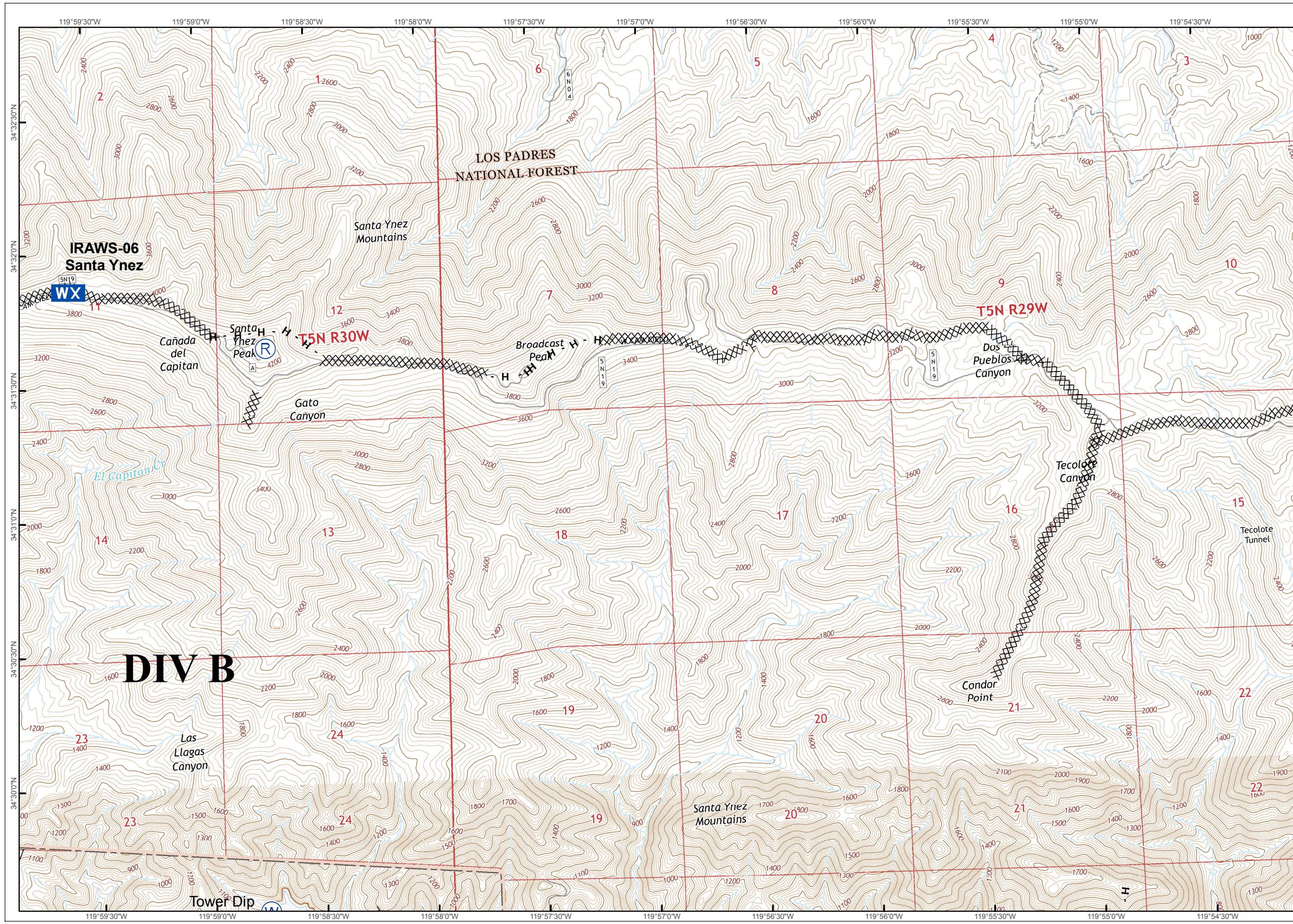
Storke Tower



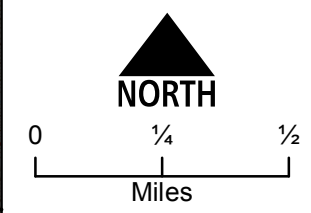
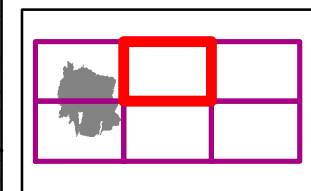


- Division
- Drop Point
- Fire Origin
- Helispot
- Mobile Weather Unit
- Water Source
- Uncontrolled Fire Edge
- Completed Dozer Line
- Completed Line
- H - H Hand Line



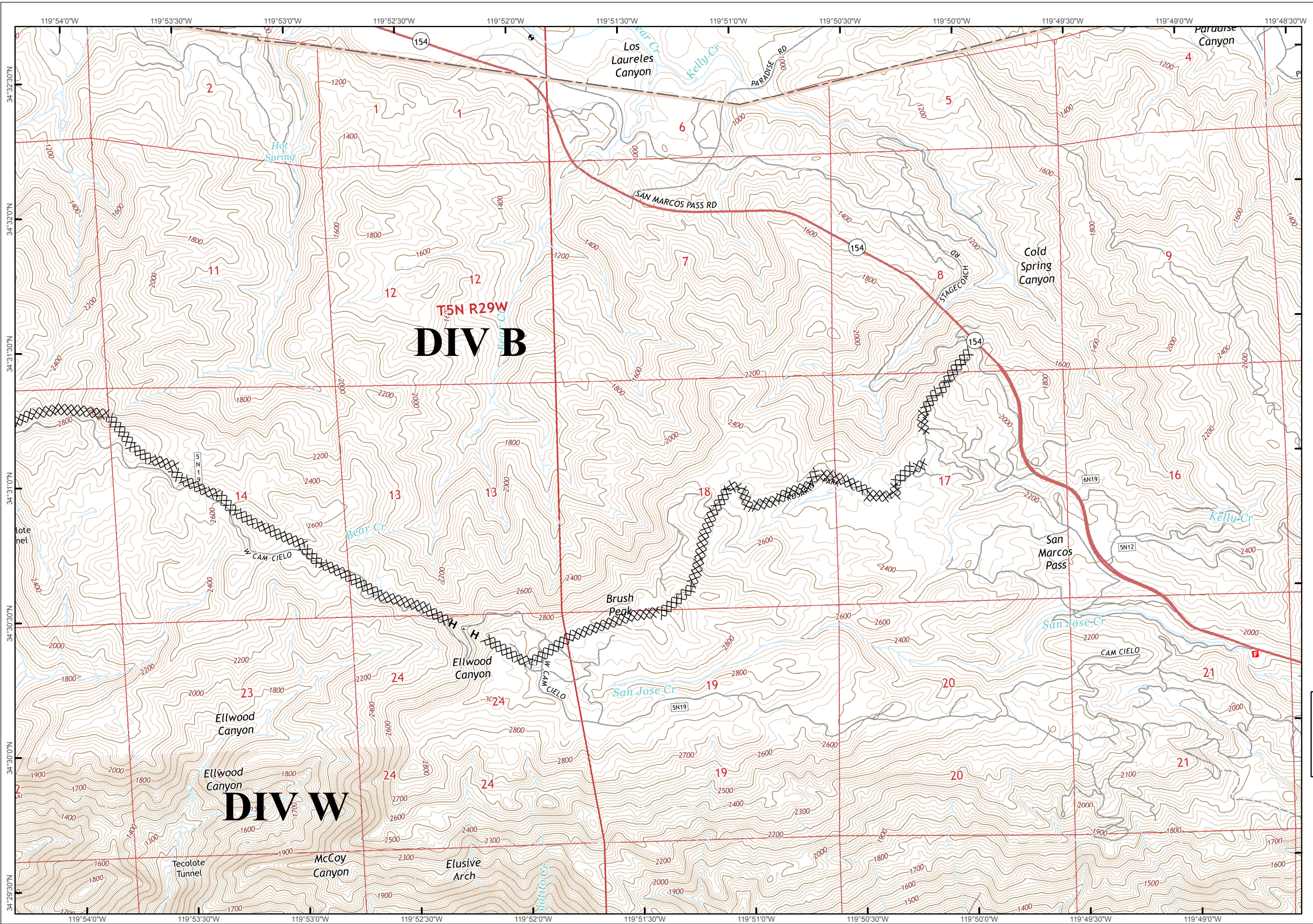
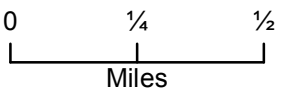
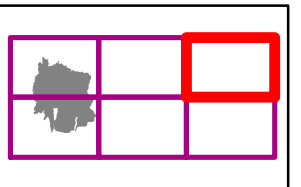


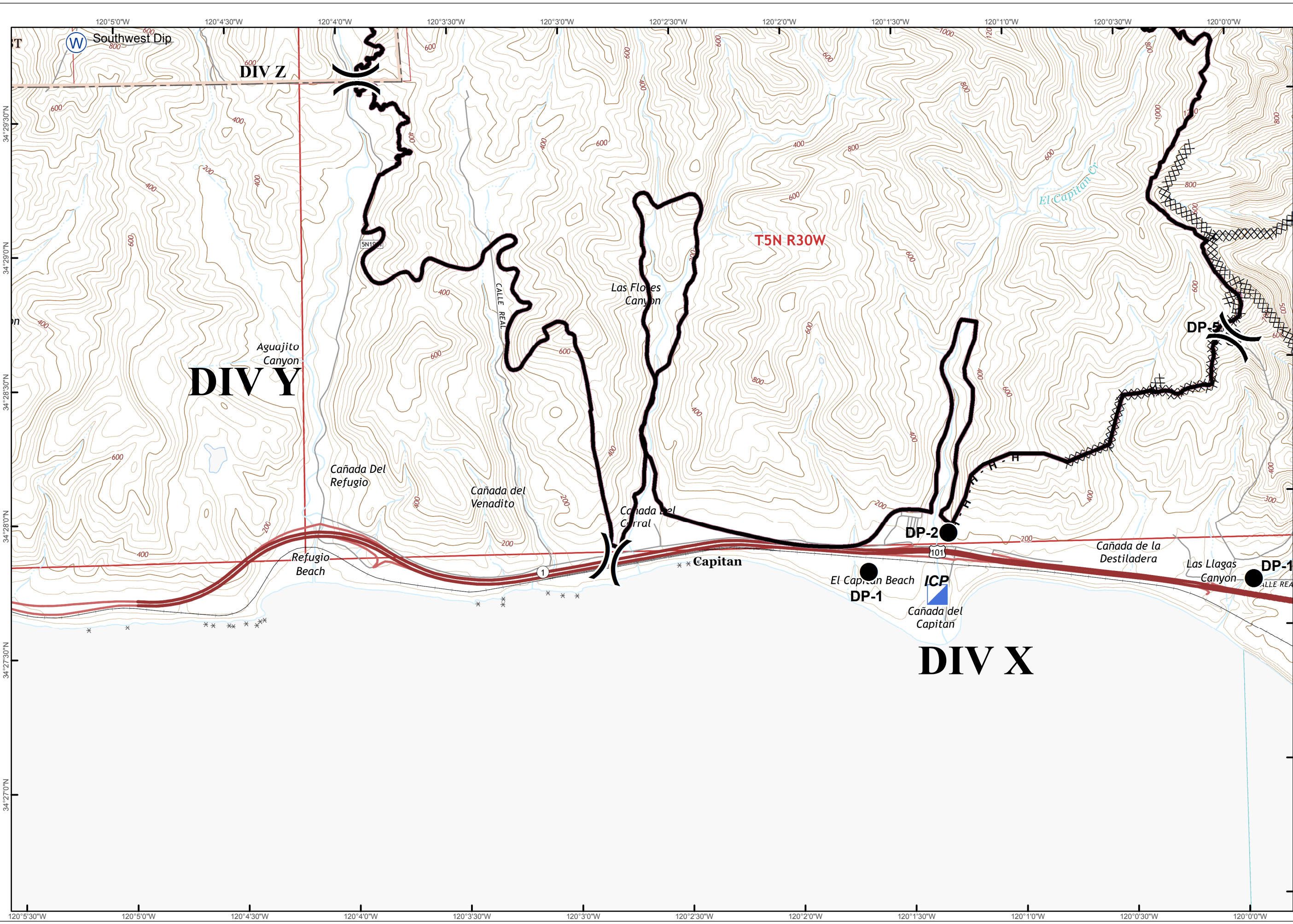
- Mobile Weather Unit
- Repeater
- Water Source
- Completed Dozer Line
- Hand Line



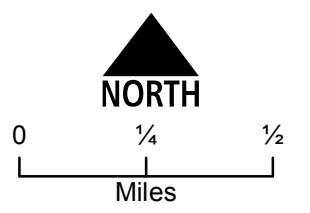
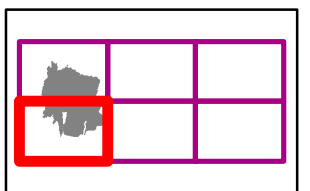
XXXXX Completed Dozer Line

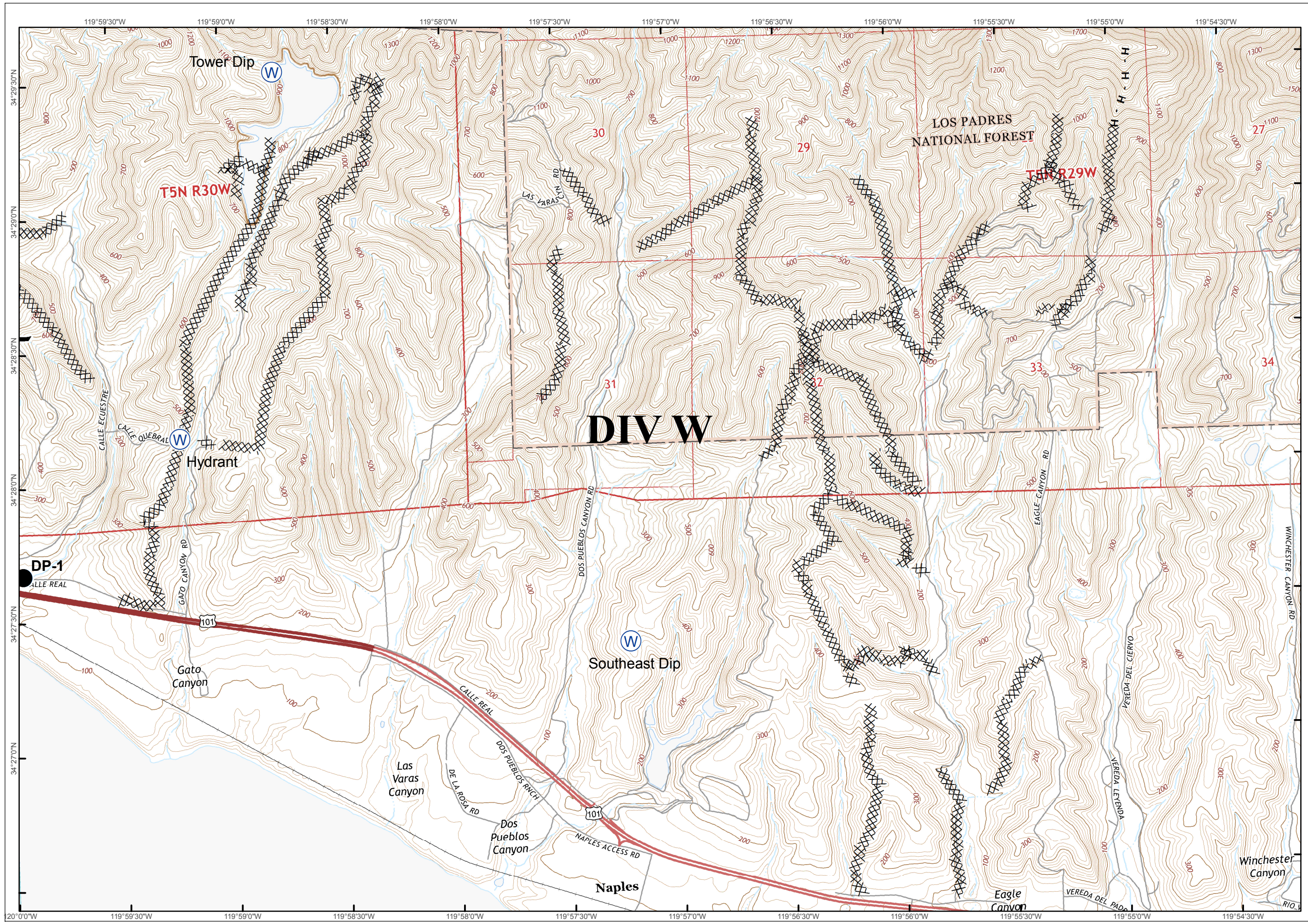
H - H Hand Line





- Division
- Drop Point
- Incident Command Post
- Water Source
- Completed Dozer Line
- Completed Line
- Hand Line





- Division
- Drop Point
- Water Source
- Completed Dozer Line
- H - H Hand Line

