

120°4'W

120°3'W

120°2'W

120°1'W

34°32'N

34°31'N

34°30'N

34°29'N

34°28'N

34°27'N

34°32'N

34°31'N

34°30'N

34°29'N

34°28'N

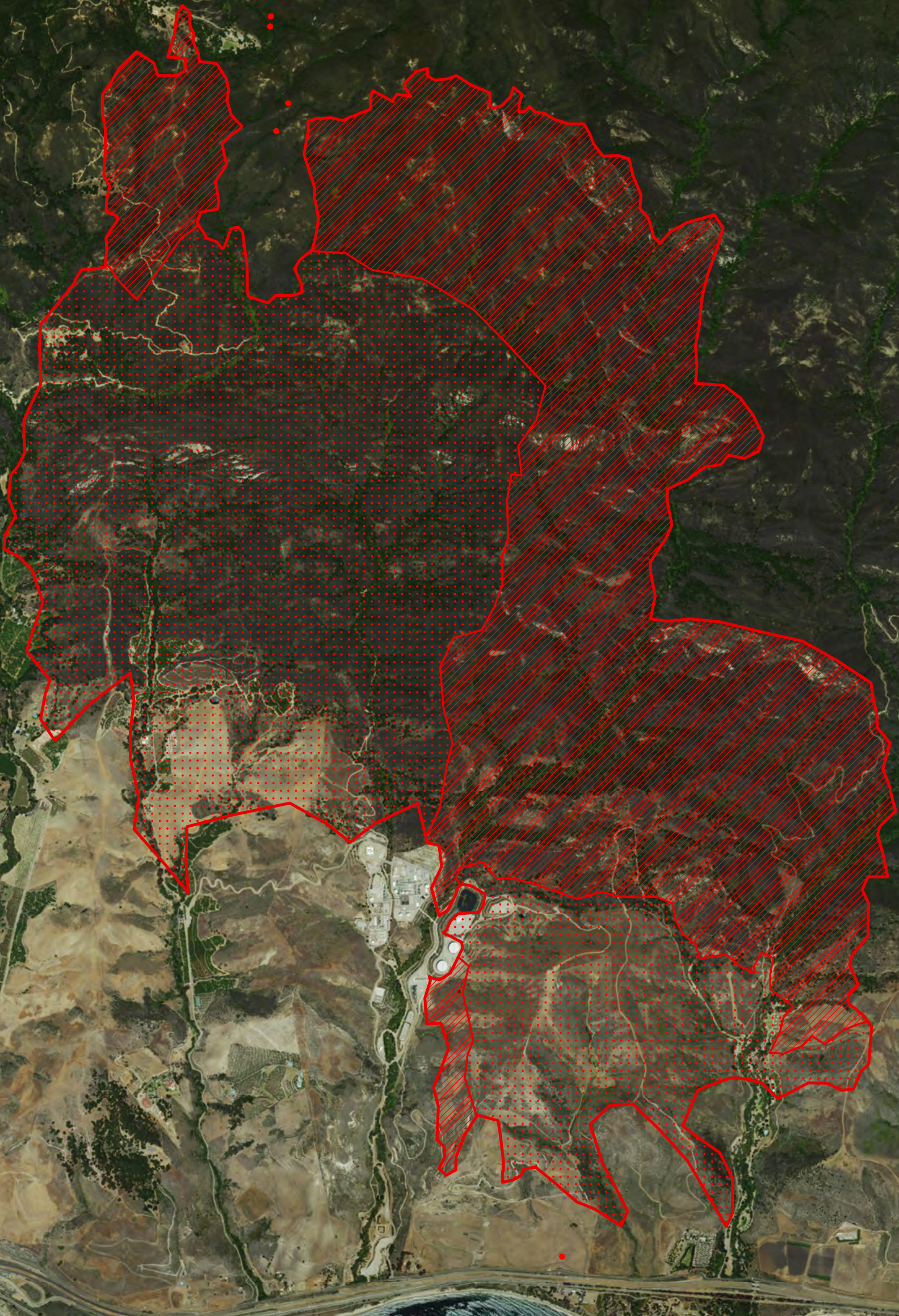
34°27'N







1:24,000



Sherpa Fire
 Heat Acres: 4,640
 CA-LPF-001643
 Infrared Interpretation
 Imagery Date:
 06/16/2016 2352 Hrs



-  Heat Perimeter
 -  Intense Heat Areas
 -  Scattered Heat Areas
 -  Isolated Heat Sources
- NAD 1983 UTM Zone 10N

IRIN: K Felker
 Map produced:
 6/17/2016 0125 hrs

0 1,250 2,500 5,000

Getmapping, Aerogrid, IGN, IGP, swisstopo, and the GIS User Community