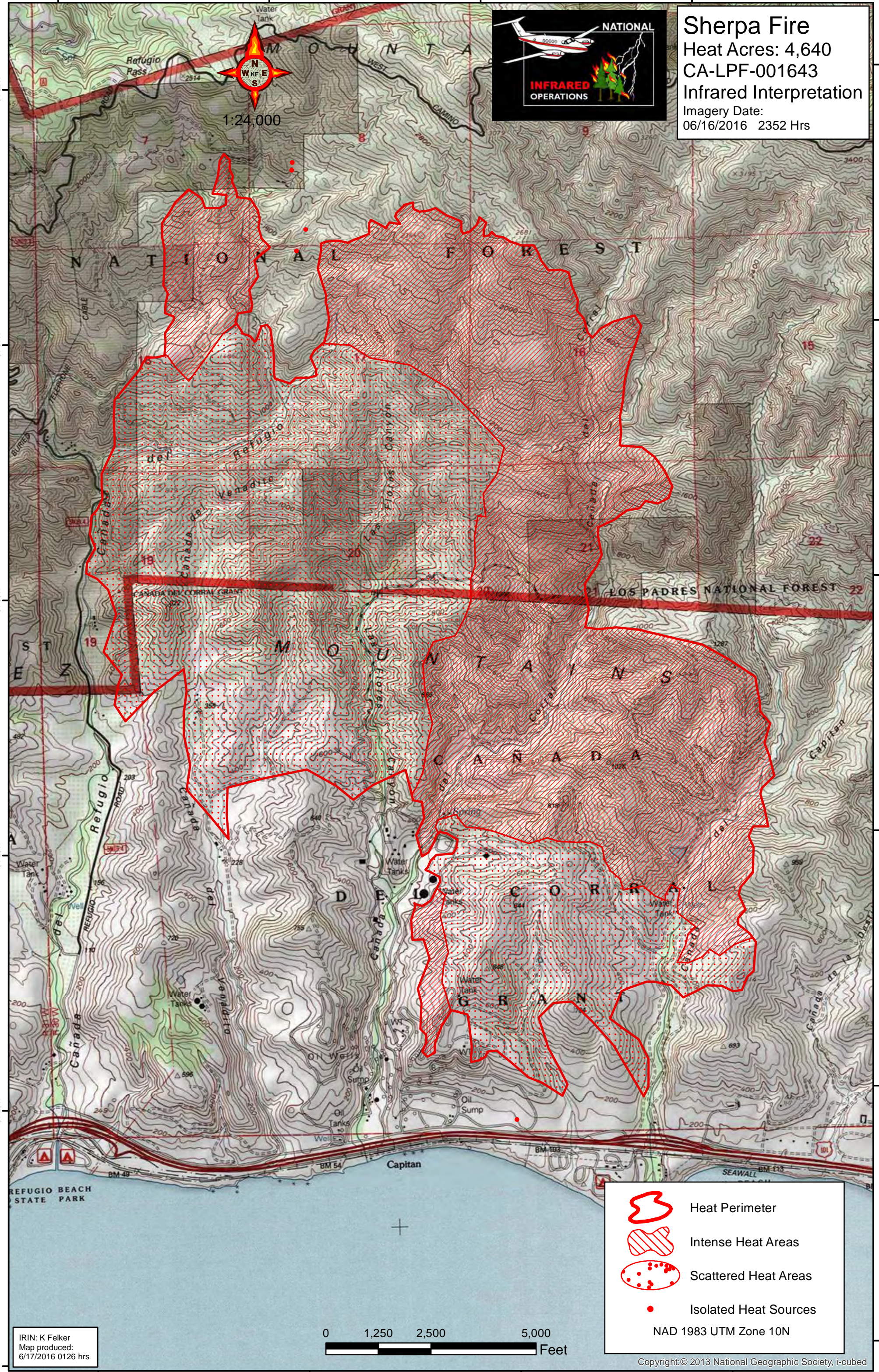






120°4'W 120°3'W 120°2'W 120°1'W

34°32'N 34°31'N 34°30'N 34°29'N 34°28'N 34°27'N



Sherpa Fire
 Heat Acres: 4,640
 CA-LPF-001643
 Infrared Interpretation
 Imagery Date:
 06/16/2016 2352 Hrs



-  Heat Perimeter
-  Intense Heat Areas
-  Scattered Heat Areas
-  Isolated Heat Sources

NAD 1983 UTM Zone 10N

IRIN: K Felker
 Map produced:
 6/17/2016 0126 hrs

0 1,250 2,500 5,000 Feet

Copyright © 2013 National Geographic Society, i-cubed

120°4'W 120°3'W 120°2'W 120°1'W