

120°4'W

120°3'W

120°2'W

120°1'W

120°0'W

34°33'N  
34°32'N  
34°31'N  
34°30'N  
34°29'N  
34°28'N  
34°27'N

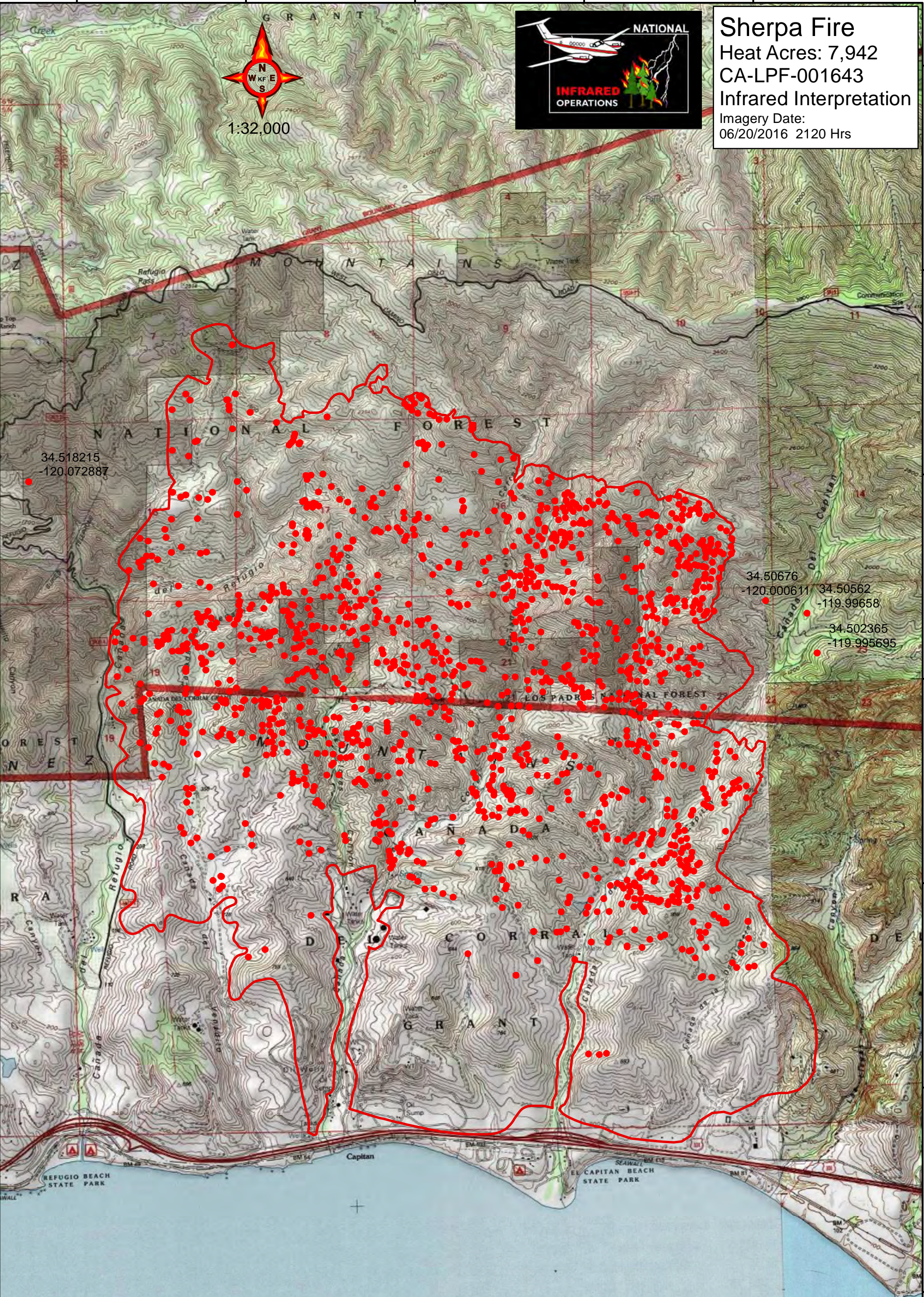
34°33'N  
34°32'N  
34°31'N  
34°30'N  
34°29'N  
34°28'N  
34°27'N



1:32,000



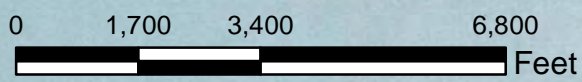
**Sherpa Fire**  
Heat Acres: 7,942  
CA-LPF-001643  
Infrared Interpretation  
Imagery Date:  
06/20/2016 2120 Hrs






34.518215  
-120.072887

34.50676  
-120.000611  
34.50562  
-119.99658  
34.502365  
-119.995695

IRIN: K Felker  
Map produced:  
6/21/2016 0054 hrs



-  Heat Perimeter
-  Intense Heat Areas
-  Isolated Heat Sources

NAD 1983 UTM Zone 10N

Copyright © 2013 National Geographic Society, i-cubed

120°4'W

120°3'W

120°2'W

120°1'W

120°0'W