

Rey

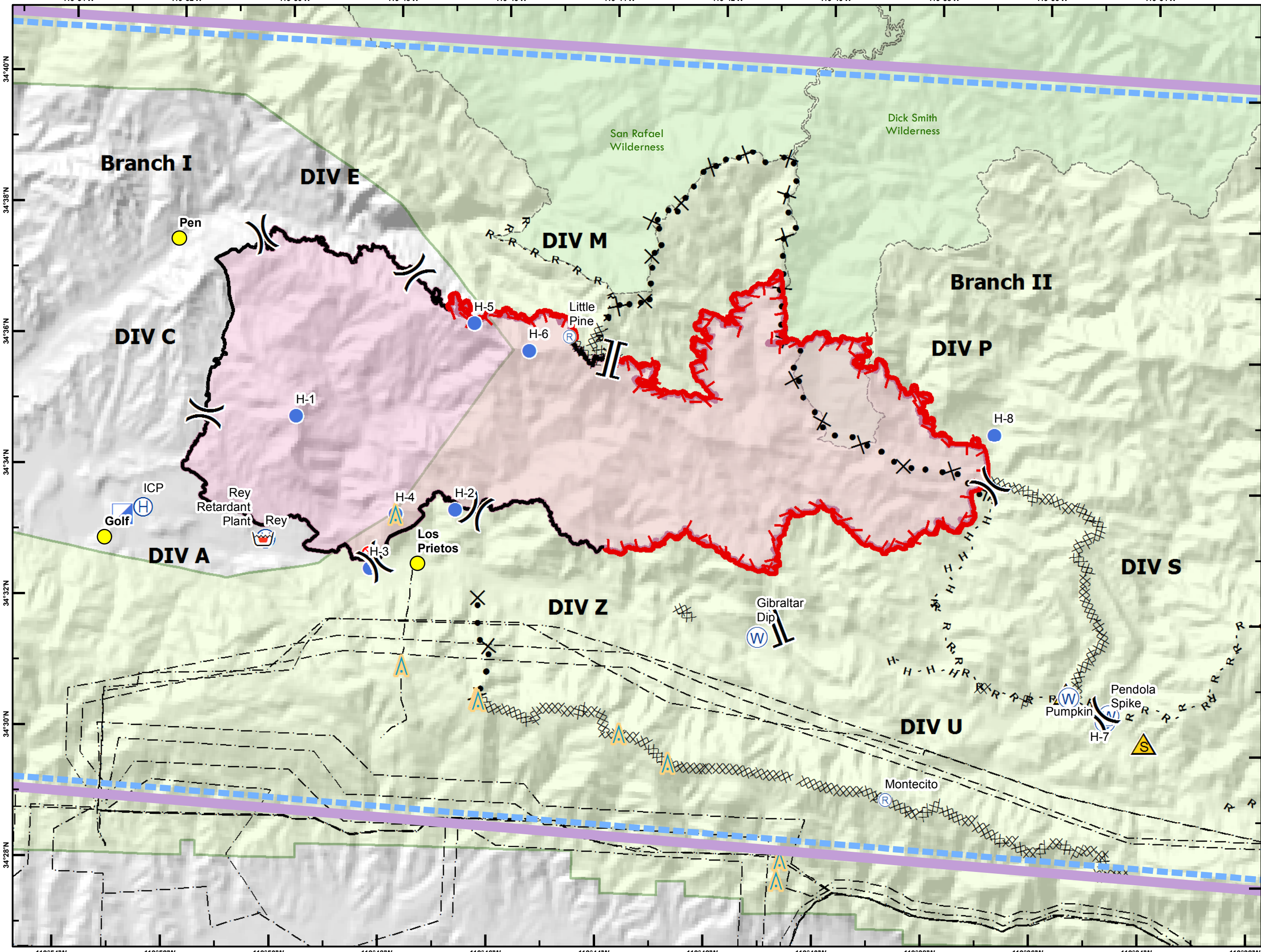
CA-LPF-002809

Air Operations Map

8/25/2016
Day Shift 0600 hrs

Legend

- TFR
- Check Point
- Division
- Branch
- Fire Origin
- Helibase
- Helispot
- Incident Command Post
- Repeater
- Safety Zone
- Water Source
- Uncontrolled Fire Edge
- Completed Dozer Line
- Completed Line
- H - H Hand Line
- Planned Secondary Line
- Proposed Dozer Line
- Fire Perimeter
- Wilderness Boundary
- Los Padres National Forest
- HazardType**
- Tower
- Powerline



0 1 2 Miles
Approx. perimeter as of 8/24/2016 @ 1445 PDT

REY PILOT LOCATION INFORMATION

Name	Type	Latitude	Longitude	Elevation	IGE / OGE	Remarks
Cachuma Dip		N34*33.381'	W119*56.697'	860'		Use caution, boats on lake / submerged pipeline
Gibraltar Dip		N34*31.647'	W119*41.142'	1400'		
Name	Type	Latitude	Longitude	Elevation	IGE / OGE	Remarks
Santa Ynez Helibase		N34*36.406'	W120*04.514'	710'	HIGE	Santa Ynez Airport is OPEN - Outside TFR unicom 122.8
Rey MRB, Cargo, Personnel		N34*32.944'	W119*50.263'	880'	HIGE	San Fernando Rey Ranch
ICP Helispot	2	N34*33.655'	W119*52.874'	775'	HOGE	Adjacent to Live Oak ICP
H-1	2	N34*34.864'	W119*49.767'	2765'	HOGE	In black, dust abatement REQUIRED
H-2	2	N34*33.461'	W119*46.786'	1745'	HOGE	In black, dust abatement REQUIRED
H-3	1	N34*32.542'	W119*48.323'	940'	HIGE	Across from White Rock Day use CAUTION: Powerlines parallel to Paradise Rd.
H-4	2	N34*33.381'	W119*47.875'	2410'	HOGE	In black, dust abatement REQUIRED CAUTION: T-posts near pad marked by flagging
H-5	2	N34*36.324'	W119*46.516'	3955'	HOGE	In black, dust abatement REQUIRED
H-6	2	N34*35.930'	W119*45.490'	3990'	HOGE	In black, dust abatement REQUIRED 1/2 mile West of Little Pine Repeater Site
H-7	2	N34*30.513'	W119*34.594'	1615'	HOGE	Pendola ranch, fence parallel with roadway
H-8	1	N34*34.826'	W119*36.862'	1810'	HIGE	Ogilvey ranch airstrip

REY PILOT ROUTE LOCATION INFORMATION

Name	Type	Latitude	Longitude	Elevation	Remarks
Golf Check	RW	N34*32.897'	W119*53.231'		RW traffic enroute to fire from Santa Ynez Helibase
Cachuma Check	RW	N34*35.153'	W119*58.804'		RW traffic enroute to fire from Santa Ynez Helibase
Los Prietos Check	RW	N34*32.623'	W119*47.444'		RW traffic accessing east flank of fire from Santa Ynez Helibase
Pen Check	RW	N34*37.486'	W119*52.009'		RW traffic accessing west flank of fire from Cachuma Dip