

Rey Fire

CA-LPF-002809

Air Operations Map

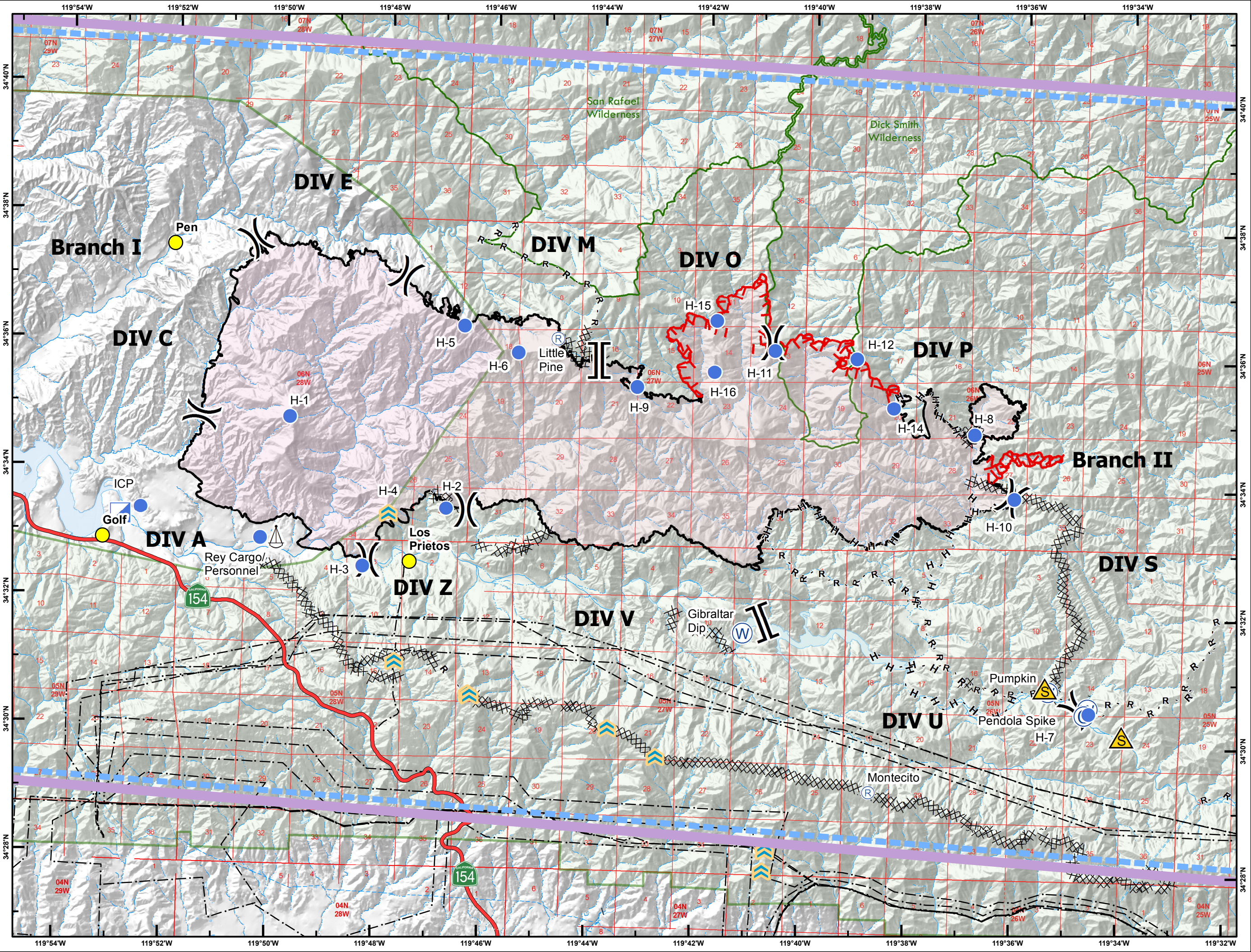
8/30/2016

- Rey Fire
- Check Point
- TFR
- Tower
- Powerline
- Branch Break
- Division Break
- Uncontrolled Fire Edge
- Contained Fire Edge
- Completed Dozer Line
- R - R Road as Completed Line
- H - H Hand Line
- Incident Command Post
- Helibase
- Helispot
- Water Source
- Repeater
- Safety Zone
- Los Padres National Forest
- Wilderness Boundary



NAD83 UTM Zone 11

0 1 2 Miles



Approx. perimeter as of 8/29/2016 @ 2052 PDT

REY PILOT LOCATION INFORMATION

Name	Type	Latitude	Longitude	Elevation	IGE / OGE	Remarks
Cachuma Dip		N34*33.381'	W119*56.697'	770'		Use caution, boats on lake / submerged pipeline
Gibraltar Dip		N34*31.647'	W119*41.142'	1400'		
Santa Cruz Dip		N34*34.371'	W119*55.621'	770'		Santa Cruz Bay of Cachuma Lake
Name	Type	Latitude	Longitude	Elevation	IGE / OGE	Remarks
Santa Ynez Helibase		N34*36.406'	W120*04.514'	710'	HIGE	Santa Ynez Airport is OPEN - Outside TFR Tower 125.325
Rey MRB, Cargo, Personnel		N34*32.944'	W119*50.263'	880'	HIGE	San Fernando Rey Ranch
ICP Helispot	2	N34*33.655'	W119*52.874'	775'	HOGE	Adjacent to Live Oak ICP
H-1	2	N34*34.864'	W119*49.767'	2765'	HOGE	In black, dust abatement REQUIRED
H-2	2	N34*33.461'	W119*46.786'	1745'	HOGE	In black, dust abatement REQUIRED
H-3	1	N34*32.542'	W119*48.323'	940'	HIGE	Across from White Rock Day use CAUTION: Powerlines parallel to Paradise Rd.
H-4	2	N34*33.381'	W119*47.875'	2410'	HOGE	In black, dust abatement REQUIRED CAUTION: T-posts near pad marked by flagging
H-5	2	N34*36.324'	W119*46.516'	3955'	HOGE	In black, dust abatement REQUIRED
H-6	2	N34*35.930'	W119*45.490'	3990'	HOGE	In black, dust abatement REQUIRED 1/2 mile West of Little Pine Repeater Site
H-7	2	N34*30.513'	W119*34.594'	1615'	HOGE	Pendola ranch, fence parallel with roadway
H-8	1	N34*34.826'	W119*36.862'	1810	HIGE	Ogilvey ranch airstrip
H-9	2	N34*35.439'	W119*43.239'	3750'	HOGE	dust abatement REQUIRED
H-10	2	N34*33.837'	W119*36.084'	2750'	HOGE	dust abatement REQUIRED
H-11	2	N34*36.060'	W119*40.658'	3200'	HOGE	LOTS of dust abatement REQUIRED
H-12	2	N34*35.963'	W119*39.110'	3700'	HOGE	
H-14	2	N34*35.203'	W119*38.398'	2100'	HOGE	In black, dust abatement REQUIRED In canyon bottom
H-15	2	N34*36.502'	W119*41.767'	3200'	HOGE	In black, dust abatement REQUIRED
H-16	2	N34*35.701'	W119*41.792'	2900'	HOGE	In black, dust abatement REQUIRED

REY PILOT ROUTE LOCATION INFORMATION

Name	Type	Latitude	Longitude	Elevation	Remarks
Golf Check	RW	N34*32.897'	W119*53.231'		RW traffic enroute to fire from Santa Ynez Helibase
Cachuma Check	RW	N34*35.153'	W119*58.804'		RW traffic enroute to fire from Santa Ynez Helibase
Los Prietos Check	RW	N34*32.623'	W119*47.444'		RW traffic accessing east flank of fire from Santa Ynez Helibase
Pen Check	RW	N34*37.486'	W119*52.009'		RW traffic accessing west flank of fire from Cachuma Dip