





119°52'W 119°51'W 119°50'W 119°49'W 119°48'W 119°47'W 119°46'W 119°45'W

Rey Fire CA-LPF-002809 Infrared Heat Sources

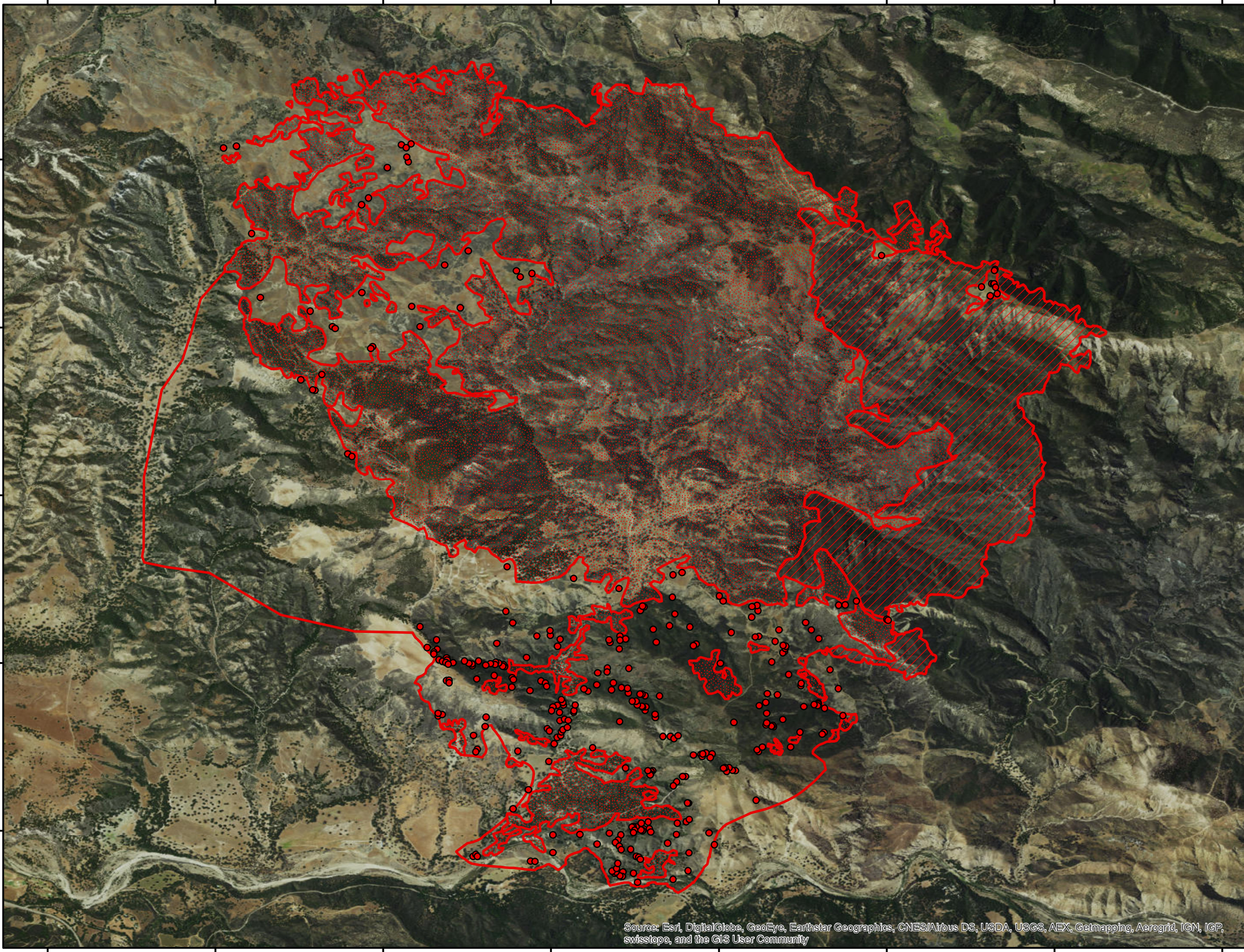
1:40,000

-  Heat Perimeter
-  Intense Heat Areas
-  Scattered Heat Areas
-  Isolated Heat Sources

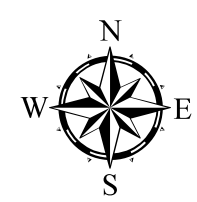
GCS North American 1983

34°37'N
34°36'N
34°35'N
34°34'N
34°33'N

34°37'N
34°36'N
34°35'N
34°34'N
34°33'N



0 0.25 0.5 1 Miles



IR Interpreter: Brian Monroe
 IR interpreted acres: 12,031
 Date: 08/20/2016
 Time received the Image: 2309 hrs

119°52'W 119°51'W 119°50'W 119°49'W 119°48'W 119°47'W 119°46'W 119°45'W

Source: Esri, DigitalGlobe, GeoEye, Earthstar Geographics, CNES/Airbus DS, USDA, USGS, AEX, Getmapping, Aerogrid, IGN, IGP, swisstopo, and the GIS User Community