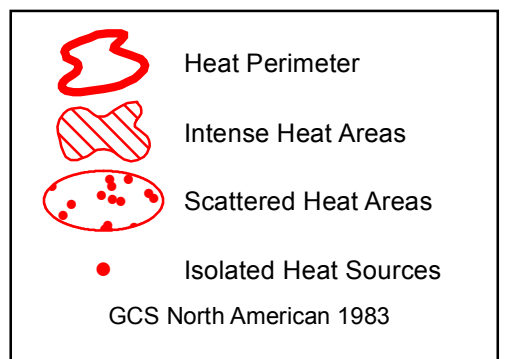






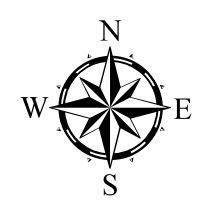
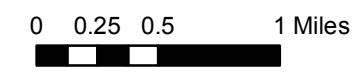
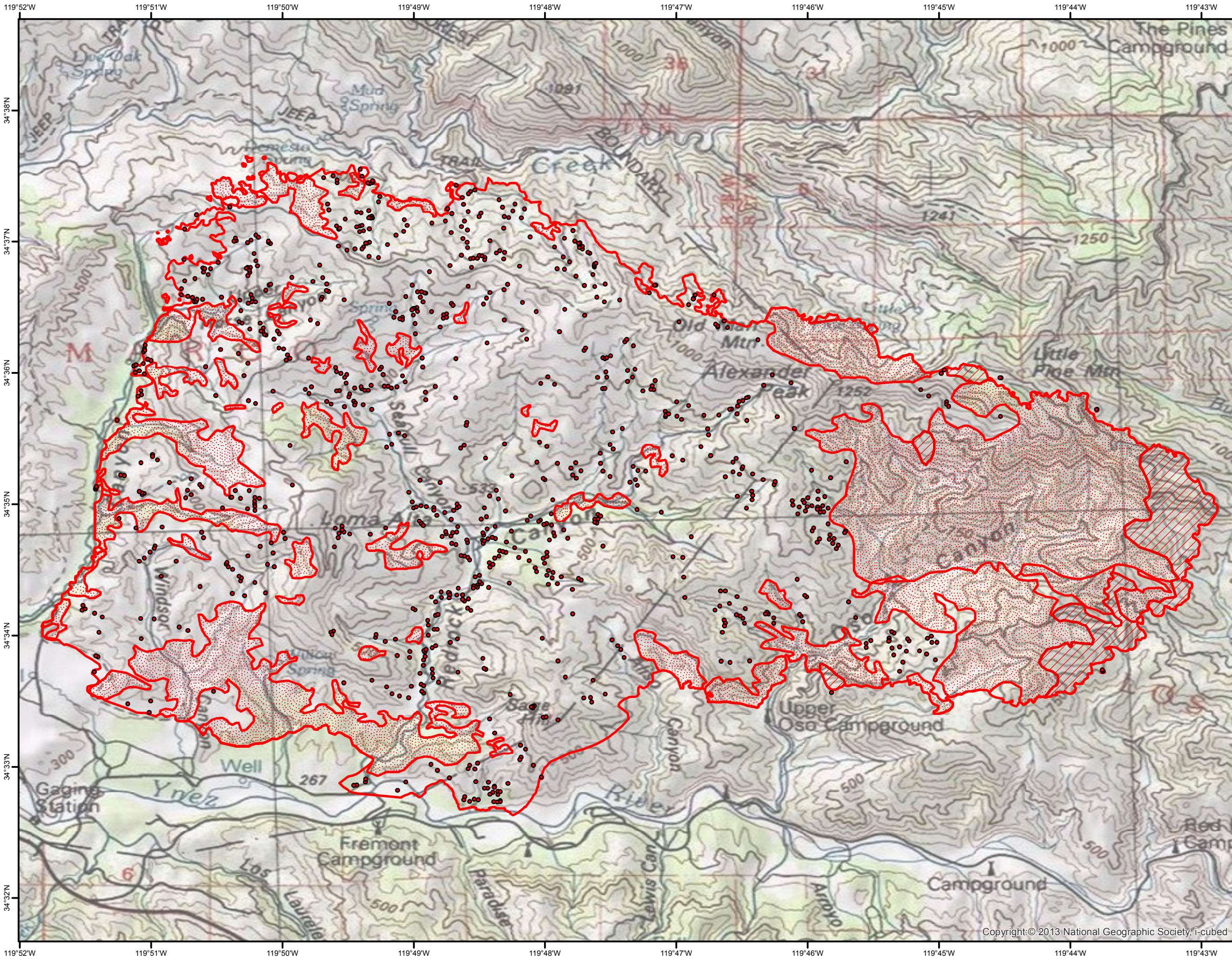
Rey Fire CA-LPF-002809 Infrared Heat Sources

1:50,000



-  Heat Perimeter
-  Intense Heat Areas
-  Scattered Heat Areas
-  Isolated Heat Sources

GCS North American 1983



IR Interpreter: Brian Monroe
IR interpreted acres: 18,839
Date: 08/21/2016
Time received the Image: 0406 hrs

Copyright © 2013 National Geographic Society, i-cubed