





119°52'W 119°51'W 119°50'W 119°49'W 119°48'W 119°47'W 119°46'W 119°45'W 119°44'W 119°43'W 119°42'W 119°41'W 119°40'W 119°39'W 119°38'W

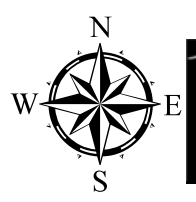
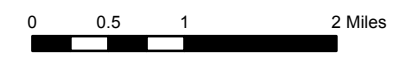
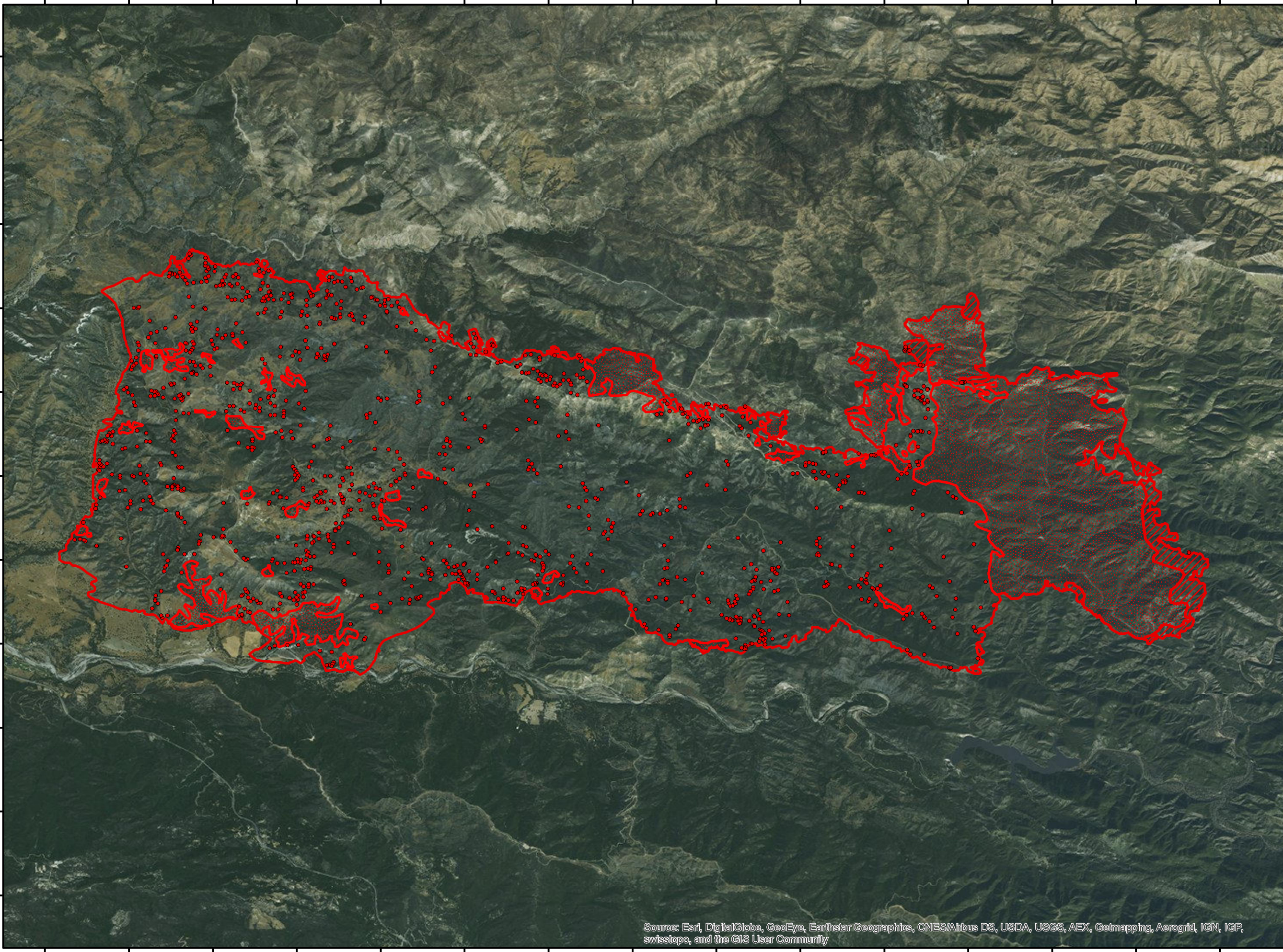
34°40'N
34°39'N
34°38'N
34°37'N
34°36'N
34°35'N
34°34'N
34°33'N
34°32'N
34°31'N
34°30'N

Rey Fire CA-LPF-002809
Infrared Heat Sources

1:80,000

-  Heat Perimeter
-  Intense Heat Areas
-  Scattered Heat Areas
-  Isolated Heat Sources

GCS North American 1983



IR Interpreter: Brian Monroe
 IR interpreted acres: 29,664
 Date:08/23/2016
 Time received the Image: 0131 hrs

Source: Esri, DigitalGlobe, GeoEye, Earthstar Geographics, CNES/Airbus DS, USDA, USGS, AEX, Getmapping, Aerogrid, IGN, IGP, swisstopo, and the GIS User Community

119°52'W 119°51'W 119°50'W 119°49'W 119°48'W 119°47'W 119°46'W 119°45'W 119°44'W 119°43'W 119°42'W 119°41'W 119°40'W 119°39'W 119°38'W