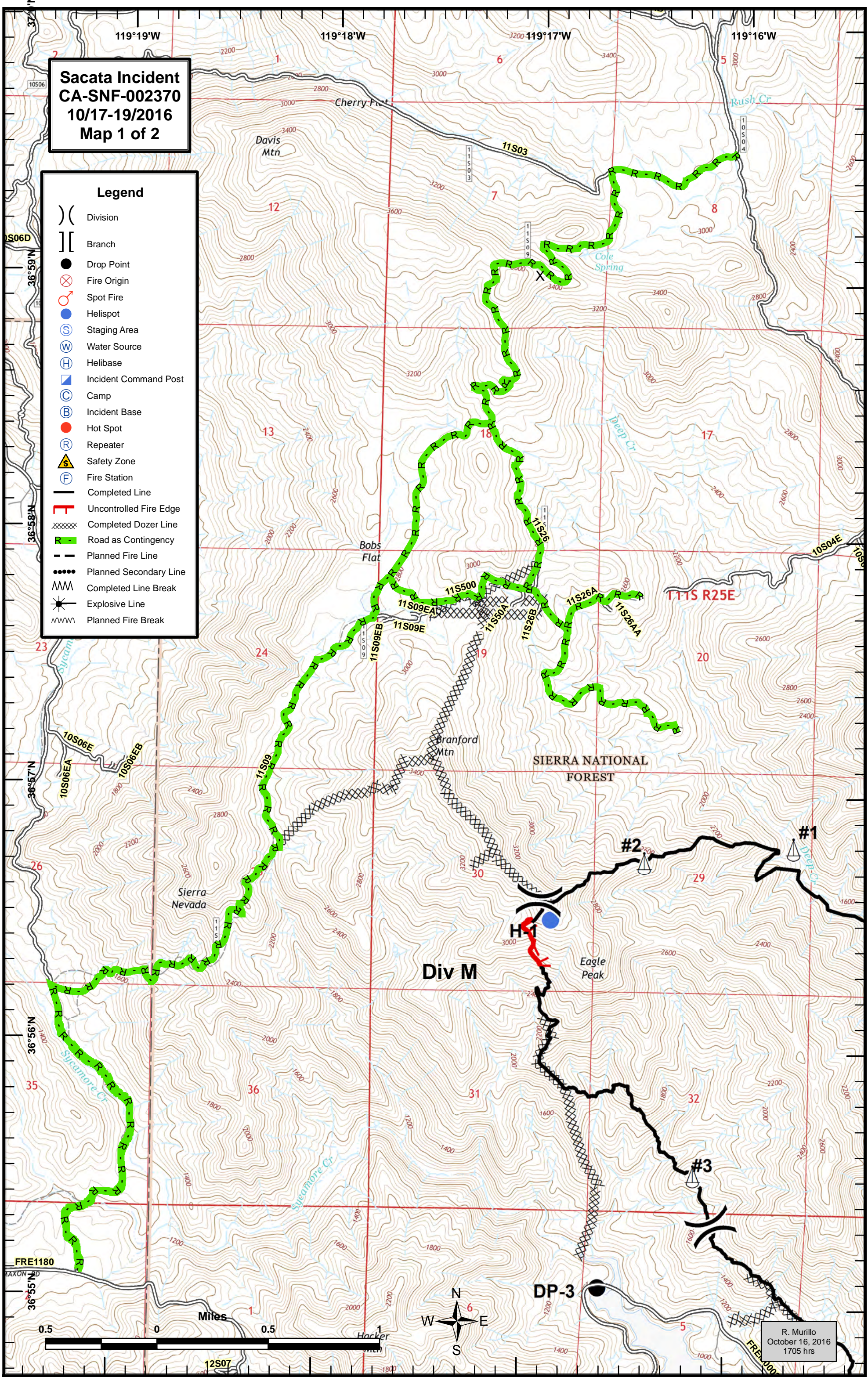


**Sacata Incident  
CA-SNF-002370  
10/17-19/2016  
Map 1 of 2**

- Legend**
- ( ) Division
  - [ ] Branch
  - Drop Point
  - ⊗ Fire Origin
  - Spot Fire
  - Helispot
  - (S) Staging Area
  - (W) Water Source
  - (H) Helibase
  - ▣ Incident Command Post
  - (C) Camp
  - (B) Incident Base
  - Hot Spot
  - (R) Repeater
  - ▲ Safety Zone
  - (F) Fire Station
  - Completed Line
  - ┌ Uncontrolled Fire Edge
  - XXXXX Completed Dozer Line
  - Road as Contingency
  - Planned Fire Line
  - Planned Secondary Line
  - MM Completed Line Break
  - ⚡ Explosive Line
  - MMM Planned Fire Break

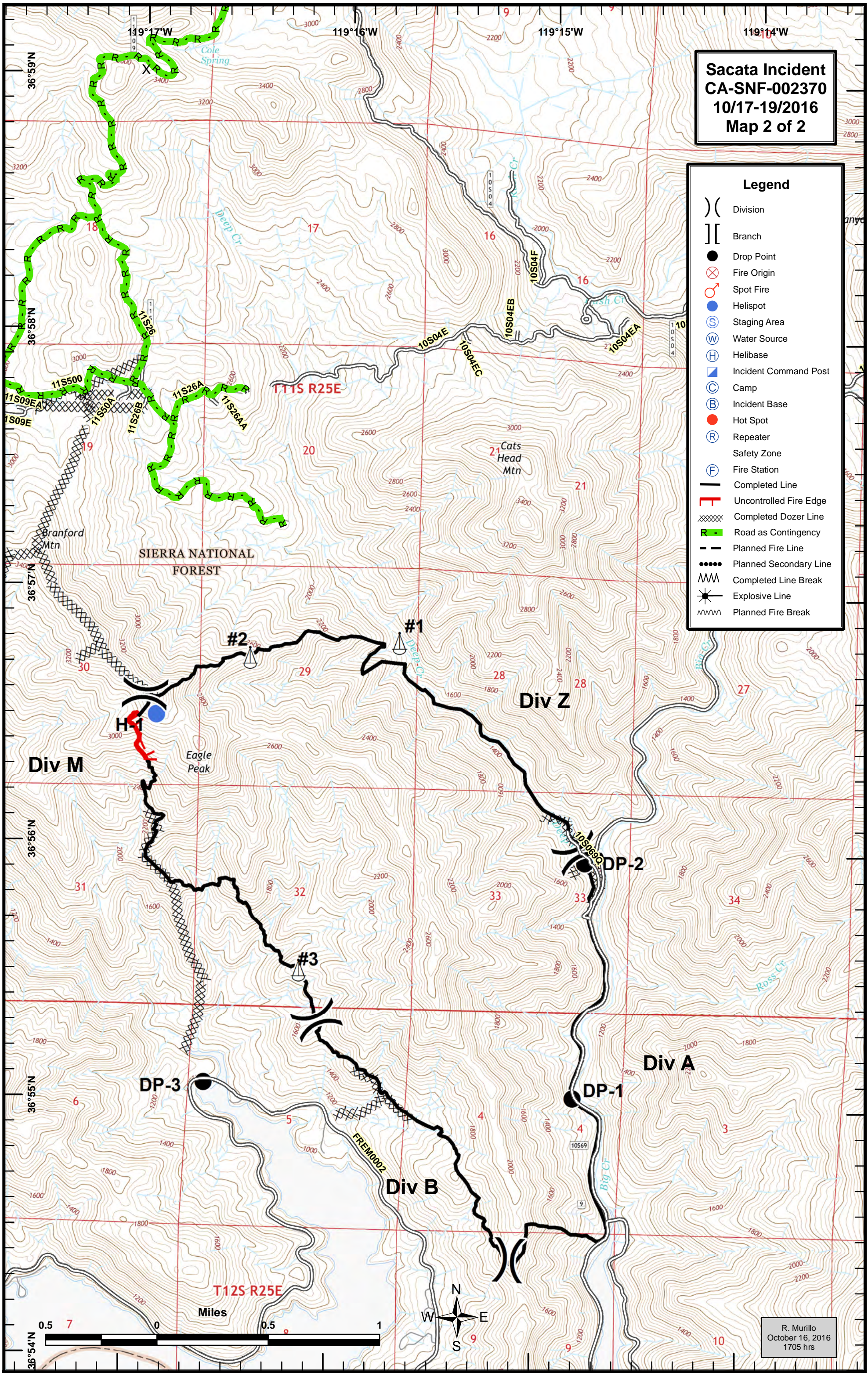


R. Murillo  
October 16, 2016  
1705 hrs

**Sacata Incident  
CA-SNF-002370  
10/17-19/2016  
Map 2 of 2**

**Legend**

- ) ( Division
- ] [ Branch
- Drop Point
- ⊗ Fire Origin
- ⊕ Spot Fire
- Helispot
- ⊙ Staging Area
- ⊙ Water Source
- ⊙ Helibase
- ⊙ Incident Command Post
- ⊙ Camp
- ⊙ Incident Base
- Hot Spot
- ⊙ Repeater
- Safety Zone
- ⊙ Fire Station
- Completed Line
- Uncontrolled Fire Edge
- ⊗ Completed Dozer Line
- Road as Contingency
- Planned Fire Line
- Planned Secondary Line
- Completed Line Break
- ⊙ Explosive Line
- Planned Fire Break



R. Murillo  
October 16, 2016  
1705 hrs