

IAP MAP

Cedar Incident

CA-SQF-002595

August 22, 2016

0600 hours

Index Page

6 Miles

- Dozer Avoidance Area
- Dozer Avoidance Area
- Private_Roads
- Powerlines
- Lakelsabella
- IndexTiles
- Camp
- Drop Point
- Helibase
- Helispot
- Incident Command Post
- Repeater
- Water Dip
- Other
- Division
- Branch

- Uncontrolled Fire Edge
- Completed Dozer Line
- Completed Line
- H - H Hand Line
- Planned Fire Line
- Proposed Dozer Line

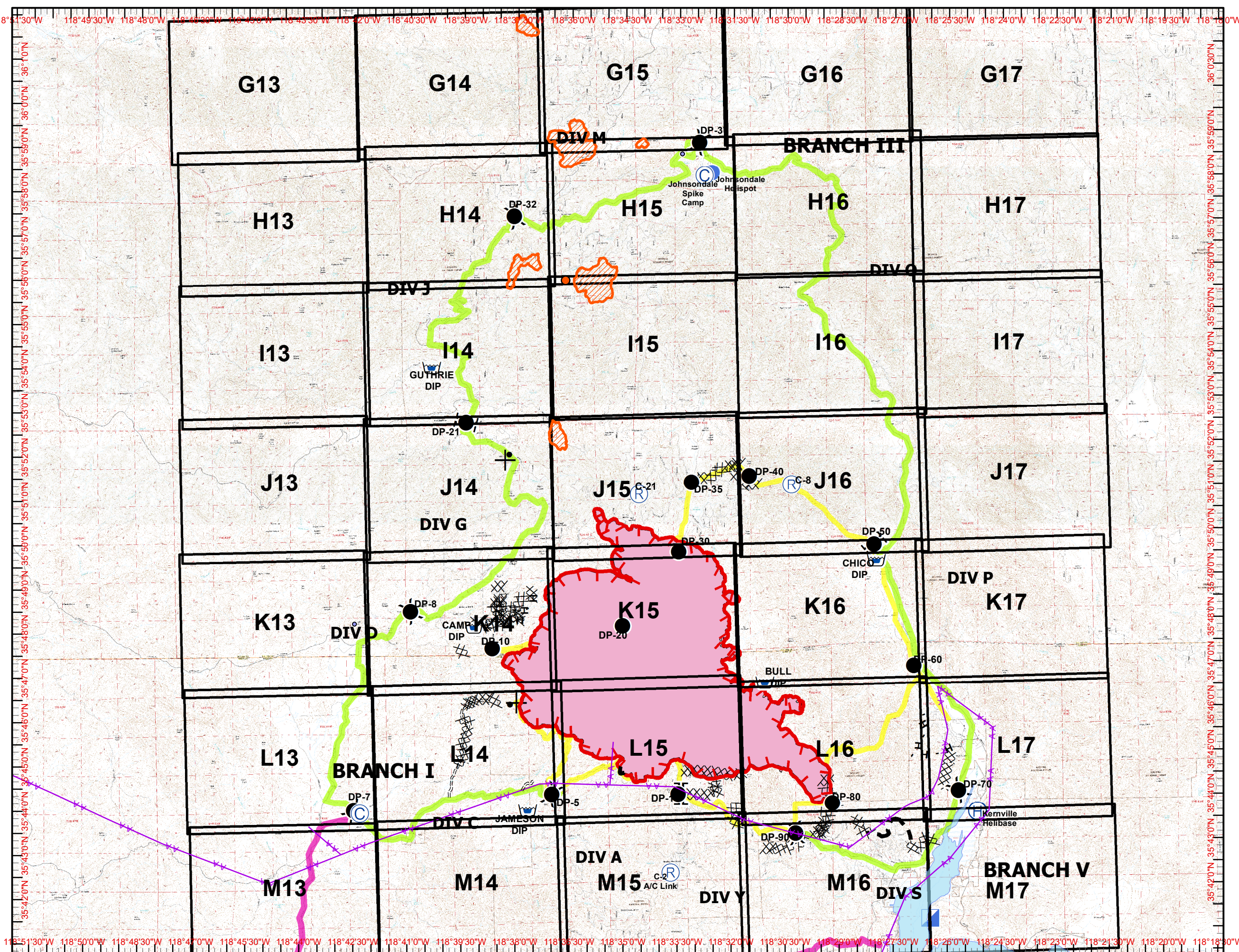
Planning Lines

- Name
- Alternate South
 - Alternate North
 - Primary



NAD83 UTM 11N

Created on Monday Aug 22, 2016



118°51'30"W 118°49'30"W 118°48'0"W 118°45'30"W 118°45'0"W 118°43'30"W 118°42'0"W 118°40'30"W 118°39'0"W 118°37'30"W 118°36'0"W 118°34'30"W 118°33'0"W 118°31'30"W 118°30'0"W 118°28'30"W 118°27'0"W 118°25'30"W 118°24'0"W 118°22'30"W 118°21'0"W 118°19'30"W 118°18'0"W

36°10'N 35°59'0"N 35°58'0"N 35°57'0"N 35°56'0"N 35°55'0"N 35°54'0"N 35°53'0"N 35°52'0"N 35°51'0"N 35°50'0"N 35°49'0"N 35°48'0"N 35°47'0"N 35°46'0"N 35°45'0"N 35°44'0"N 35°43'0"N 35°42'0"N 35°41'0"N 35°40'0"N 35°39'0"N 35°38'0"N 35°37'0"N 35°36'0"N 35°35'0"N 35°34'0"N 35°33'0"N 35°32'0"N 35°31'0"N 35°30'0"N 35°29'0"N 35°28'0"N 35°27'0"N 35°26'0"N 35°25'0"N 35°24'0"N 35°23'0"N 35°22'0"N 35°21'0"N 35°20'0"N 35°19'0"N 35°18'0"N

118°51'30"W 118°50'0"W 118°48'30"W 118°47'0"W 118°45'30"W 118°44'0"W 118°42'30"W 118°41'0"W 118°39'30"W 118°38'0"W 118°36'30"W 118°35'0"W 118°33'30"W 118°32'0"W 118°30'30"W 118°29'0"W 118°27'30"W 118°26'0"W 118°24'30"W 118°23'0"W 118°21'30"W 118°20'0"W 118°18'30"W