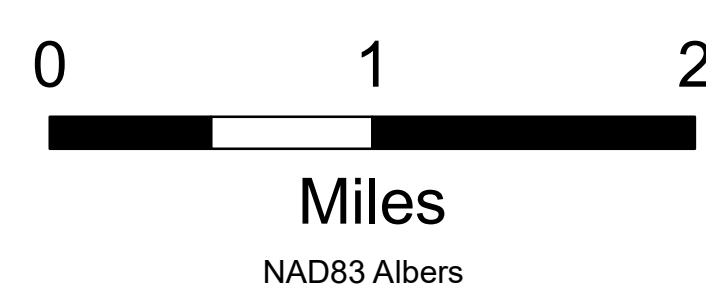
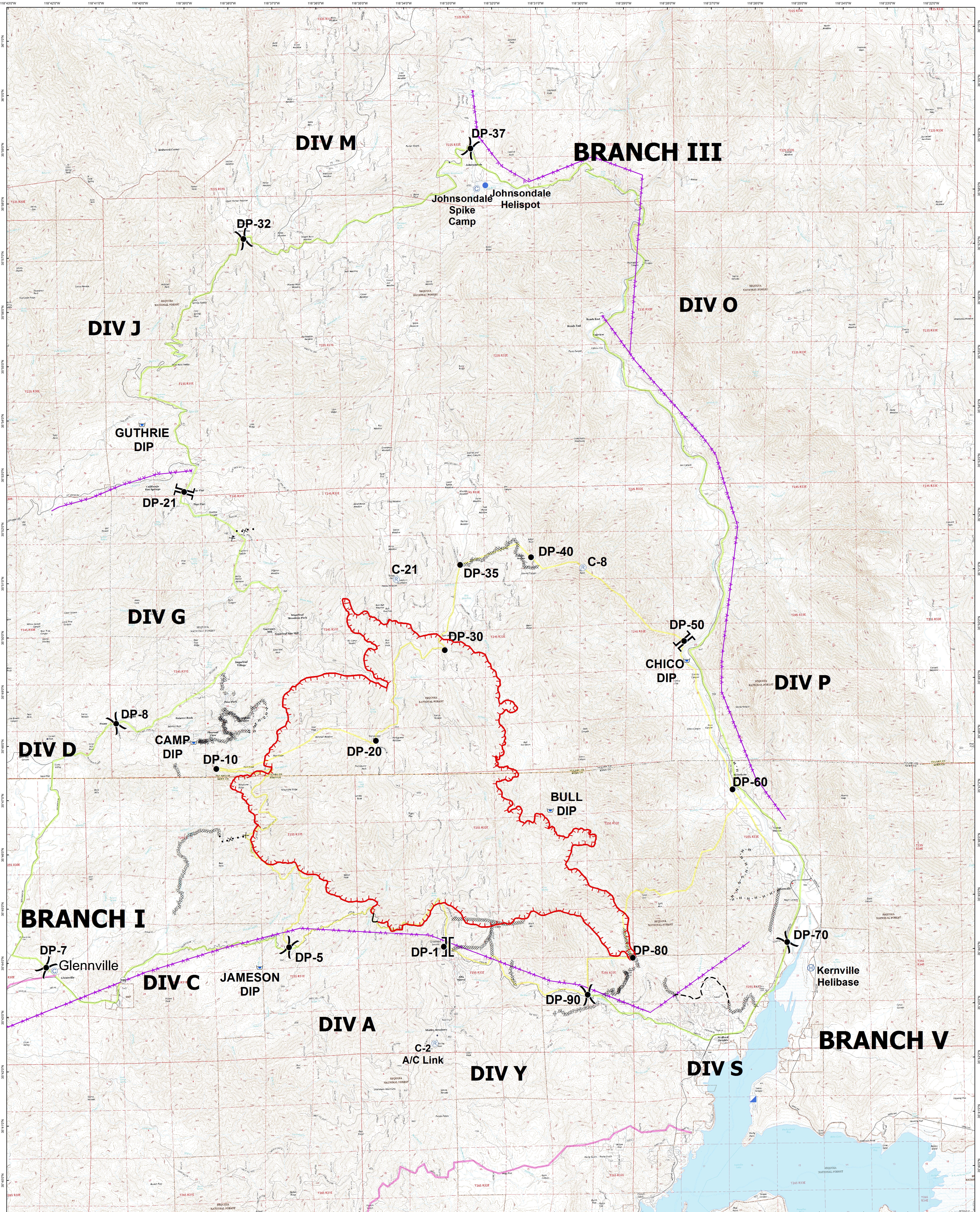


OPERATIONS BRIEFING

Aug 22, 2016; 0600 Hrs; Acres 19,629

*Acerage current as of 08/21; 2143

CEDAR FIRE CA-SQF-002595



| | | | | | | | | | |
|-----|----------------|---|-----------------------|---|------------|---|------------|---|-----------------|
| () | Division | — | Uncontrolled Fireline | — | Powerlines | Ⓡ | Repeater | — | Planning Lines |
| | Branch | — | Completed Dozer Line | ● | Drop Point | Ⓢ | Spike Camp | — | Alternate South |
| — | Completed Line | — | Hand line | Ⓡ | ICP | Ⓢ | Dip Site | — | Alternate North |
| | | | | | | | | | Primary |

