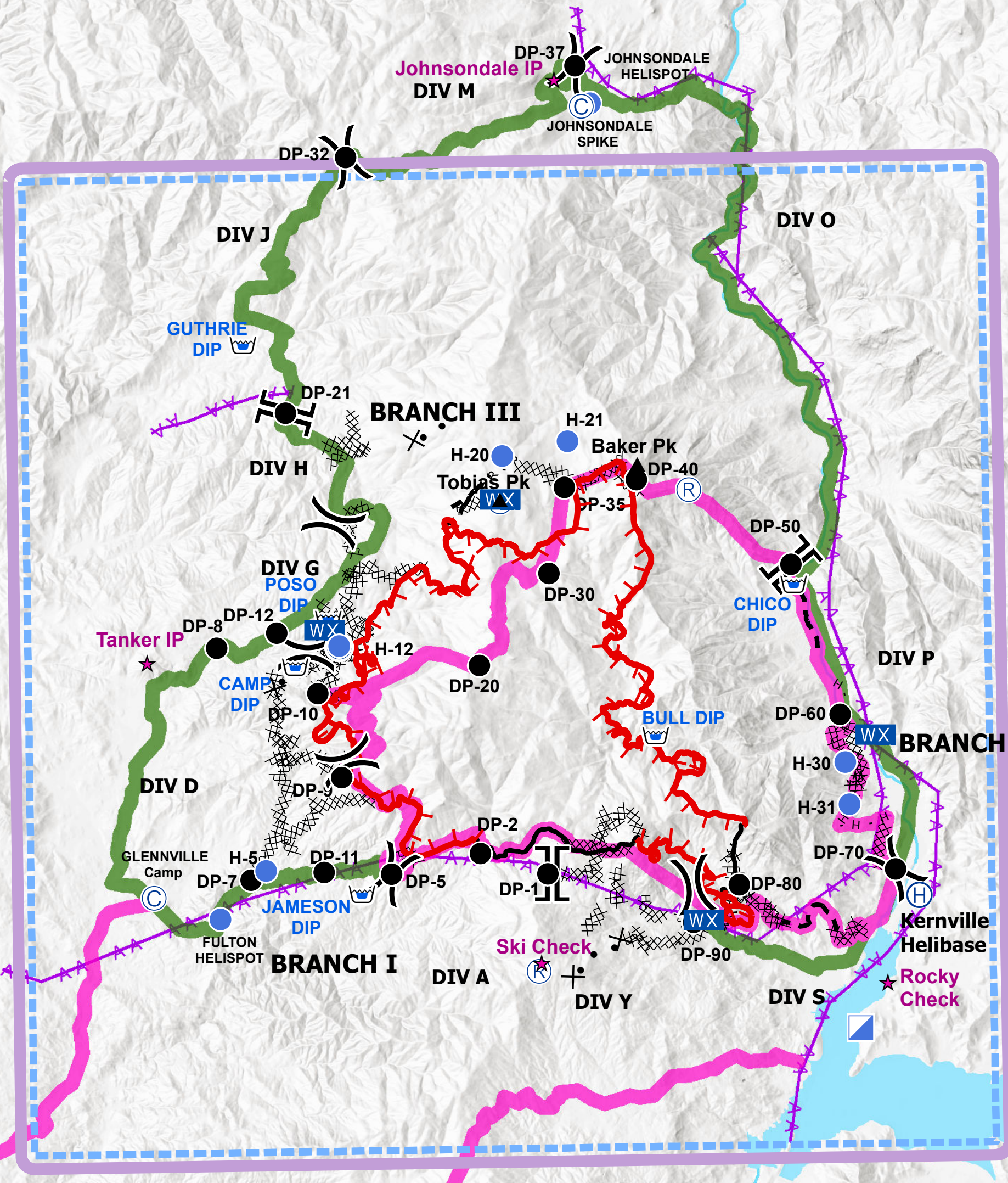


**Cedar Fire**  
**CA-SQF-002595**  
**August 25, 2016**  
**Day Shift**  
**23,239 Acres**  
**\*Acreage current**  
**as of 8/24; 1900**



	Division		Uncontrolled Fireline		Proposed Dozer Line		Repeater		Mobile Weather Station		IP Checks
	Branch		Completed Dozer Line		Powerlines		Spike Camp		Fire Station		<b>Planning Lines</b> Alternate South Alternate North TFR
	Completed Line		H - H - Hand line		ICP		Dip Site		Drop Point		

118°45'W 118°43.5'W 118°42'W 118°40.5'W 118°39'W 118°37.5'W 118°36'W 118°34.5'W 118°33'W 118°31.5'W 118°30'W 118°28.5'W 118°27'W 118°25.5'W 118°24'W 118°22.5'W

36°6.49998'N 36°5.99998'N 36°5.49998'N 36°4.99998'N 36°4.49998'N 36°3.99998'N 36°3.49998'N 36°2.99998'N 36°2.49998'N 36°1.99998'N 36°1.49998'N 36°0.99998'N 36°0.49998'N 35°58.99998'N 35°58.49998'N 35°57.99998'N 35°57.49998'N 35°56.99998'N 35°56.49998'N 35°55.99998'N 35°55.49998'N 35°54.99998'N 35°54.49998'N 35°53.99998'N 35°53.49998'N 35°52.99998'N 35°52.49998'N 35°51.99998'N 35°51.49998'N 35°50.99998'N 35°50.49998'N 35°49.99998'N 35°49.49998'N 35°48.99998'N 35°48.49998'N 35°47.99998'N 35°47.49998'N 35°46.99998'N 35°46.49998'N 35°45.99998'N 35°45.49998'N 35°44.99998'N 35°44.49998'N 35°43.99998'N 35°43.49998'N 35°42.99998'N 35°42.49998'N 35°41.99998'N 35°41.49998'N 35°40.99998'N 35°40.49998'N 35°39.99998'N 35°39.49998'N 35°38.99998'N 35°38.49998'N 35°37.99998'N 35°37.49998'N