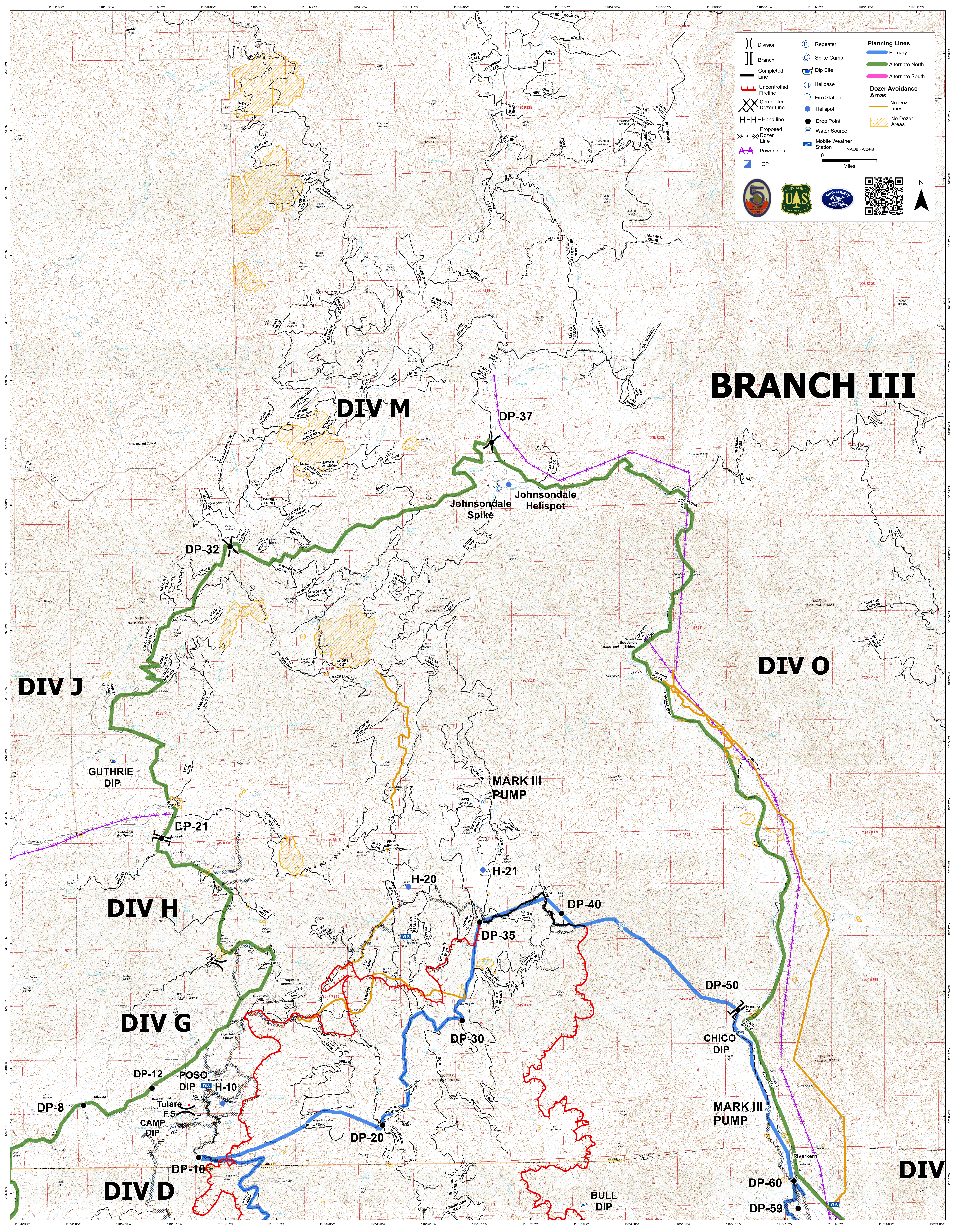


BRANCH III

Aug 26, 2016; 0600 Hrs ; Acres 26,845 *Acreage current as of 08/25; 0805 PDT

CEDAR FIRE CA-SQF-002595



Legend

- Division (Symbol)
- Branch (Symbol)
- Completed Line (Symbol)
- Uncontrolled Fireline (Symbol)
- Completed Dozer Line (Symbol)
- H-H=Hand line (Symbol)
- Proposed Dozer Line (Symbol)
- Powerlines (Symbol)
- ICP (Symbol)
- Repeater (Symbol)
- Spike Camp (Symbol)
- Dip Site (Symbol)
- Helibase (Symbol)
- Fire Station (Symbol)
- Helispot (Symbol)
- Drop Point (Symbol)
- Water Source (Symbol)
- Mobile Weather Station (Symbol)
- NAD83 Albers (Text)
- Scale: 0 to 1 Miles
- Logos: 5, UAS, Kern County
- QR Code
- North Arrow

Planning Lines

- Primary (Blue line)
- Alternate North (Green line)
- Alternate South (Pink line)

Dozer Avoidance Areas

- No Dozer Lines (Yellow hatched area)
- No Dozer Areas (Orange hatched area)

BRANCH III

DIV J

DIV M

DIV O

DIV H

DIV G

DIV D

DIV

Johnsondale Spike

Johnsondale Helispot

MARK III PUMP

CHICO DIP

MARK III PUMP

BULL DIP

POSOS DIP

CAMP DIP

DP-10

DP-21

DP-32

DP-30

DP-35

DP-40

DP-50

DP-59

DP-60

DP-37

GUTHRIE DIP

Tulare F.S.

CAMP DIP

DP-10

DP-21

DP-32

DP-30

DP-35

DP-40

DP-50

DP-59

DP-60

DP-37