

118°41'0"W 118°40'0"W 118°39'0"W 118°38'0"W 118°37'0"W 118°36'0"W

35°48'0"N

35°47'0"N

35°46'0"N

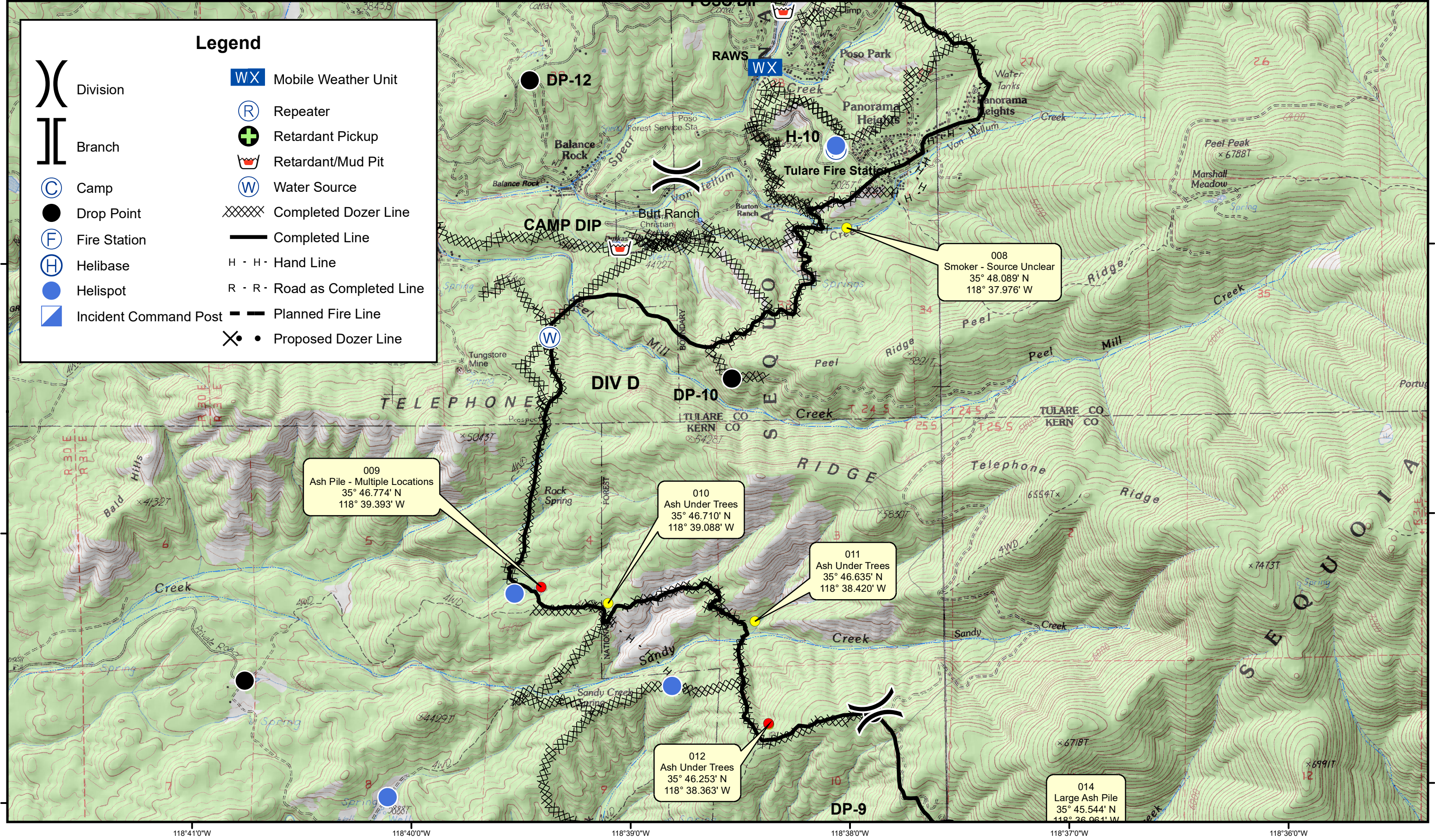
35°48'0"N

35°47'0"N

35°46'0"N

Legend

- () Division
- [] Branch
- (C) Camp
- (●) Drop Point
- (F) Fire Station
- (H) Helibase
- (●) Helispot
- (■) Incident Command Post
- (WX) Mobile Weather Unit
- (R) Repeater
- (+) Retardant Pickup
- (☙) Retardant/Mud Pit
- (W) Water Source
- (XXXX) Completed Dozer Line
- (—) Completed Line
- (H · H ·) Hand Line
- (R · R ·) Road as Completed Line
- (- - -) Planned Fire Line
- (X · ●) Proposed Dozer Line



009
Ash Pile - Multiple Locations
35° 46.774' N
118° 39.393' W

010
Ash Under Trees
35° 46.710' N
118° 39.088' W

011
Ash Under Trees
35° 46.635' N
118° 38.420' W

012
Ash Under Trees
35° 46.253' N
118° 38.363' W

014
Large Ash Pile
35° 45.544' N
118° 36.961' W

008
Smoker - Source Unclear
35° 48.089' N
118° 37.976' W

- (●) Hot Spot - Significant Priority (Considerable Threat to Fireline)
- (●) Hot Spot - Moderate Priority (Possible Threat to Fireline)
- (🔥) Live Fire - Uncontained Spot Fire or Fire Front

Cedar Fire
CA-SQF-002595

Infrared Data Captured on 20160903 @ 1400



Div D

