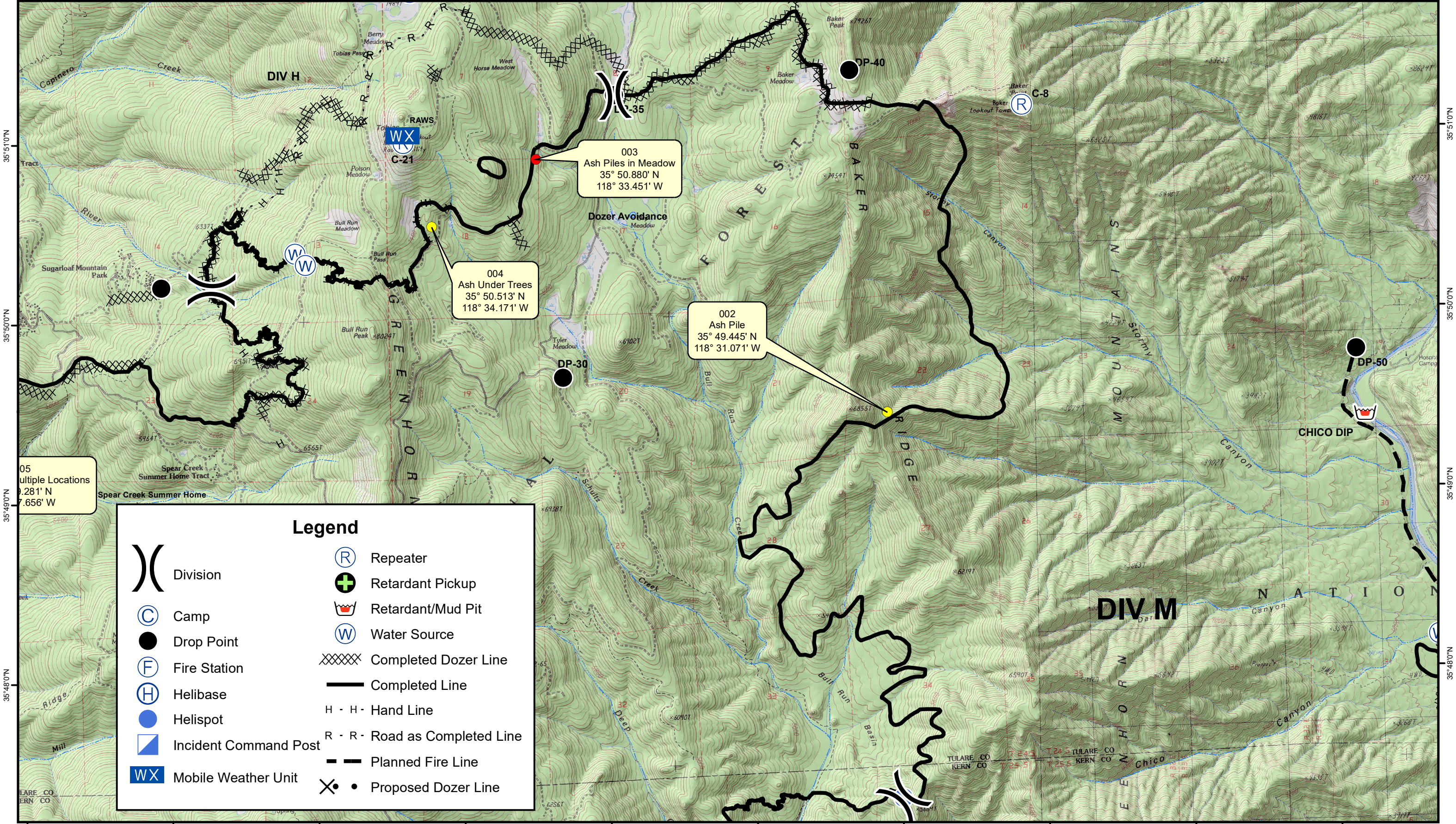


118°36'0"W 118°35'0"W 118°34'0"W 118°33'0"W 118°32'0"W 118°31'0"W 118°30'0"W 118°29'0"W 118°28'0"W



Legend

- | | | | |
|--|-----------------------|--|--------------------------------|
| | Division | | Repeater |
| | Camp | | Retardant Pickup |
| | Drop Point | | Retardant/Mud Pit |
| | Fire Station | | Water Source |
| | Helibase | | Completed Dozer Line |
| | Helispot | | Completed Line |
| | Incident Command Post | | H - H - Hand Line |
| | Mobile Weather Unit | | R - R - Road as Completed Line |
| | | | Planned Fire Line |
| | | | Proposed Dozer Line |



- Moderate - Possible Threat to Fireline
- Significant - Considerable Threat to the Fireline
- Live Fire - Uncontained Spot Fire or Fire Front

Cedar Fire
CA-SQF-002595

Infrared Data Captured on 20160904 @ 0925
0 0.25 0.5 1 1.5 2 Miles

Div M

September 4, 2016