

118°45'0"W 118°40'0"W 118°35'0"W 118°30'0"W 118°25'0"W

36°55'0"N

36°50'0"N

36°45'0"N

118°45'0"W 118°40'0"W 118°35'0"W 118°30'0"W 118°25'0"W

36°55'0"N

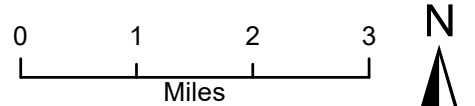
36°50'0"N

36°45'0"N

IAP MAP Cedar Incident CA-SQF-002595 September 7, 2016

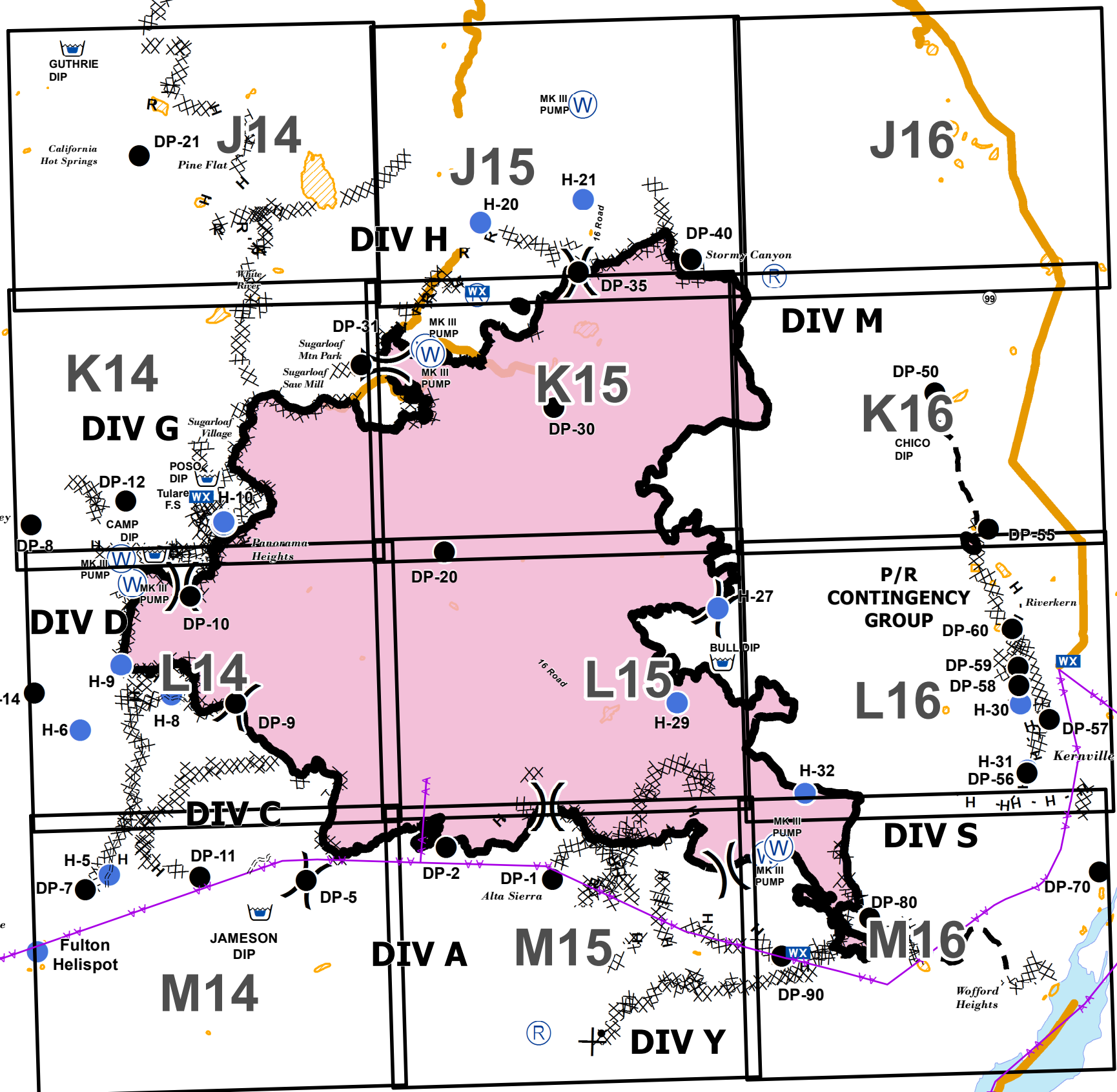
Index Page

- () Division
- Drop Point
- (F) Fire Station
- (H) Helibase
- Helispot
- (W) Water Source
- ▣ Incident Command Post
- WX Mobile Weather Unit
- (R) Repeater
- (DIP) Dip Site
- (+) Mobile Retardant Base
- XXXXX Completed Dozer Line
- Completed Line
- H - H Hand Line
- R - R Road as Completed Line
- - - Planned Fire Line
- ⊗ Proposed Dozer Line
- Powerlines
- Dozer Avoidance
- ▨ Dozer Avoidance
- ▭ Lake Isabella



NAD83 UTM 11N

Created on Tuesday Sep 06, 2016



IAP MAP
Cedar Incident
CA-SQF-002595
September 7, 2016
Page J14

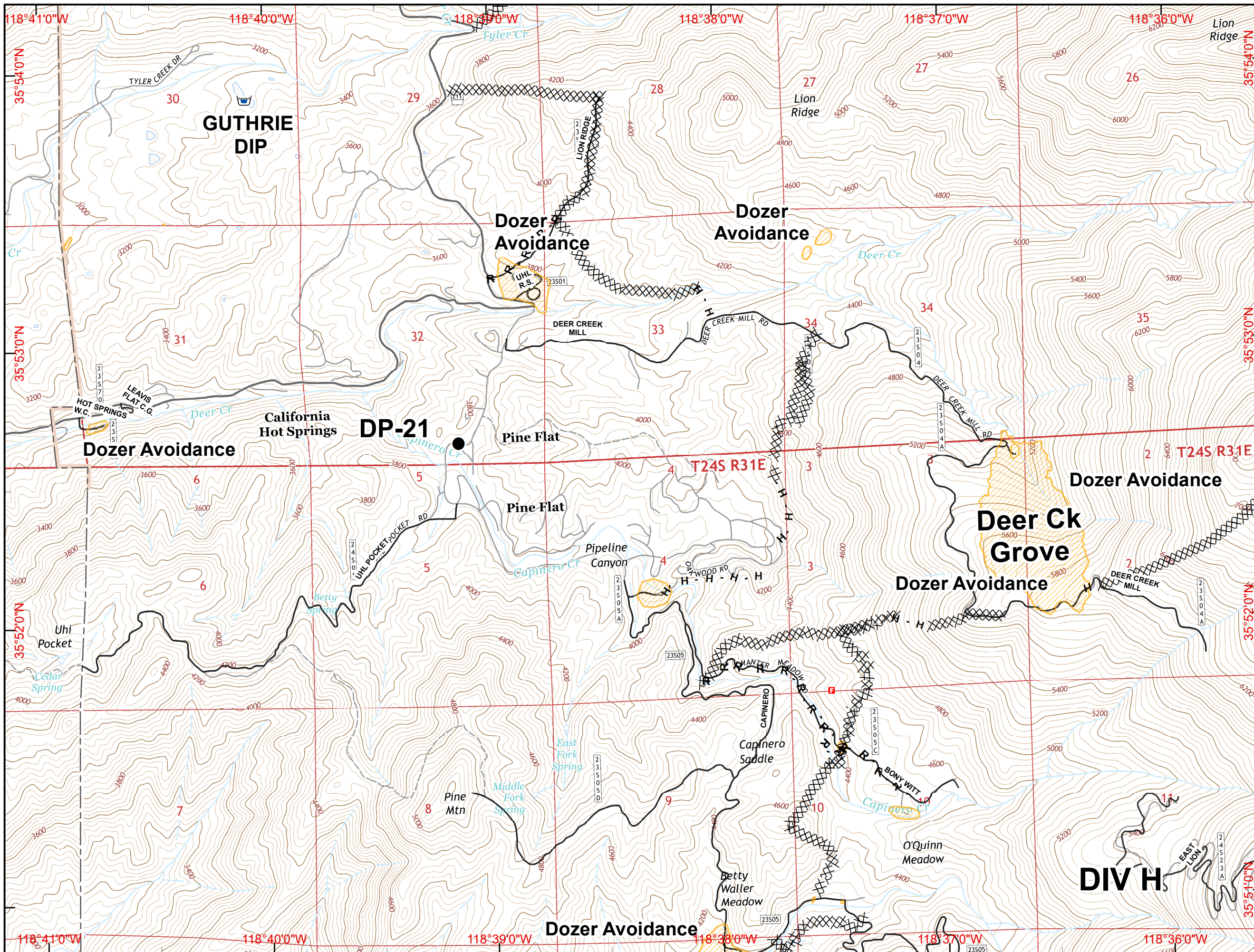
J14	J15	J16
K14	K15	K16
L14	L15	L16
M14	M15	M16

- Division
- Drop Point
- Fire Station
- Helibase
- Helispot
- Water Source
- Incident Command Post
- Mobile Weather Unit
- Repeater
- Mobile Retardant Base
- Dip Site
- Completed Dozer Line
- Completed Line
- Hand Line
- Road as Completed Line
- Planned Fire Line
- Proposed Dozer Line
- Powerlines
- Dozer Avoidance
- Dozer Avoidance
- Lake Isabella

0 0.25 0.5 Miles



SCALE: 1:24,000 NAD83
 Created on Tuesday Sep 06, 2016



IAP MAP
Cedar Incident
CA-SQF-002595
September 7, 2016
Page J15

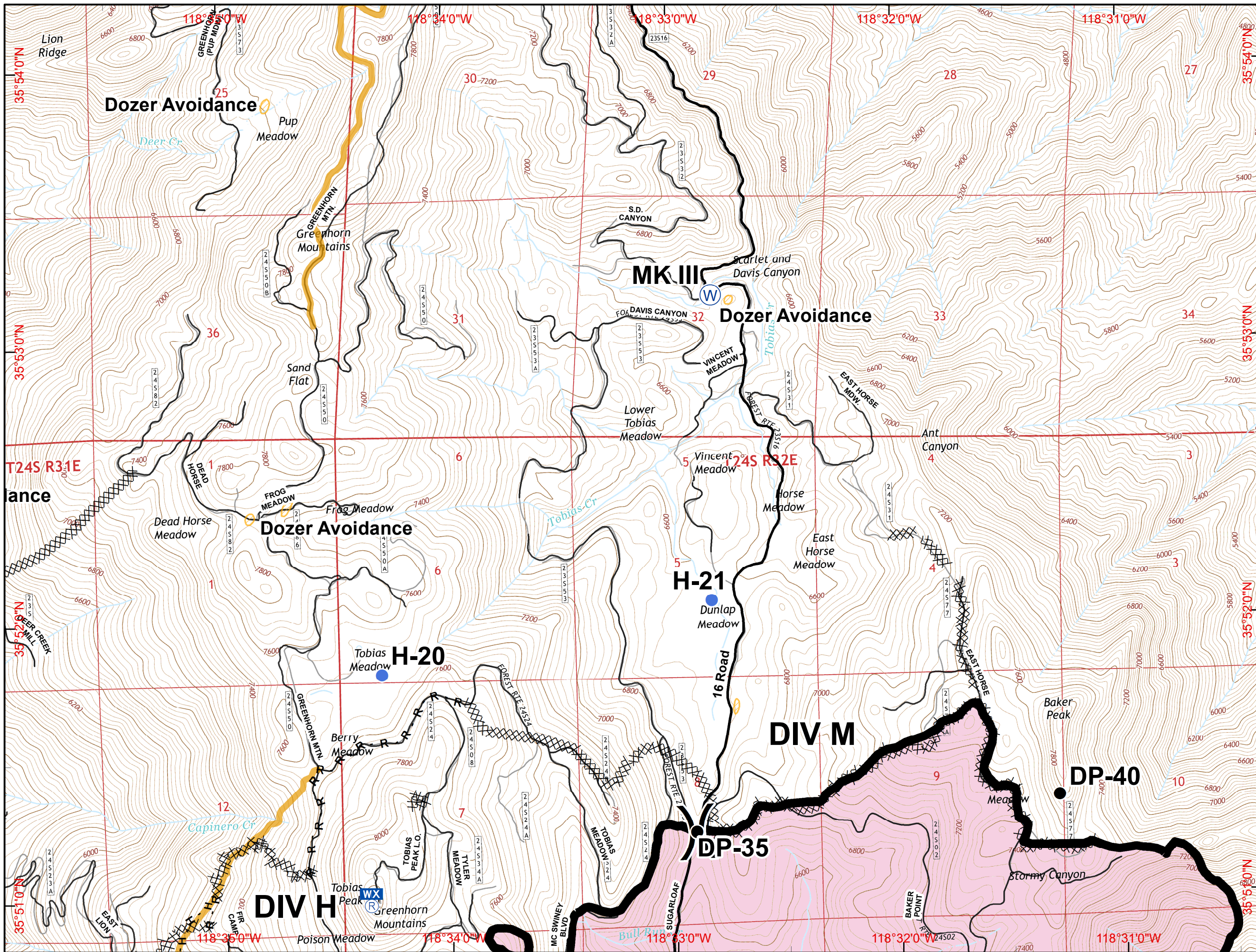
J14	J15	J16
K14	K15	K16
L14	L15	L16
M14	M15	M16

- () Division
- Drop Point
- (F) Fire Station
- (H) Helibase
- (●) Helispot
- (W) Water Source
- (ICP) Incident Command Post
- (WX) Mobile Weather Unit
- (R) Repeater
- (+M) Mobile Retardant Base
- (D) Dip Site
- XXXXX Completed Dozer Line
- Completed Line
- H - H Hand Line
- R - R Road as Completed Line
- - - Planned Fire Line
- X • Proposed Dozer Line
- Powerlines
- Dozer Avoidance
- ▨ Dozer Avoidance
- Lake Isabella

0 0.25 0.5 Miles



SCALE: 1:24,000 NAD83
 Created on Tuesday Sep 06, 2016



IAP MAP
Cedar Incident
CA-SQF-002595
September 7, 2016
Page J16

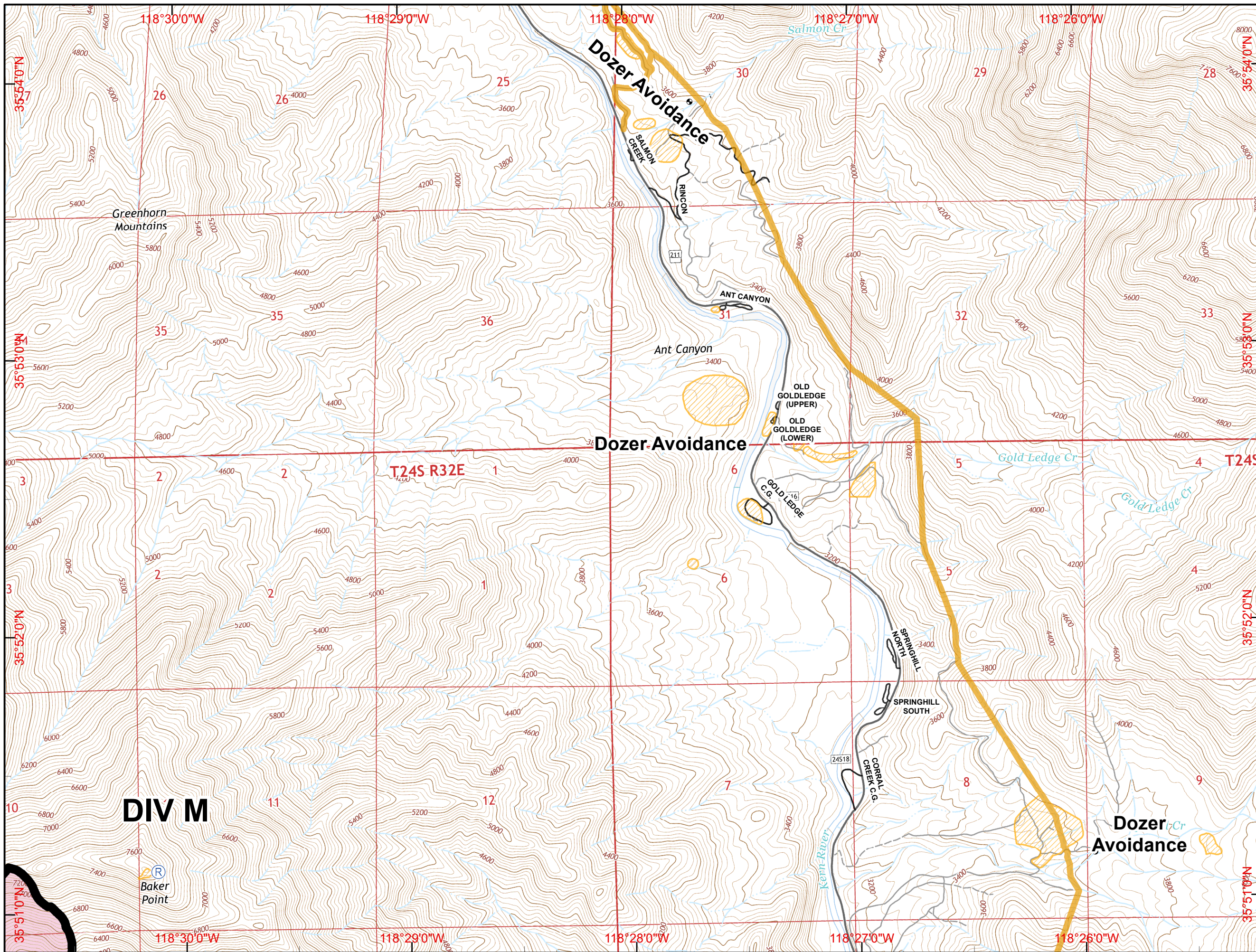
J14	J15	J16
K14	K15	K16
L14	L15	L16
M14	M15	M16

- Division
- Drop Point
- Fire Station
- Helibase
- Helispot
- Water Source
- Incident Command Post
- Mobile Weather Unit
- Repeater
- Mobile Retardant Base
- Dip Site
- Completed Dozer Line
- Completed Line
- H - H Hand Line
- R - R Road as Completed Line
- Planned Fire Line
- Proposed Dozer Line
- Powerlines
- Dozer Avoidance
- Dozer Avoidance
- Lake Isabella

0 0.25 0.5 Miles



SCALE: 1:24,000 NAD83
 Created on Tuesday Sep 06, 2016



IAP MAP
Cedar Incident
CA-SQF-002595
September 7, 2016
Page K14

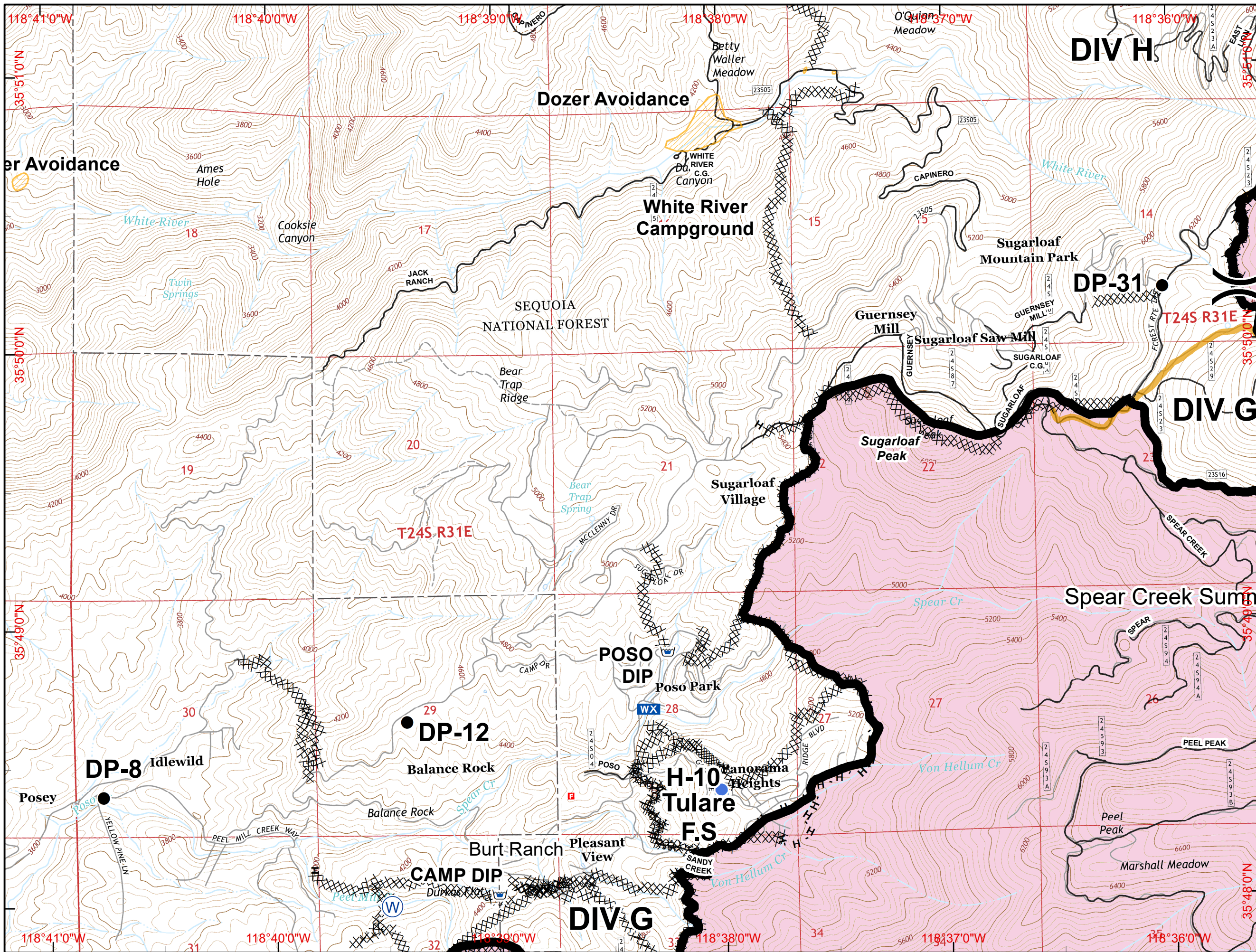
J14	J15	J16
K14	K15	K16
L14	L15	L16
M14	M15	M16

- () Division
- Drop Point
- (F) Fire Station
- (H) Helibase
- (●) Helispot
- (W) Water Source
- (I) Incident Command Post
- (WX) Mobile Weather Unit
- (R) Repeater
- (+G) Mobile Retardant Base
- (D) Dip Site
- XXXXX Completed Dozer Line
- Completed Line
- H - H Hand Line
- R - R Road as Completed Line
- - - Planned Fire Line
- ⊗ Proposed Dozer Line
- Powerlines
- ▨ Dozer Avoidance
- ▨ Dozer Avoidance
- Lake Isabella

0 0.25 0.5 Miles



SCALE: 1:24,000 NAD83
 Created on Tuesday Sep 06, 2016



IAP MAP
Cedar Incident
CA-SQF-002595
September 7, 2016
Page K15

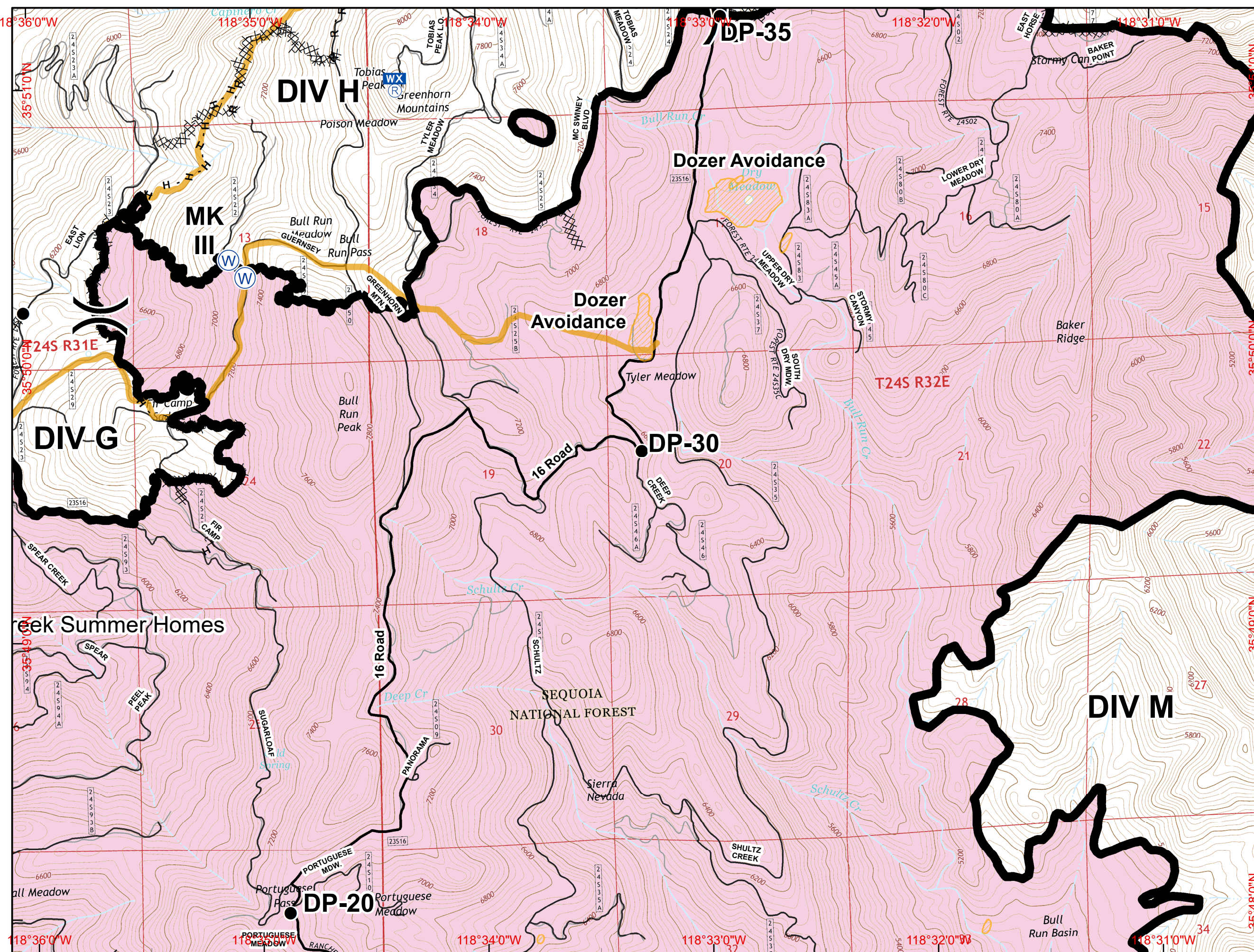
J14	J15	J16
K14	K15	K16
L14	L15	L16
M14	M15	M16

- () Division
- Drop Point
- (F) Fire Station
- (H) Helibase
- (●) Helispot
- (W) Water Source
- (I) Incident Command Post
- (WX) Mobile Weather Unit
- (R) Repeater
- (+) Mobile Retardant Base
- (D) Dip Site
- XXXXX Completed Dozer Line
- Completed Line
- H · H Hand Line
- R · R Road as Completed Line
- Planned Fire Line
- ⊗ Proposed Dozer Line
- Powerlines
- Dozer Avoidance
- ▨ Dozer Avoidance
- Lake Isabella

0 0.25 0.5 Miles

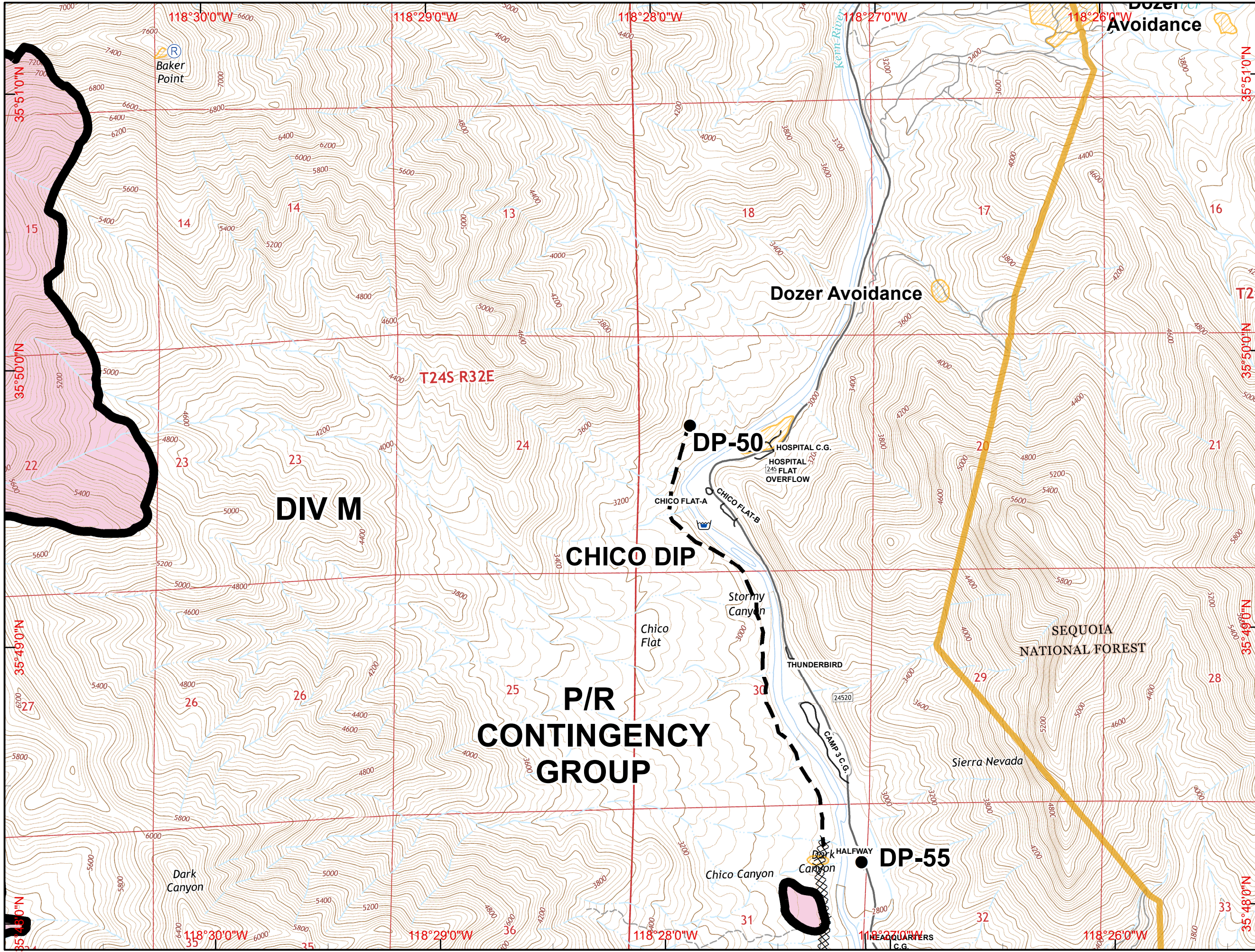


SCALE: 1:24,000 NAD83
 Created on Tuesday Sep 06, 2016



IAP MAP
Cedar Incident
CA-SQF-002595
September 7, 2016
Page K16

J14	J15	J16
K14	K15	K16
L14	L15	L16
M14	M15	M16



- () Division
- Drop Point
- (F) Fire Station
- (H) Helibase
- (B) Helispot
- (W) Water Source
- (ICP) Incident Command Post
- (MWU) Mobile Weather Unit
- (R) Repeater
- (MRB) Mobile Retardant Base
- (DS) Dip Site
- XXXXX Completed Dozer Line
- Completed Line
- H - H Hand Line
- R - R Road as Completed Line
- - - Planned Fire Line
- ⊗ Proposed Dozer Line
- Powerlines
- Dozer Avoidance
- ▨ Dozer Avoidance
- Lake Isabella

0 0.25 0.5 Miles



SCALE: 1:24,000 NAD83
 Created on Tuesday Sep 06, 2016

IAP MAP
Cedar Incident
CA-SQF-002595
September 7, 2016
Page L14

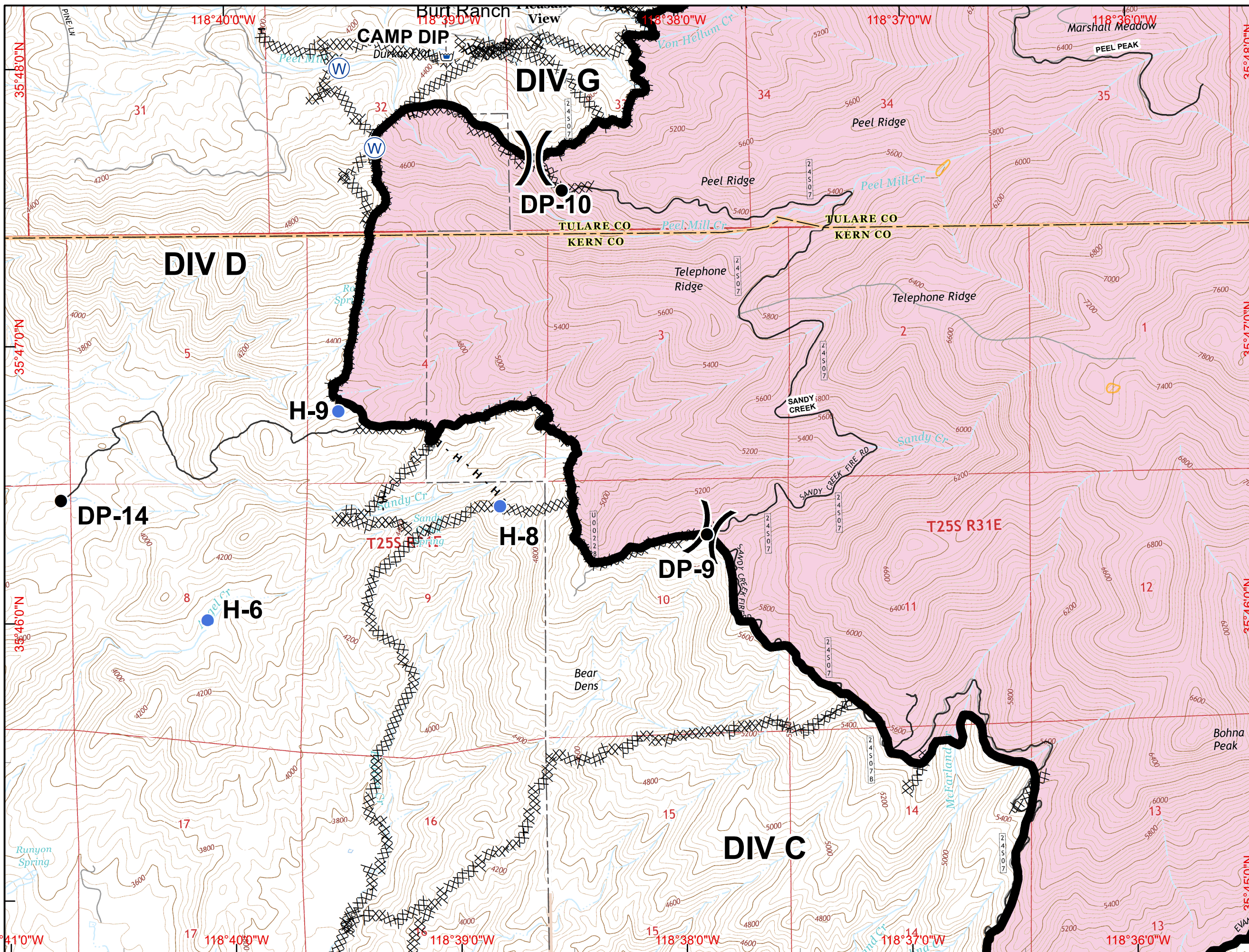
J14	J15	J16
K14	K15	K16
L14	L15	L16
M14	M15	M16

- () Division
- Drop Point
- (F) Fire Station
- (H) Helibase
- Helispot
- (W) Water Source
- ▣ Incident Command Post
- ☒ Mobile Weather Unit
- (R) Repeater
- ⊕ Mobile Retardant Base
- ⌋ Dip Site
- XXXXX Completed Dozer Line
- Completed Line
- H - H Hand Line
- R - R Road as Completed Line
- - - Planned Fire Line
- ⊗ Proposed Dozer Line
- Powerlines
- ▨ Dozer Avoidance
- ▨ Dozer Avoidance
- ▭ Lake Isabella

0 0.25 0.5
 Miles



SCALE: 1:24,000 NAD83
 Created on Tuesday Sep 06, 2016



IAP MAP
Cedar Incident
CA-SQF-002595
September 7, 2016
Page L15

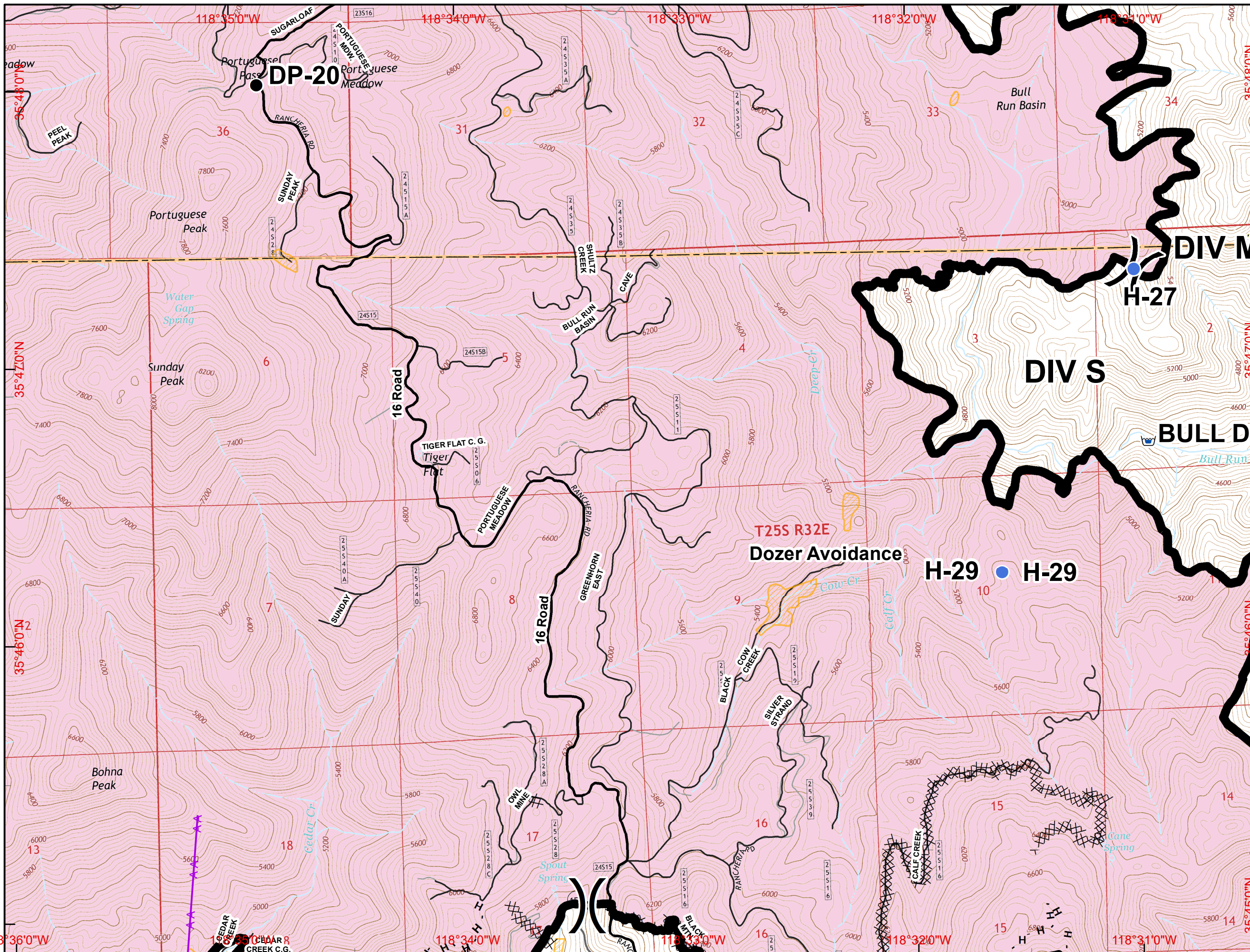
J14	J15	J16
K14	K15	K16
L14	L15	L16
M14	M15	M16

- Division
- Drop Point
- Fire Station
- Helibase
- Helispot
- Water Source
- Incident Command Post
- Mobile Weather Unit
- Repeater
- Mobile Retardant Base
- Dip Site
- Completed Dozer Line
- Completed Line
- H - H Hand Line
- R - R Road as Completed Line
- Planned Fire Line
- Proposed Dozer Line
- Powerlines
- Dozer Avoidance
- Dozer Avoidance
- Lake Isabella

0 0.25 0.5 Miles



SCALE: 1:24,000 NAD83
 Created on Tuesday Sep 06, 2016



DP-20

DIV M
H-27

DIV S

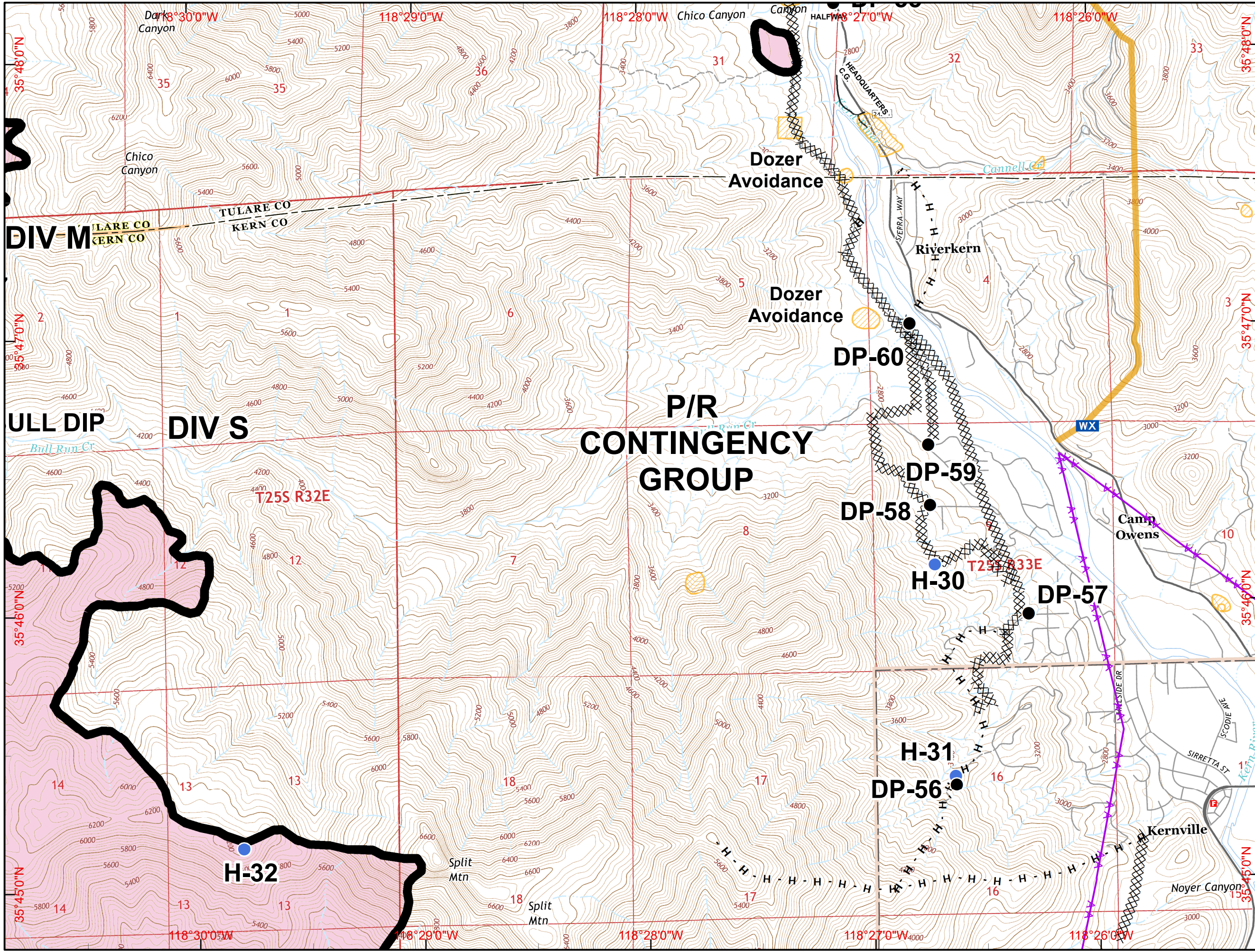
BULL DI

T25S R32E
Dozer Avoidance
H-29

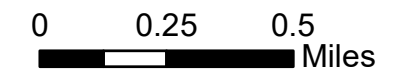
118°36'0"W 118°34'0"W 118°33'0"W 118°32'0"W 118°31'0"W
 35°48'0"N 35°47'0"N 35°46'0"N 35°45'0"N

IAP MAP
Cedar Incident
CA-SQF-002595
September 7, 2016
Page L16

J14	J15	J16
K14	K15	K16
L14	L15	L16
M14	M15	M16



- () Division
- Drop Point
- ⓕ Fire Station
- Ⓜ Helibase
- Helispot
- Ⓜ Water Source
- Ⓜ Incident Command Post
- Ⓜ Mobile Weather Unit
- Ⓜ Repeater
- Ⓜ Mobile Retardant Base
- Ⓜ Dip Site
- XXXXX Completed Dozer Line
- Completed Line
- H - H Hand Line
- R - R Road as Completed Line
- Planned Fire Line
- Ⓜ Proposed Dozer Line
- Powerlines
- Dozer Avoidance
- ▨ Dozer Avoidance
- Lake Isabella

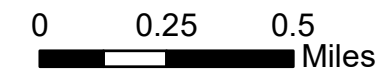


SCALE: 1:24,000 NAD83
 Created on Tuesday Sep 06, 2016

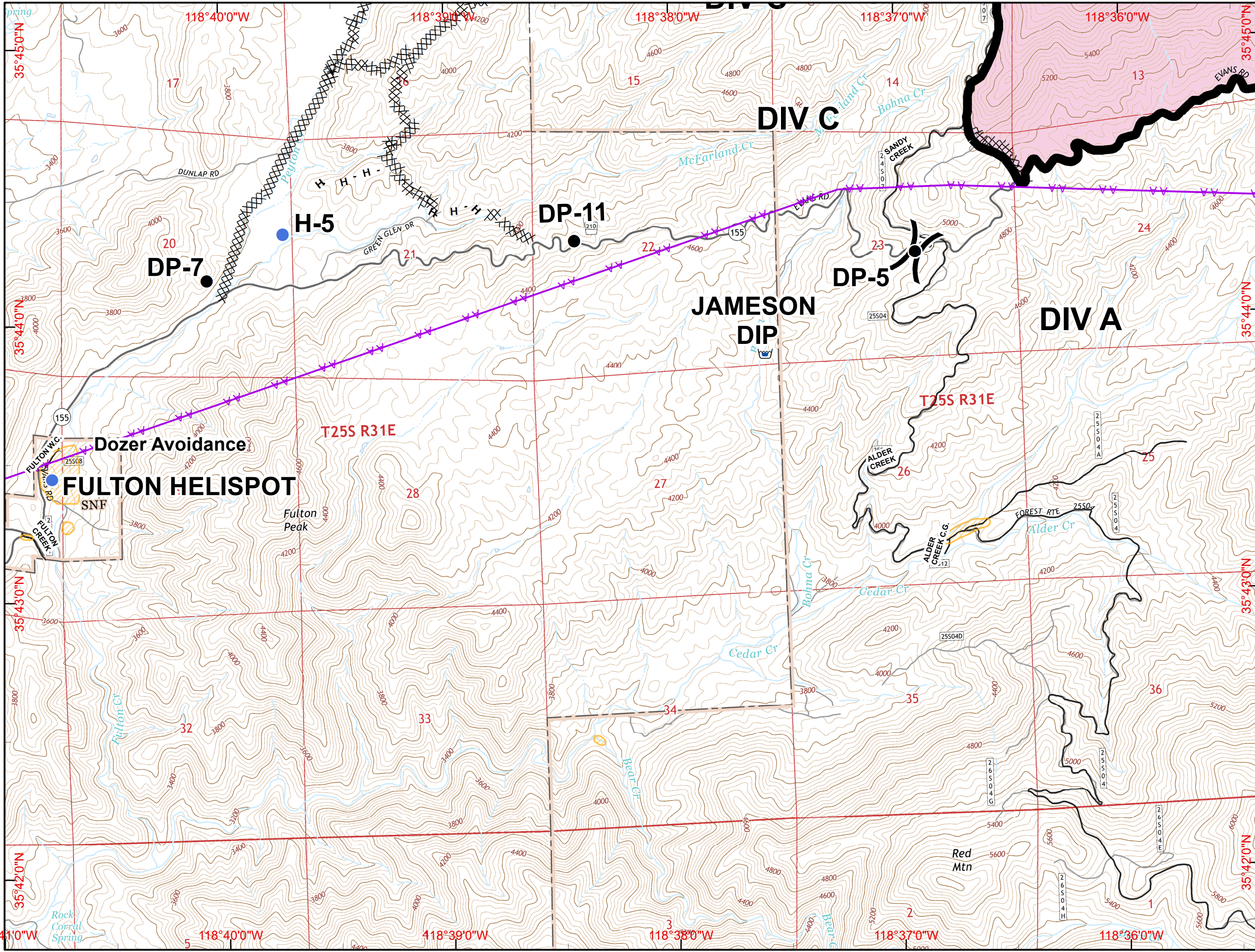
IAP MAP
Cedar Incident
CA-SQF-002595
September 7, 2016
Page M14

J14	J15	J16
K14	K15	K16
L14	L15	L16
M14	M15	M16

- () Division
- Drop Point
- Ⓡ Fire Station
- Ⓜ Helibase
- Helispot
- Ⓜ Water Source
- Ⓜ Incident Command Post
- Ⓜ Mobile Weather Unit
- Ⓜ Repeater
- Ⓜ Mobile Retardant Base
- Ⓜ Dip Site
- XXXXX Completed Dozer Line
- Completed Line
- H - H Hand Line
- R - R Road as Completed Line
- Planned Fire Line
- Ⓜ Proposed Dozer Line
- Powerlines
- Dozer Avoidance
- ▨ Dozer Avoidance
- Ⓜ Lake Isabella



SCALE: 1:24,000 NAD83
 Created on Tuesday Sep 06, 2016



IAP MAP
Cedar Incident
CA-SQF-002595
September 7, 2016
Page M15

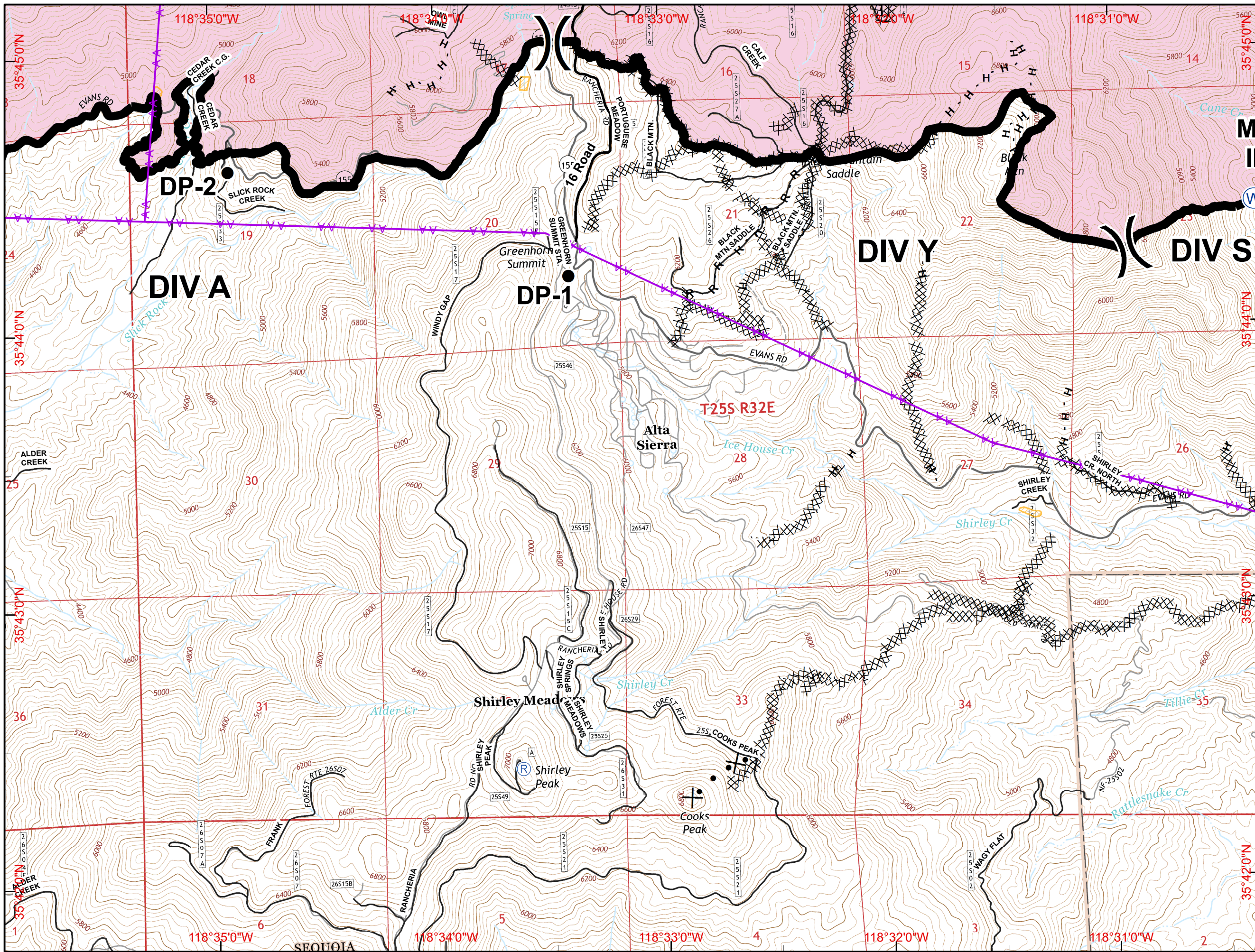
J14	J15	J16
K14	K15	K16
L14	L15	L16
M14	M15	M16

- () Division
- Drop Point
- (F) Fire Station
- (H) Helibase
- (H) Helispot
- (W) Water Source
- (ICP) Incident Command Post
- (MWU) Mobile Weather Unit
- (R) Repeater
- (MRB) Mobile Retardant Base
- (DS) Dip Site
- XXXXX Completed Dozer Line
- Completed Line
- H - H Hand Line
- R - R Road as Completed Line
- Planned Fire Line
- X • Proposed Dozer Line
- Powerlines
- Dozer Avoidance
- ▨ Dozer Avoidance
- Lake Isabella

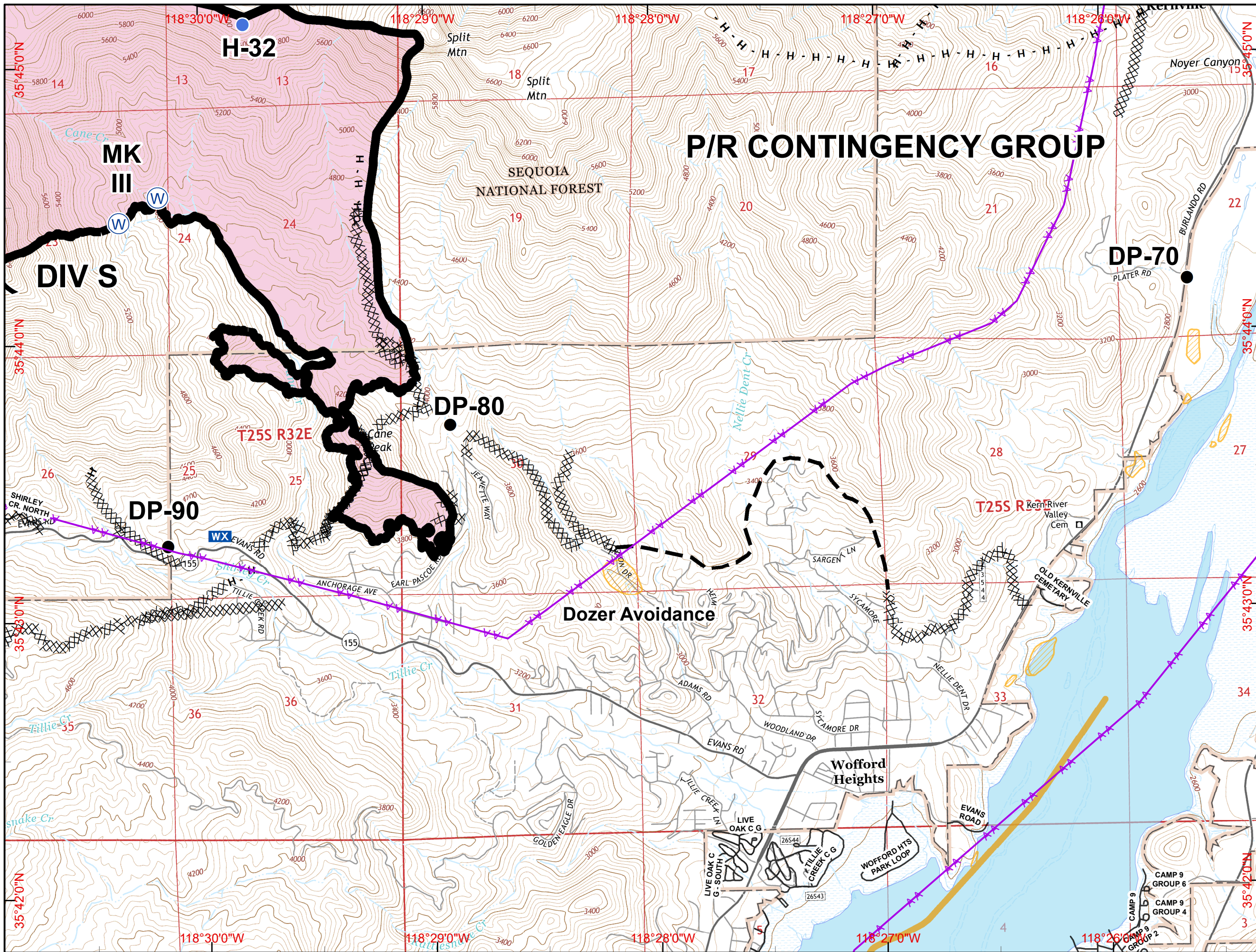
0 0.25 0.5 Miles



SCALE: 1:24,000 NAD83
 Created on Tuesday Sep 06, 2016



J14	J15	J16
K14	K15	K16
L14	L15	L16
M14	M15	M16



- () Division
- Drop Point
- ⓕ Fire Station
- Ⓜ Helibase
- Helispot
- Ⓜ Water Source
- Ⓜ Incident Command Post
- Ⓜ Mobile Weather Unit
- Ⓜ Repeater
- Ⓜ Mobile Retardant Base
- Ⓜ Dip Site
- XXXXX Completed Dozer Line
- Completed Line
- H - H Hand Line
- R - R Road as Completed Line
- - - Planned Fire Line
- Ⓜ Proposed Dozer Line
- Powerlines
- Dozer Avoidance
- ▨ Dozer Avoidance
- ▭ Lake Isabella

0 0.25 0.5 Miles

