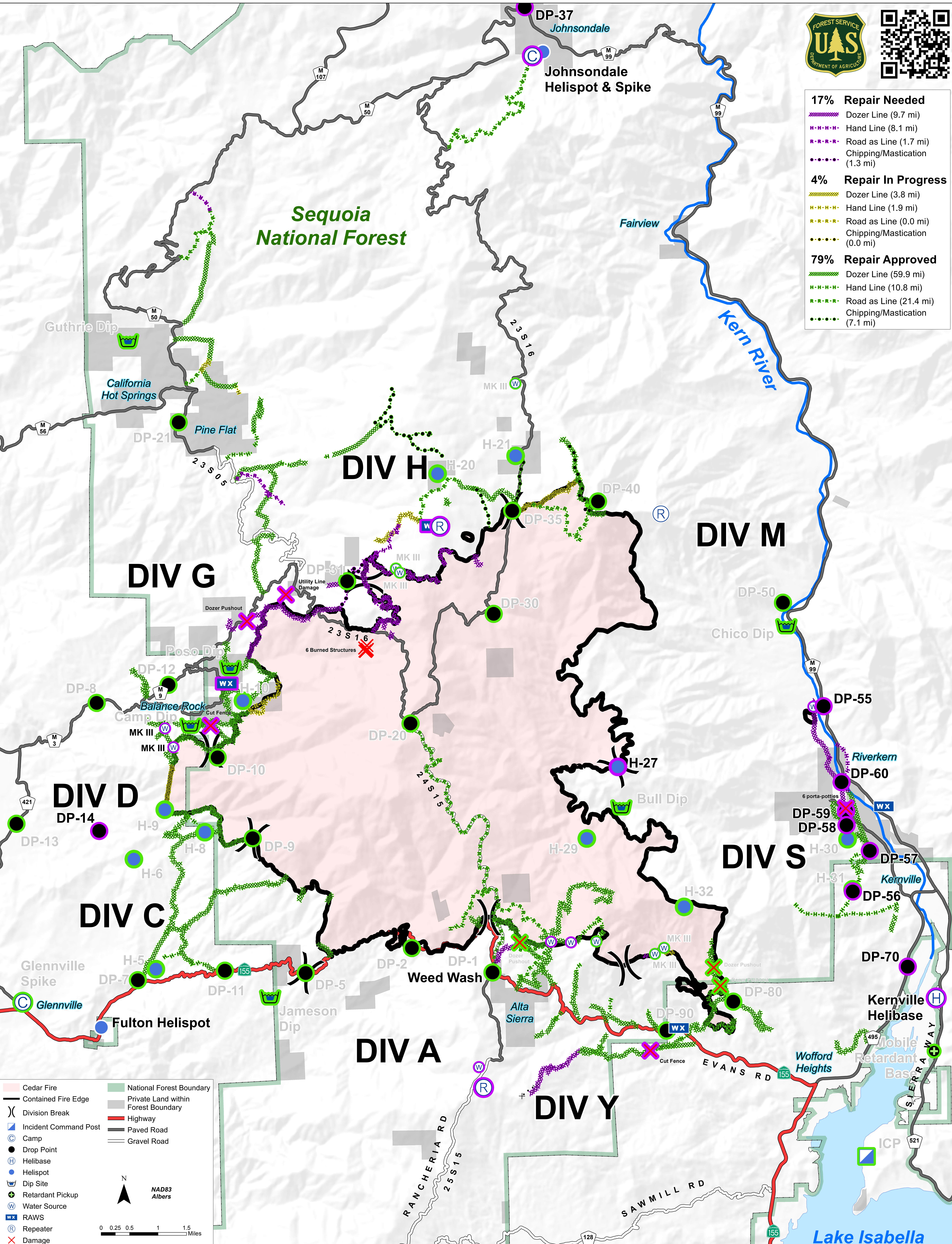


<b>17% Repair Needed</b>
Dozer Line (9.7 mi)
Hand Line (8.1 mi)
Road as Line (1.7 mi)
Chipping/Mastication (1.3 mi)
<b>4% Repair In Progress</b>
Dozer Line (3.8 mi)
Hand Line (1.9 mi)
Road as Line (0.0 mi)
Chipping/Mastication (0.0 mi)
<b>79% Repair Approved</b>
Dozer Line (59.9 mi)
Hand Line (10.8 mi)
Road as Line (21.4 mi)
Chipping/Mastication (7.1 mi)



	Cedar Fire		National Forest Boundary
	Contained Fire Edge		Private Land within Forest Boundary
	Division Break		Highway
	Incident Command Post		Paved Road
	Camp		Gravel Road
	Drop Point		
	Helibase		
	Helispot		
	Dip Site		
	Retardant Pickup		
	Water Source		
	RAWS		
	Repeater		
	Damage		

NAD83  
Albers

0 0.25 0.5 1 1.5 Miles