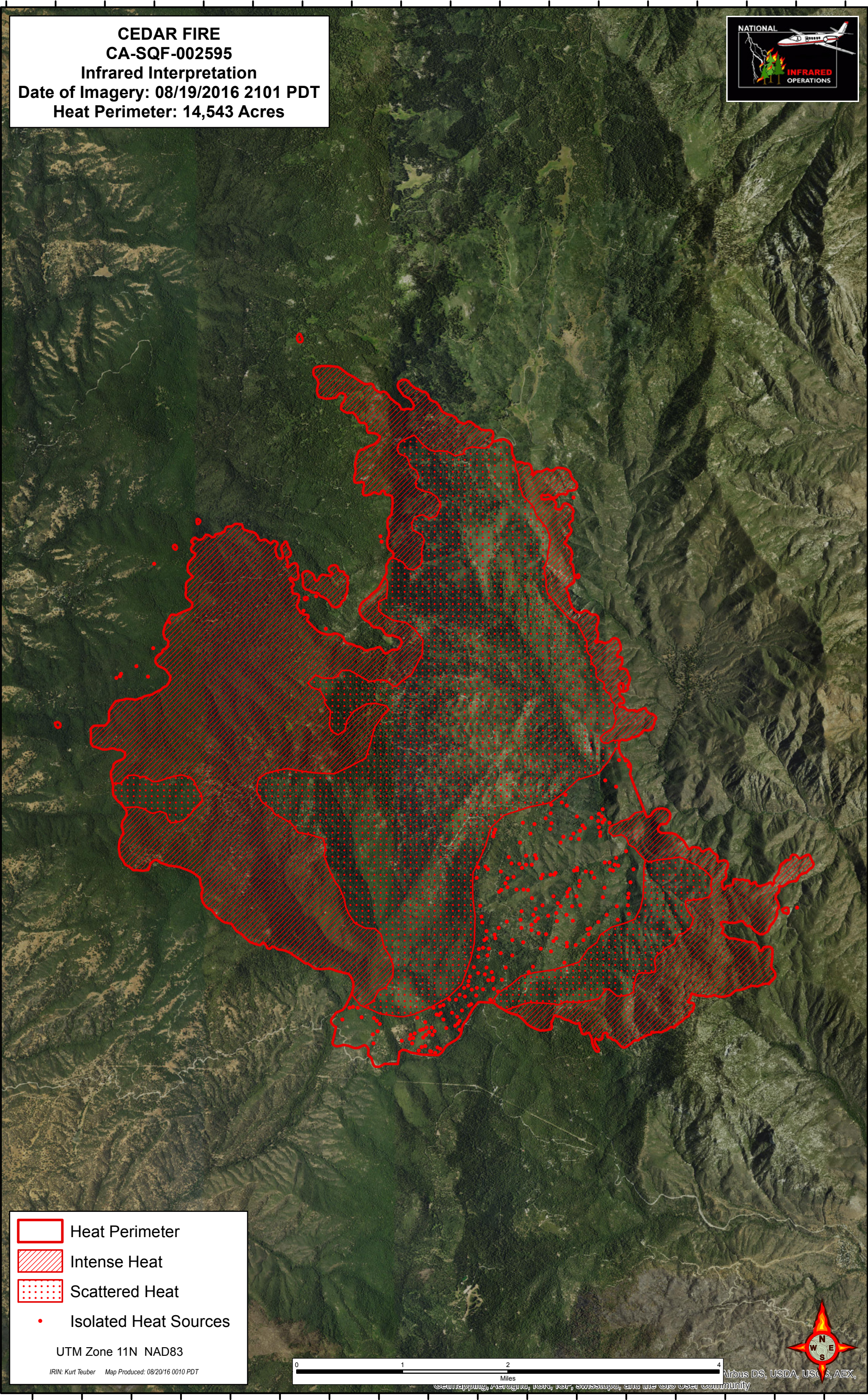

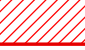




118°38.5'W 118°38'W 118°37.5'W 118°37'W 118°36.5'W 118°36'W 118°35.5'W 118°35'W 118°34.5'W 118°34'W 118°33.5'W 118°33'W 118°32.5'W 118°32'W 118°31.5'W 118°31'W 118°30.5'W 118°30'W

35°53'N  
35°52.5'N  
35°52'N  
35°51.5'N  
35°51'N  
35°50.5'N  
35°50'N  
35°49.5'N  
35°49'N  
35°48.5'N  
35°48'N  
35°47.5'N  
35°47'N  
35°46.5'N  
35°46'N  
35°45.5'N  
35°45'N  
35°44.5'N  
35°44'N  
35°43.5'N  
35°43'N  
35°42.5'N  
35°42'N

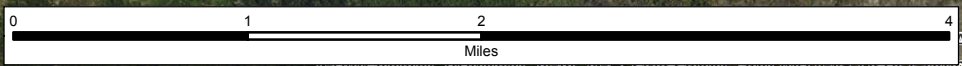
**CEDAR FIRE**  
**CA-SQF-002595**  
**Infrared Interpretation**  
**Date of Imagery: 08/19/2016 2101 PDT**  
**Heat Perimeter: 14,543 Acres**



-  Heat Perimeter
-  Intense Heat
-  Scattered Heat
-  Isolated Heat Sources

UTM Zone 11N NAD83

IRIN: Kurt Teuber Map Produced: 08/20/16 0010 PDT



118°38'W 118°37.5'W 118°37'W 118°36.5'W 118°36'W 118°35.5'W 118°35'W 118°34.5'W 118°34'W 118°33.5'W 118°33'W 118°32.5'W 118°32'W 118°31.5'W 118°31'W 118°30.5'W 118°30'W

Scanning, Aerial, IIR, IIR, Swiss, and the GIS User Community  
Airbus DS, USDA, USGS, AEX,