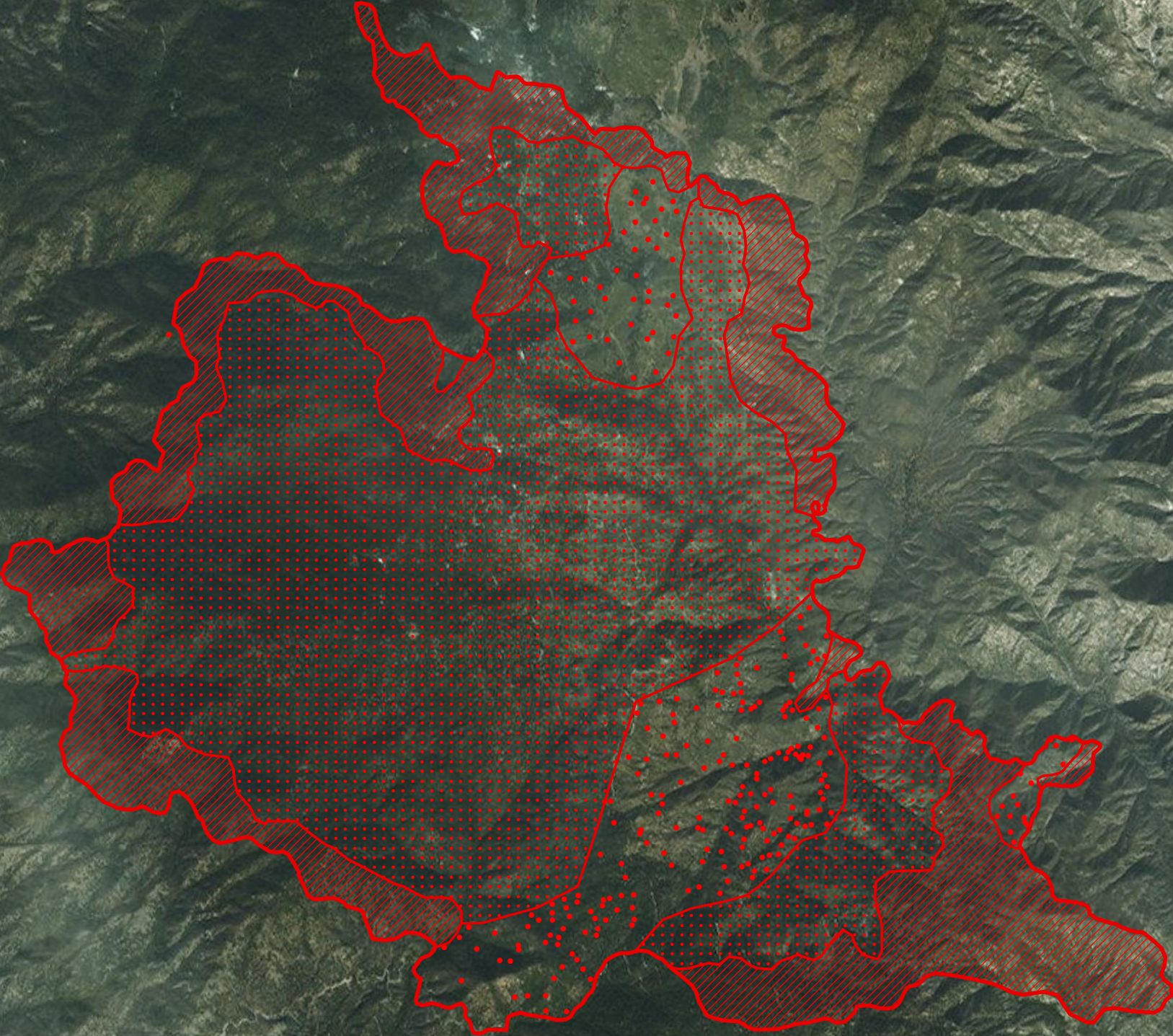



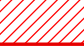


118°39'W 118°38.5'W 118°38'W 118°37.5'W 118°37'W 118°36.5'W 118°36'W 118°35.5'W 118°35'W 118°34.5'W 118°34'W 118°33.5'W 118°33'W 118°32.5'W 118°32'W 118°31.5'W 118°31'W 118°30.5'W 118°30'W 118°29.5'W 118°29'W

35°54'N 35°53.5'N 35°53'N 35°52.5'N 35°52'N 35°51.5'N 35°51'N 35°50.5'N 35°50'N 35°49.5'N 35°49'N 35°48.5'N 35°48'N 35°47.5'N 35°47'N 35°46.5'N 35°46'N 35°45.5'N 35°45'N 35°44.5'N 35°44'N 35°43.5'N 35°43'N 35°42.5'N 35°42'N 35°41.5'N 35°41'N

35°54'N 35°53.5'N 35°53'N 35°52.5'N 35°52'N 35°51.5'N 35°51'N 35°50.5'N 35°50'N 35°49.5'N 35°49'N 35°48.5'N 35°48'N 35°47.5'N 35°47'N 35°46.5'N 35°46'N 35°45.5'N 35°45'N 35°44.5'N 35°44'N 35°43.5'N 35°43'N 35°42.5'N 35°42'N 35°41.5'N 35°41'N

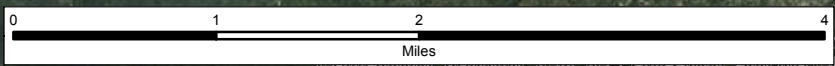
CEDAR FIRE
CA-SQF-002595
Infrared Interpretation
Date of Imagery: 08/21/2016 0203 PDT
Heat Perimeter: 17,986 Acres



 Heat Perimeter
 Intense Heat
 Scattered Heat
 Isolated Heat Sources

UTM Zone 11N NAD83

IRIN: Kurt Teuber Map Produced: 08/21/16 0400 PDT



...ites, CNES/Airbus DS, USDA, USGS, AEX, ... User Community

118°38.5'W 118°38'W 118°37.5'W 118°37'W 118°36.5'W 118°36'W 118°35.5'W 118°35'W 118°34.5'W 118°34'W 118°33.5'W 118°33'W 118°32.5'W 118°32'W 118°31.5'W 118°31'W 118°30.5'W 118°30'W 118°29.5'W 118°29'W