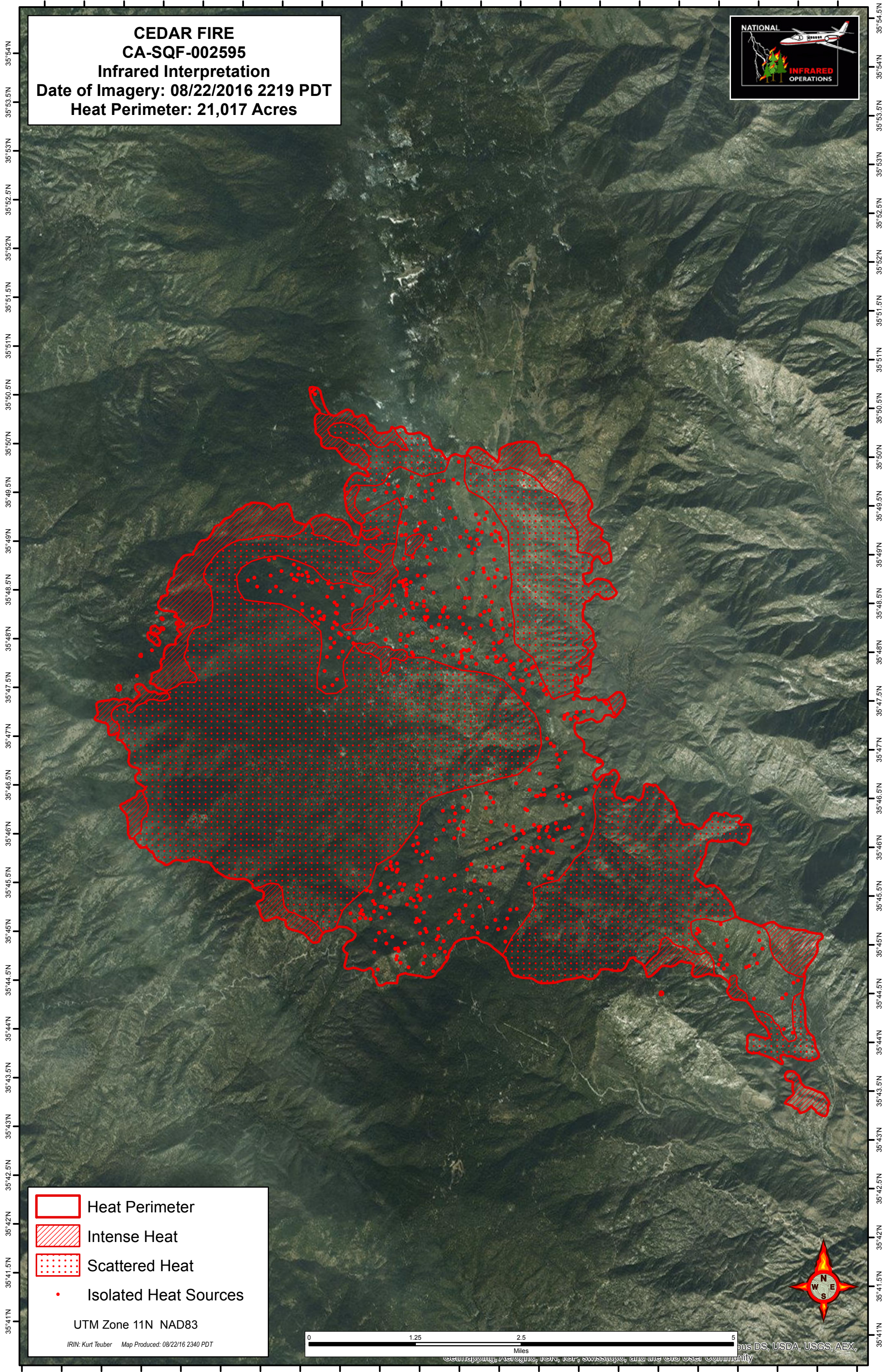






118°39'W 118°38.5'W 118°38'W 118°37.5'W 118°37'W 118°36.5'W 118°36'W 118°35.5'W 118°35'W 118°34.5'W 118°34'W 118°33.5'W 118°33'W 118°32.5'W 118°32'W 118°31.5'W 118°31'W 118°30.5'W 118°30'W 118°29.5'W 118°29'W

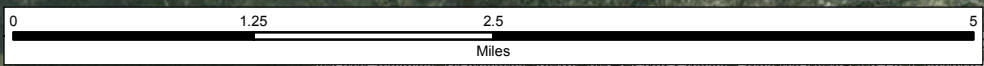
CEDAR FIRE
CA-SQF-002595
Infrared Interpretation
Date of Imagery: 08/22/2016 2219 PDT
Heat Perimeter: 21,017 Acres



-  Heat Perimeter
-  Intense Heat
-  Scattered Heat
-  Isolated Heat Sources

UTM Zone 11N NAD83

IRIN: Kurt Teuber Map Produced: 08/22/16 2340 PDT



118°39'W 118°38.5'W 118°38'W 118°37.5'W 118°37'W 118°36.5'W 118°36'W 118°35.5'W 118°35'W 118°34.5'W 118°34'W 118°33.5'W 118°33'W 118°32.5'W 118°32'W 118°31.5'W 118°31'W 118°30.5'W 118°30'W 118°29.5'W 118°29'W 118°28.5'W

© 2016 by the National Infrared Operations, a division of the National Fire Plan, managed by the Department of the Interior, Bureau of Land Management, in cooperation with the Department of Defense, USGS, AEX, and the GIS User Community