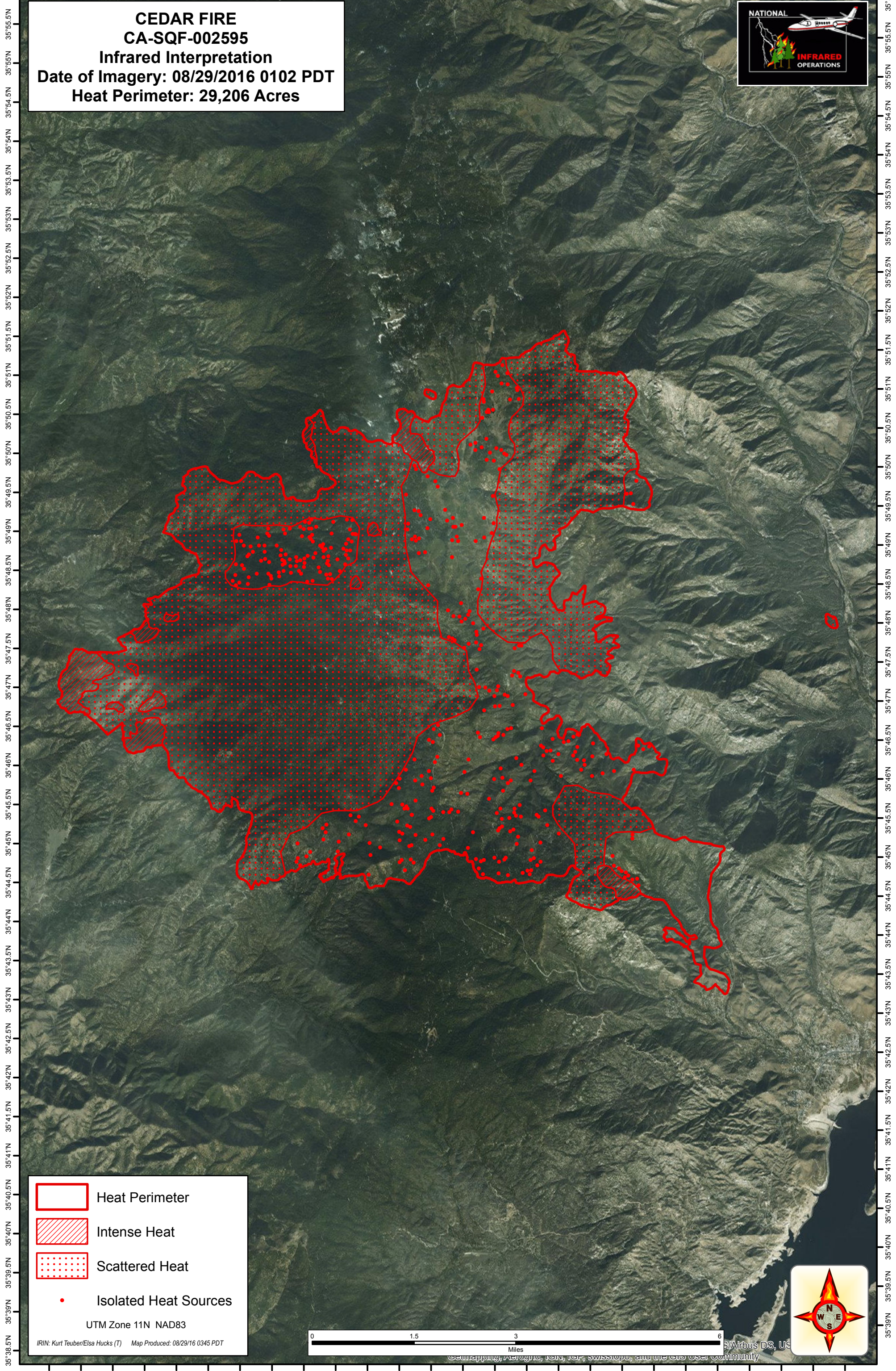






118°40'W 118°39'W 118°38'W 118°37'W 118°36'W 118°35'W 118°34'W 118°33'W 118°32'W 118°31'W 118°30'W 118°29'W 118°28'W 118°27'W

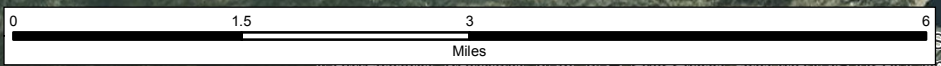
**CEDAR FIRE**  
**CA-SQF-002595**  
**Infrared Interpretation**  
**Date of Imagery: 08/29/2016 0102 PDT**  
**Heat Perimeter: 29,206 Acres**



-  Heat Perimeter
-  Intense Heat
-  Scattered Heat
-  Isolated Heat Sources

UTM Zone 11N NAD83

IRIN: Kurt Teuber/Elsa Hucks (T) Map Produced: 08/29/16 0345 PDT



118°39'W 118°38'W 118°37'W 118°36'W 118°35'W 118°34'W 118°33'W 118°32'W 118°31'W 118°30'W 118°29'W 118°28'W 118°27'W

©/Airbus DS, US

Scanning, Aerial, IIR, IIR, SWS, and the US Community