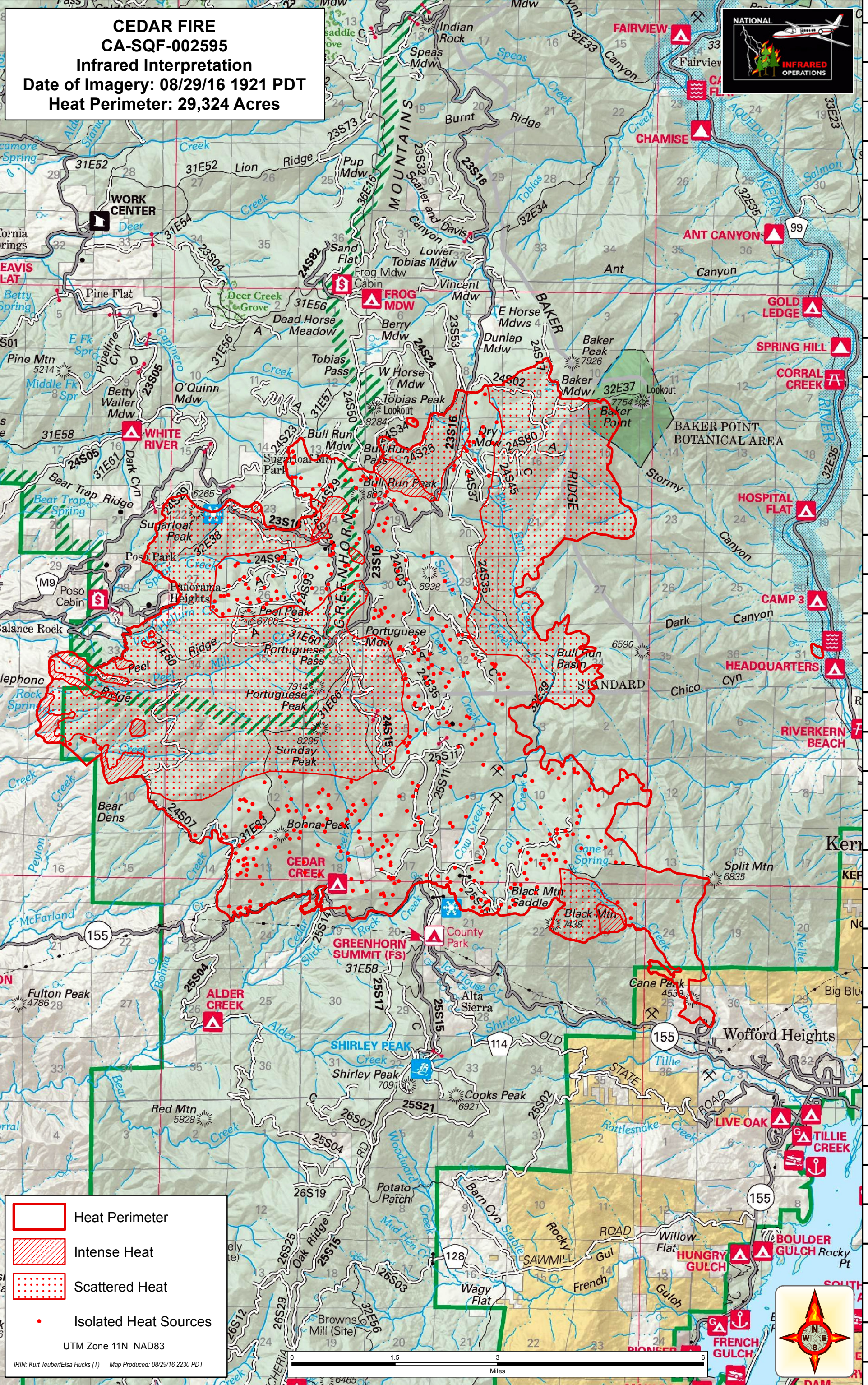


118°40'W 118°39'W 118°38'W 118°37'W 118°36'W 118°35'W 118°34'W 118°33'W 118°32'W 118°31'W 118°30'W 118°29'W 118°28'W 118°27'W

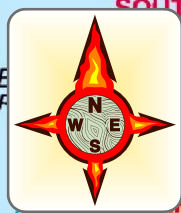


**CEDAR FIRE**  
**CA-SQF-002595**  
**Infrared Interpretation**  
**Date of Imagery: 08/29/16 1921 PDT**  
**Heat Perimeter: 29,324 Acres**



- Heat Perimeter
- Intense Heat
- Scattered Heat
- Isolated Heat Sources

UTM Zone 11N NAD83  
IRIN: Kurt Teuber/Elsa Hucks (T) Map Produced: 08/29/16 2230 PDT



118°39'W 118°38'W 118°37'W 118°36'W 118°35'W 118°34'W 118°33'W 118°32'W 118°31'W 118°30'W 118°29'W 118°28'W 118°27'W