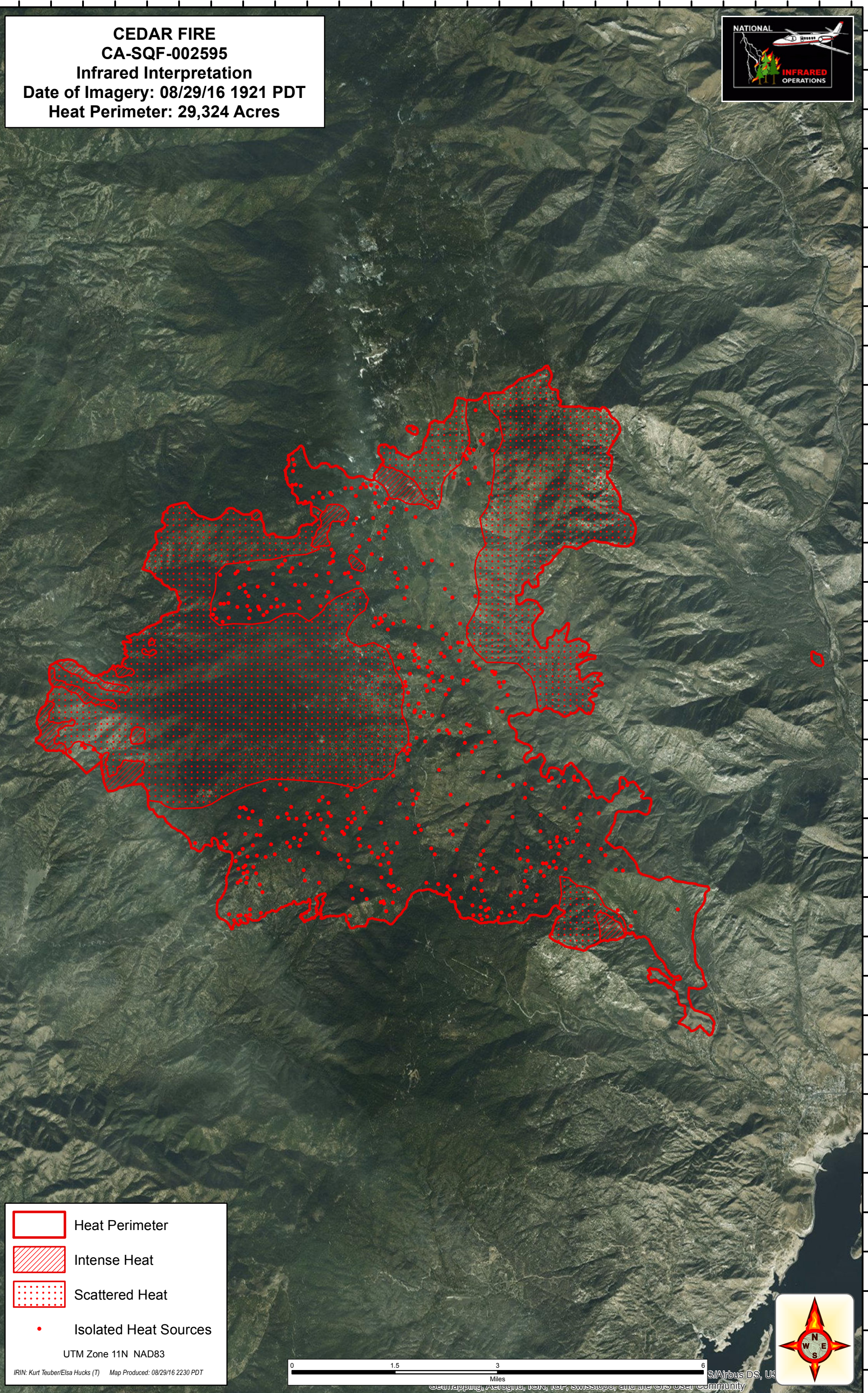






118°40'W 118°39'W 118°38'W 118°37'W 118°36'W 118°35'W 118°34'W 118°33'W 118°32'W 118°31'W 118°30'W 118°29'W 118°28'W 118°27'W



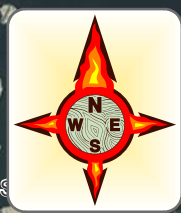
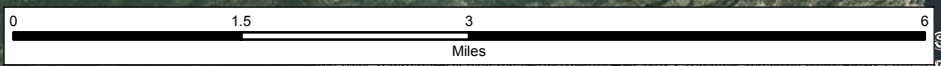
CEDAR FIRE
CA-SQF-002595
Infrared Interpretation
Date of Imagery: 08/29/16 1921 PDT
Heat Perimeter: 29,324 Acres



-  Heat Perimeter
-  Intense Heat
-  Scattered Heat
-  Isolated Heat Sources

UTM Zone 11N NAD83

IRIN: Kurt Teuber/Elsa Hucks (T) Map Produced: 08/29/16 2230 PDT



118°39'W 118°38'W 118°37'W 118°36'W 118°35'W 118°34'W 118°33'W 118°32'W 118°31'W 118°30'W 118°29'W 118°28'W 118°27'W

35°56'N 35°55.5'N 35°55'N 35°54.5'N 35°54'N 35°53.5'N 35°53'N 35°52.5'N 35°52'N 35°51.5'N 35°51'N 35°50.5'N 35°50'N 35°49.5'N 35°49'N 35°48.5'N 35°48'N 35°47.5'N 35°47'N 35°46.5'N 35°46'N 35°45.5'N 35°45'N 35°44.5'N 35°44'N 35°43.5'N 35°43'N 35°42.5'N 35°42'N 35°41.5'N 35°41'N 35°40.5'N 35°40'N 35°39.5'N 35°39'N

S/Airbus DS, UK
Scanning, Aerial, IR, Ter, SwissTopo, and the GIS User Community