

118°35'W

118°34'W

Slate Fire

Heat Acres: 122

CA-SQF-003261

Infrared Interpretation

Imagery Date:

2016/10/24 2332 Hrs



1:10,000

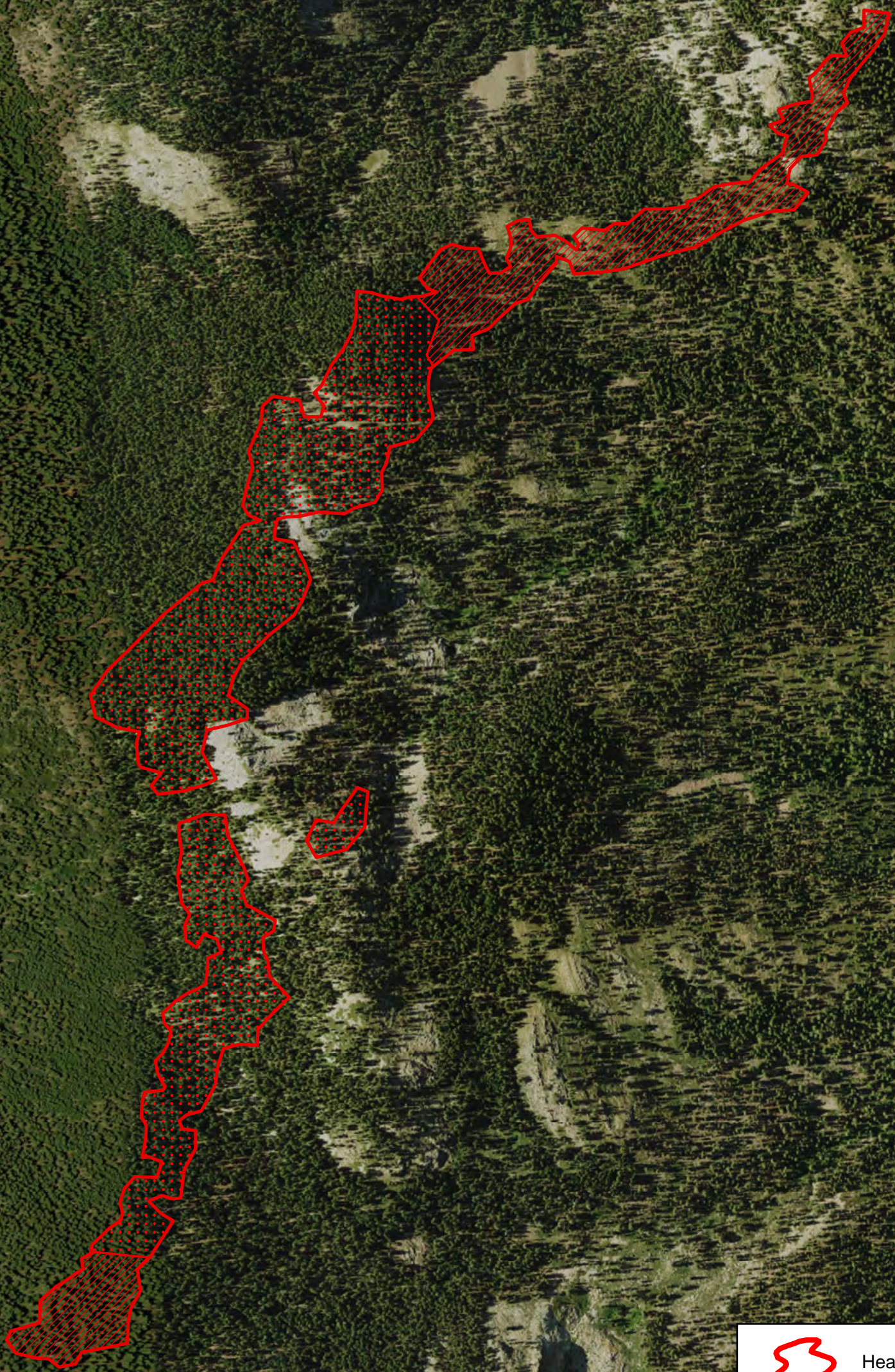






36°6'N

36°5'N

36°6'N

36°5'N



-  Heat Perimeter
 -  Intense Heat Areas
 -  Scattered Heat Areas
 -  Isolated Heat Sources
- NAD 1983 UTM Zone 10N

IRIN: K Felker
Map produced:
10/25/2016 1338 hrs

0 500 1,000 2,000

Getmapping, Aerogrid, IGN, IGP, swisstopo, and the GIS User Community

118°35'W

118°34'W