


120°38'0"W 120°37'0"W 120°36'0"W 120°35'0"W 120°34'0"W 120°33'0"W 120°32'0"W 120°31'0"W 120°30'0"W





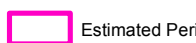
34°38'0"N
34°37'0"N
34°36'0"N
34°35'0"N
34°34'0"N

34°38'0"N
34°37'0"N
34°36'0"N
34°35'0"N
34°34'0"N

NATIONAL

INFRARED OPERATIONS


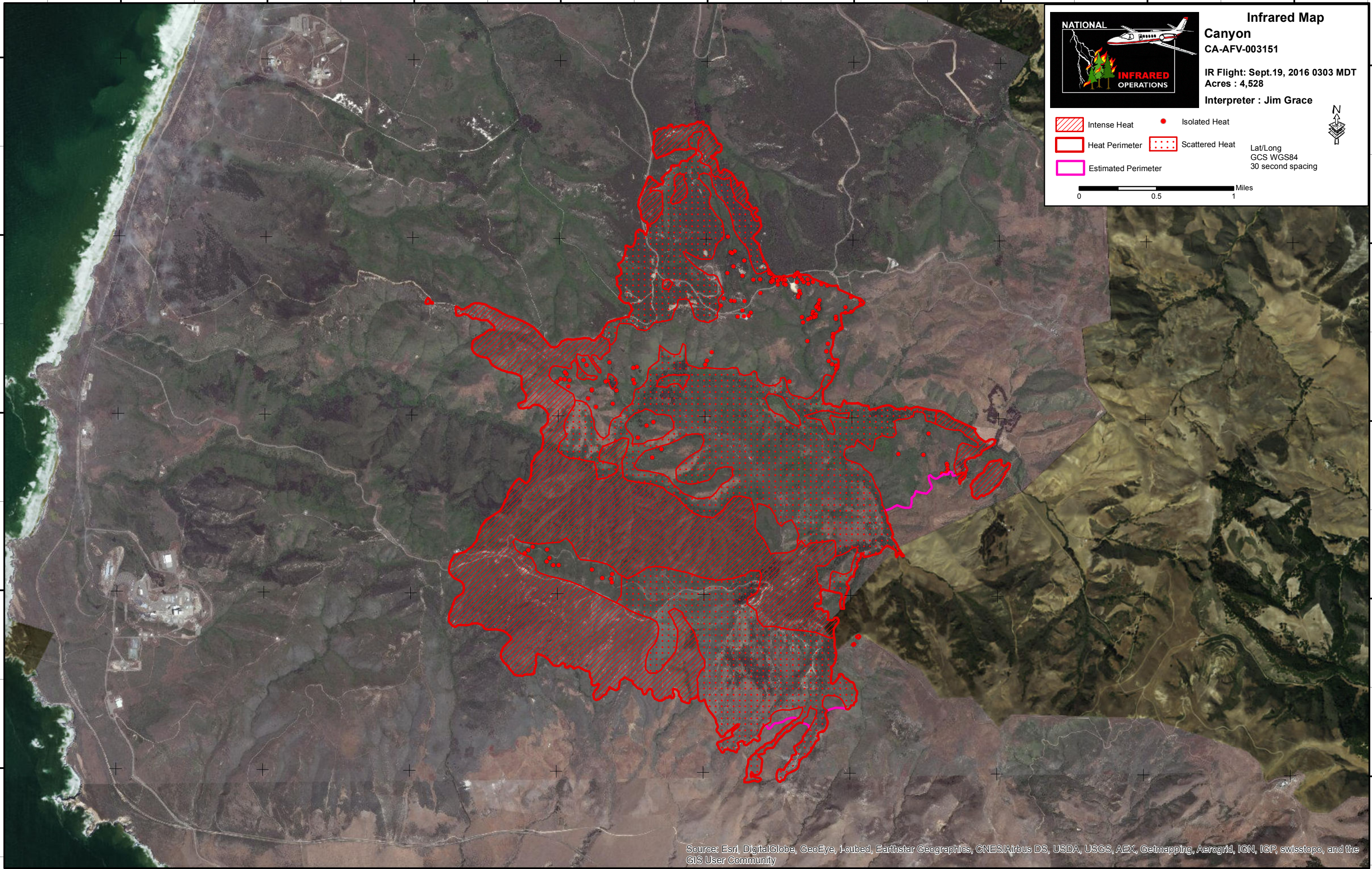
Infrared Map
Canyon
 CA-AFV-003151

IR Flight: Sept. 19, 2016 0303 MDT
 Acres : 4,528
 Interpreter : Jim Grace

 Intense Heat  Isolated Heat
 Heat Perimeter  Scattered Heat
 Estimated Perimeter

Lat/Long
 GCS WGS84
 30 second spacing

0 0.5 1 Miles

Source: Esri, DigitalGlobe, GeoEye, i-cubed, Earthstar Geographics, CNES/Airbus DS, USDA, USGS, AEX, Getmapping, Aerogrid, IGN, IGP, swisstopo, and the GIS User Community

120°38'0"W 120°37'0"W 120°36'0"W 120°35'0"W 120°34'0"W 120°33'0"W 120°32'0"W 120°31'0"W 120°30'0"W