

120°39'0"W 120°38'0"W 120°37'0"W 120°36'0"W 120°35'0"W 120°34'0"W 120°33'0"W 120°32'0"W 120°31'0"W 120°30'0"W 120°29'0"W

34°38'0"N

34°37'0"N

34°36'0"N

34°35'0"N

34°34'0"N

34°38'0"N

34°37'0"N


34°36'0"N

34°35'0"N

34°34'0"N

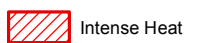



120°39'0"W 120°38'0"W 120°37'0"W 120°36'0"W 120°35'0"W 120°34'0"W 120°33'0"W 120°32'0"W 120°31'0"W 120°30'0"W 120°29'0"W

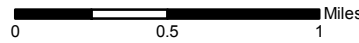
**NATIONAL INFRARED OPERATIONS**


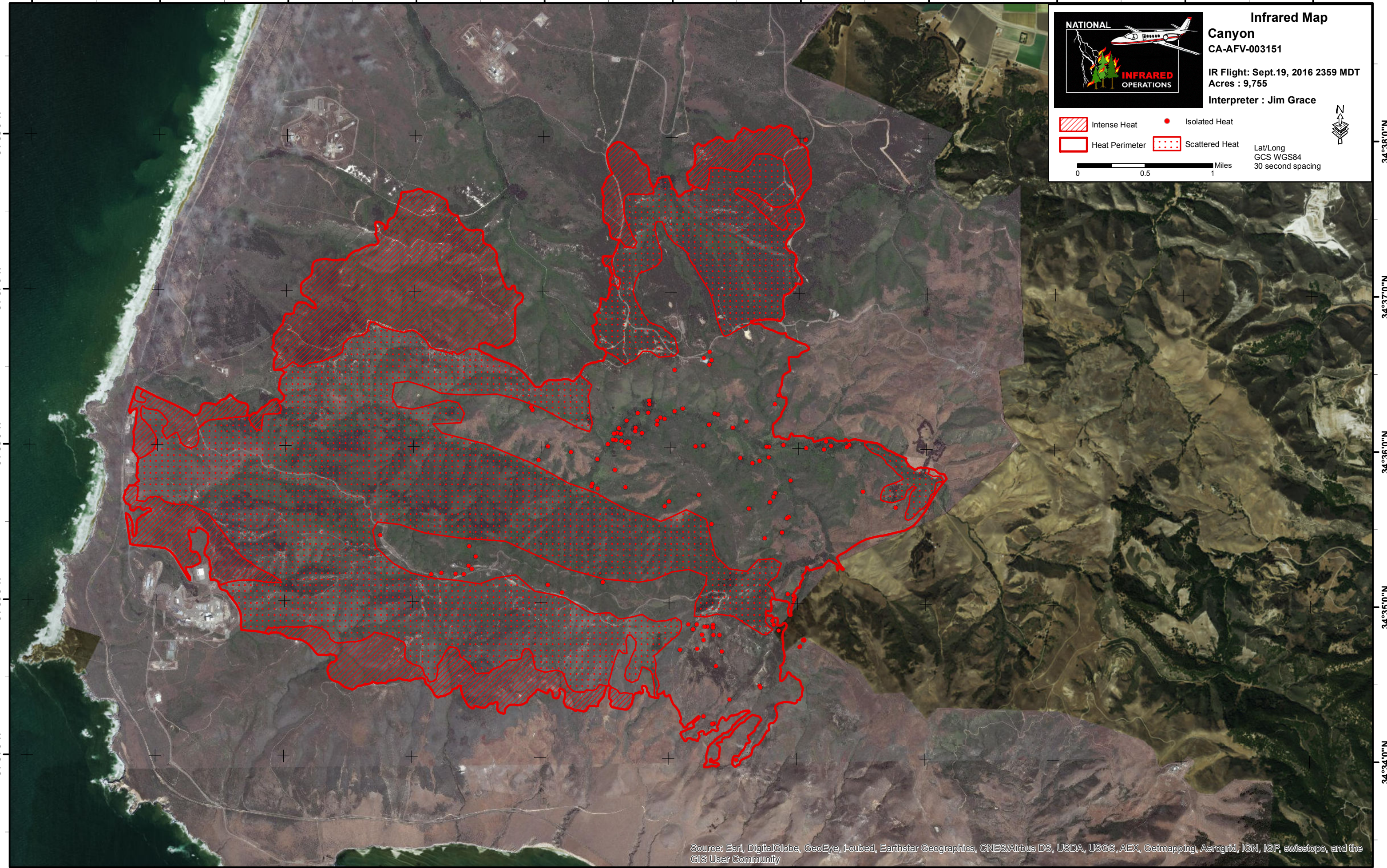


**Infrared Map**  
**Canyon**  
 CA-AFV-003151

IR Flight: Sept.19, 2016 2359 MDT  
 Acres : 9,755  
 Interpreter : Jim Grace

 Intense Heat      Isolated Heat  
 Heat Perimeter      Scattered Heat

 Miles  
 Lat/Long  
 GCS WGS84  
 30 second spacing

Source: Esri, DigitalGlobe, GeoEye, i-cubed, Earthstar Geographics, CNES/Airbus DS, USDA, USGS, AEX, Getmapping, Aerogrid, IGN, IGP, swisstopo, and the GIS User Community