

120°39'0"W 120°38'0"W 120°37'0"W 120°36'0"W 120°35'0"W 120°34'0"W 120°33'0"W 120°32'0"W 120°31'0"W 120°30'0"W 120°29'0"W

34°38'0"N

34°37'0"N

34°36'0"N

34°35'0"N

34°34'0"N

34°38'0"N

34°37'0"N


34°36'0"N

34°35'0"N

34°34'0"N

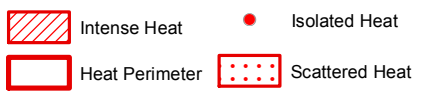
120°39'0"W 120°38'0"W 120°37'0"W 120°36'0"W 120°35'0"W 120°34'0"W 120°33'0"W 120°32'0"W 120°31'0"W 120°30'0"W 120°29'0"W

NATIONAL INFRARED OPERATIONS




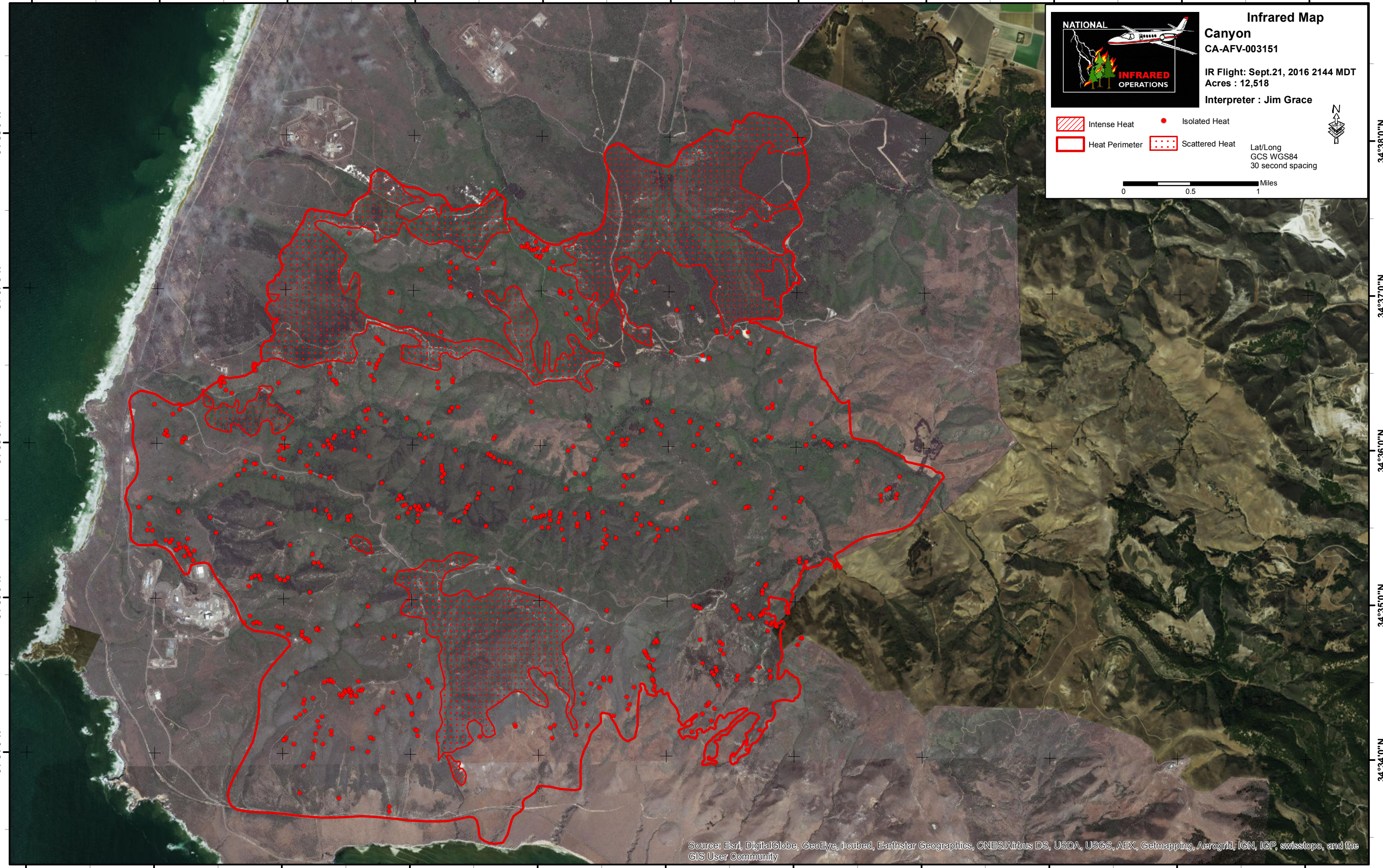
Infrared Map
Canyon
 CA-AFV-003151

IR Flight: Sept.21, 2016 2144 MDT
 Acres : 12,518
 Interpreter : Jim Grace


 Intense Heat Isolated Heat
 Heat Perimeter Scattered Heat

Lat/Long
 GCS WGS84
 30 second spacing

0 0.5 1 Miles

Source: Esri, DigitalGlobe, GeoEye, i-cubed, Earthstar Geographics, CNES/Airbus DS, USDA, USGS, AEX, Getmapping, Aerogrid, IGN, IGP, swisstopo, and the GIS User Community