

116°52'W

116°50'W

116°48'W

34°20'N

34°20'N

34°18'N

34°18'N

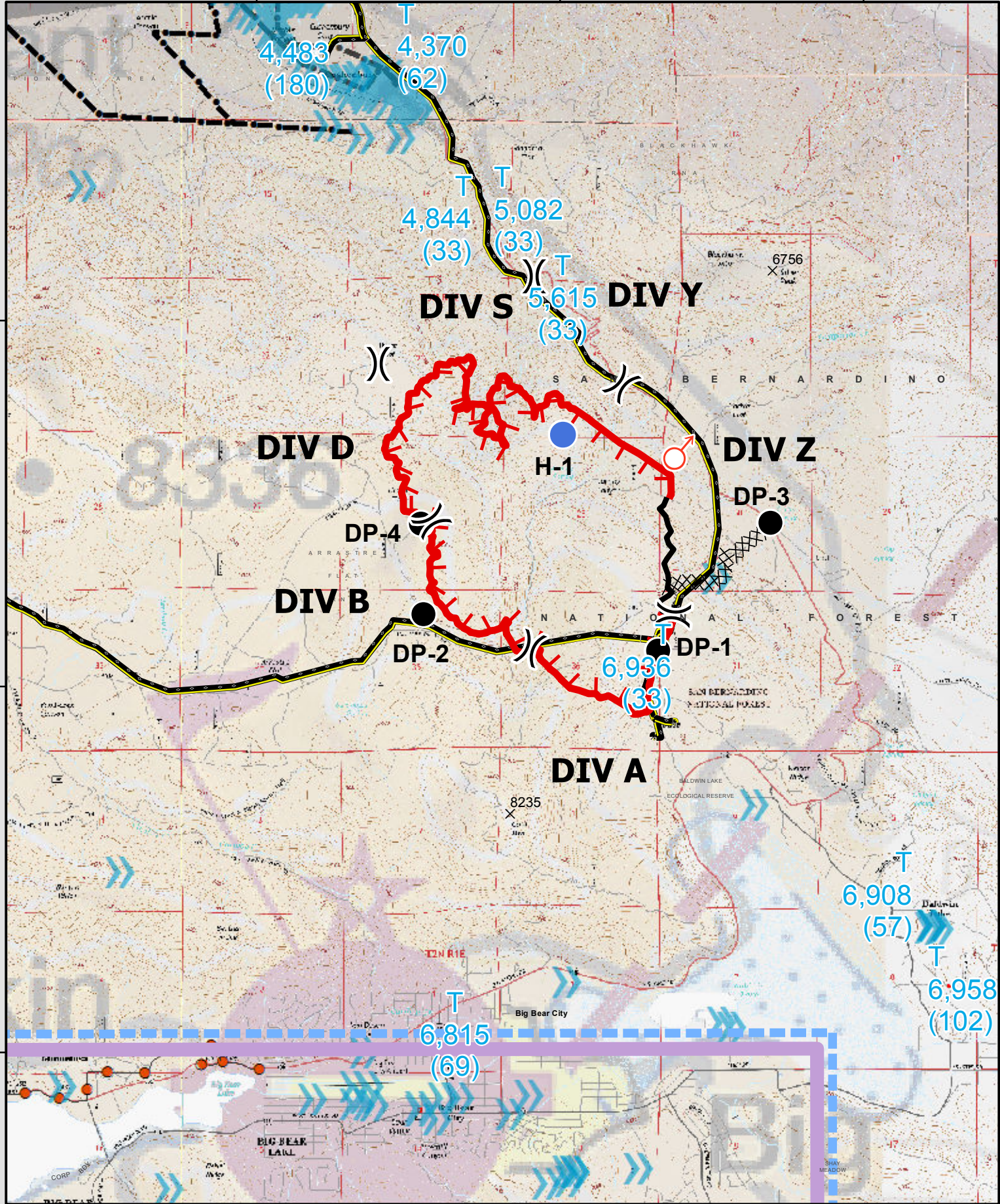
34°16'N

34°16'N

116°52'W

116°50'W

116°48'W



Holcomb
 CA-BDF-009443
AIR OPS
 Jun 22, 2017

 Uncontrolled Fire Edge

 Completed Dozer Line

 Completed Line


 Powerline

 SCE Circuits

 Aerial cable

Division

 Drop Point

 Helispot

 Spot Fire

 Summits

 AviationObstacle

 TFR

LABEL	LAT	LONG
DP-1	116 49.376 W	34 18.208 N
DP-2	116 50.926 W	34 18.403 N
DP-3	116 48.621 W	34 18.904 N
DP-4	116 50.939 W	34 18.896 N
H-1	119 49.98 W	34 19.352 N