

116°52'W

116°50'W

116°48'W

34°20'N

34°20'N

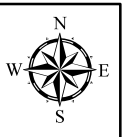
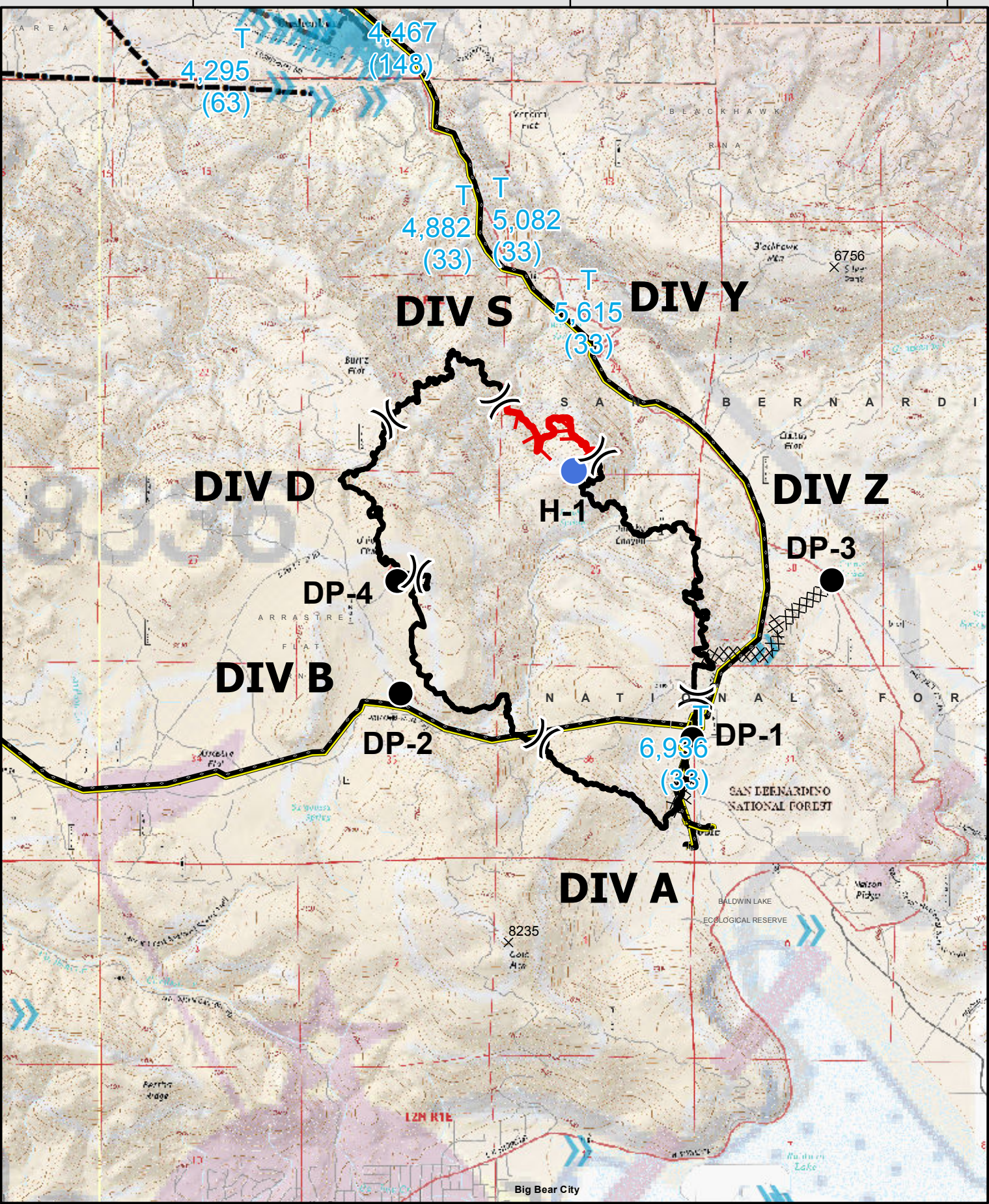
34°18'N

34°18'N

116°52'W

116°50'W

116°48'W




**Holcomb**  
 CA-BDF-009443  
**AIR OPS**  
 Jun 25, 2017  
 NAD83 1:40,000



 Uncontrolled Fire Edge

 Completed Dozer Line

 Completed Line


 Powerline


 SCE Circuits

 Aerial cable

 Division

 Drop Point

 Helispot

 Helibase

 Summits

 AviationObstacle

 TFR

LABEL	LAT	LONG
DP-1	116 49.376 W	34 18.208 N
DP-2	116 50.926 W	34 18.403 N
DP-3	116 48.621 W	34 18.904 N
DP-4	116 50.939 W	34 18.896 N
H-1	116 49.98 W	34 19.352 N
Cargo	116 53.965 W	34 15.975 N