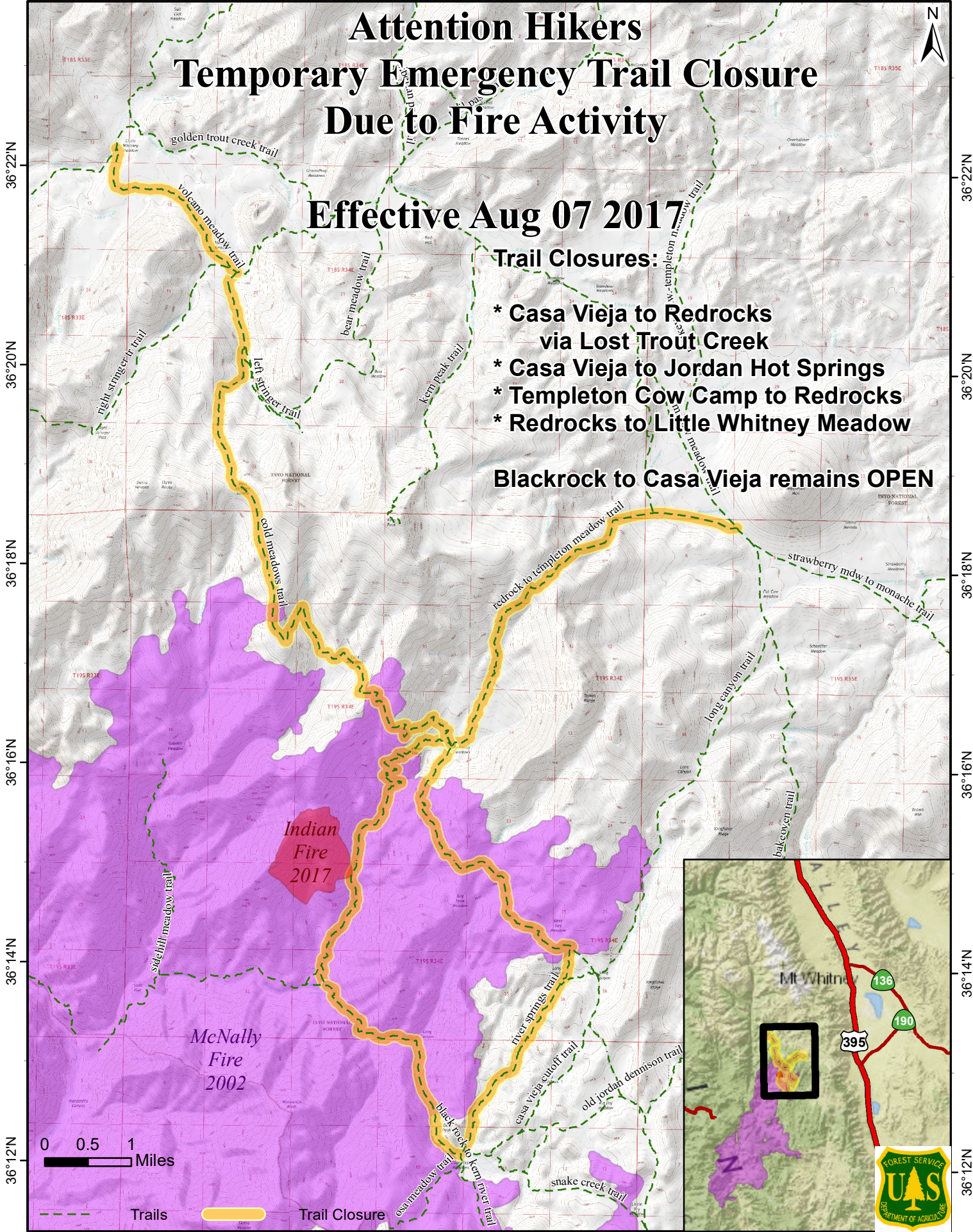


118°20'W 118°18'W 118°16'W 118°14'W 118°12'W



# Attention Hikers

## Temporary Emergency Trail Closure

### Due to Fire Activity

**Effective Aug 07 2017**

#### Trail Closures:

- \* Casa Vieja to Redrocks via Lost Trout Creek
- \* Casa Vieja to Jordan Hot Springs
- \* Templeton Cow Camp to Redrocks
- \* Redrocks to Little Whitney Meadow

**Blackrock to Casa Vieja remains OPEN**

*Indian Fire 2017*

*McNally Fire 2002*

0 0.5 1 Miles

Trails Trail Closure



118°20'W 118°18'W 118°16'W 118°14'W 118°12'W

36°22'N  
36°20'N  
36°18'N  
36°16'N  
36°14'N  
36°12'N

36°22'N  
36°20'N  
36°18'N  
36°16'N  
36°14'N  
36°12'N

