

118°20'W 118°18'W 118°16'W 118°14'W 118°12'W

36°22'N
36°20'N
36°18'N
36°16'N
36°14'N
36°12'N

36°22'N
36°20'N
36°18'N
36°16'N
36°14'N
36°12'N

Attention Hikers

Temporary Emergency Trail Closure

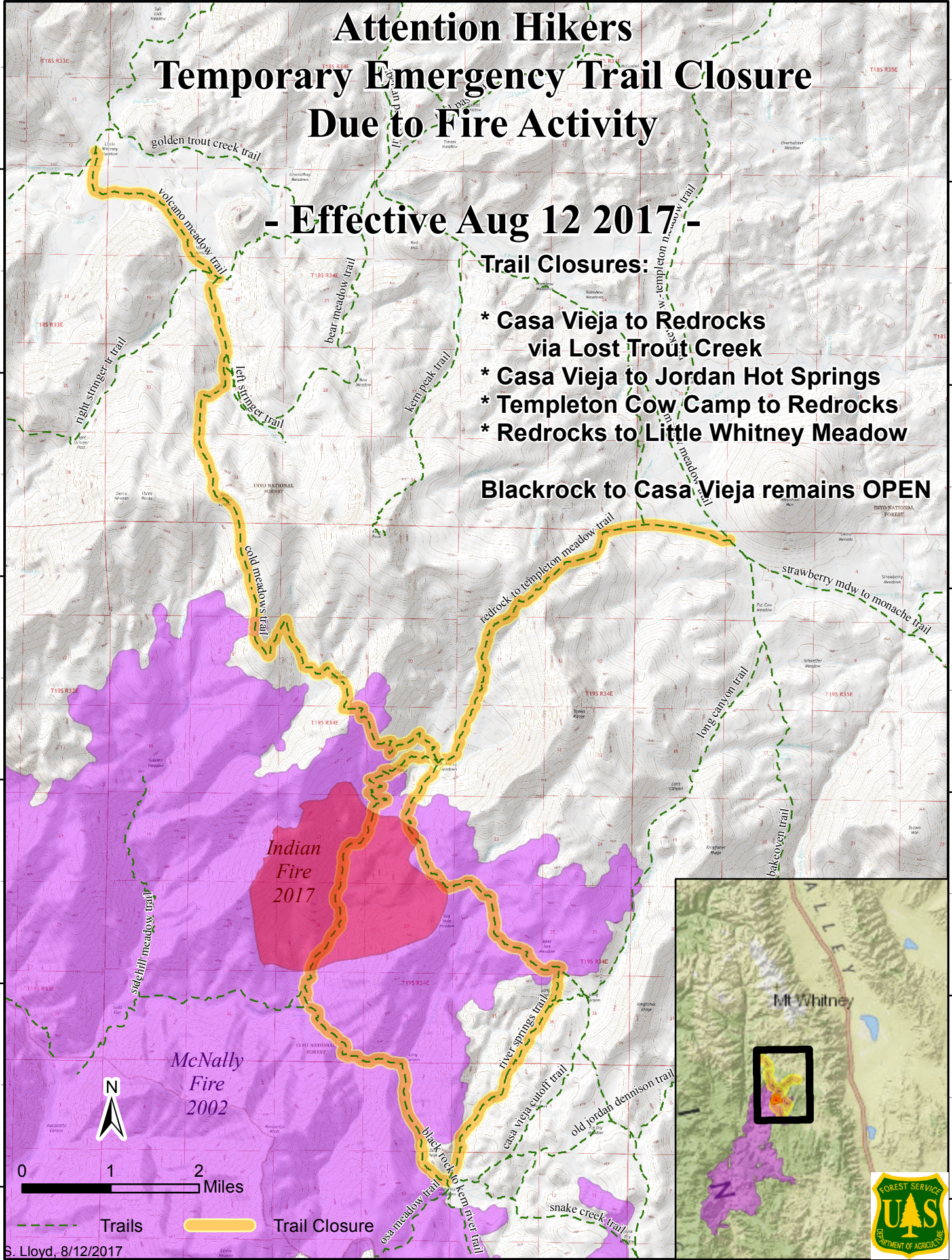
Due to Fire Activity

- Effective Aug 12 2017 -

Trail Closures:

- * Casa Vieja to Redrocks via Lost Trout Creek
- * Casa Vieja to Jordan Hot Springs
- * Templeton Cow Camp to Redrocks
- * Redrocks to Little Whitney Meadow

Blackrock to Casa Vieja remains OPEN



S. Lloyd, 8/12/2017

118°20'W 118°18'W 118°16'W 118°14'W 118°12'W

