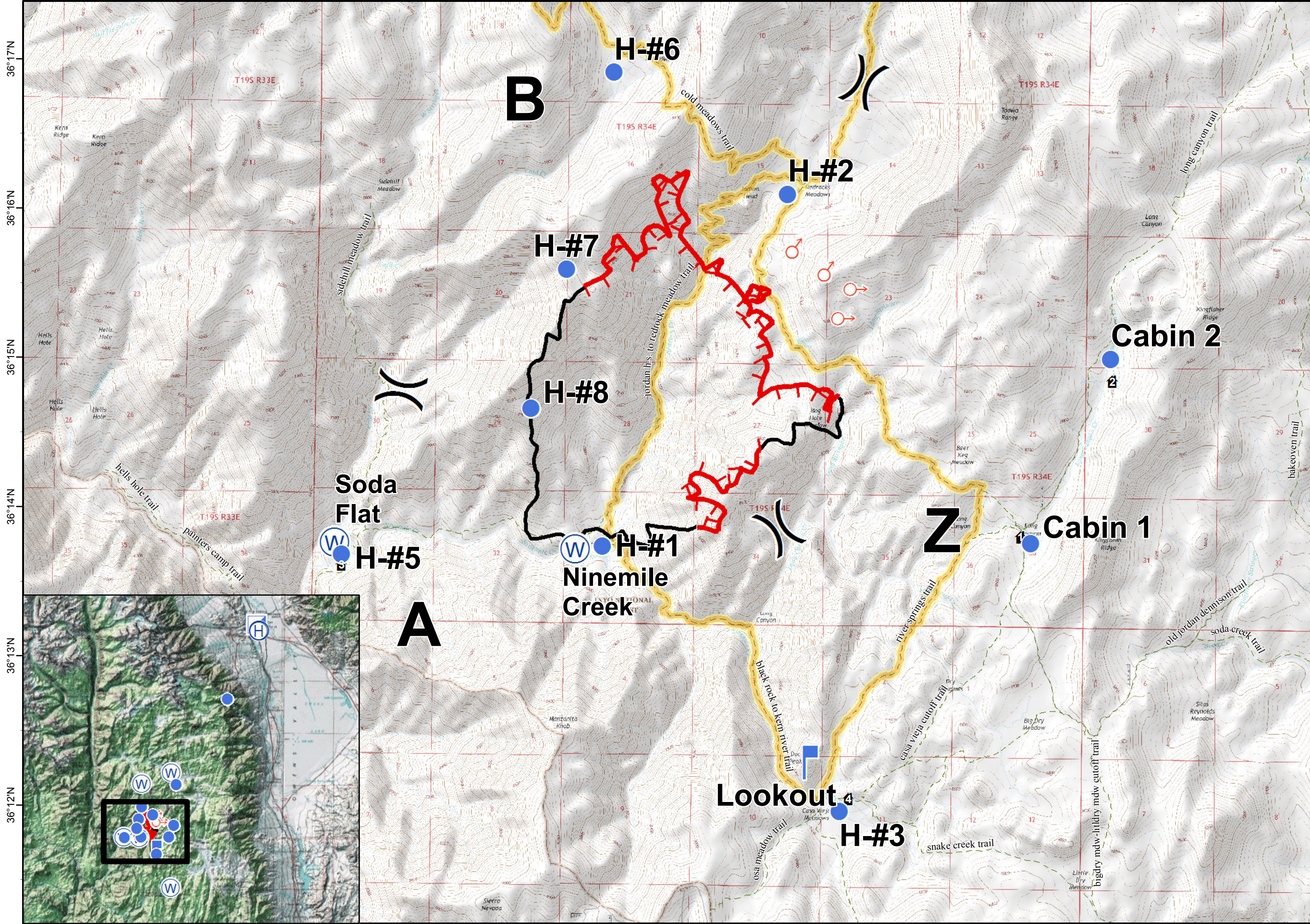


118°23'W 118°22'W 118°21'W 118°20'W 118°19'W 118°18'W 118°17'W 118°16'W 118°15'W 118°14'W 118°13'W

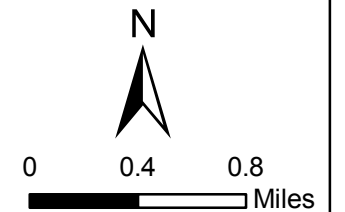


**Indian Fire**  
Operations Map  
CA-INF-001264  
P5K8XS17

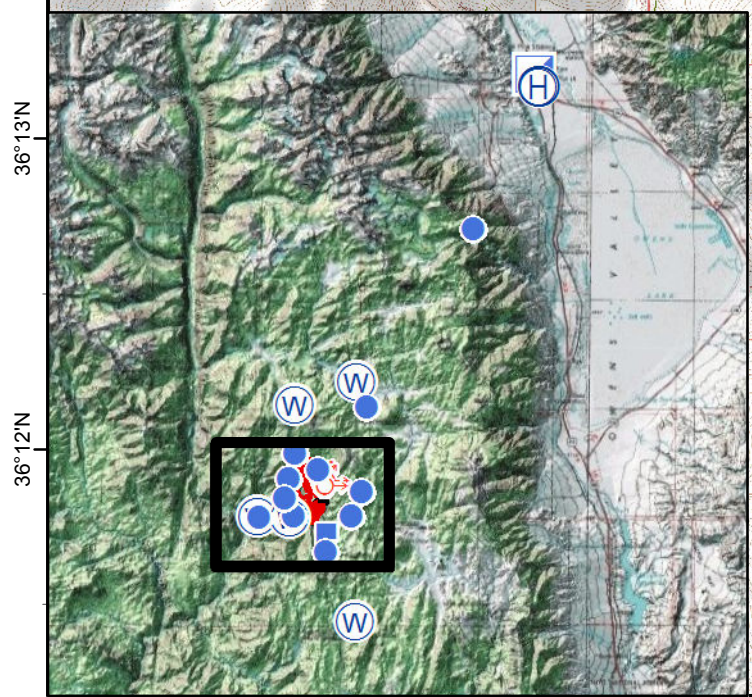
Aug 18 2017 0600 DAY  
Operational Period  
Approx 2,267 acres  
Aug 17 2017 1650

**Legend**

- Structures
- Trails
- Trail Closure
- Division
- Helispot
- Lookout
- Spot Fire
- Water Source
- Uncontrolled Fire Edge
- Completed Line



NAD 1983 UTM Zone 11N  
Projection: Transverse Mercator  
Datum: North American 1983  
S. Lloyd/M.Hollowell, 8/17/2017



118°22'W 118°21'W 118°20'W 118°19'W 118°18'W 118°17'W 118°16'W 118°15'W 118°14'W 118°13'W