

118°23'W 118°22'W 118°21'W 118°20'W 118°19'W 118°18'W 118°17'W 118°16'W 118°15'W 118°14'W 118°13'W

36°17'N

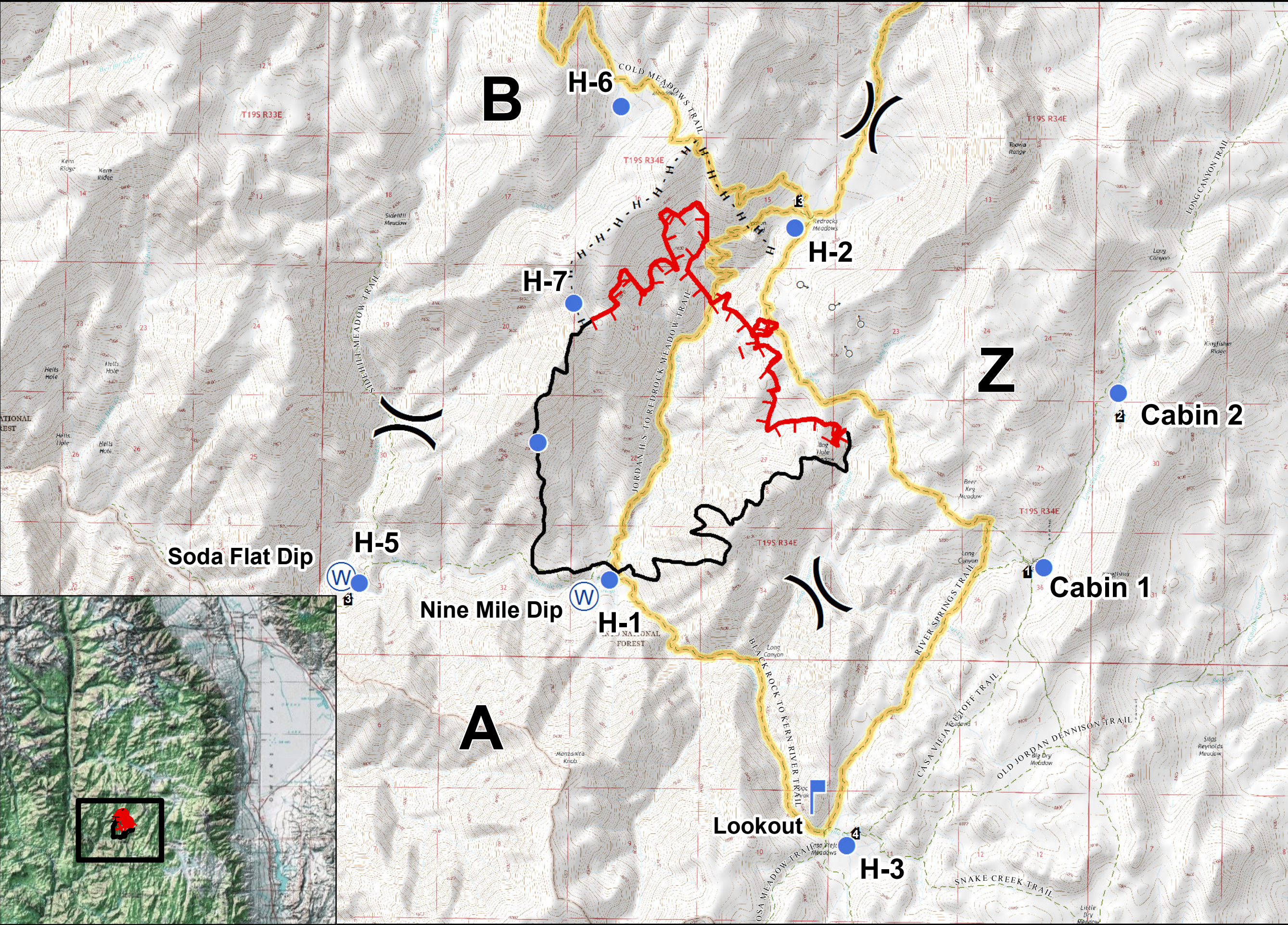
36°16'N

36°15'N

36°14'N

36°13'N

36°12'N

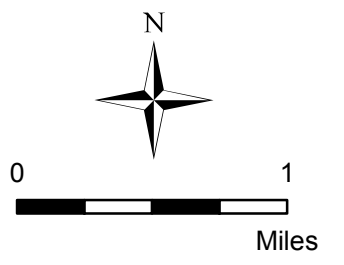


OPS MAP

Indian Fire
CA-INF-001264
P5K8XS17

August 20, 2017
Approx 2,295 acres

- Uncontrolled Fire Edge
- Completed Line
- Division
- Hand Line
- Helispot
- Water Source
- Lined Spot Fire
- Structures
- Lookout
- Trails
- Trail Closure



NAD 1983 UTM Zone 11N
Projection: Transverse Mercator
Datum: North American 1983

M.Hollowell, 8/19/2017

