





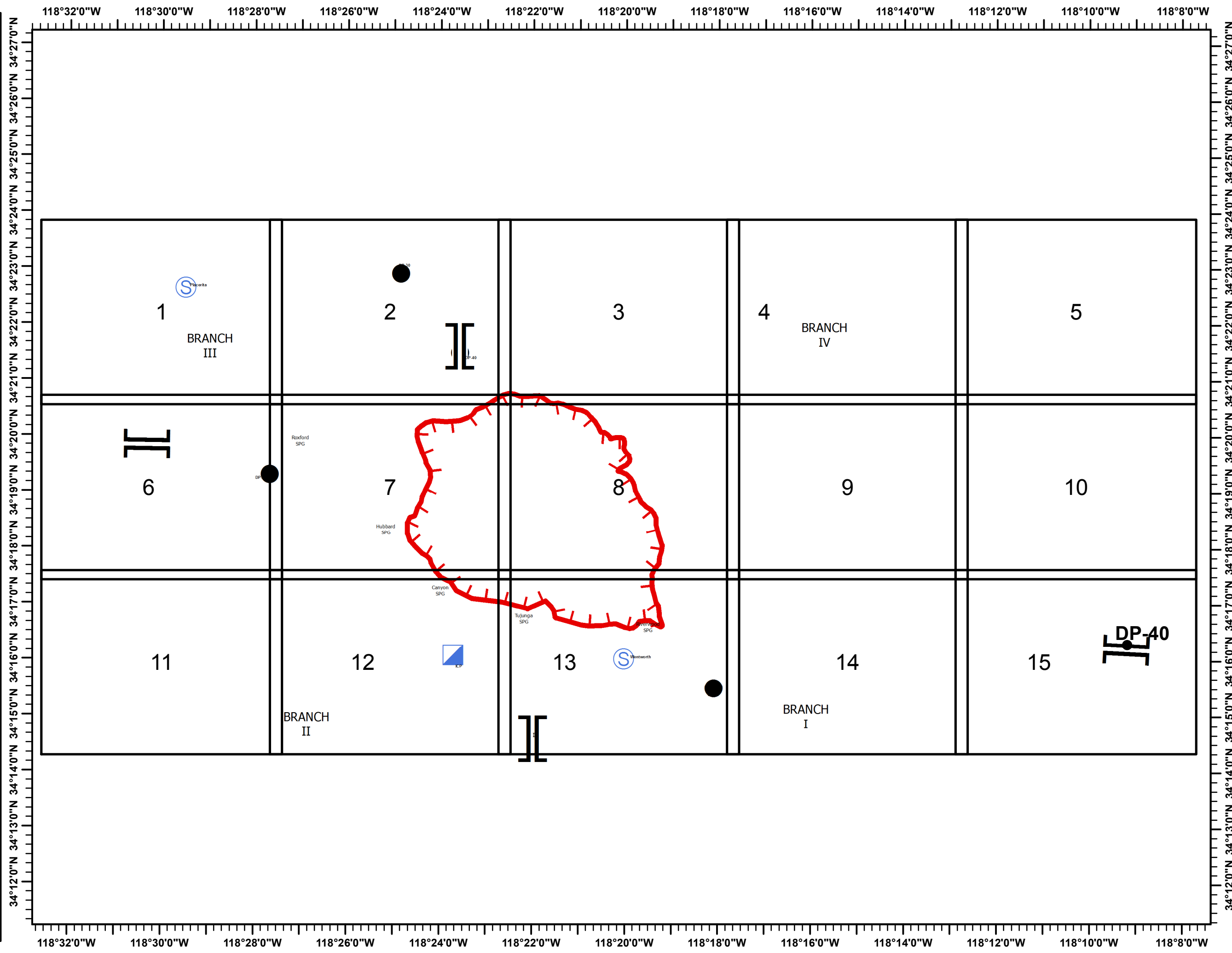


**CREEK FIRE**  
**Incident Action Plan**  
**Index Page**  
 CA-LAC-362189  
 Dec 05 2017

-  Branch
-  Drop Point
-  Staging Area
-  Incident Command Post
-  Uncontrolled Fire Edge
-  Index Grid








# CREEK FIRE

## Incident Action Plan Map

CA-LAC-362189

Dec 05 2017

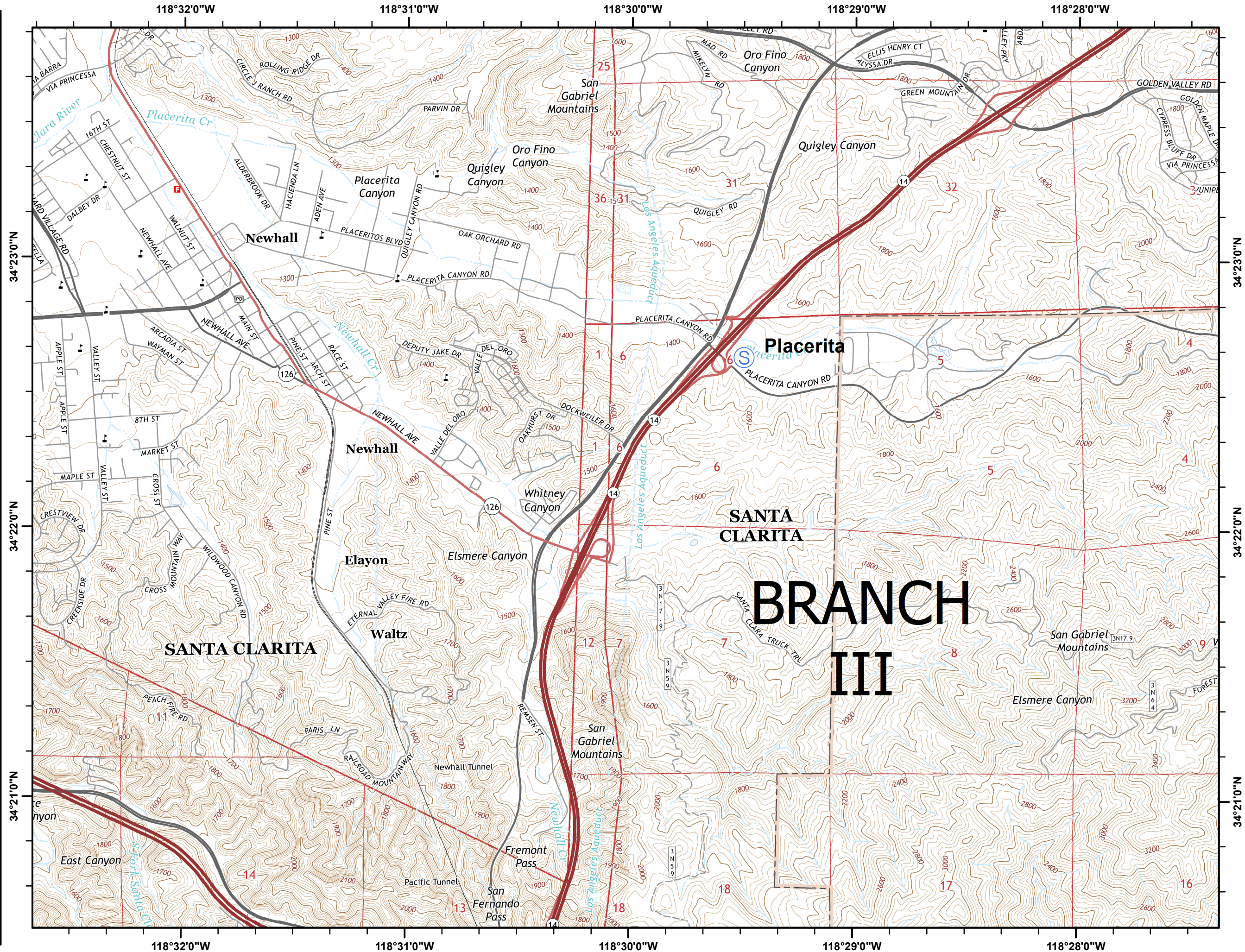
Page 1 of 15

-  Branch
-  Drop Point
-  Staging Area
-  Incident Command Post
-  Uncontrolled Fire Edge



Miles  
0.25 0 0.25 0.5

LACo GISS E. Lamas








# CREEK FIRE

## Incident Action Plan Map

CA-LAC-362189

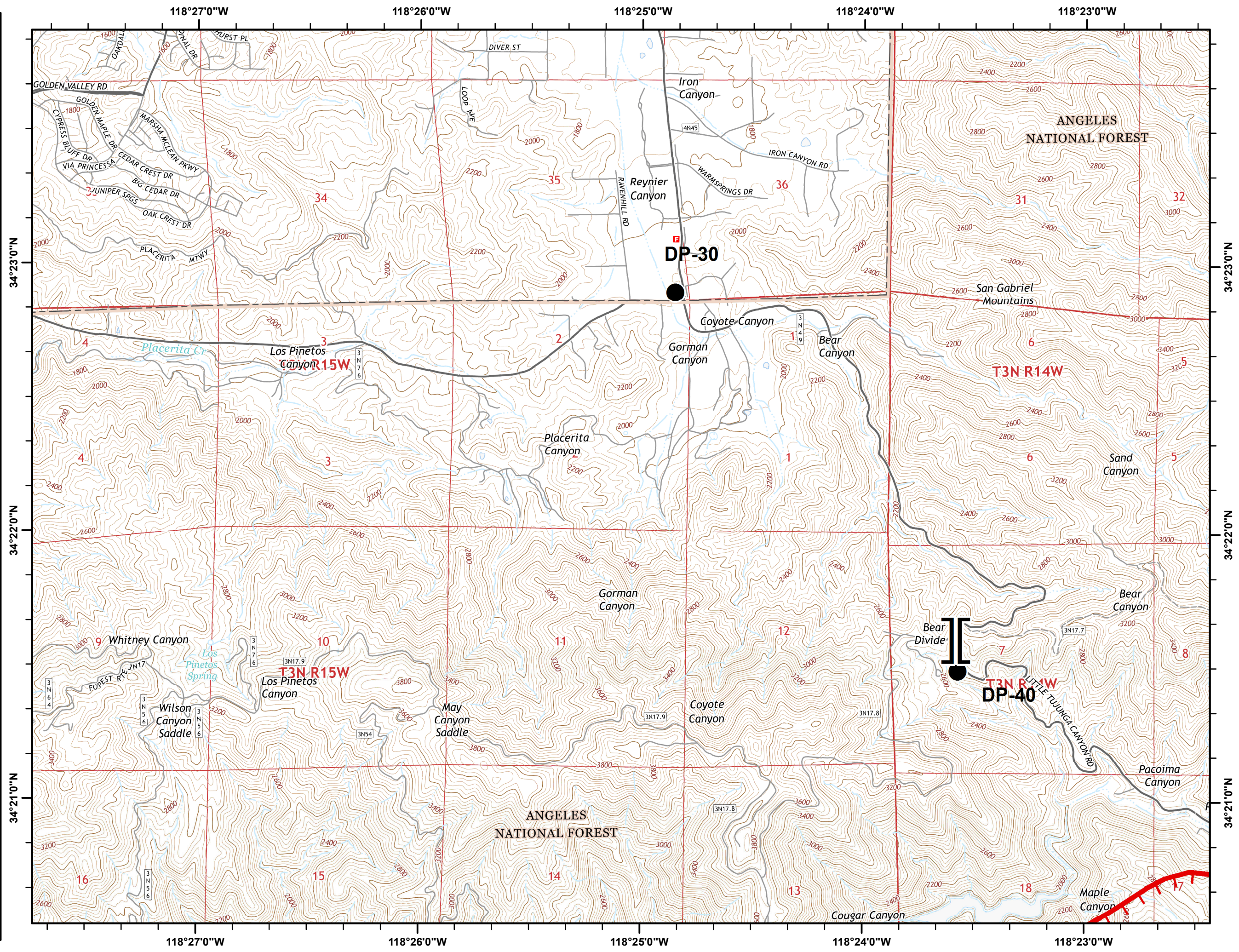
Dec 05 2017

Page 2 of 15

-  Branch
-  Drop Point
-  Staging Area
-  Incident Command Post
-  Uncontrolled Fire Edge



LACo GISS E. Lamas








# CREEK FIRE

## Incident Action Plan Map

CA-LAC-362189

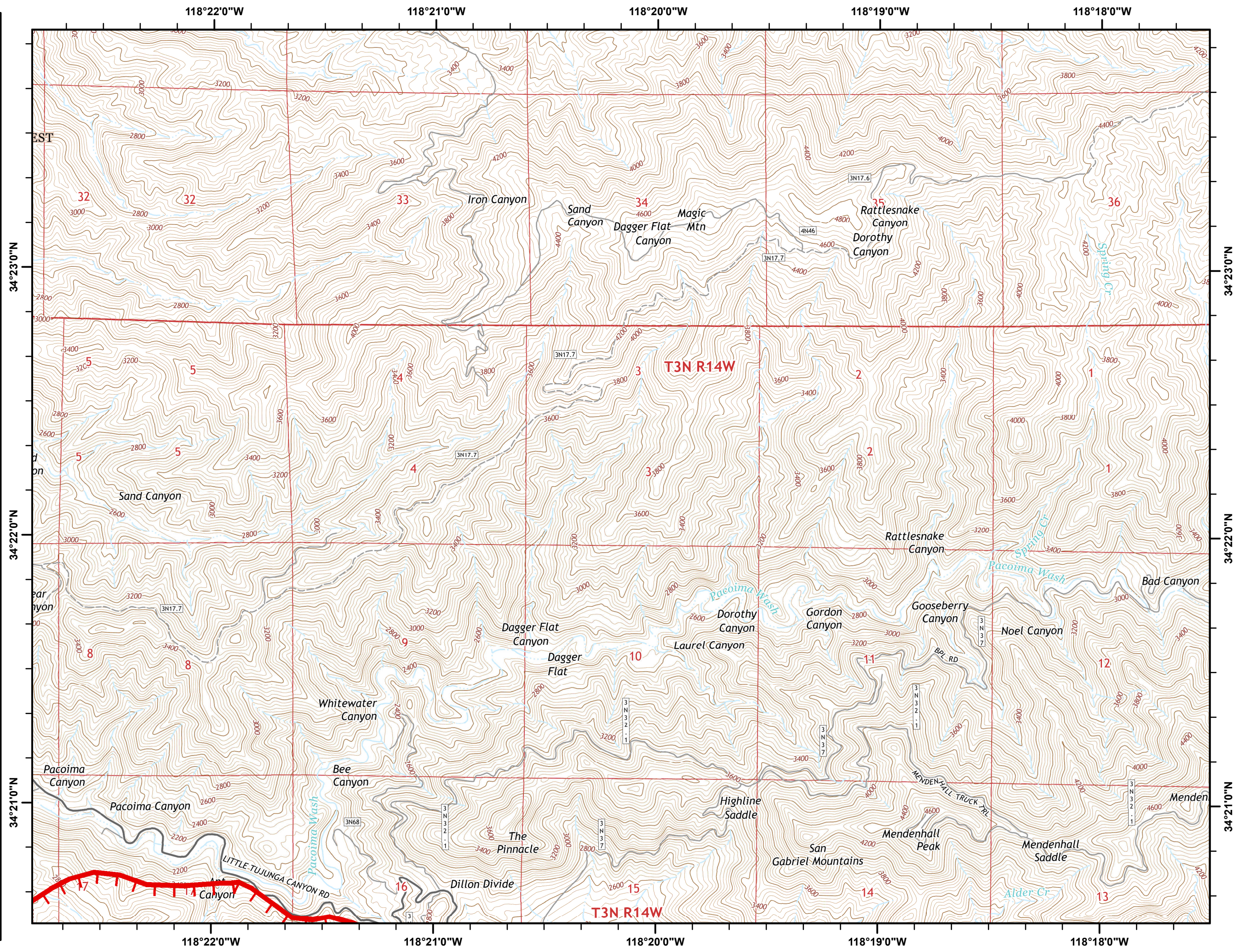
Dec 05 2017

Page 3 of 15

-  Branch
-  Drop Point
-  Staging Area
-  Incident Command Post
-  Uncontrolled Fire Edge



LACo GISS E. Lamas








# CREEK FIRE

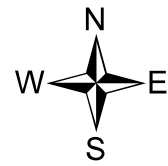
## Incident Action Plan Map

CA-LAC-362189

Dec 05 2017

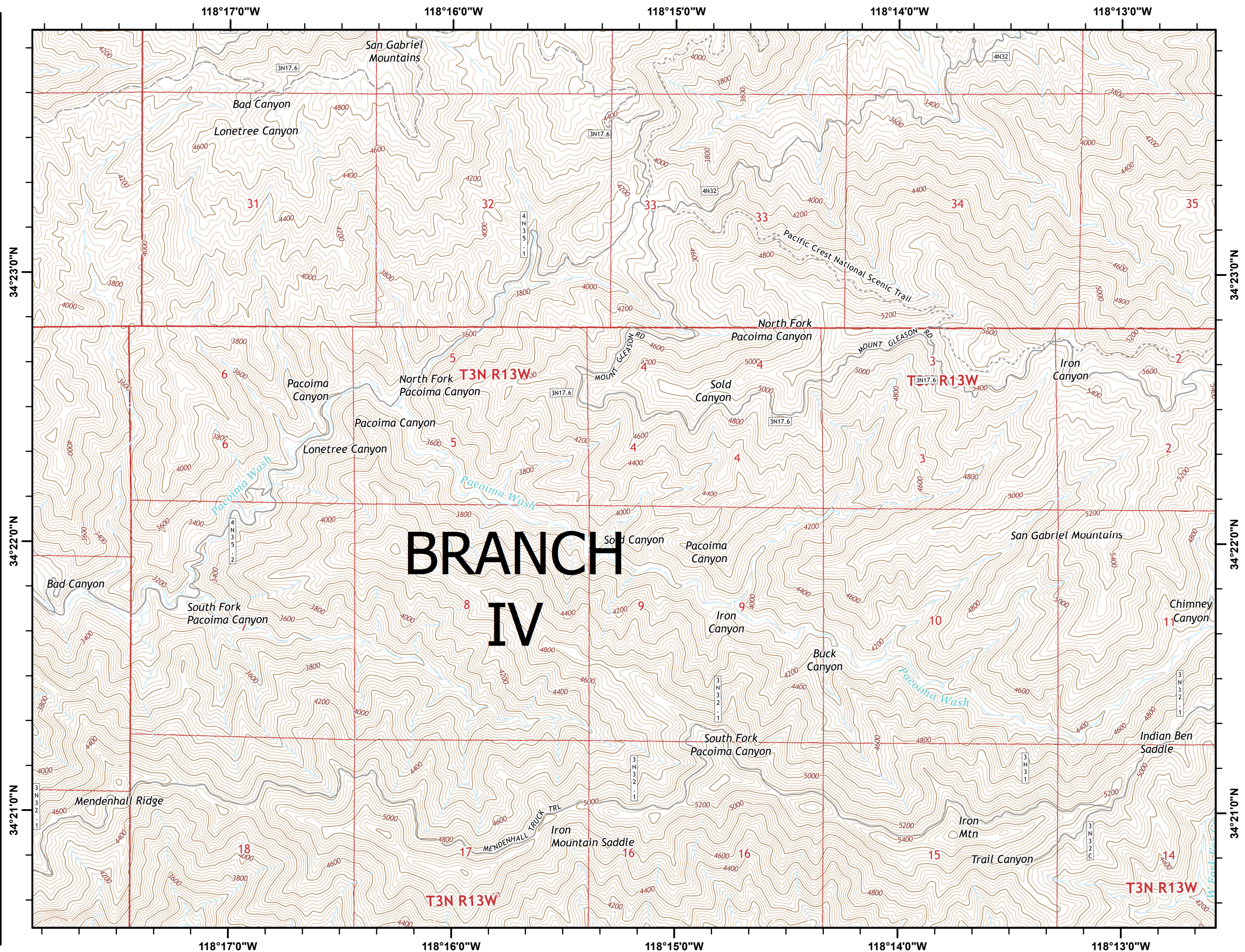
Page 4 of 15

-  Branch
-  Drop Point
-  Staging Area
-  Incident Command Post
-  Uncontrolled Fire Edge



Miles  
0.25 0 0.25 0.5

LACo GISS E. Lamas








# CREEK FIRE

## Incident Action Plan Map

CA-LAC-362189

Dec 05 2017

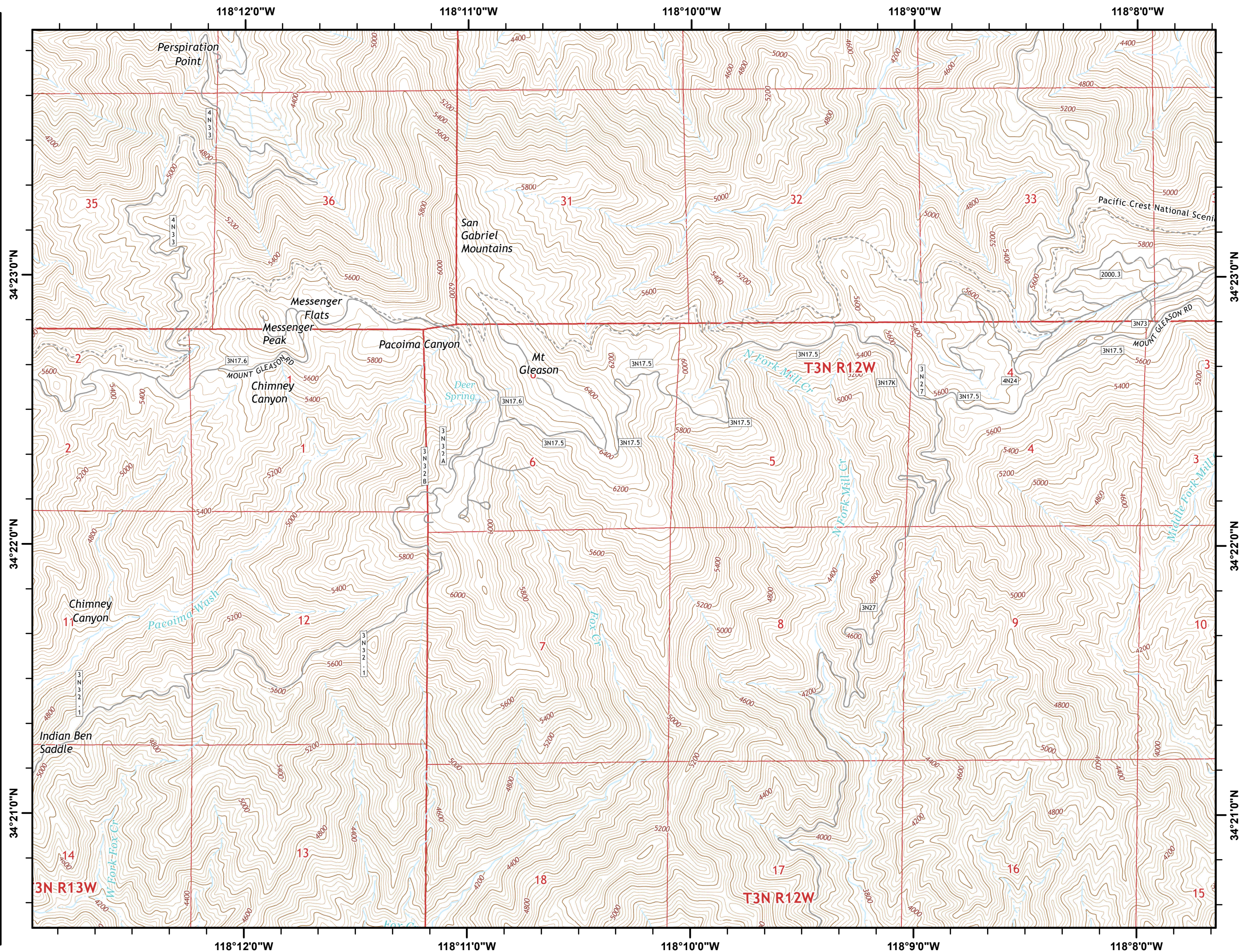
Page 5 of 15

-  Branch
-  Drop Point
-  Staging Area
-  Incident Command Post
-  Uncontrolled Fire Edge



Miles  
0.25 0 0.25 0.5

LACo GISS E. Lamas








# CREEK FIRE

## Incident Action Plan Map

CA-LAC-362189

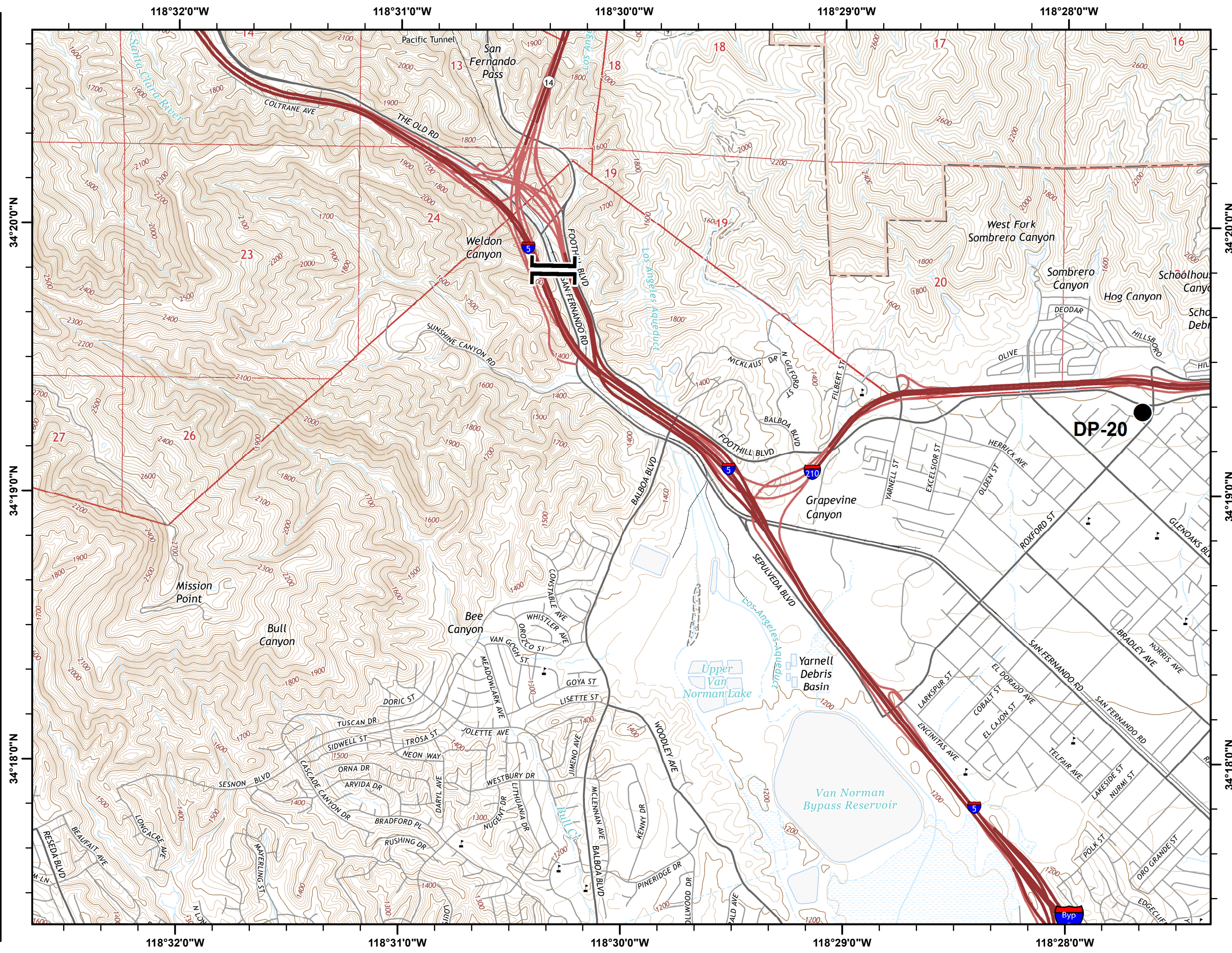
Dec 05 2017

Page 6 of 15

-  Branch
-  Drop Point
-  Staging Area
-  Incident Command Post
-  Uncontrolled Fire Edge



LACo GISS E. Lamas








# CREEK FIRE

## Incident Action Plan Map

CA-LAC-362189

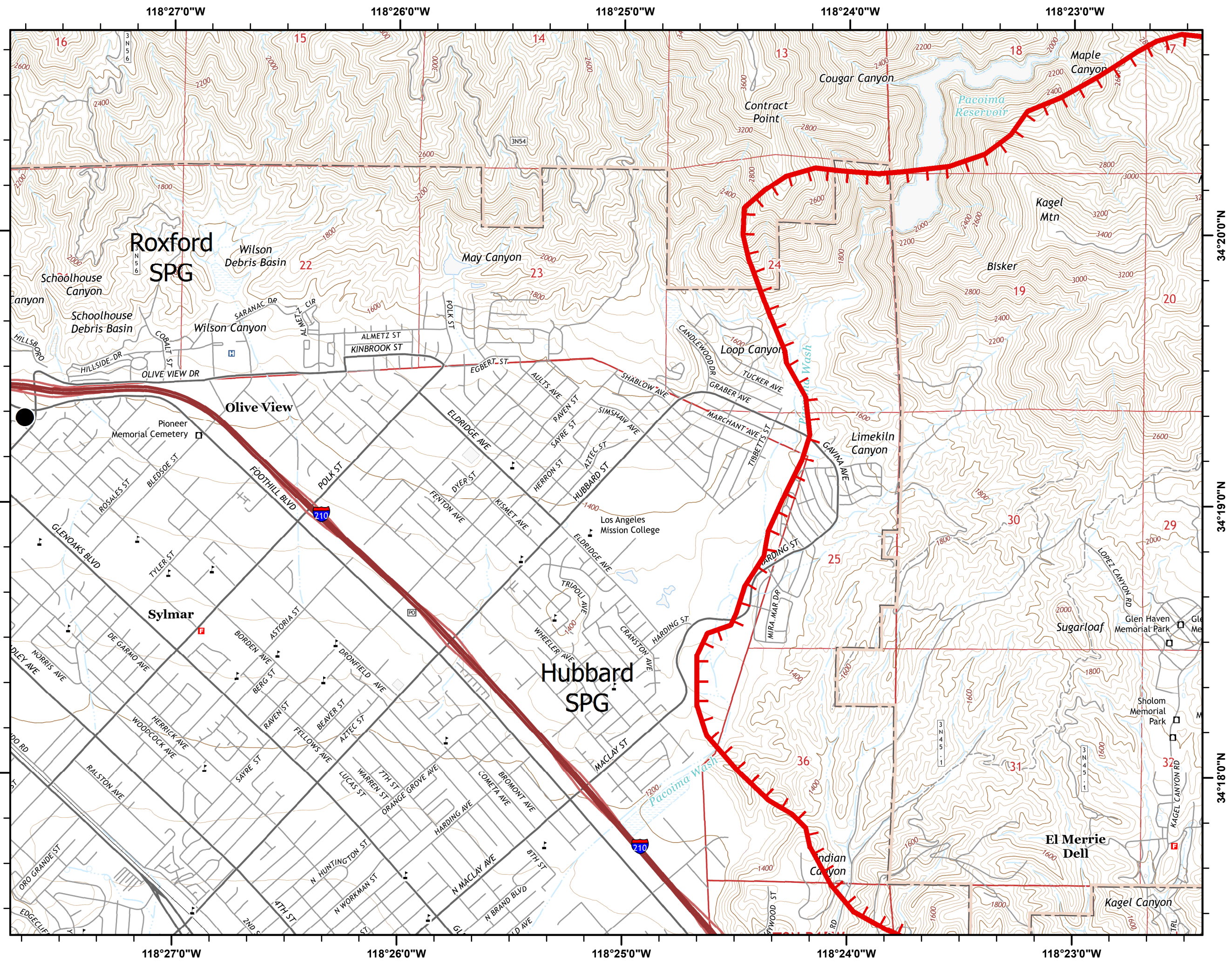
Dec 05 2017

Page 7 of 15

-  Branch
-  Drop Point
-  Staging Area
-  Incident Command Post
-  Uncontrolled Fire Edge



LACo GISS E. Lamas










# CREEK FIRE

## Incident Action Plan Map

CA-LAC-362189

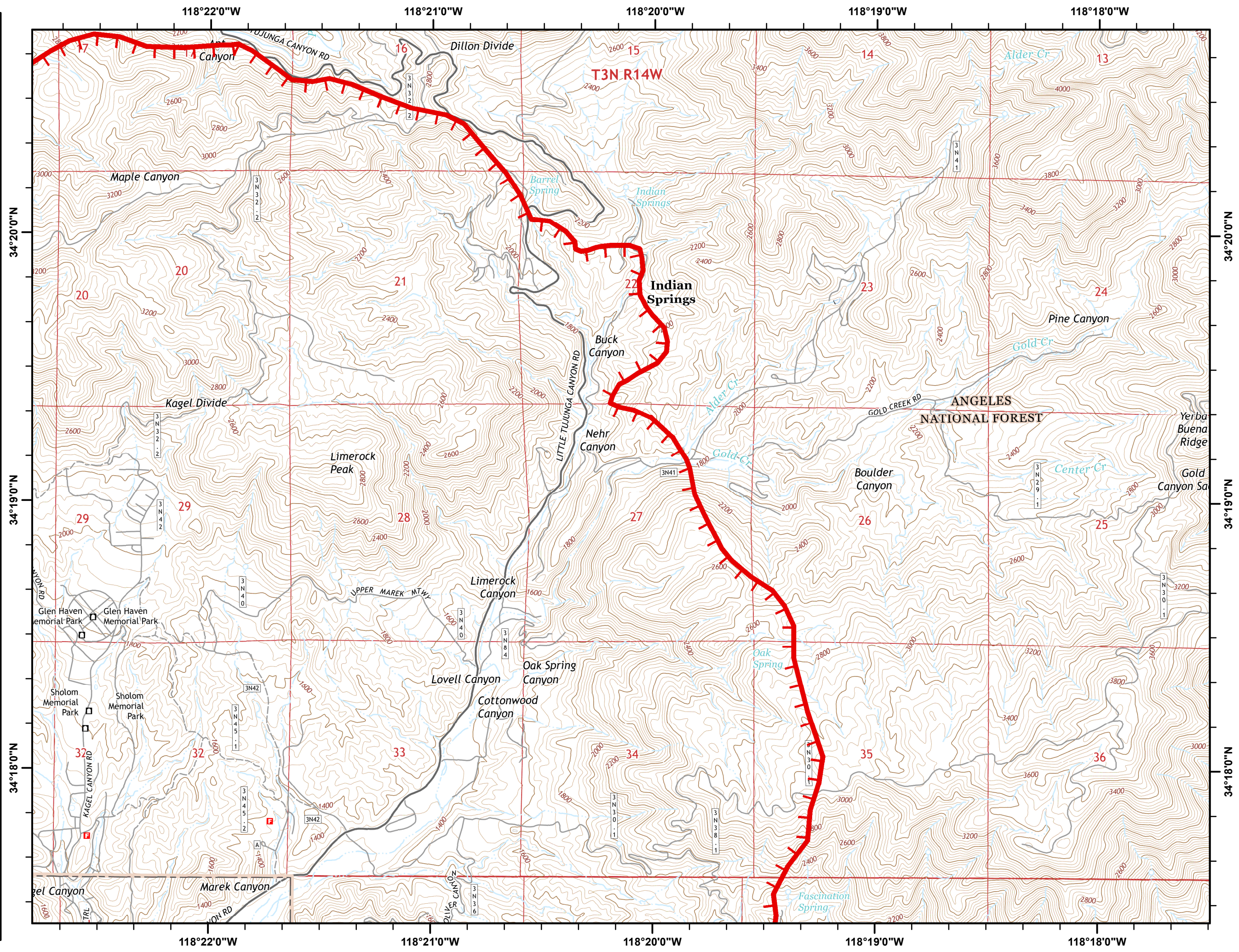
Dec 05 2017

Page 8 of 15

-  Branch
-  Drop Point
-  Staging Area
-  Incident Command Post
-  Uncontrolled Fire Edge



LACo GISS E. Lamas








# CREEK FIRE

## Incident Action Plan Map

CA-LAC-362189

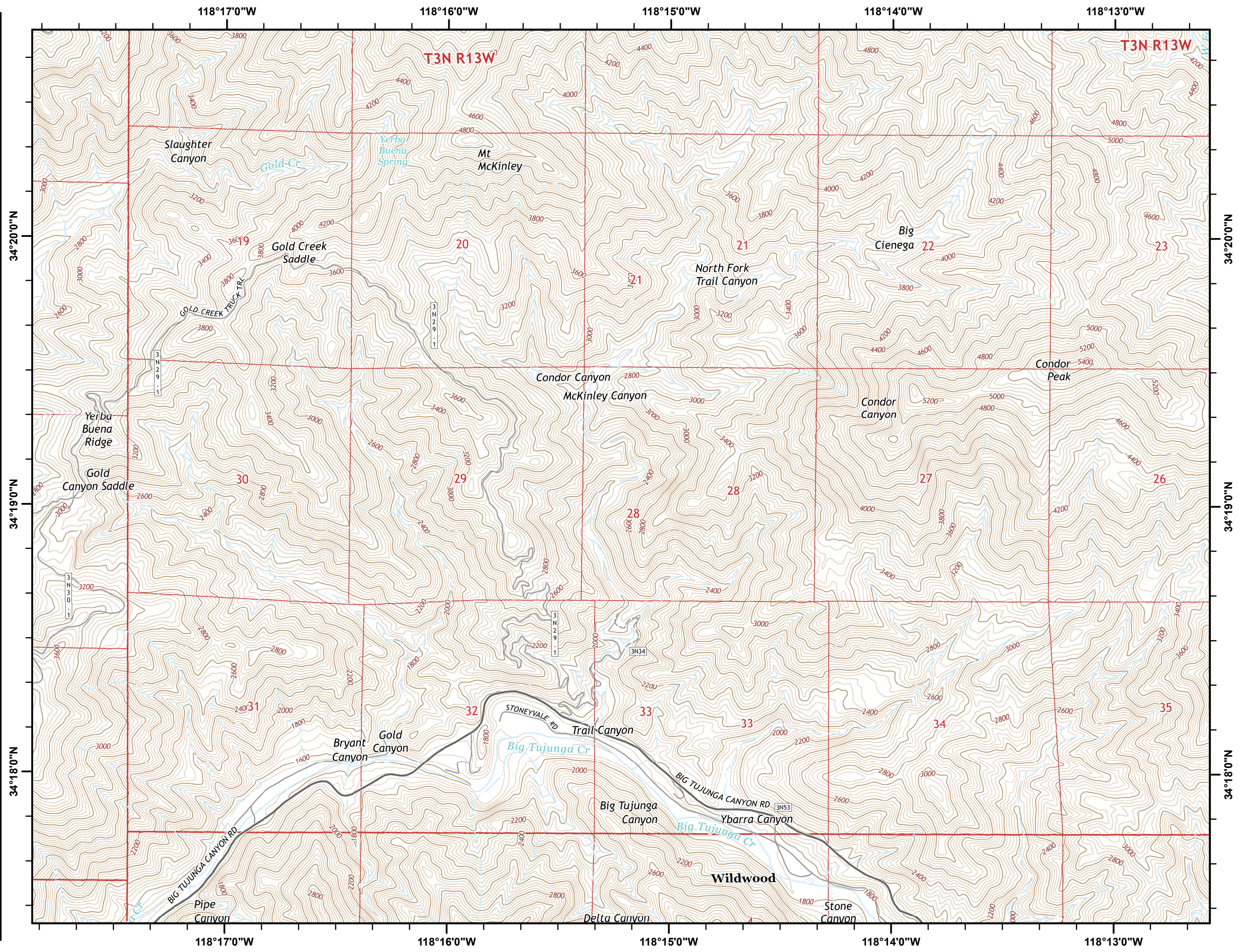
Dec 05 2017

Page 9 of 15

-  Branch
-  Drop Point
-  Staging Area
-  Incident Command Post
-  Uncontrolled Fire Edge



LACo GISS E. Lamas








# CREEK FIRE

## Incident Action Plan Map

CA-LAC-362189

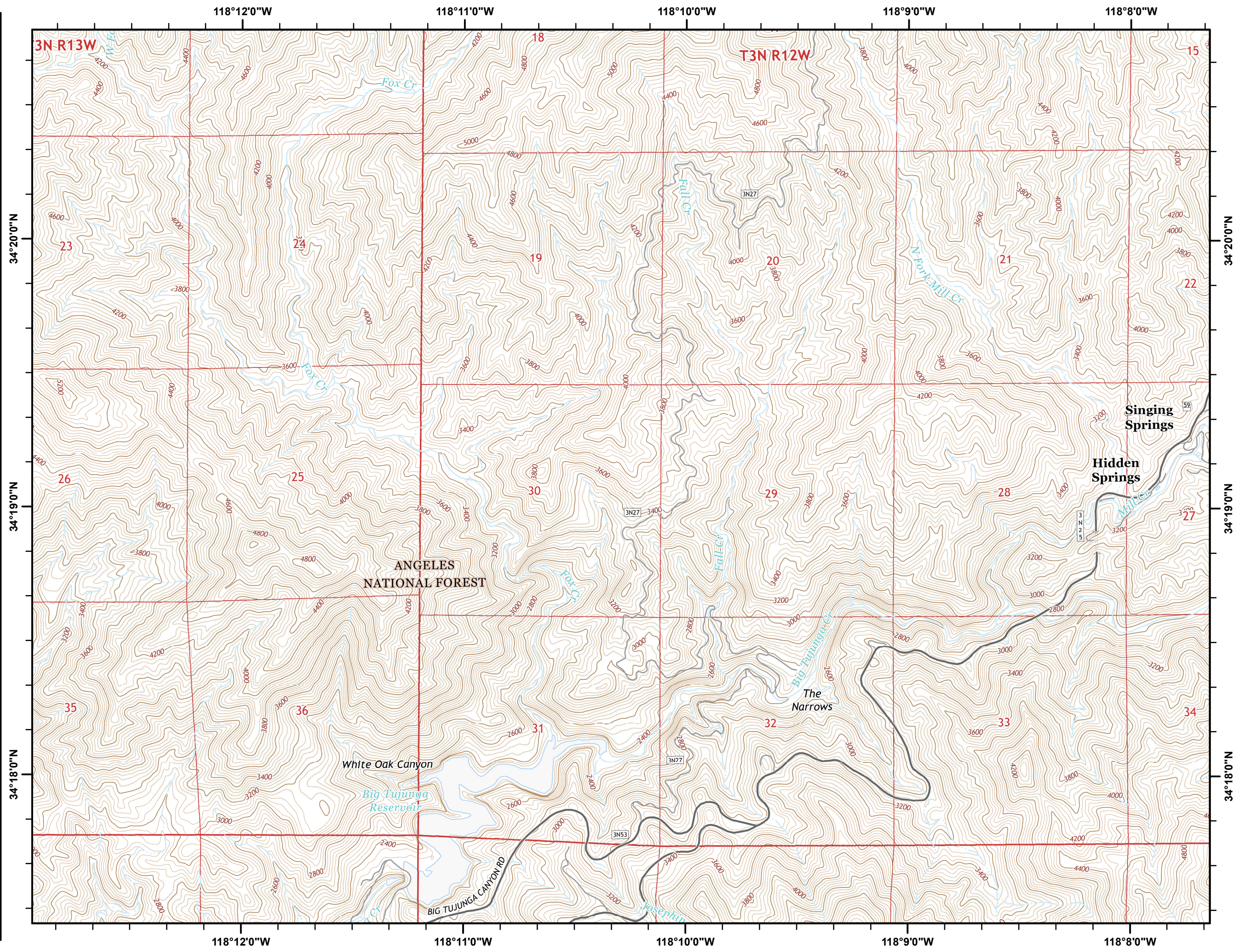
Dec 05 2017

Page 10 of 15

-  Branch
-  Drop Point
-  Staging Area
-  Incident Command Post
-  Uncontrolled Fire Edge



LACo GISS E. Lamas








# CREEK FIRE

## Incident Action Plan Map

CA-LAC-362189

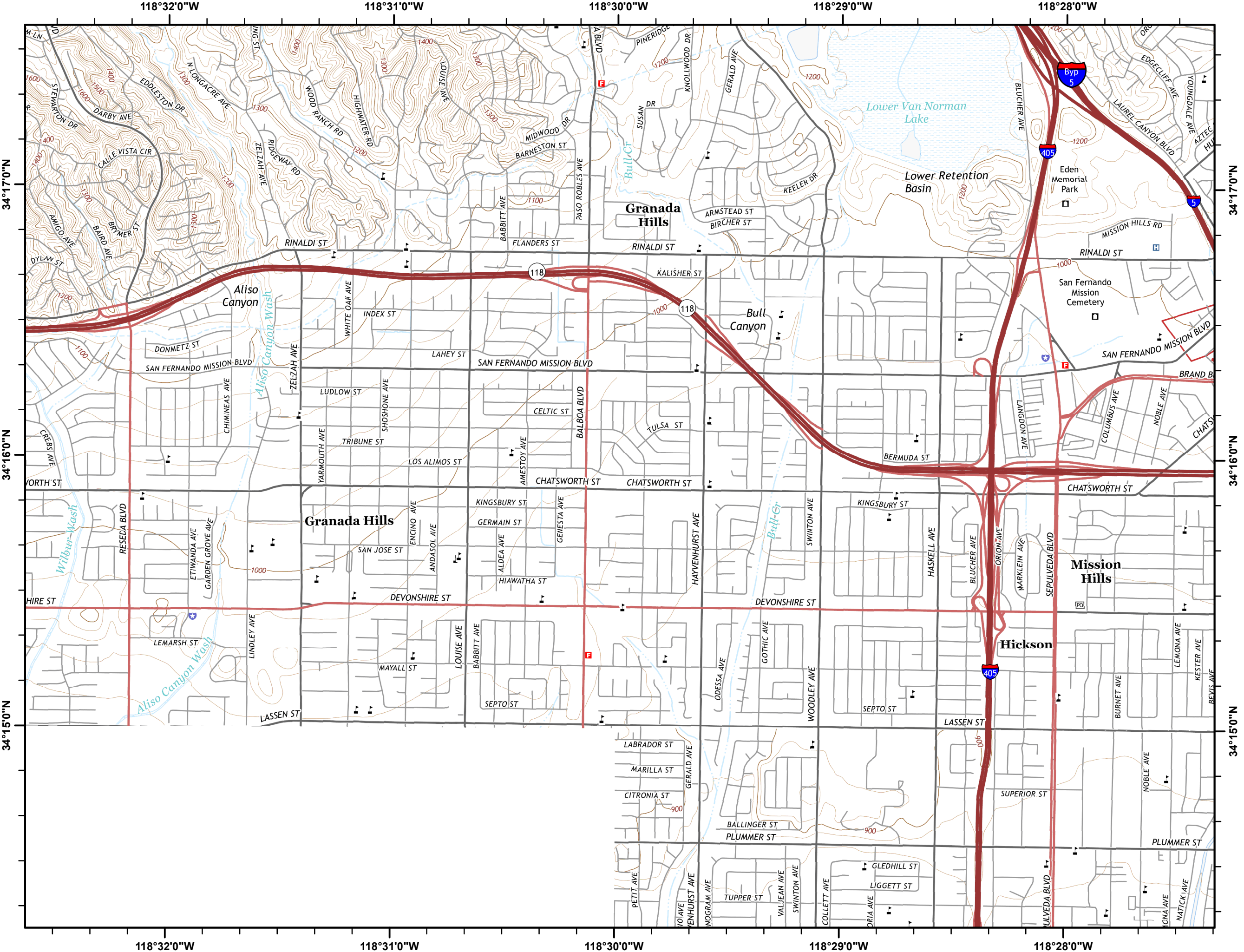
Dec 05 2017

Page 11 of 15

-  Branch
-  Drop Point
-  Staging Area
-  Incident Command Post
-  Uncontrolled Fire Edge



LACo GISS E. Lamas








# CREEK FIRE

## Incident Action Plan Map

CA-LAC-362189

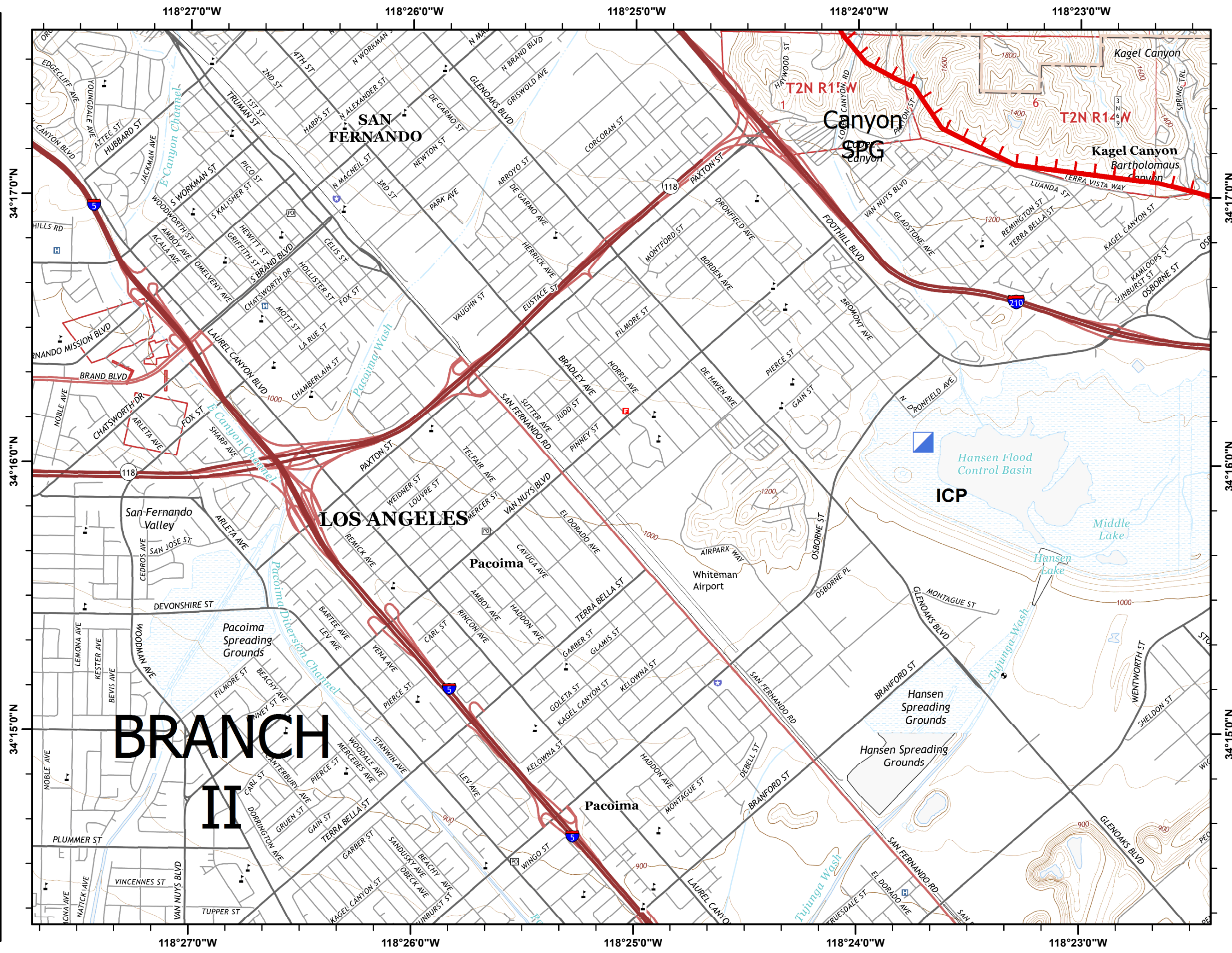
Dec 05 2017

Page 12 of 15

-  Branch
-  Drop Point
-  Staging Area
-  Incident Command Post
-  Uncontrolled Fire Edge



LACo GISS E. Lamas








# CREEK FIRE

## Incident Action Plan Map

CA-LAC-362189

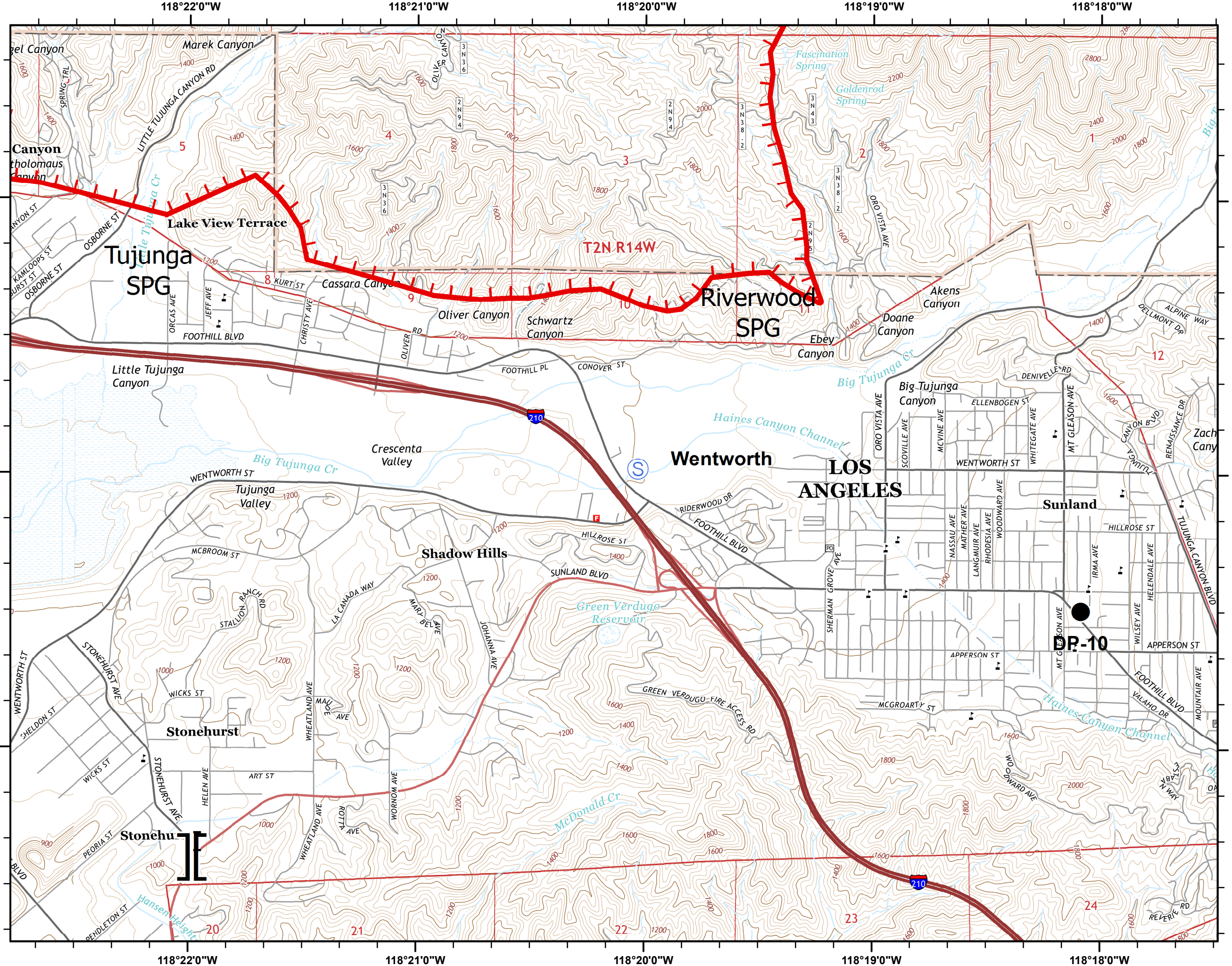
Dec 05 2017

Page 13 of 15

-  Branch
-  Drop Point
-  Staging Area
-  Incident Command Post
-  Uncontrolled Fire Edge



LACo GISS E. Lamas








# CREEK FIRE

## Incident Action Plan Map

CA-LAC-362189

Dec 05 2017

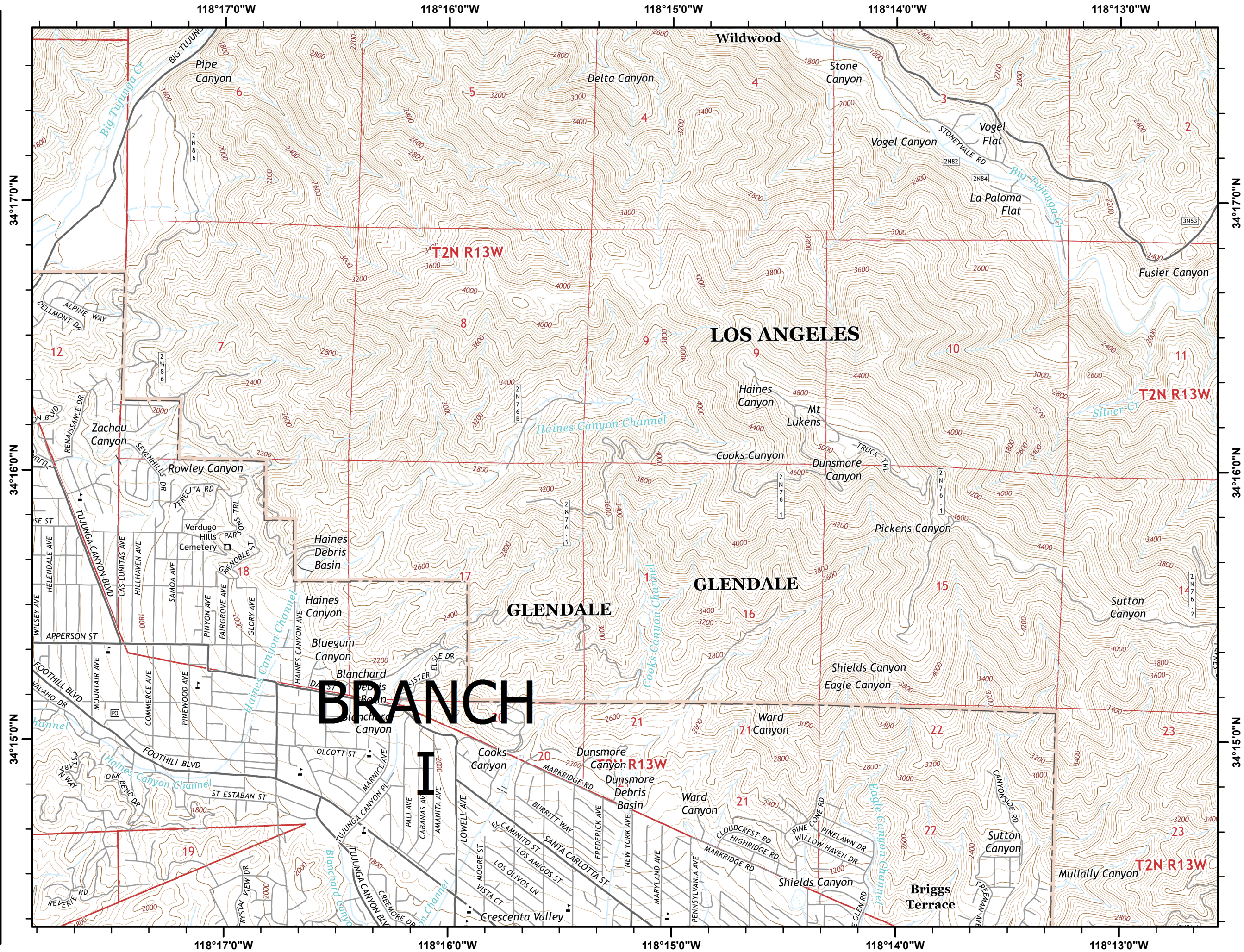
Page 14 of 15

-  Branch
-  Drop Point
-  Staging Area
-  Incident Command Post
-  Uncontrolled Fire Edge



Miles  
0.25 0 0.25 0.5

LACo GISS E. Lamas








# CREEK FIRE

## Incident Action Plan Map

CA-LAC-362189

Dec 05 2017

Page 15 of 15

-  Branch
-  Drop Point
-  Staging Area
-  Incident Command Post
-  Uncontrolled Fire Edge



LACo GISS E. Lamas

