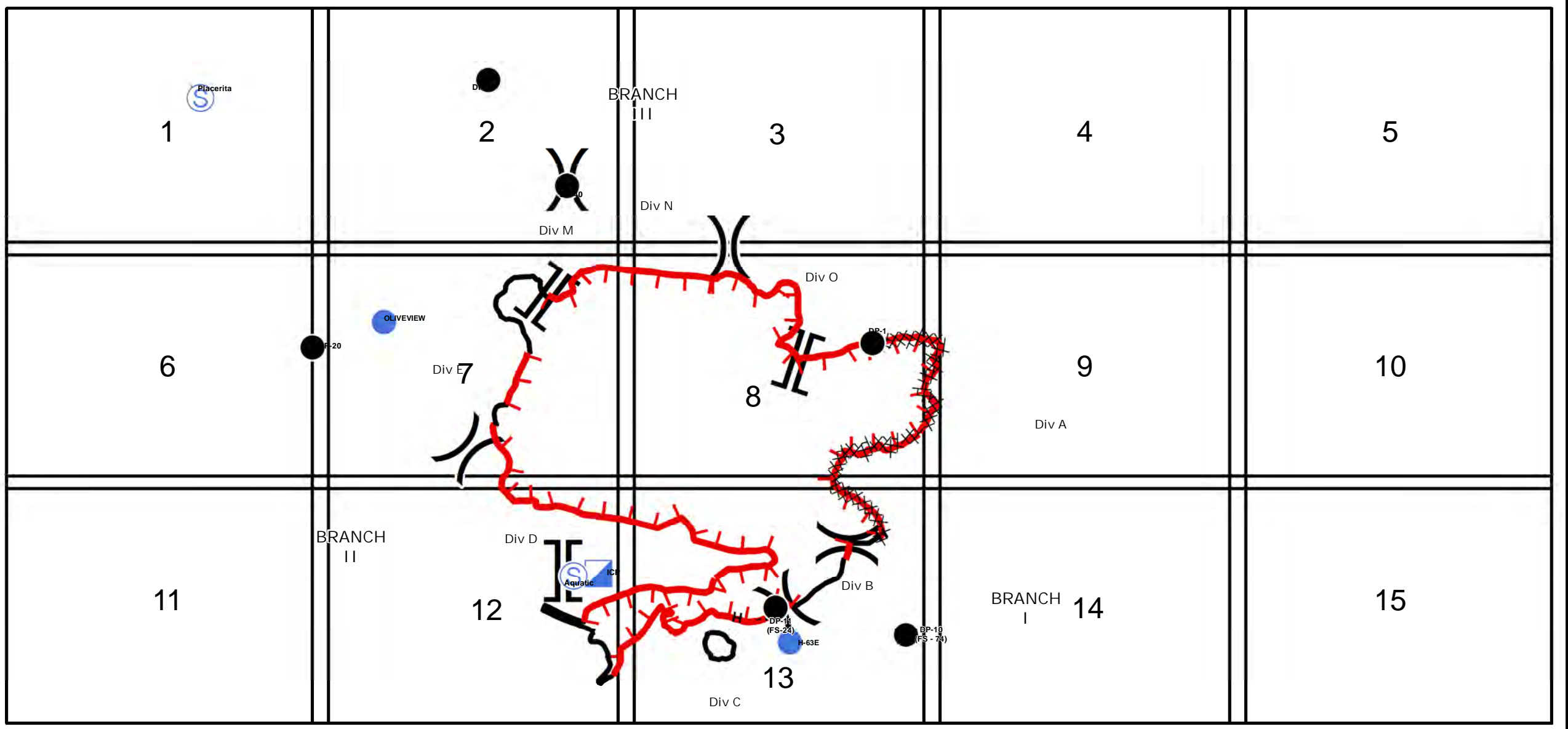


118°32'0"W 118°30'0"W 118°28'0"W 118°26'0"W 118°24'0"W 118°22'0"W 118°20'0"W 118°18'0"W 118°16'0"W 118°14'0"W 118°12'0"W 118°10'0"W 118°8'0"W

34°11'0"N 34°12'0"N 34°13'0"N 34°14'0"N 34°15'0"N 34°16'0"N 34°17'0"N 34°18'0"N 34°19'0"N 34°20'0"N 34°21'0"N 34°22'0"N 34°23'0"N 34°24'0"N 34°25'0"N 34°26'0"N



118°32'0"W 118°30'0"W 118°28'0"W 118°26'0"W 118°24'0"W 118°22'0"W 118°20'0"W 118°18'0"W 118°16'0"W 118°14'0"W 118°12'0"W 118°10'0"W 118°8'0"W

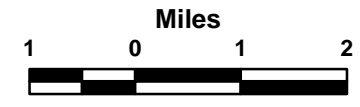
# CREEK FIRE

## Incident Action Plan Map Index Grid

CA-LAC-362189  
Dec 7, 2017

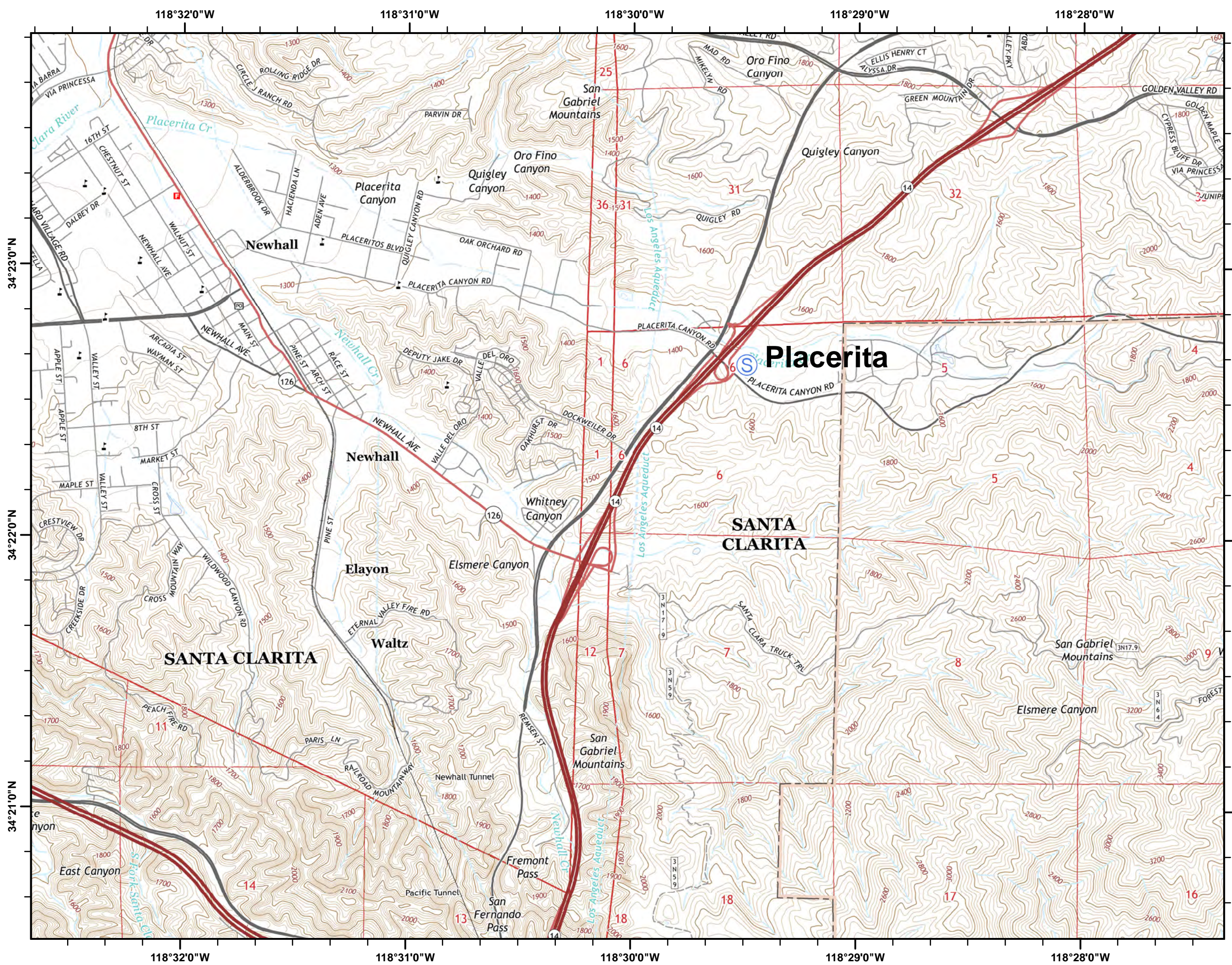


- Branch
- Division
- Drop Point
- Staging Area
- Helispot
- Incident Command Post
- Uncontrolled Fire Edge
- Completed Line
- Completed Dozer Line
- Hand Line



LACo GISS E. Lamas





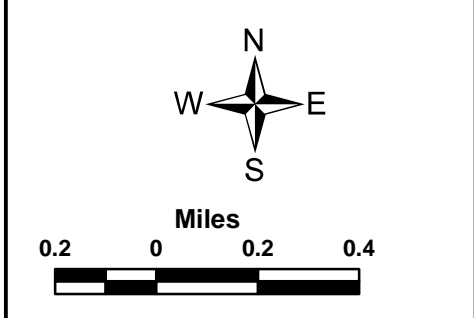
**CREEK FIRE**  
**Incident Action Plan Map**  
 CA-LAC-362189  
 Dec 7, 2017

Page 1 of 15



- Branch
- Division
- Drop Point
- Staging Area
- Helispot
- Incident Command Post
- Uncontrolled Fire Edge
- Completed Dozer Line
- Completed Line
- Hand Line

1	2	3	4	5
6	7	8	9	10
11	12	13	14	15





118°27'0"W

118°26'0"W

118°25'0"W

118°24'0"W

118°23'0"W

# CREEK FIRE

## Incident Action Plan Map

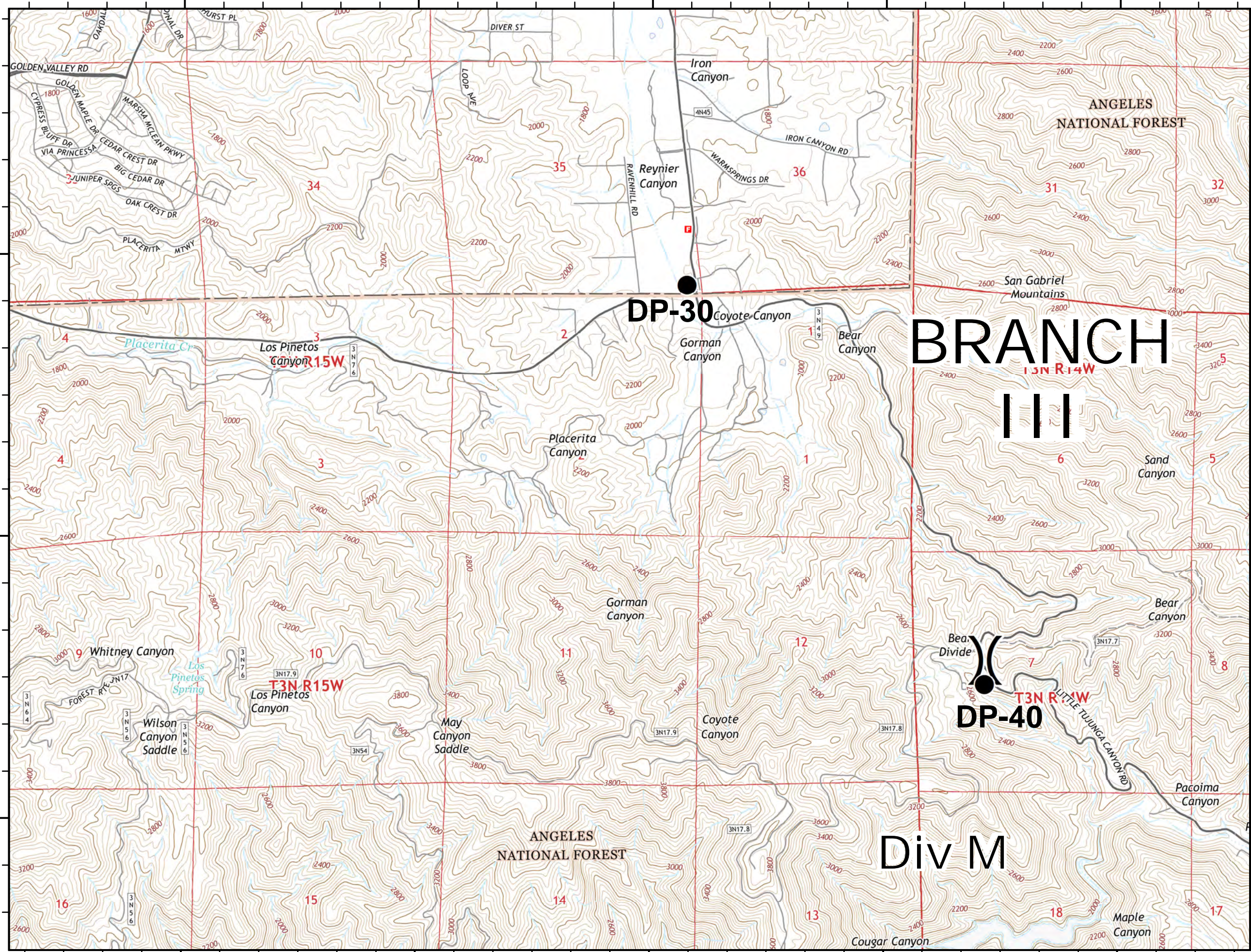
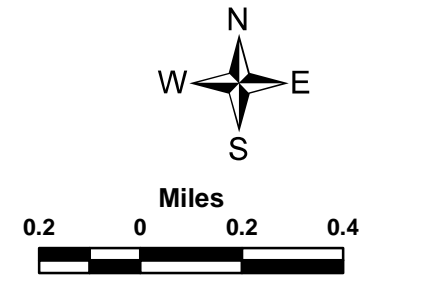
CA-LAC-362189  
Dec 7, 2017

Page 2 of 15



- Branch
- Division
- Drop Point
- Staging Area
- Helispot
- Incident Command Post
- Uncontrolled Fire Edge
- Completed Dozer Line
- Completed Line
- Hand Line

1	2	3	4	5
6	7	8	9	10
11	12	13	14	15



34°23'0"N

34°23'0"N

34°22'0"N

34°22'0"N

34°21'0"N

34°21'0"N

118°27'0"W

118°26'0"W

118°25'0"W

118°24'0"W

118°23'0"W



118°22'0"W

118°21'0"W

118°20'0"W

118°19'0"W

118°18'0"W

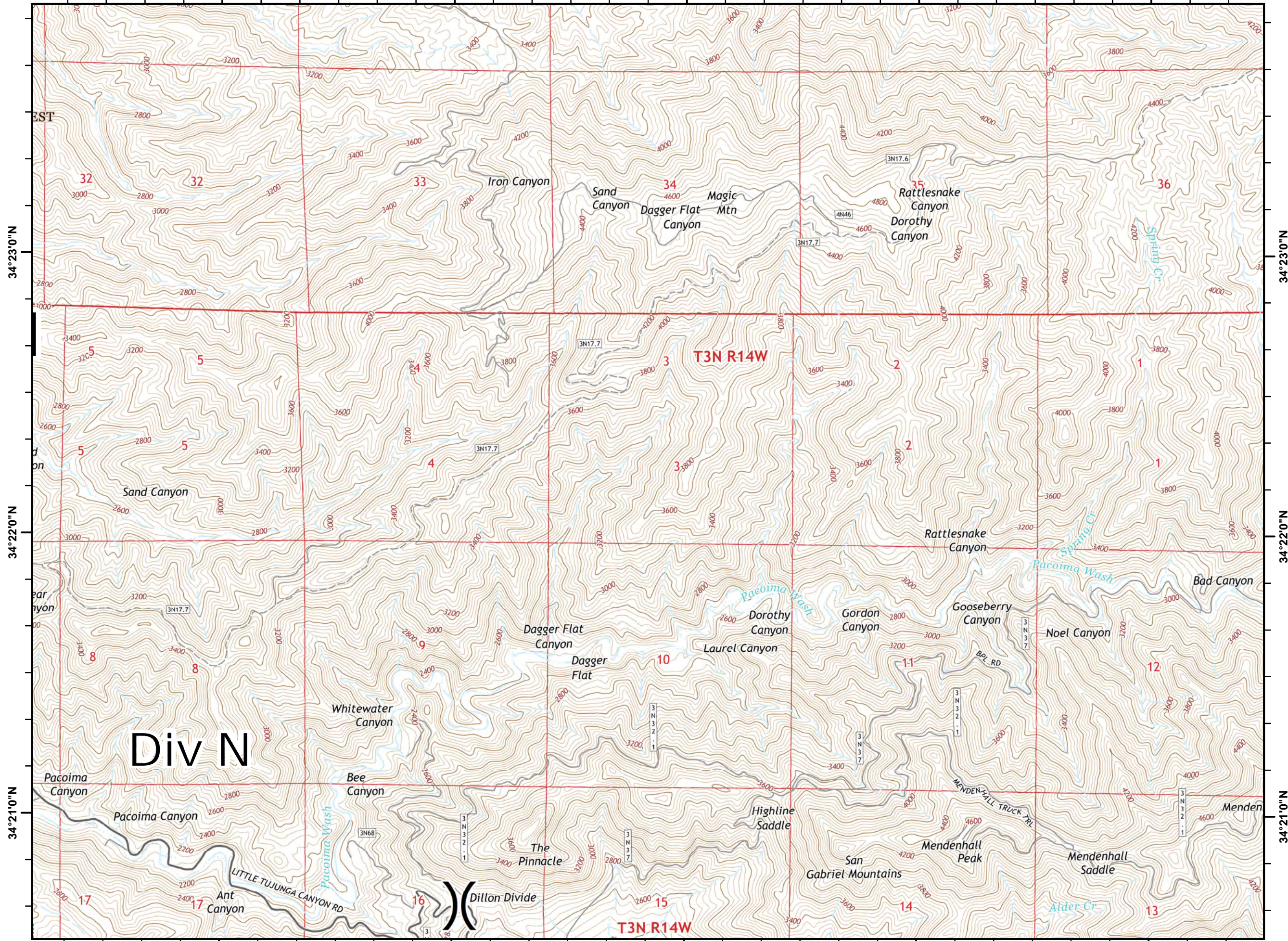
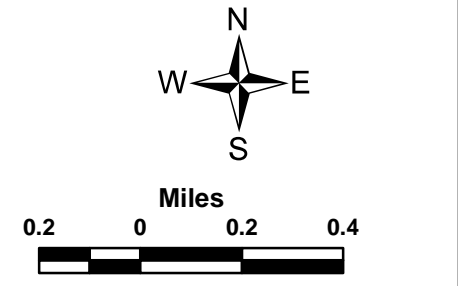
**CREEK FIRE**  
 Incident Action Plan Map  
 CA-LAC-362189  
 Dec 7, 2017

Page 3 of 15



- Branch
- Division
- Drop Point
- Staging Area
- Helispot
- Incident Command Post
- Uncontrolled Fire Edge
- Completed Dozer Line
- Completed Line
- Hand Line

1	2	3	4	5
6	7	8	9	10
11	12	13	14	15



118°22'0"W

118°21'0"W

118°20'0"W

118°19'0"W

118°18'0"W



118°17'0"W

118°16'0"W

118°15'0"W

118°14'0"W

118°13'0"W

# CREEK FIRE

## Incident Action Plan Map

CA-LAC-362189

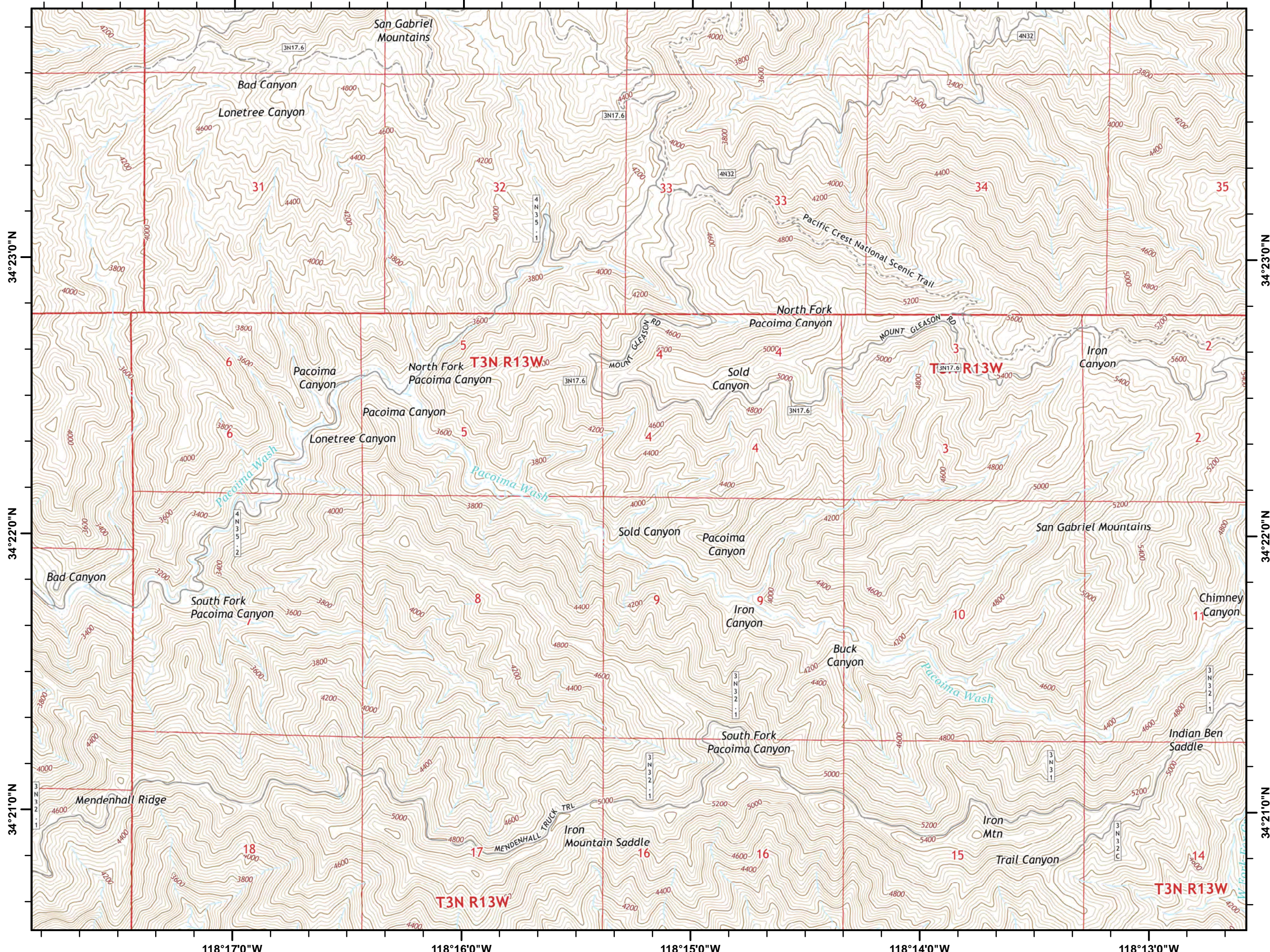
Dec 7, 2017

Page 4 of 15



- Branch
- Division
- Drop Point
- Staging Area
- Helispot
- Incident Command Post
- Uncontrolled Fire Edge
- Completed Dozer Line
- Completed Line
- Hand Line

1	2	3	4	5
6	7	8	9	10
11	12	13	14	15



118°17'0"W

118°16'0"W

118°15'0"W

118°14'0"W

118°13'0"W

34°23'0"N

34°23'0"N

34°22'0"N

34°22'0"N

34°21'0"N

34°21'0"N



118°12'0"W

118°11'0"W

118°10'0"W

118°9'0"W

118°8'0"W

34°23'0"N

34°23'0"N

34°22'0"N

34°22'0"N

34°21'0"N

34°21'0"N

118°12'0"W

118°11'0"W

118°10'0"W

118°9'0"W

118°8'0"W

# CREEK FIRE

## Incident Action Plan Map

CA-LAC-362189

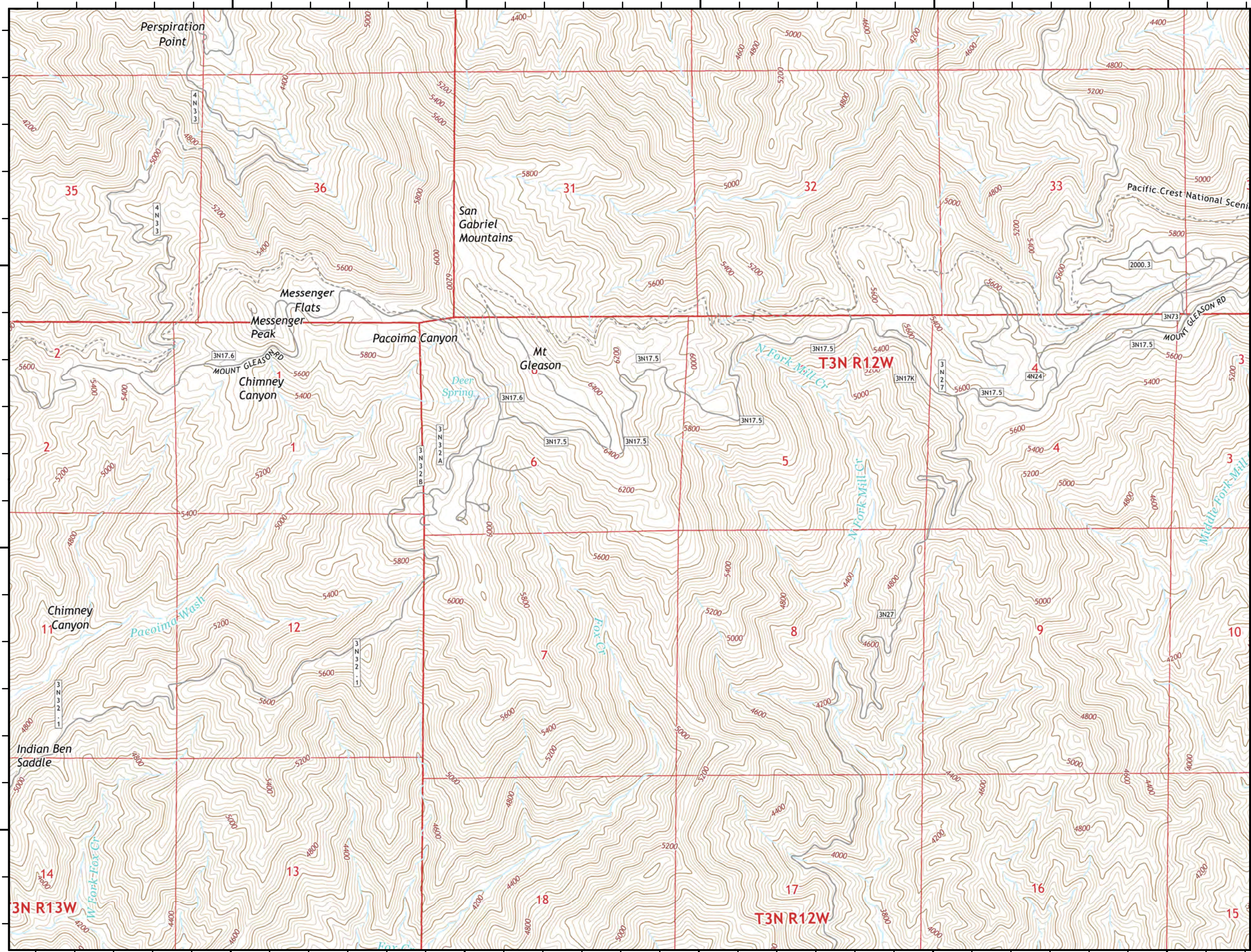
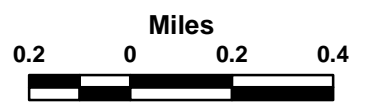
Dec 7, 2017

Page 5 of 15

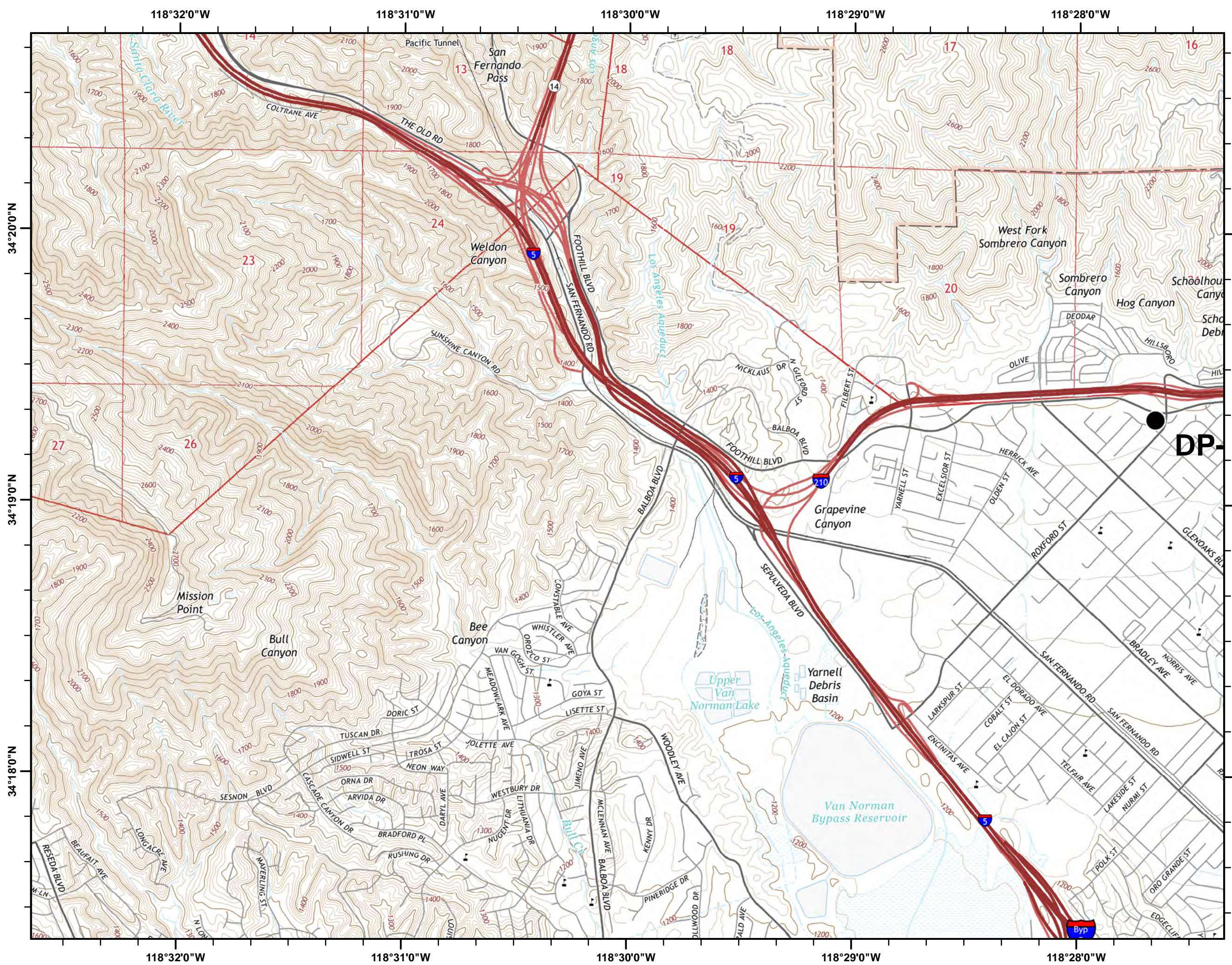


- Branch
- Division
- Drop Point
- Staging Area
- Helispot
- Incident Command Post
- Uncontrolled Fire Edge
- Completed Dozer Line
- Completed Line
- Hand Line

1	2	3	4	5
6	7	8	9	10
11	12	13	14	15





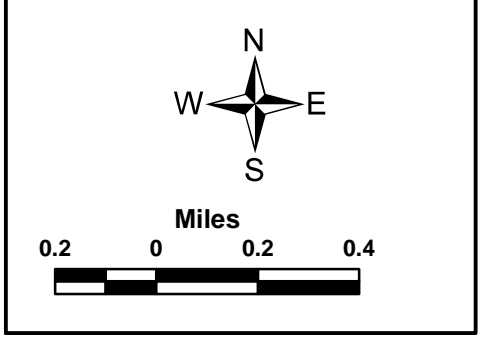


**CREEK FIRE**  
**Incident Action Plan Map**  
 CA-LAC-362189  
 Dec 7, 2017  
**Page 6 of 15**



- Branch
- Division
- Drop Point
- Staging Area
- Helispot
- Incident Command Post
- Uncontrolled Fire Edge
- Completed Dozer Line
- Completed Line
- Hand Line

1	2	3	4	5
6	7	8	9	10
11	12	13	14	15





118°27'0"W

118°26'0"W

118°25'0"W

118°24'0"W

118°23'0"W

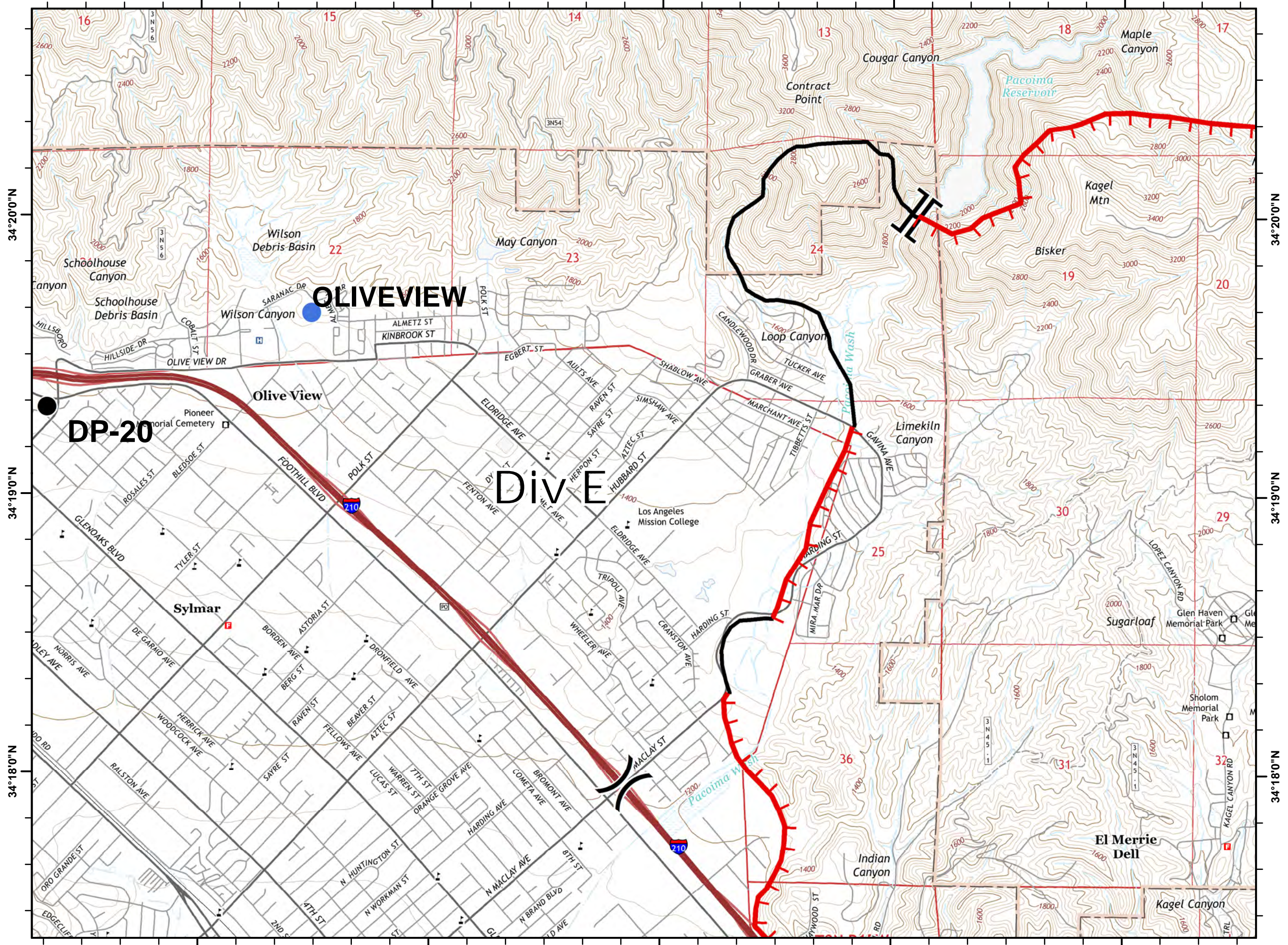
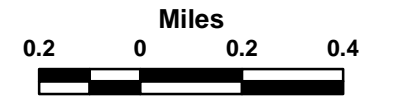
**CREEK FIRE**  
 Incident Action Plan Map  
 CA-LAC-362189  
 Dec 7, 2017

Page 7 of 15



- Branch
- Division
- Drop Point
- Staging Area
- Helispot
- Incident Command Post
- Uncontrolled Fire Edge
- Completed Dozer Line
- Completed Line
- Hand Line

1	2	3	4	5
6	7	8	9	10
11	12	13	14	15



34°20'0"N

34°20'0"N

34°19'0"N

34°19'0"N

34°18'0"N

34°18'0"N

118°27'0"W

118°26'0"W

118°25'0"W

118°24'0"W

118°23'0"W



118°22'0"W

118°21'0"W

118°20'0"W

118°19'0"W

118°18'0"W

34°20'0"N

34°20'0"N

34°19'0"N

34°19'0"N

34°18'0"N

34°18'0"N

118°22'0"W

118°21'0"W

118°20'0"W

118°19'0"W

118°18'0"W

# CREEK FIRE

## Incident Action Plan Map

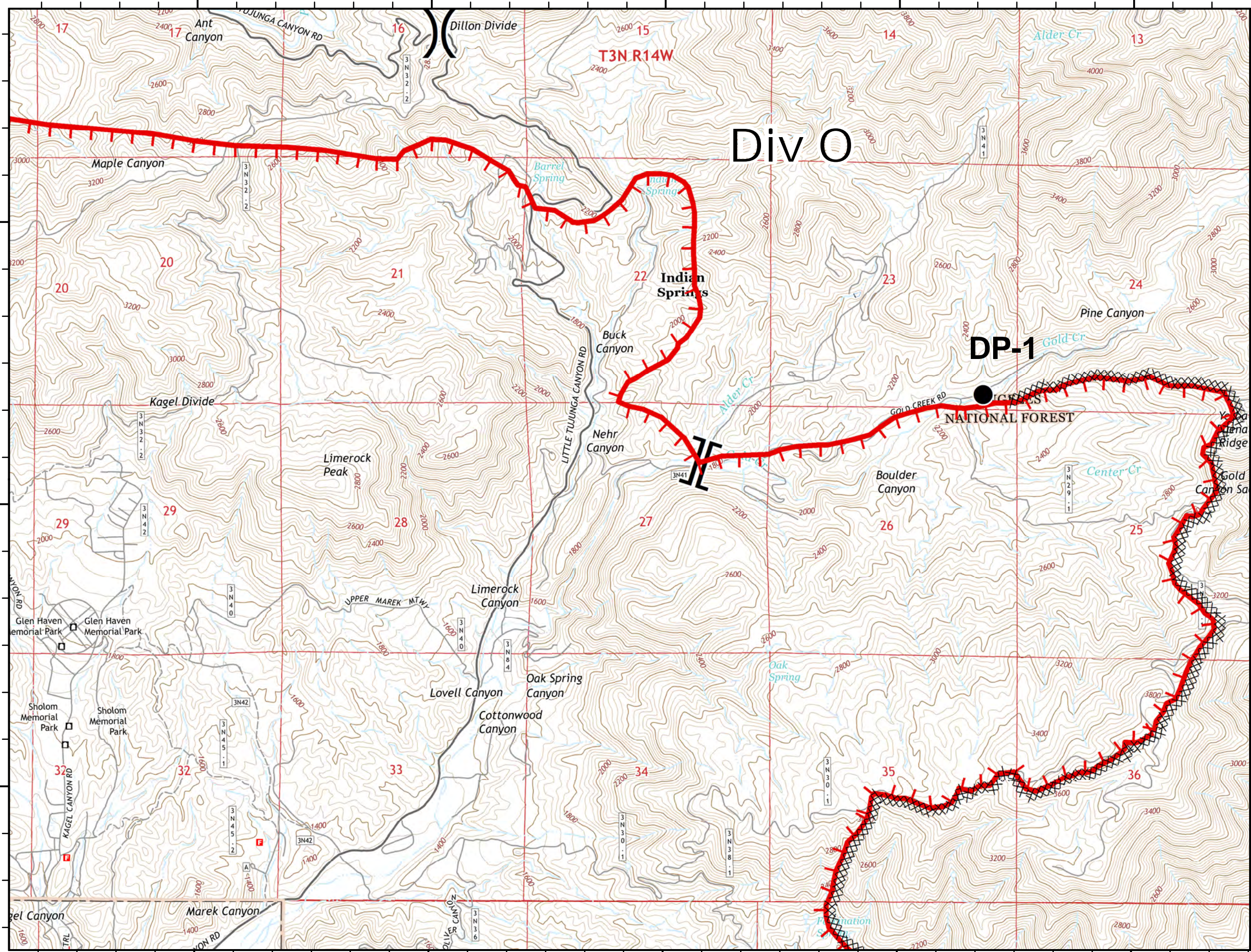
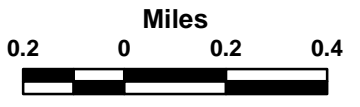
CA-LAC-362189  
Dec 7, 2017

Page 8 of 15



- Branch
- Division
- Drop Point
- Staging Area
- Helispot
- Incident Command Post
- Uncontrolled Fire Edge
- Completed Dozer Line
- Completed Line
- Hand Line

1	2	3	4	5
6	7	8	9	10
11	12	13	14	15





118°17'0"W

118°16'0"W

118°15'0"W

118°14'0"W

118°13'0"W

# CREEK FIRE

## Incident Action Plan Map

CA-LAC-362189

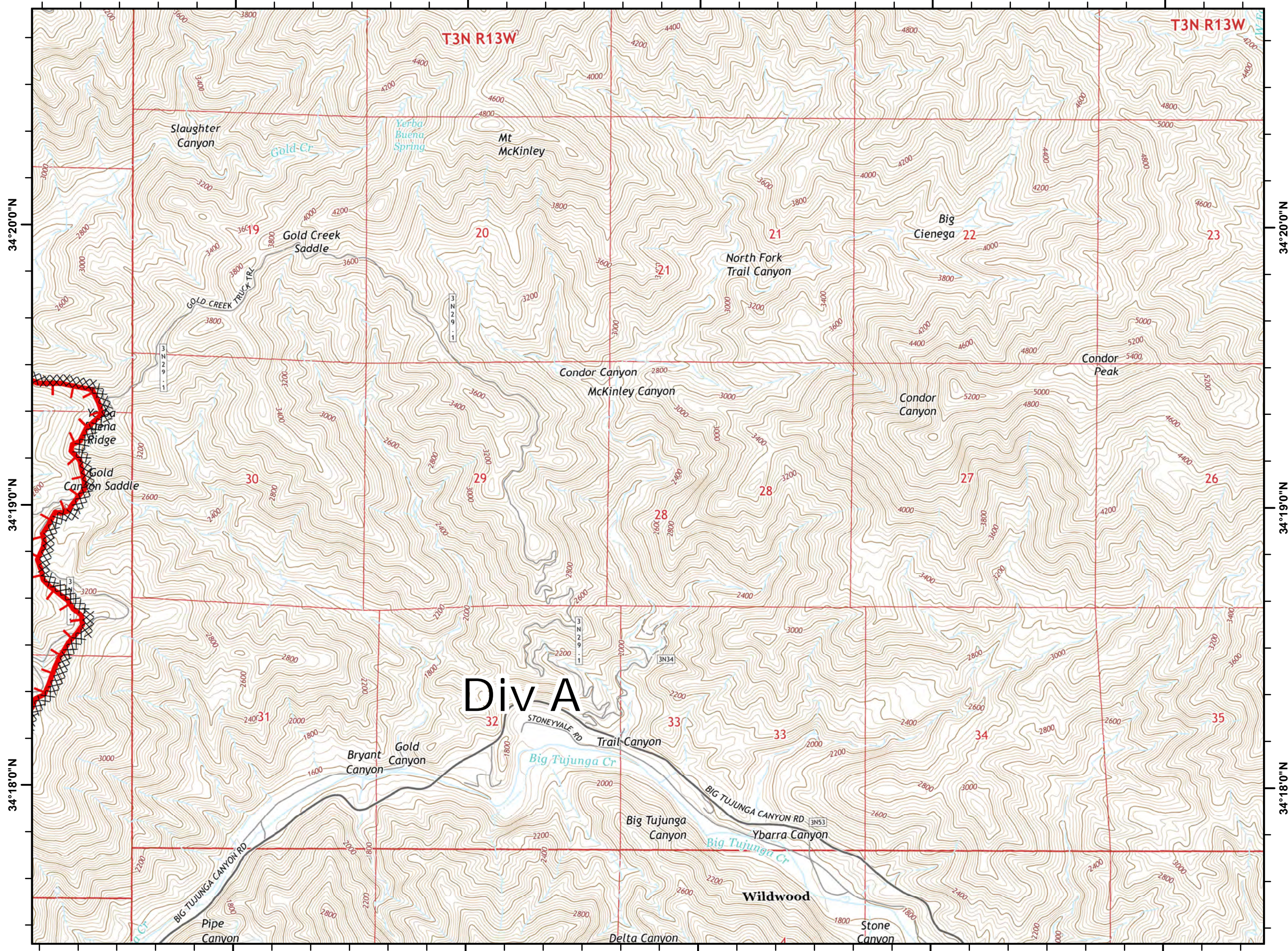
Dec 7, 2017

Page 9 of 15



- Branch
- Division
- Drop Point
- Staging Area
- Helispot
- Incident Command Post
- Uncontrolled Fire Edge
- Completed Dozer Line
- Completed Line
- Hand Line

1	2	3	4	5
6	7	8	9	10
11	12	13	14	15





118°12'0"W

118°11'0"W

118°10'0"W

118°9'0"W

118°8'0"W

# CREEK FIRE

## Incident Action Plan Map

CA-LAC-362189

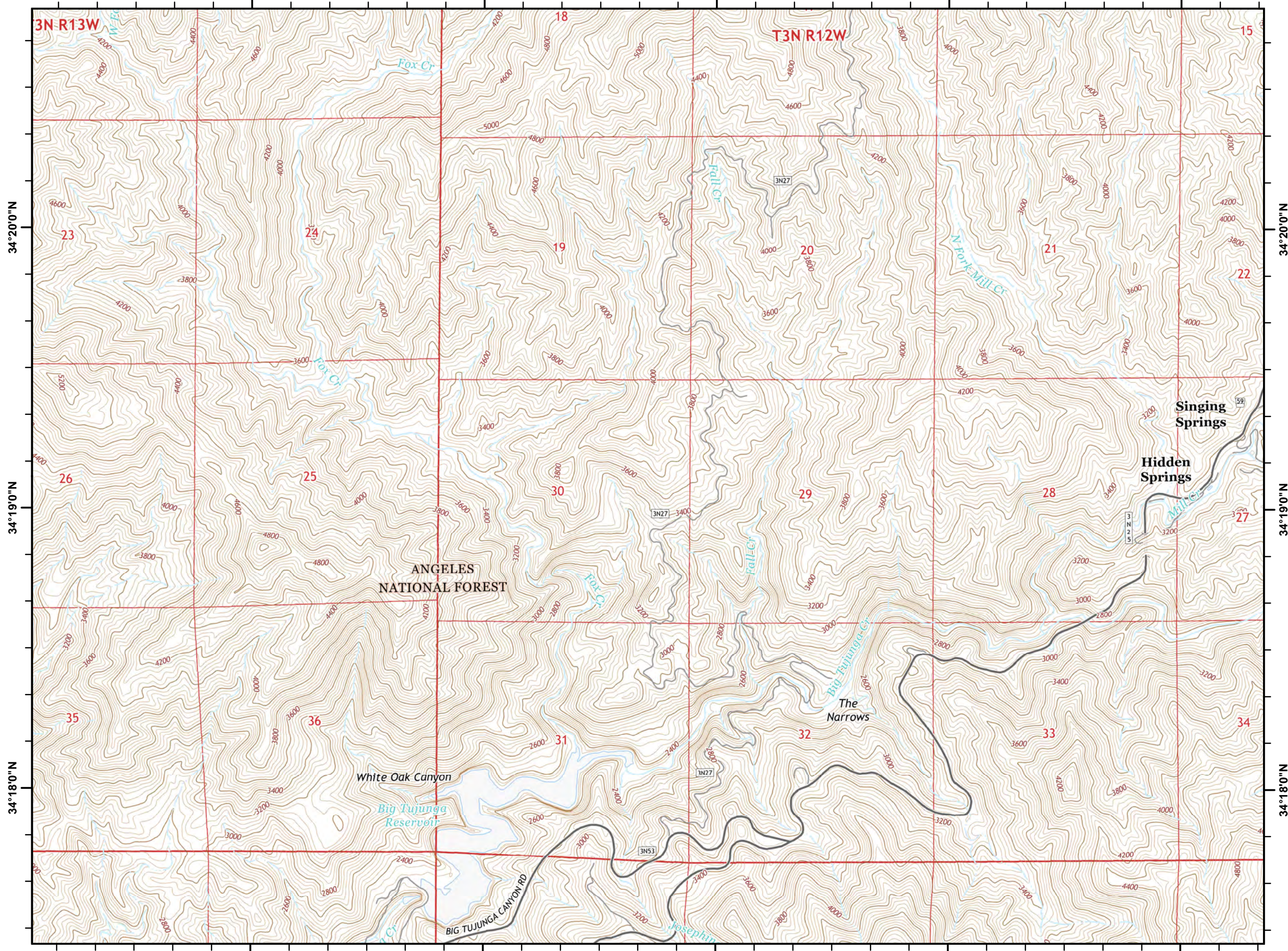
Dec 7, 2017

Page 10 of 15



- Branch
- Division
- Drop Point
- Staging Area
- Helispot
- Incident Command Post
- Uncontrolled Fire Edge
- Completed Dozer Line
- Completed Line
- Hand Line

1	2	3	4	5
6	7	8	9	10
11	12	13	14	15



118°12'0"W

118°11'0"W

118°10'0"W

118°9'0"W

118°8'0"W

34°20'0"N

34°20'0"N

34°19'0"N

34°19'0"N

34°18'0"N

34°18'0"N



118°32'0"W

118°31'0"W

118°30'0"W

118°29'0"W

118°28'0"W

34°17'0"N

34°17'0"N

34°16'0"N

34°16'0"N

34°15'0"N

34°15'0"N

118°32'0"W

118°31'0"W

118°30'0"W

118°29'0"W

118°28'0"W

# CREEK FIRE

## Incident Action Plan Map

CA-LAC-362189

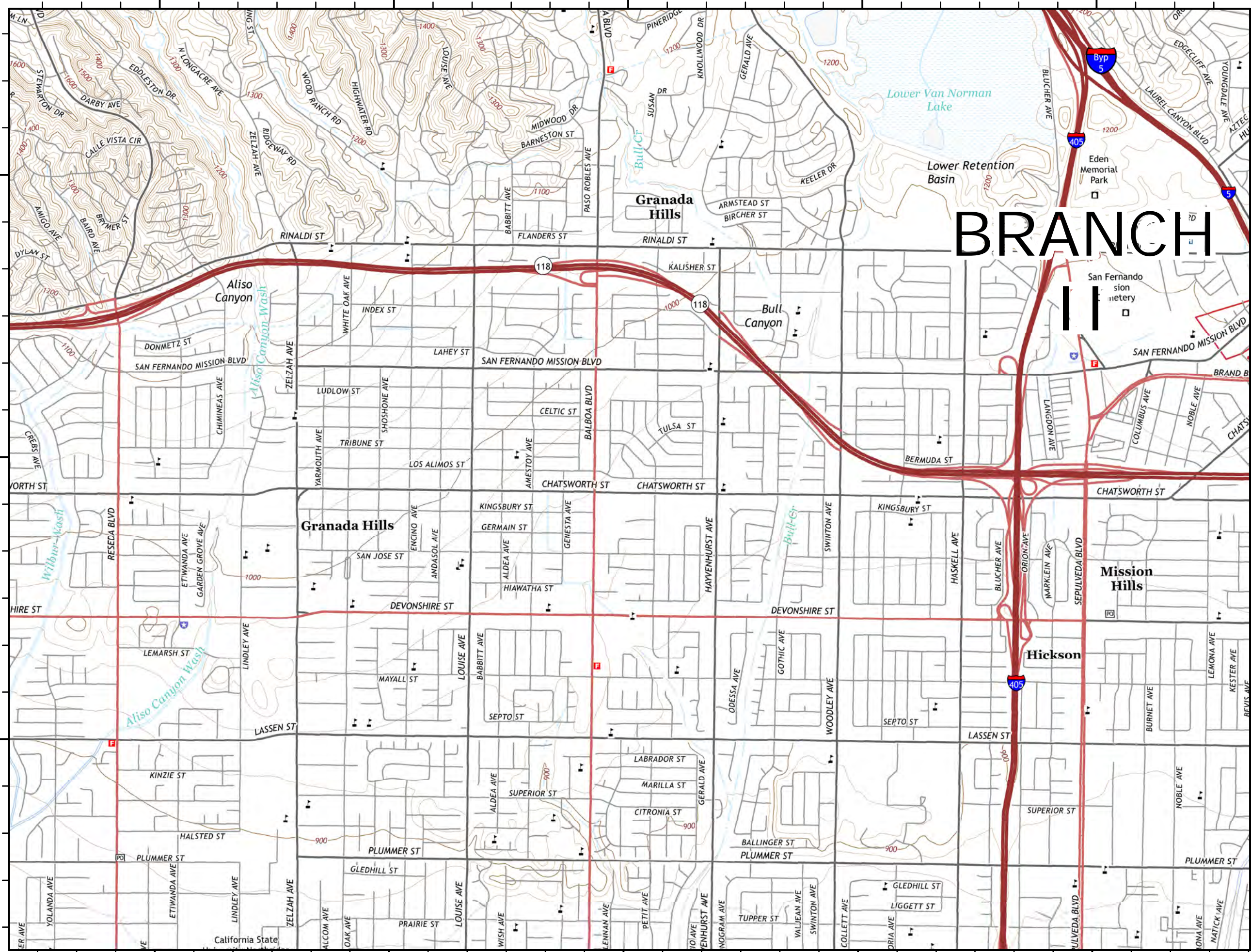
Dec 7, 2017

Page 11 of 15



- Branch
- Division
- Drop Point
- Staging Area
- Helispot
- Incident Command Post
- Uncontrolled Fire Edge
- Completed Dozer Line
- Completed Line
- Hand Line

1	2	3	4	5
6	7	8	9	10
11	12	13	14	15



# BRANCH



118°27'0"W

118°26'0"W

118°25'0"W

118°24'0"W

118°23'0"W

# CREEK FIRE

## Incident Action Plan Map

CA-LAC-362189

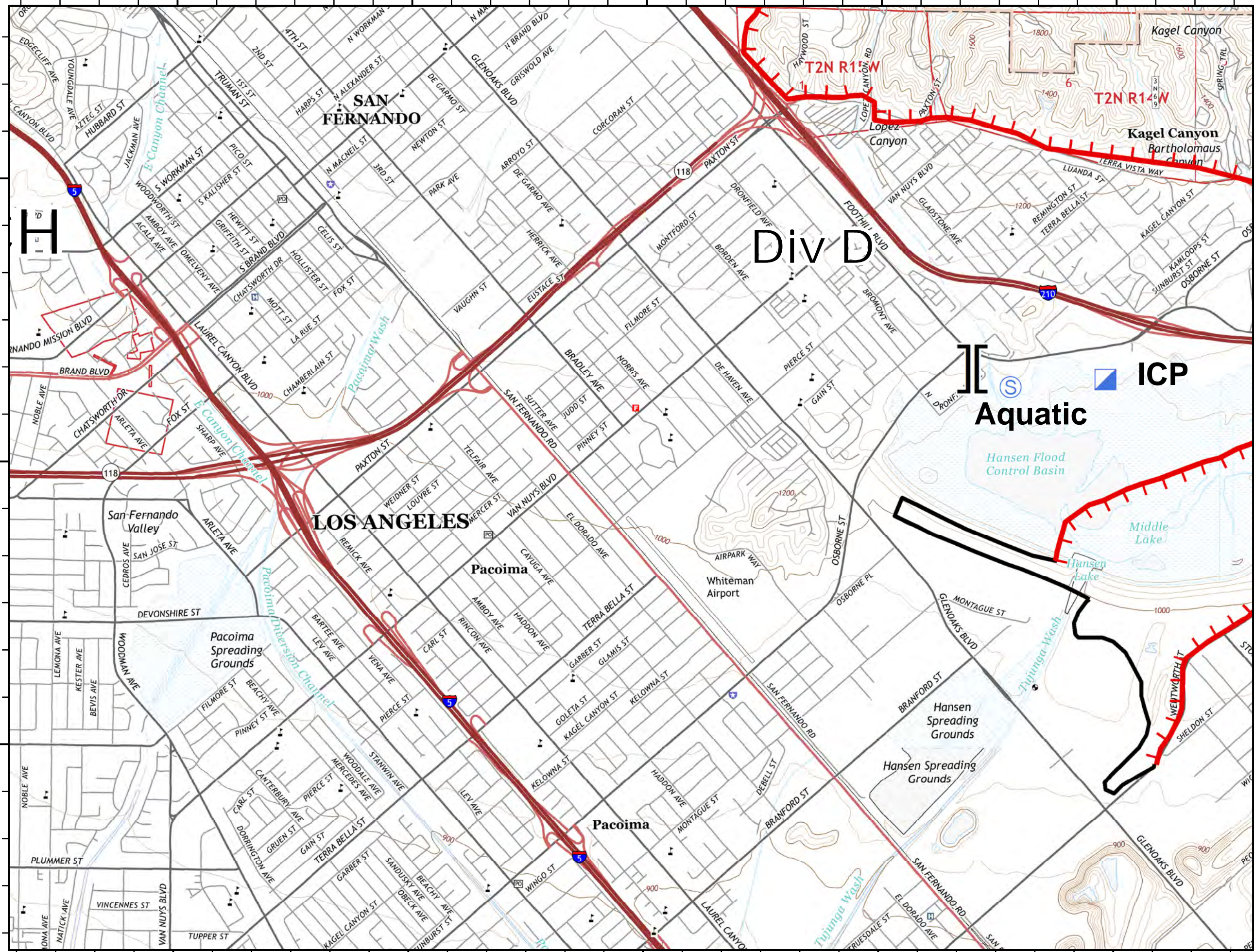
Dec 7, 2017

Page 12 of 15



- Branch
- Division
- Drop Point
- Staging Area
- Helispot
- Incident Command Post
- Uncontrolled Fire Edge
- Completed Dozer Line
- Completed Line
- Hand Line

1	2	3	4	5
6	7	8	9	10
11	12	13	14	15



# Div D

# ICP Aquatic

# LOS ANGELES

# Pacoima

# Pacoima

# H



118°22'0"W

118°21'0"W

118°20'0"W

118°19'0"W

118°18'0"W

34°17'0"N

34°16'0"N

34°15'0"N

34°17'0"N

34°16'0"N

34°15'0"N

118°22'0"W

118°21'0"W

118°20'0"W

118°19'0"W

118°18'0"W

# CREEK FIRE

## Incident Action Plan Map

CA-LAC-362189

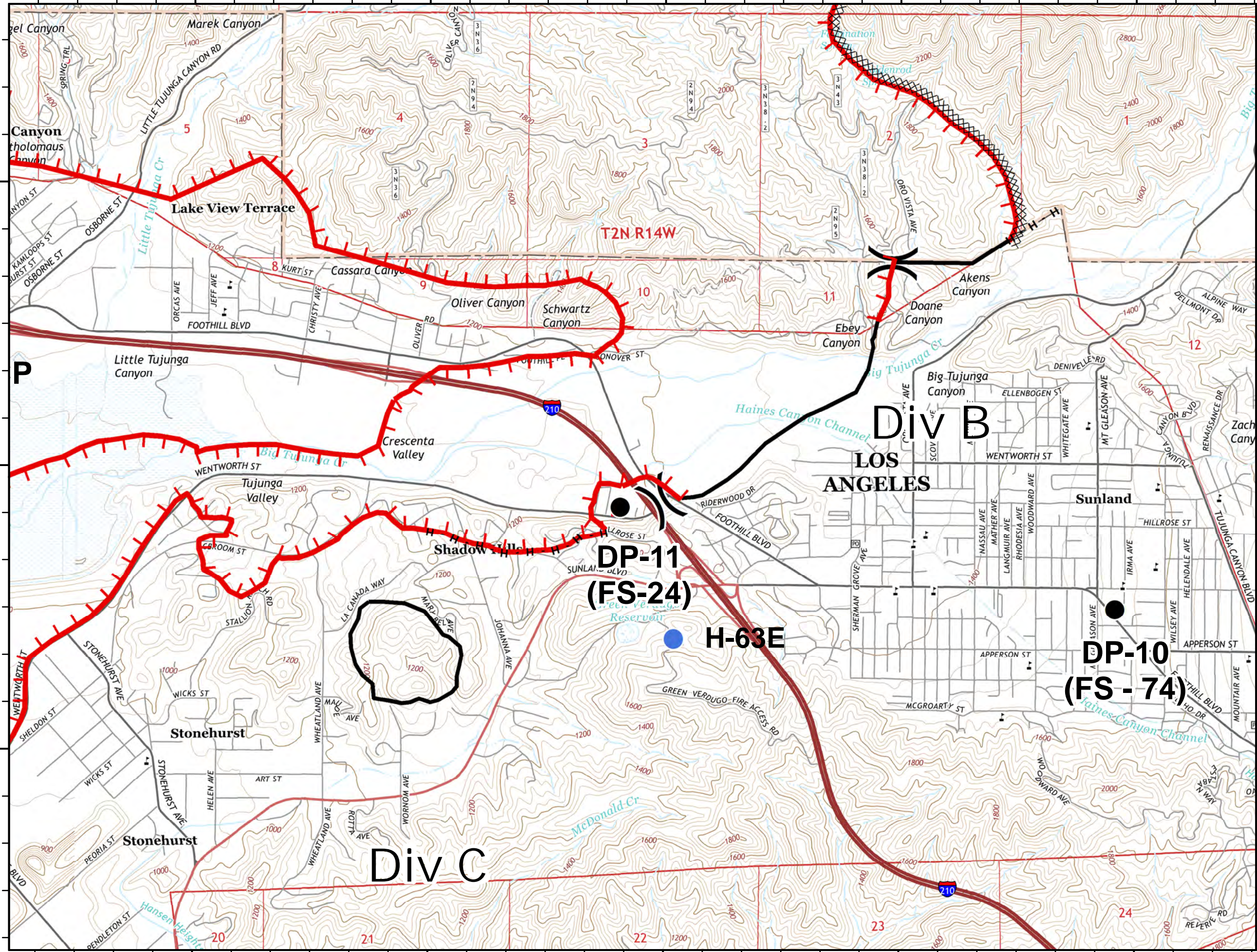
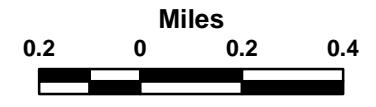
Dec 7, 2017

Page 13 of 15



- Branch
- Division
- Drop Point
- Staging Area
- Helispot
- Incident Command Post
- Uncontrolled Fire Edge
- Completed Dozer Line
- Completed Line
- Hand Line

1	2	3	4	5
6	7	8	9	10
11	12	13	14	15





118°17'0"W

118°16'0"W

118°15'0"W

118°14'0"W

118°13'0"W

34°17'0"N

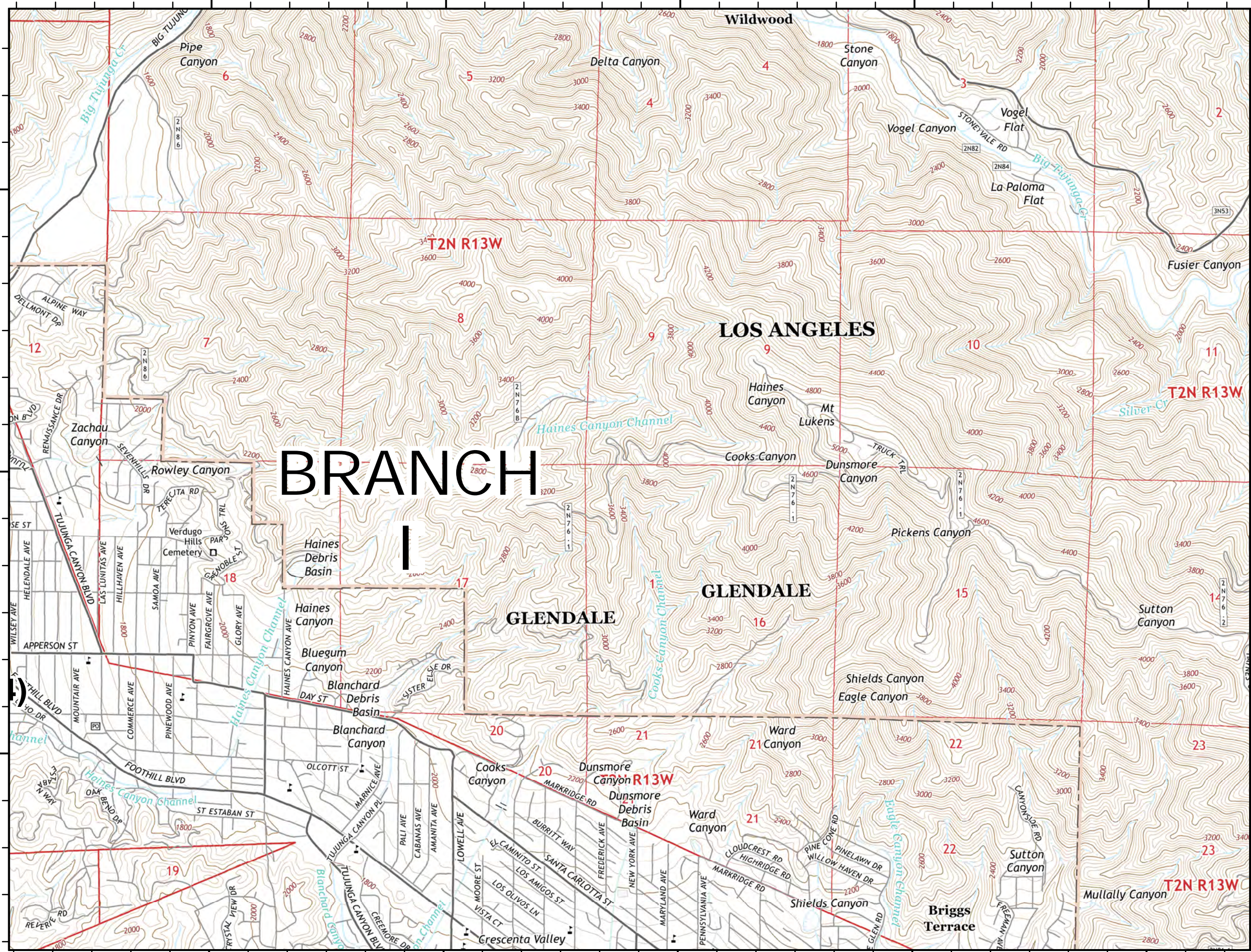
34°16'0"N

34°15'0"N

34°17'0"N

34°16'0"N

34°15'0"N



# CREEK FIRE

## Incident Action Plan Map

CA-LAC-362189

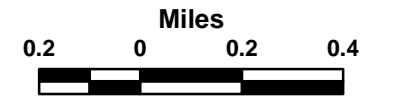
Dec 7, 2017

Page 14 of 15



- Branch
- Division
- Drop Point
- Staging Area
- Helispot
- Incident Command Post
- Uncontrolled Fire Edge
- Completed Dozer Line
- Completed Line
- Hand Line

1	2	3	4	5
6	7	8	9	10
11	12	13	14	15





118°12'0"W

118°11'0"W

118°10'0"W

118°9'0"W

118°8'0"W

34°17'0"N

34°17'0"N

34°16'0"N

34°16'0"N

34°15'0"N

34°15'0"N

118°12'0"W

118°11'0"W

118°10'0"W

118°9'0"W

118°8'0"W

# CREEK FIRE

## Incident Action Plan Map

CA-LAC-362189

Dec 7, 2017

Page 15 of 15



- Branch
- Division
- Drop Point
- Staging Area
- Helispot
- Incident Command Post
- Uncontrolled Fire Edge
- Completed Dozer Line
- Completed Line
- Hand Line

1	2	3	4	5
6	7	8	9	10
11	12	13	14	15

