

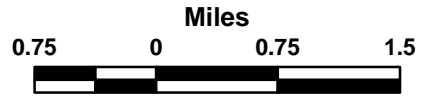
# CREEK FIRE

## Incident Action Plan Map Index Grid

CA-LAC-362189  
Dec 9, 2017



- Branch
- Division
- Drop Point
- Staging Area
- Helispot
- Incident Command Post
- Uncontrolled Fire Edge
- Completed Line
- Completed Dozer Line
- Hand Line
- Road as Completed Line



118°27'0"W

118°26'0"W

118°25'0"W

118°24'0"W

118°23'0"W

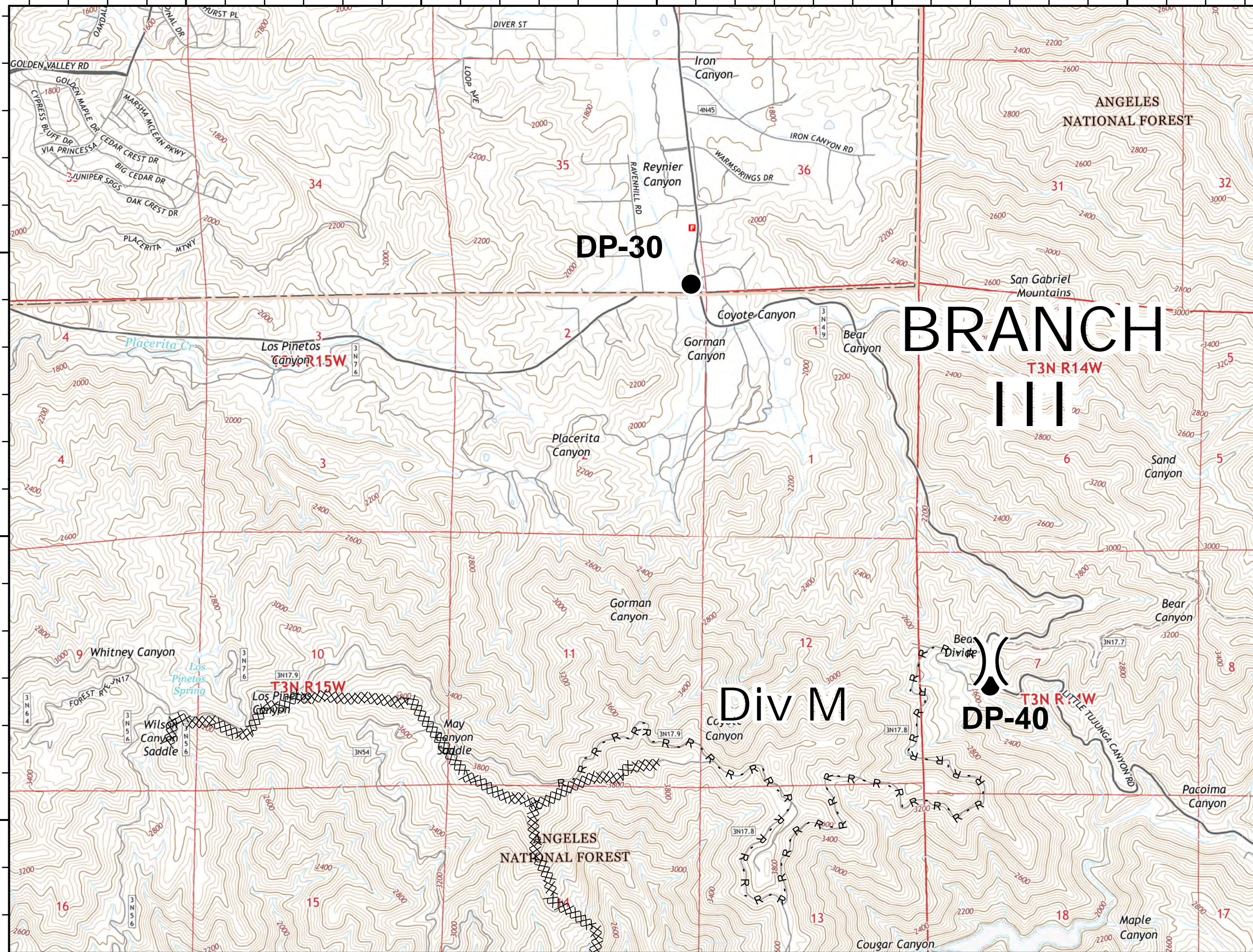
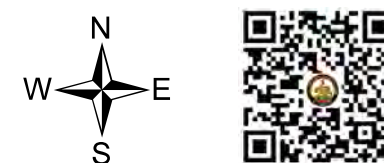
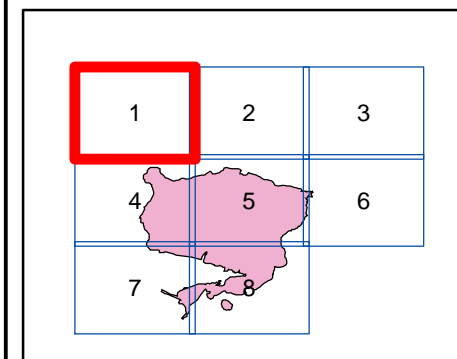
# CREEK FIRE Incident Action Plan Map

CA-LAC-362189  
Dec 9, 2017

Page 1 of 8



- [[ Branch
- ) ( Division
- Drop Point
- ⊙ Staging Area
- Helispot
- ▣ Incident Command Post
- ┌ Uncontrolled Fire Edge
- XXXXX Completed Dozer Line
- Completed Line
- H - Hand Line
- R - Road as Completed Line



34°23'0"N

34°23'0"N

34°22'0"N

34°22'0"N

34°21'0"N

34°21'0"N

118°27'0"W

118°26'0"W

118°25'0"W

118°24'0"W

118°23'0"W

118°22'0"W

118°21'0"W

118°20'0"W

118°19'0"W

118°18'0"W

# CREEK FIRE

## Incident Action Plan Map

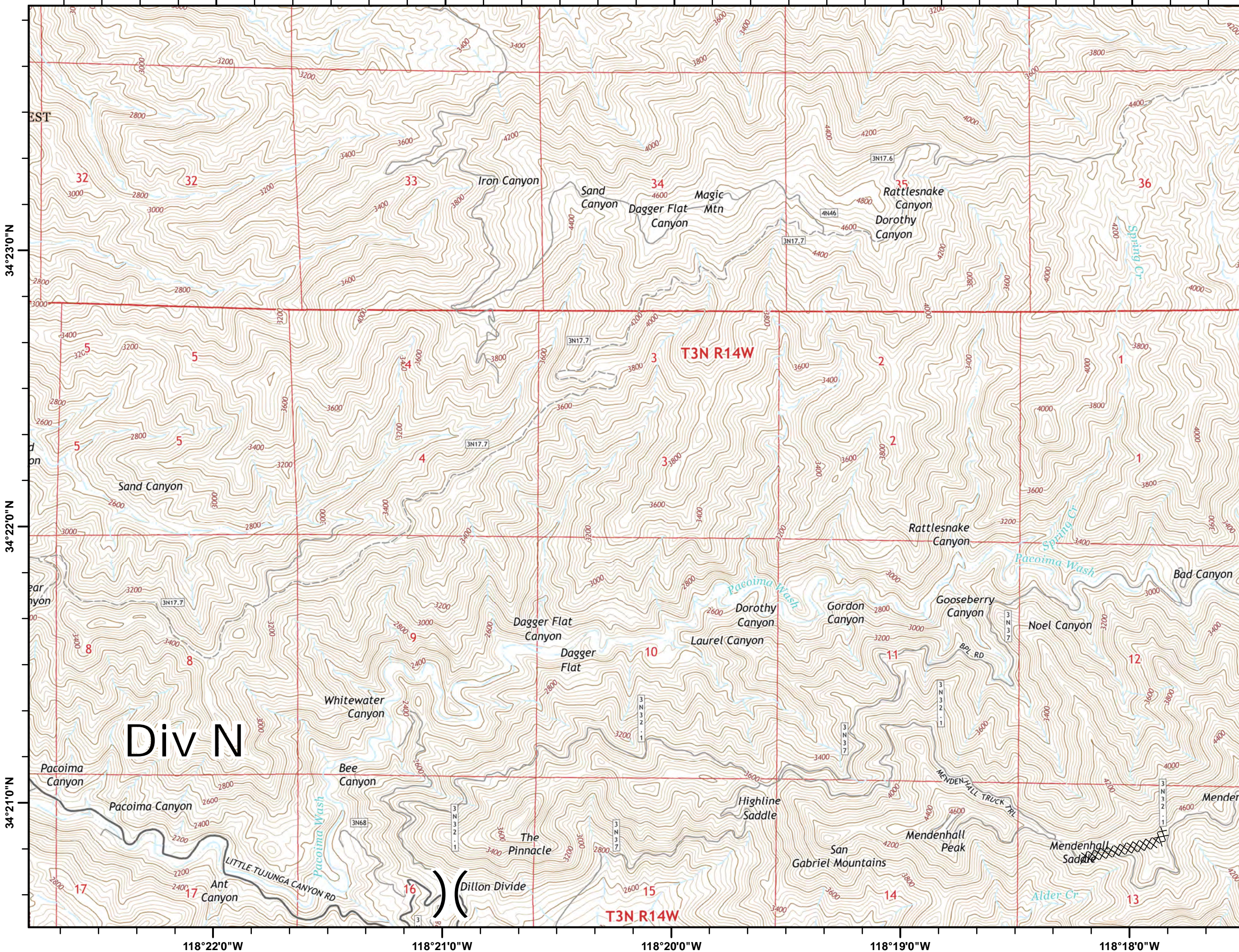
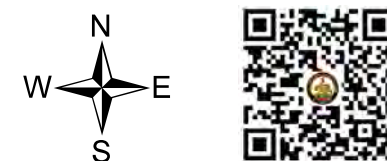
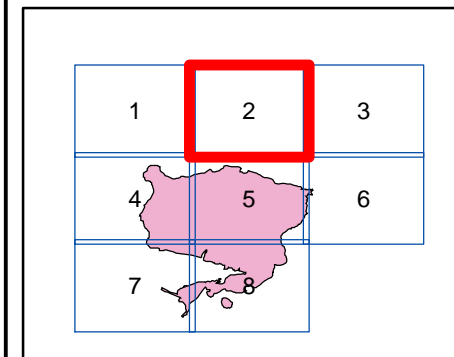
CA-LAC-362189

Dec 9, 2017

Page 2 of 8



- Branch
- Division
- Drop Point
- Staging Area
- Helispot
- Incident Command Post
- Uncontrolled Fire Edge
- Completed Dozer Line
- Completed Line
- Hand Line
- Road as Completed Line



# Div N

### T3N R14W

### T3N R14W

118°17'0"W

118°16'0"W

118°15'0"W

118°14'0"W

118°13'0"W

34°23'0"N

34°23'0"N

34°22'0"N

34°22'0"N

34°21'0"N

34°21'0"N

118°17'0"W

118°16'0"W

118°15'0"W

118°14'0"W

118°13'0"W

# CREEK FIRE

## Incident Action Plan Map

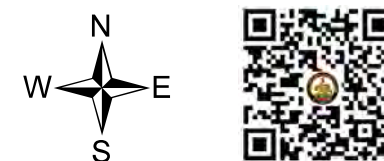
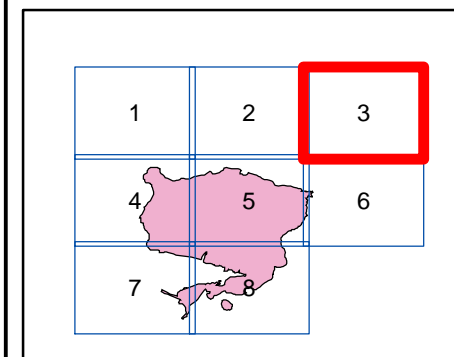
CA-LAC-362189

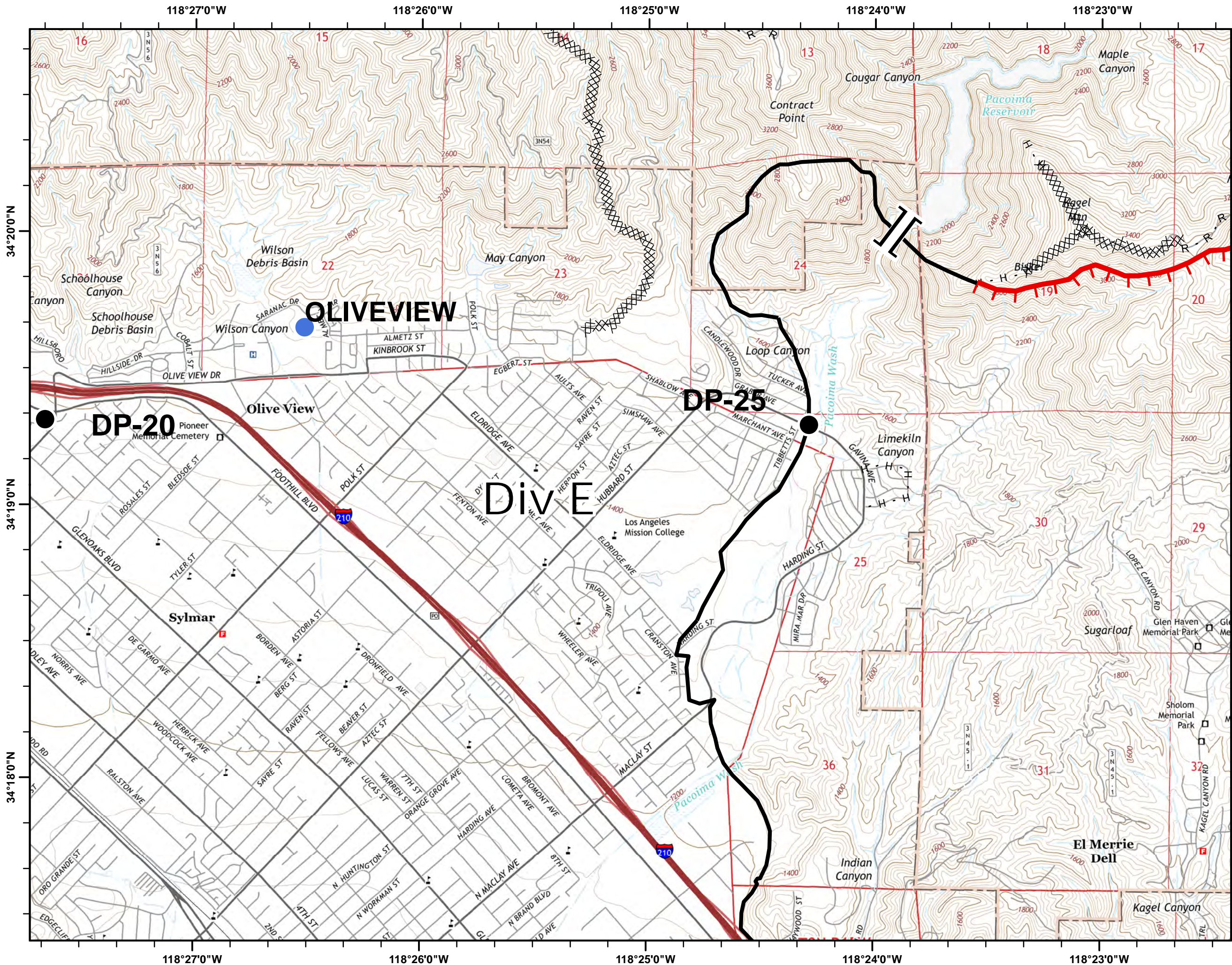
Dec 9, 2017

Page 3 of 8



- Branch
- Division
- Drop Point
- Staging Area
- Helispot
- Incident Command Post
- Uncontrolled Fire Edge
- Completed Dozer Line
- Completed Line
- Hand Line
- Road as Completed Line

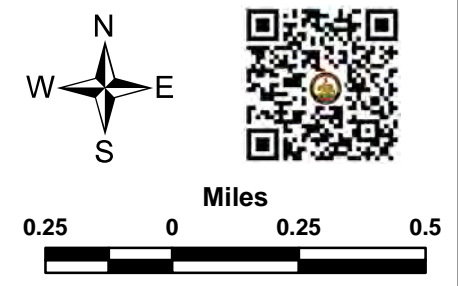
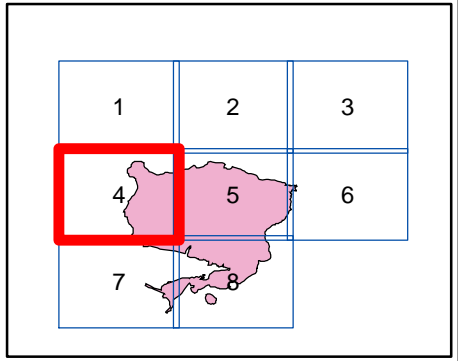




**CREEK FIRE**  
**Incident Action Plan Map**  
 CA-LAC-362189  
 Dec 9, 2017



- Branch
- Division
- Drop Point
- Staging Area
- Helispot
- Incident Command Post
- Uncontrolled Fire Edge
- Completed Dozer Line
- Completed Line
- Hand Line
- Road as Completed Line



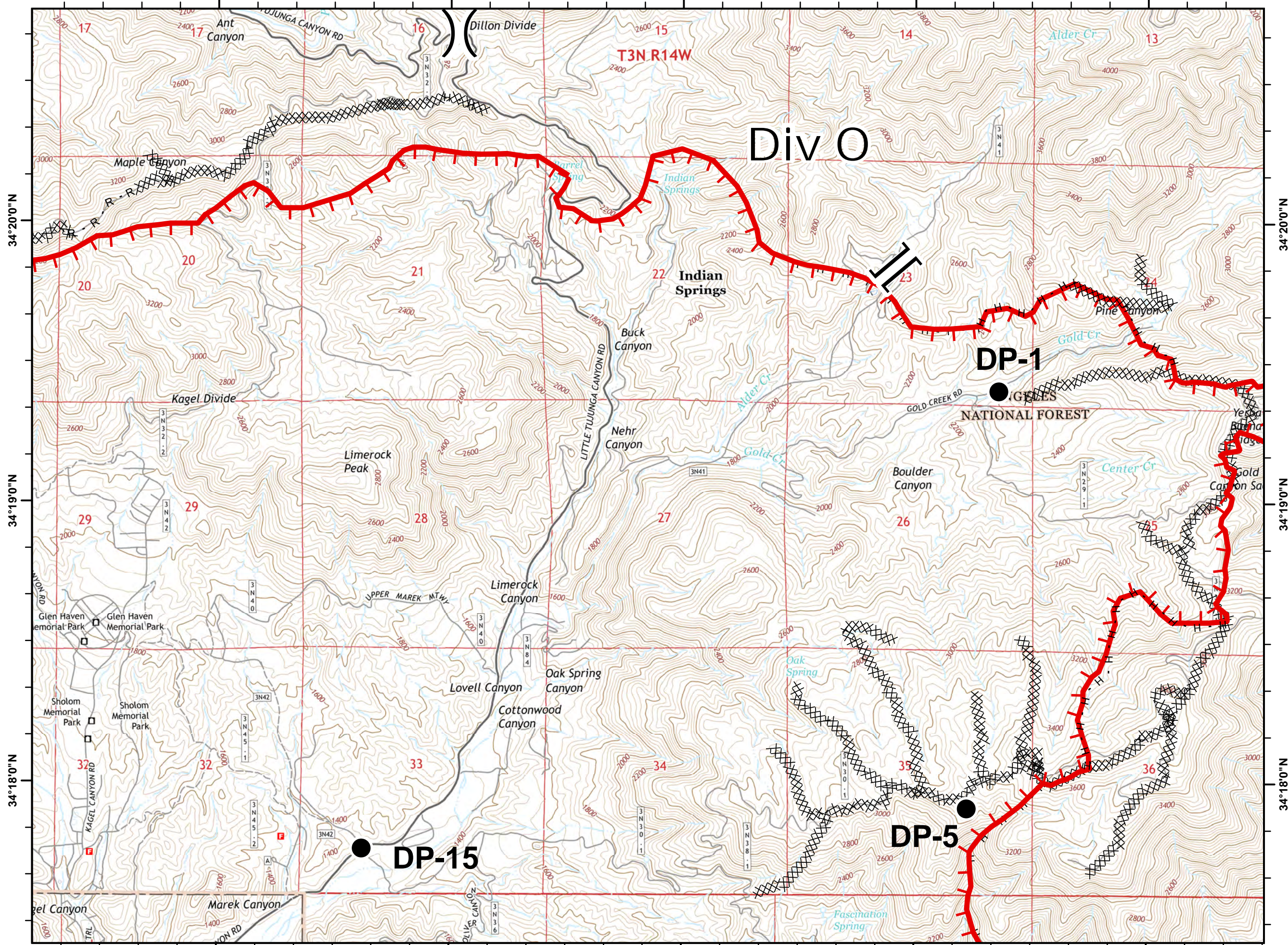
118°22'0"W

118°21'0"W

118°20'0"W

118°19'0"W

118°18'0"W

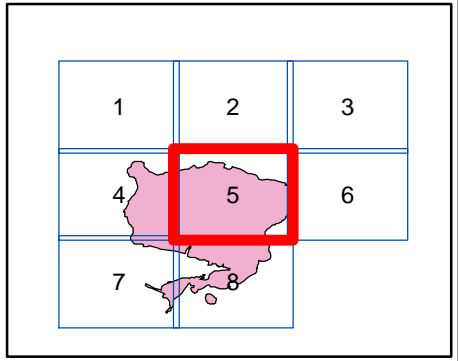


**CREEK FIRE**  
 Incident Action Plan Map  
 CA-LAC-362189  
 Dec 9, 2017

Page 5 of 8



- Branch
- Division
- Drop Point
- Staging Area
- Helispot
- Incident Command Post
- Uncontrolled Fire Edge
- Completed Dozer Line
- Completed Line
- Hand Line
- Road as Completed Line



North arrow and scale bar.

Miles  
 0.25 0 0.25 0.5

118°17'0"W

118°16'0"W

118°15'0"W

118°14'0"W

118°13'0"W

# CREEK FIRE

## Incident Action Plan Map

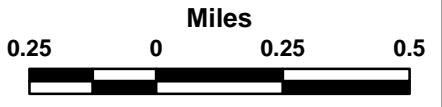
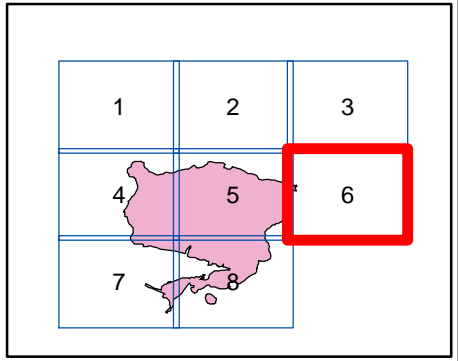
CA-LAC-362189

Dec 9, 2017

Page 6 of 8



- Branch
- Division
- Drop Point
- Staging Area
- Helispot
- Incident Command Post
- Uncontrolled Fire Edge
- Completed Dozer Line
- Completed Line
- Hand Line
- Road as Completed Line



118°27'0"W

118°26'0"W

118°25'0"W

118°24'0"W

118°23'0"W

# CREEK FIRE

## Incident Action Plan Map

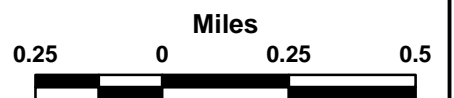
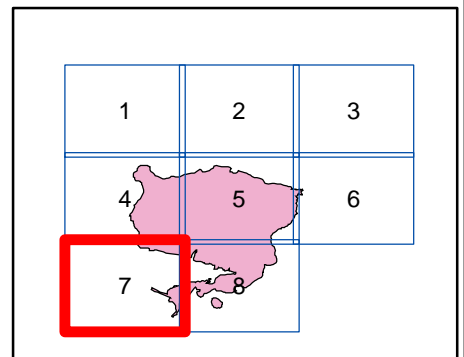
CA-LAC-362189

Dec 9, 2017

Page 7 of 8



- Branch
- Division
- Drop Point
- Staging Area
- Helispot
- Incident Command Post
- Uncontrolled Fire Edge
- Completed Dozer Line
- Completed Line
- Hand Line
- Road as Completed Line



# BRANCH II

# Div D

# Aquatic ICP

# LOS ANGELES

# Pacoima

# Pacoima

34°17'0"N  
34°16'0"N  
34°15'0"N

34°17'0"N  
34°16'0"N  
34°15'0"N

118°27'0"W

118°26'0"W

118°25'0"W

118°24'0"W

118°23'0"W



118°22'0"W

118°21'0"W

118°20'0"W

118°19'0"W

118°18'0"W

34°17'0"N

34°17'0"N

34°16'0"N

34°16'0"N

34°15'0"N

34°15'0"N

118°22'0"W

118°21'0"W

118°20'0"W

118°19'0"W

118°18'0"W

# CREEK FIRE

## Incident Action Plan Map

CA-LAC-362189

Dec 9, 2017

Page 8 of 8



- Branch
- Division
- Drop Point
- Staging Area
- Helispot
- Incident Command Post
- Uncontrolled Fire Edge
- Completed Dozer Line
- Completed Line
- Hand Line
- Road as Completed Line

