

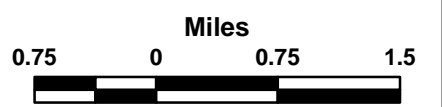
CREEK FIRE

Incident Action Plan Map Index Grid

CA-LAC-362189
Dec 10, 2017



- Branch
- Division
- Drop Point
- Staging Area
- Helispot
- Incident Command Post
- Uncontrolled Fire Edge
- Completed Line
- Completed Dozer Line
- Hand Line
- Road as Completed Line



118°27'0"W

118°26'0"W

118°25'0"W

118°24'0"W

118°23'0"W

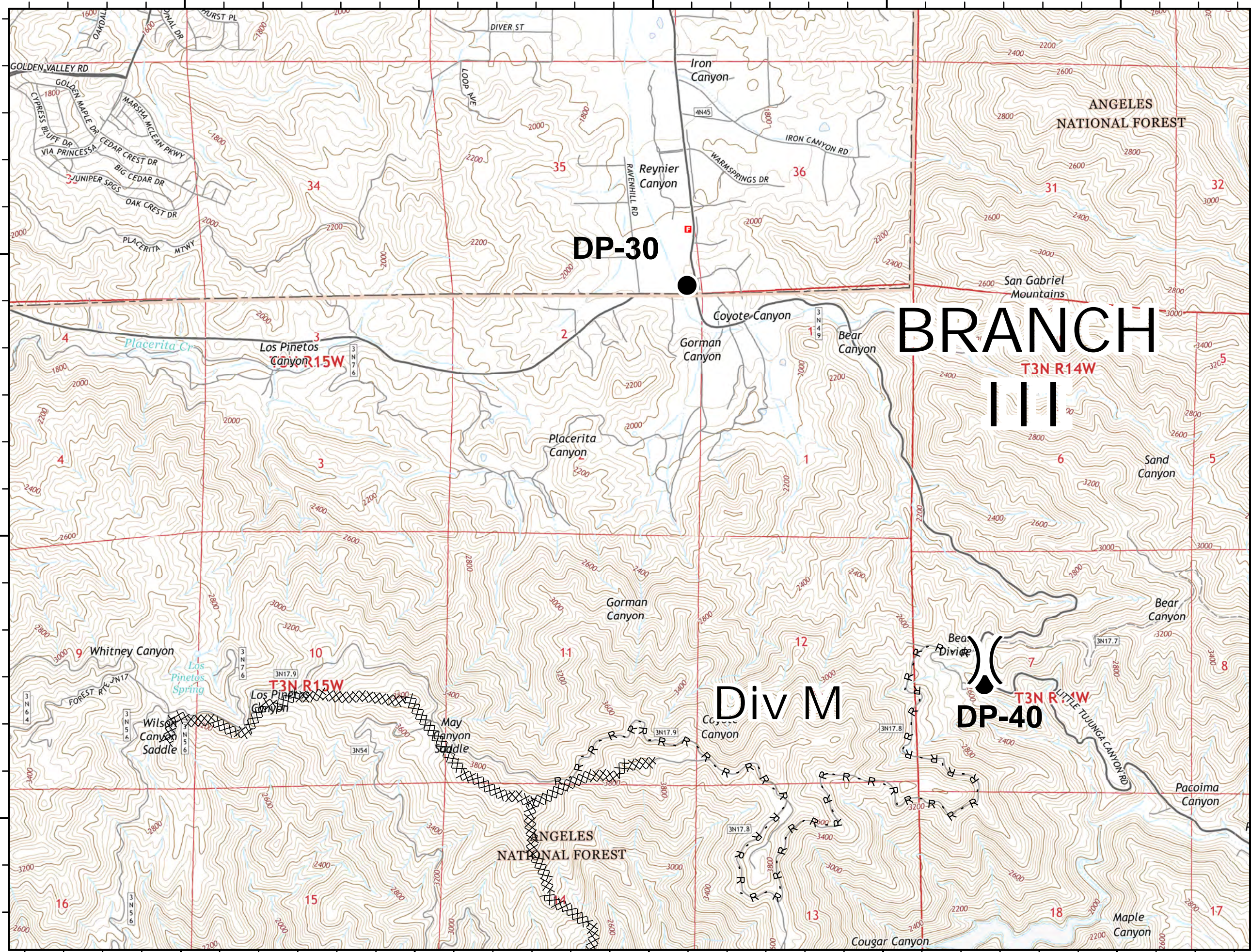
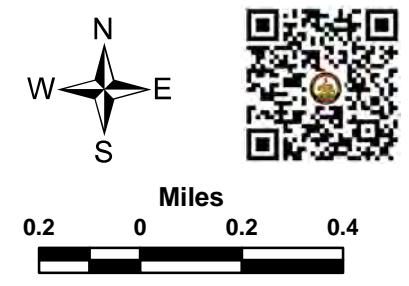
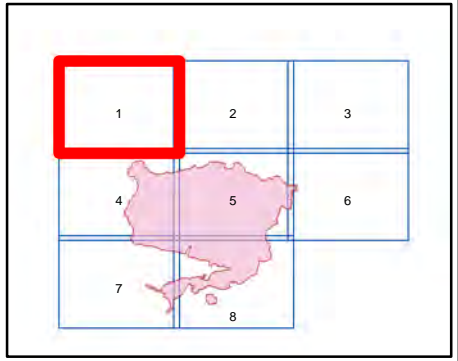
CREEK FIRE Incident Action Plan Map

CA-LAC-362189
Dec 10, 2017

Page 1 of 8



- Branch
- Division
- Drop Point
- Staging Area
- Helispot
- Incident Command Post
- Uncontrolled Fire Edge
- Completed Dozer Line
- Completed Line
- Hand Line
- Road as Completed Line



DP-30

BRANCH

T3N R14W

III

Div M

DP-40

T3N R15W

T3N R14W

T3N R15W

T3N R14W

T3N R15W

T3N R14W

T3N R15W

T3N R14W

T3N R15W

T3N R14W

T3N R15W

T3N R14W

T3N R15W

T3N R14W

T3N R15W

T3N R14W

T3N R15W

T3N R14W

T3N R15W

T3N R14W

T3N R15W

T3N R14W

T3N R15W

T3N R14W

T3N R15W

T3N R14W

T3N R15W

T3N R14W

T3N R15W

T3N R14W

T3N R15W

T3N R14W

T3N R15W

T3N R14W

T3N R15W

T3N R14W

T3N R15W

T3N R14W

T3N R15W

T3N R14W

T3N R15W

T3N R14W

T3N R15W

T3N R14W

T3N R15W

T3N R14W

T3N R15W

T3N R14W

T3N R15W

T3N R14W

T3N R15W

T3N R14W

T3N R15W

T3N R14W

T3N R15W

T3N R14W

T3N R15W

T3N R14W

T3N R15W

T3N R14W

T3N R15W

T3N R14W

T3N R15W

T3N R14W

T3N R15W

T3N R14W

T3N R15W

T3N R14W

T3N R15W

T3N R14W

T3N R15W

T3N R14W

T3N R15W

T3N R14W

T3N R15W

T3N R14W

T3N R15W

T3N R14W

T3N R15W

T3N R14W

T3N R15W

T3N R14W

T3N R15W

T3N R14W

T3N R15W

T3N R14W

T3N R15W

T3N R14W

T3N R15W

T3N R14W

T3N R15W

T3N R14W

T3N R15W

T3N R14W

T3N R15W

T3N R14W

T3N R15W

T3N R14W

T3N R15W

T3N R14W

T3N R15W

T3N R14W

T3N R15W

T3N R14W

T3N R15W

T3N R14W

T3N R15W

T3N R14W

T3N R15W

T3N R14W

T3N R15W

T3N R14W

T3N R15W

T3N R14W

T3N R15W

T3N R14W

T3N R15W

T3N R14W

T3N R15W

T3N R14W

T3N R15W

T3N R14W

T3N R15W

T3N R14W

T3N R15W

T3N R14W

T3N R15W

T3N R14W

T3N R15W

T3N R14W

T3N R15W

T3N R14W

T3N R15W

T3N R14W

T3N R15W

T3N R14W

T3N R15W

T3N R14W

T3N R15W

T3N R14W

T3N R15W

T3N R14W

T3N R15W

T3N R14W

T3N R15W

T3N R14W

T3N R15W

T3N R14W

T3N R15W

T3N R14W

T3N R15W

T3N R14W

T3N R15W

T3N R14W

T3N R15W

T3N R14W

T3N R15W

T3N R14W

T3N R15W

T3N R14W

T3N R15W

T3N R14W

T3N R15W

T3N R14W

T3N R15W

T3N R14W

T3N R15W

T3N R14W

T3N R15W

T3N R14W

T3N R15W

T3N R14W

T3N R15W

T3N R14W

T3N R15W

T3N R14W

T3N R15W

T3N R14W

T3N R15W

T3N R14W

T3N R15W

T3N R14W

T3N R15W

T3N R14W

T3N R15W

T3N R14W

T3N R15W

T3N R14W

T3N R15W

T3N R14W

T3N R15W

T3N R14W

T3N R15W

T3N R14W

T3N R15W

T3N R14W

T3N R15W

T3N R14W

T3N R15W

T3N R14W

T3N R15W

T3N R14W

T3N R15W

T3N R14W

T3N R15W

T3N R14W

T3N R15W

T3N R14W

T3N R15W

T3N R14W

T3N R15W

T3N R14W

T3N R15W

T3N R14W

T3N R15W

T3N R14W

T3N R15W

T3N R14W

T3N R15W

T3N R14W

T3N R15W

T3N R14W

T3N R15W

T3N R14W

T3N R15W

T3N R14W

T3N R15W

T3N R14W

T3N R15W

T3N R14W

T3N R15W

T3N R14W

T3N R15W

T3N R14W

T3N R15W

T3N R14W

T3N R15W

T3N R14W

T3N R15W

T3N R14W

T3N R15W

T3N R14W

T3N R15W

T3N R14W

T3N R15W

T3N R14W

T3N R15W

T3N R14W

T3N R15W

T3N R14W

T3N R15W

T3N R14W

T3N R15W

T3N R14W

T3N R15W

T3N R14W

T3N R15W

T3N R14W

T3N R15W

T3N R14W

T3N R15W

T3N R14W

T3N R15W

T3N R14W

T3N R15W

T3N R14W

T3N R15W

T3N R14W

T3N R15W

T3N R14W

118°17'0"W

118°16'0"W

118°15'0"W

118°14'0"W

118°13'0"W

34°23'0"N

34°23'0"N

34°22'0"N

34°22'0"N

34°21'0"N

34°21'0"N

118°17'0"W

118°16'0"W

118°15'0"W

118°14'0"W

118°13'0"W

CREEK FIRE

Incident Action Plan Map

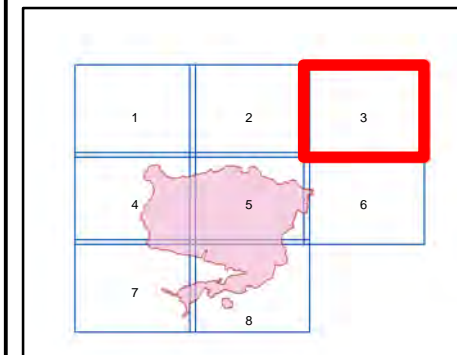
CA-LAC-362189

Dec 10, 2017

Page 3 of 8



- Branch
- Division
- Drop Point
- Staging Area
- Helispot
- Incident Command Post
- Uncontrolled Fire Edge
- Completed Dozer Line
- Completed Line
- Hand Line
- Road as Completed Line



118°22'0"W

118°21'0"W

118°20'0"W

118°19'0"W

118°18'0"W

34°20'0"N

34°19'0"N

34°18'0"N

34°20'0"N

34°19'0"N

34°18'0"N

118°22'0"W

118°21'0"W

118°20'0"W

118°19'0"W

118°18'0"W

CREEK FIRE

Incident Action Plan Map

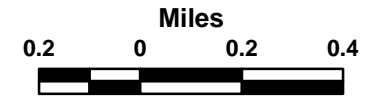
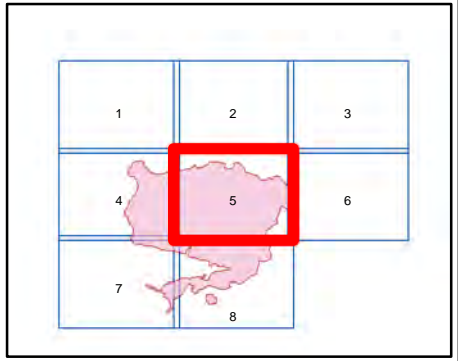
CA-LAC-362189

Dec 10, 2017

Page 5 of 8



- Branch
- Division
- Drop Point
- Staging Area
- Helispot
- Incident Command Post
- Uncontrolled Fire Edge
- Completed Dozer Line
- Completed Line
- Hand Line
- Road as Completed Line



Div O

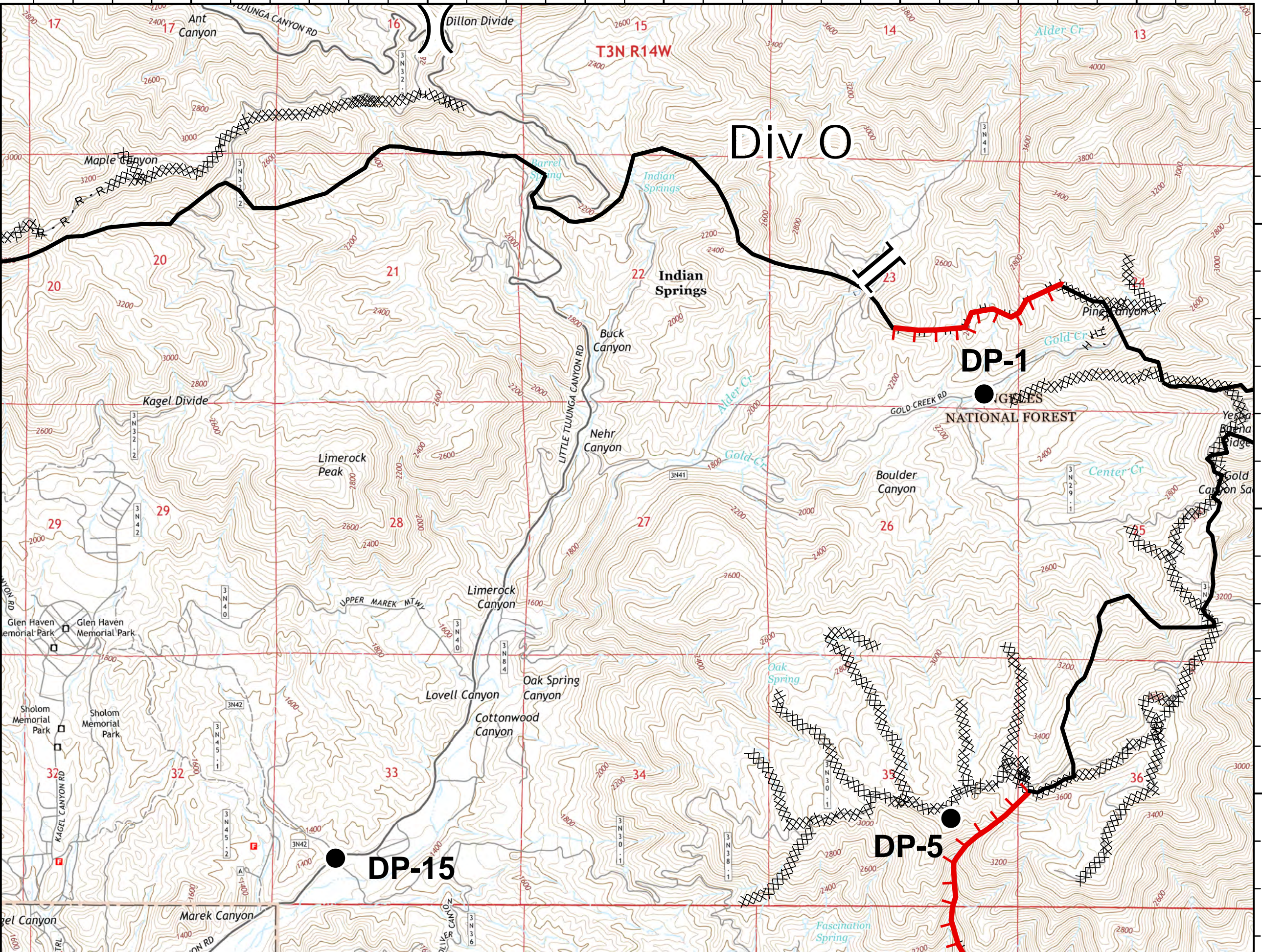
DP-1

DP-15

DP-5

T3N R14W

NATIONAL FOREST



118°17'0"W

118°16'0"W

118°15'0"W

118°14'0"W

118°13'0"W

CREEK FIRE

Incident Action Plan Map

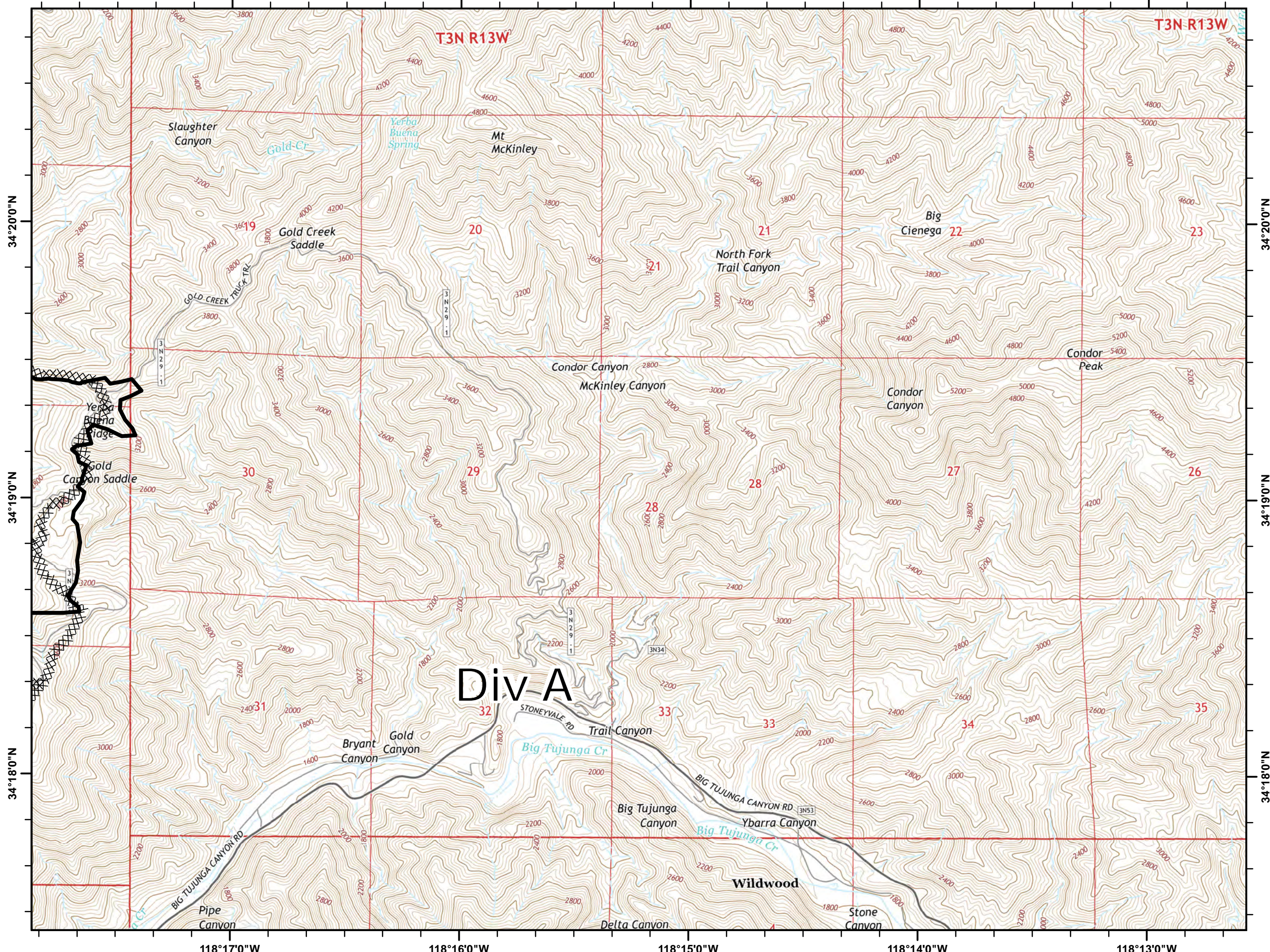
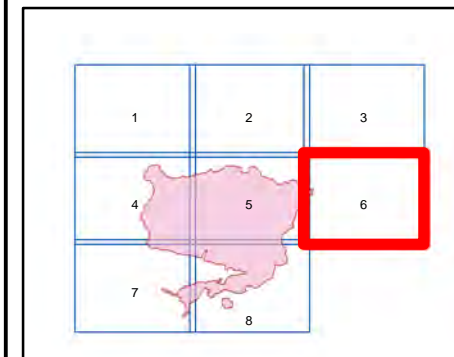
CA-LAC-362189

Dec 10, 2017

Page 6 of 8



- Branch
- Division
- Drop Point
- Staging Area
- Helispot
- Incident Command Post
- Uncontrolled Fire Edge
- Completed Dozer Line
- Completed Line
- Hand Line
- Road as Completed Line



34°20'0"N

34°20'0"N

34°19'0"N

34°19'0"N

34°18'0"N

34°18'0"N

118°17'0"W

118°16'0"W

118°15'0"W

118°14'0"W

118°13'0"W

118°27'0"W

118°26'0"W

118°25'0"W

118°24'0"W

118°23'0"W

CREEK FIRE

Incident Action Plan Map

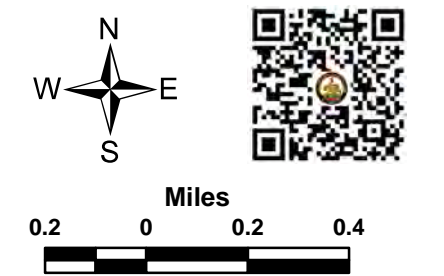
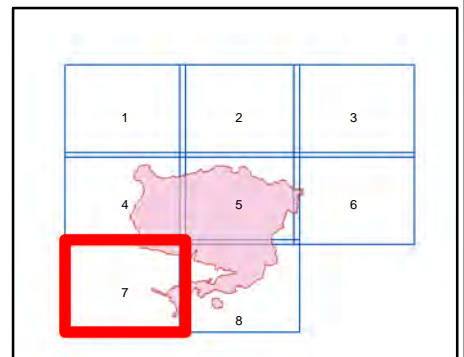
CA-LAC-362189

Dec 10, 2017

Page 7 of 8



- Branch
- Division
- Drop Point
- Staging Area
- Helispot
- Incident Command Post
- Uncontrolled Fire Edge
- Completed Dozer Line
- Completed Line
- Hand Line
- Road as Completed Line



BRANCH II

Div D

Aquatic ICP

LOS ANGELES

Pacoima

Pacoima

34°17'0"N

34°16'0"N

34°15'0"N

34°17'0"N

34°16'0"N

34°15'0"N

118°27'0"W

118°26'0"W

118°25'0"W

118°24'0"W

118°23'0"W

118°22'0"W

118°21'0"W

118°20'0"W

118°19'0"W

118°18'0"W

34°17'0"N

34°17'0"N

34°16'0"N

34°16'0"N

34°15'0"N

34°15'0"N

118°22'0"W

118°21'0"W

118°20'0"W

118°19'0"W

118°18'0"W

CREEK FIRE

Incident Action Plan Map

CA-LAC-362189

Dec 10, 2017

Page 8 of 8



- Branch
- Division
- Drop Point
- Staging Area
- Helispot
- Incident Command Post
- Uncontrolled Fire Edge
- Completed Dozer Line
- Completed Line
- Hand Line
- Road as Completed Line

