

118°28'0"W 118°27'0"W 118°26'0"W 118°25'0"W 118°24'0"W 118°23'0"W 118°22'0"W 118°21'0"W 118°20'0"W 118°19'0"W 118°18'0"W 118°17'0"W 118°16'0"W 118°15'0"W 118°14'0"W 118°13'0"W 118°12'0"W

34°24'0"N
34°23'0"N
34°22'0"N
34°21'0"N
34°20'0"N
34°19'0"N
34°18'0"N
34°17'0"N
34°16'0"N
34°15'0"N

34°24'0"N
34°23'0"N
34°22'0"N
34°21'0"N
34°20'0"N
34°19'0"N
34°18'0"N
34°17'0"N
34°16'0"N
34°15'0"N

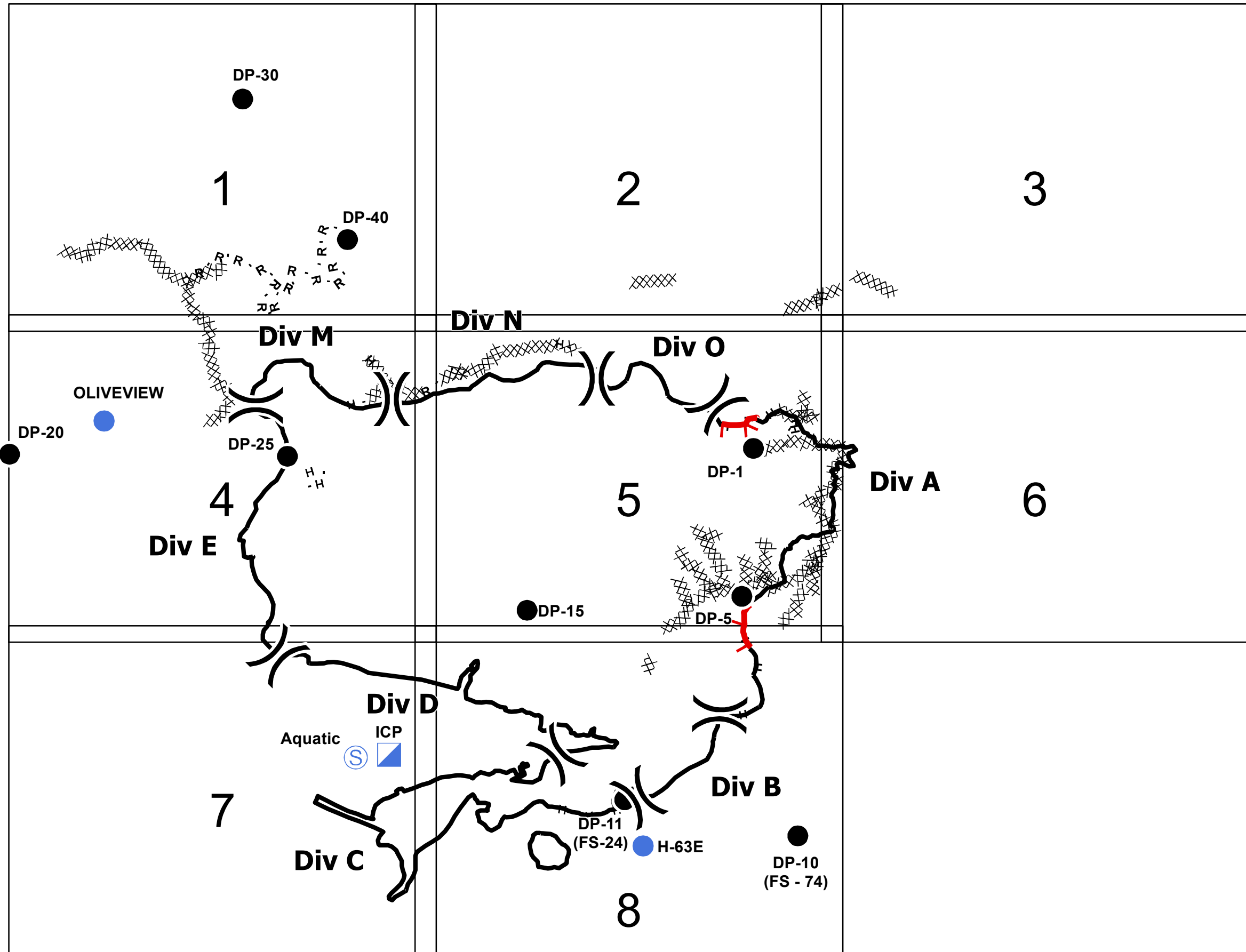


Incident Action Plan Map Index Grid

CREEK FIRE

CA-LAC-362189

12/11/17-12/15/17



- Branch
- Division
- Drop Point
- Staging Area
- Helispot
- Incident Command Post
- Uncontrolled Fire Edge
- Completed Line
- Completed Dozer Line
- Hand Line
- Road as Completed Line



118°28'0"W 118°27'0"W 118°26'0"W 118°25'0"W 118°24'0"W 118°23'0"W 118°22'0"W 118°21'0"W 118°20'0"W 118°19'0"W 118°18'0"W 118°17'0"W 118°16'0"W 118°15'0"W 118°14'0"W 118°13'0"W 118°12'0"W

118°27'0"W

118°26'0"W

118°25'0"W

118°24'0"W

118°23'0"W

34°23'0"N

34°23'0"N

34°22'0"N

34°22'0"N

34°21'0"N

34°21'0"N

118°27'0"W

118°26'0"W

118°25'0"W

118°24'0"W

118°23'0"W



Incident Action Plan Map

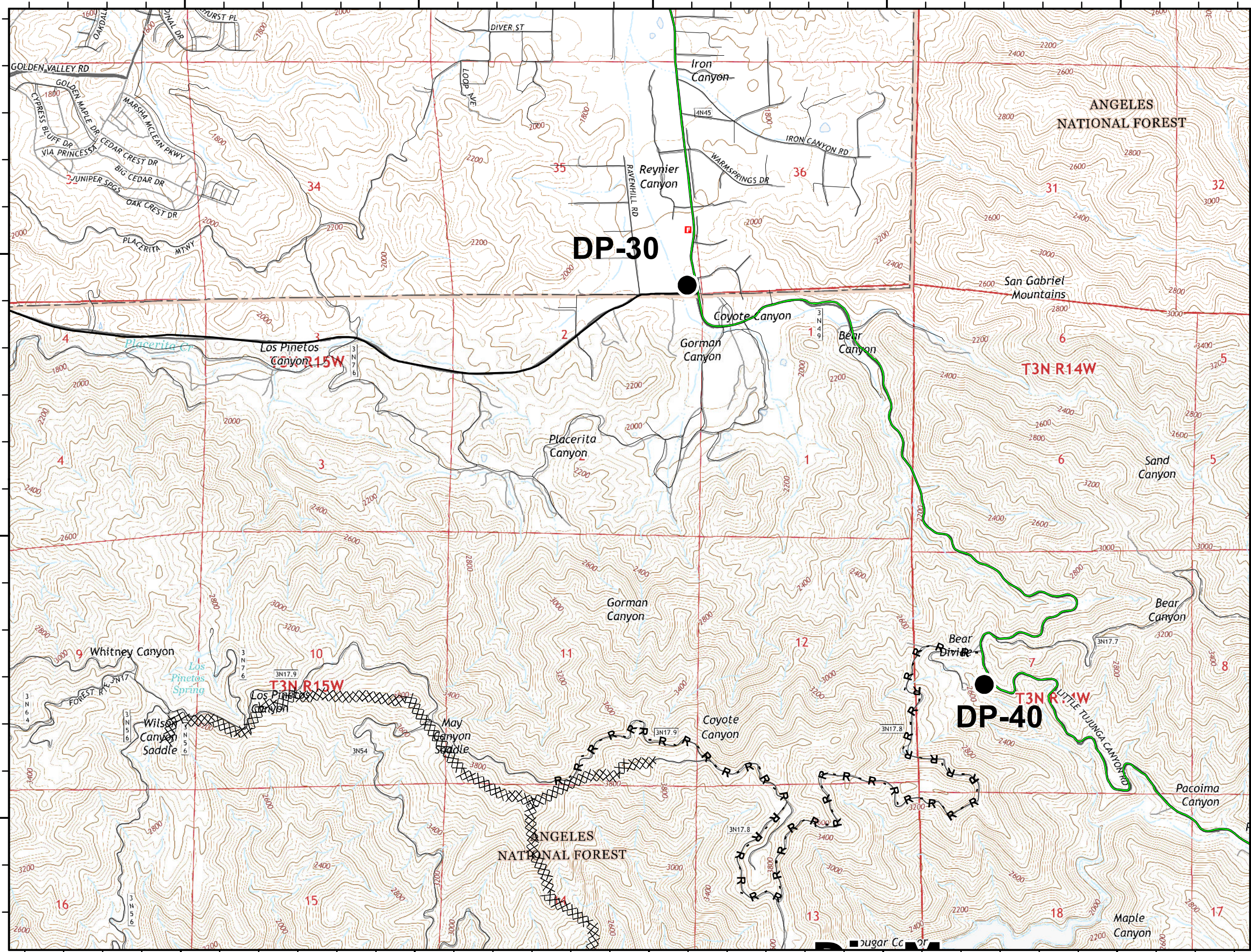
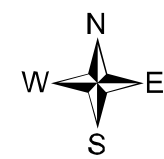
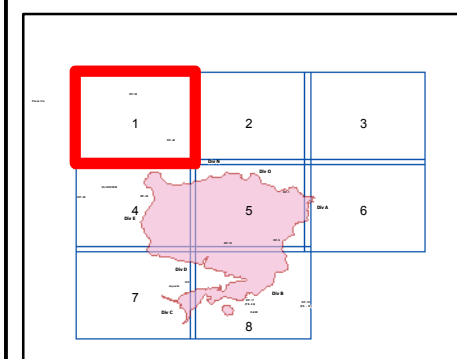
CREEK FIRE

CA-LAC-362189

12/11/17-12/15/17

Page 1 of 8

- Branch
- Division
- Drop Point
- Staging Area
- Helispot
- Incident Command Post
- Uncontrolled Fire Edge
- Completed Dozer Line
- Completed Line
- Hand Line
- Road as Completed Line



118°22'0"W

118°21'0"W

118°20'0"W

118°19'0"W

118°18'0"W



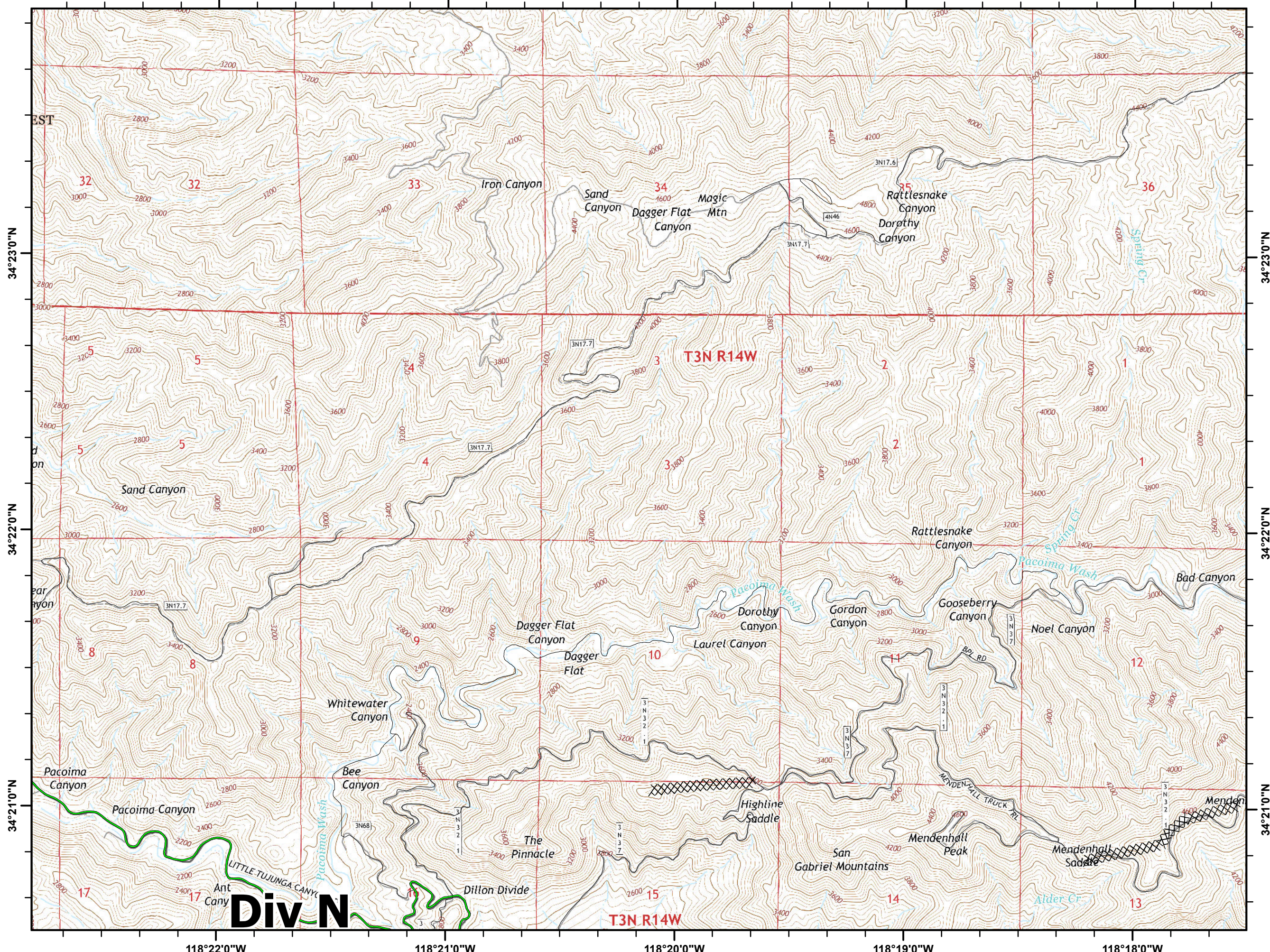
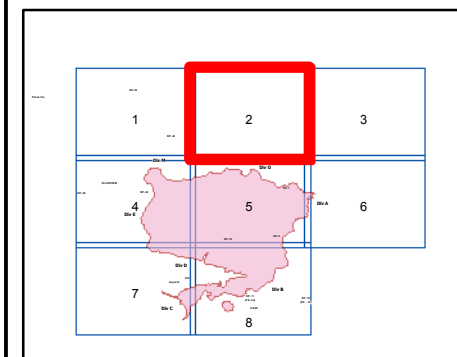
Incident Action Plan Map

CREEK FIRE

CA-LAC-362189
12/11/17-12/15/17

Page 2 of 8

- Branch
- Division
- Drop Point
- Staging Area
- Helispot
- Incident Command Post
- Uncontrolled Fire Edge
- Completed Dozer Line
- Completed Line
- Hand Line
- Road as Completed Line



Div N

118°22'0"W

118°21'0"W

118°20'0"W

118°19'0"W

118°18'0"W

118°17'0"W

118°16'0"W

118°15'0"W

118°14'0"W

118°13'0"W

34°23'0"N

34°23'0"N

34°22'0"N

34°22'0"N

34°21'0"N

34°21'0"N

118°17'0"W

118°16'0"W

118°15'0"W

118°14'0"W

118°13'0"W



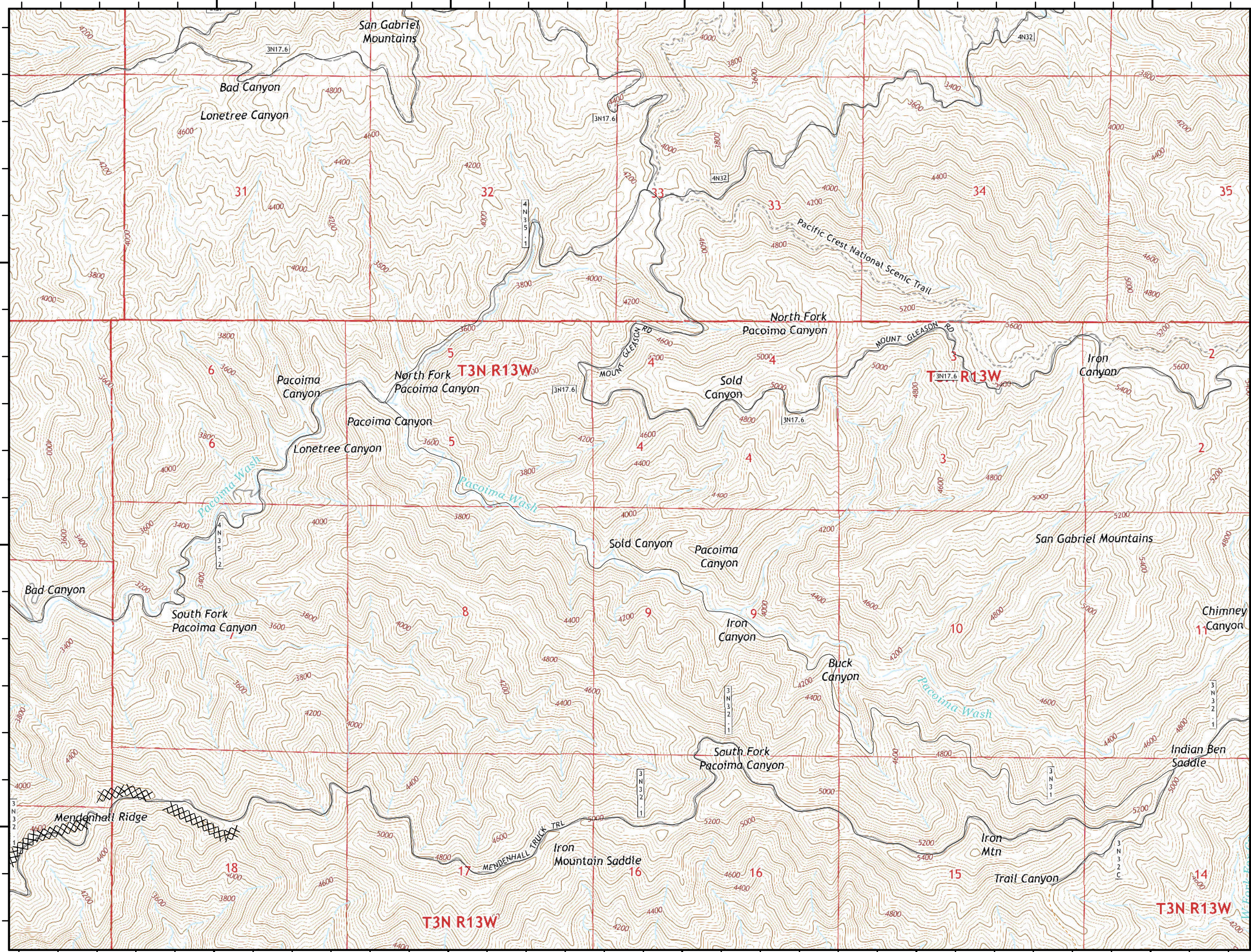
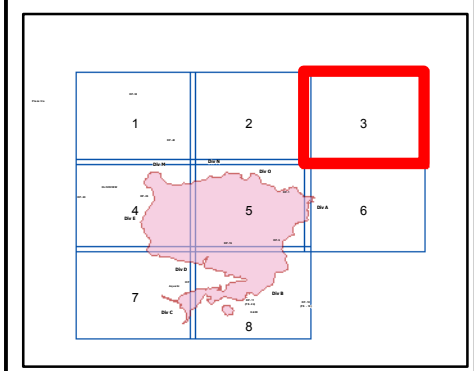
Incident Action Plan Map

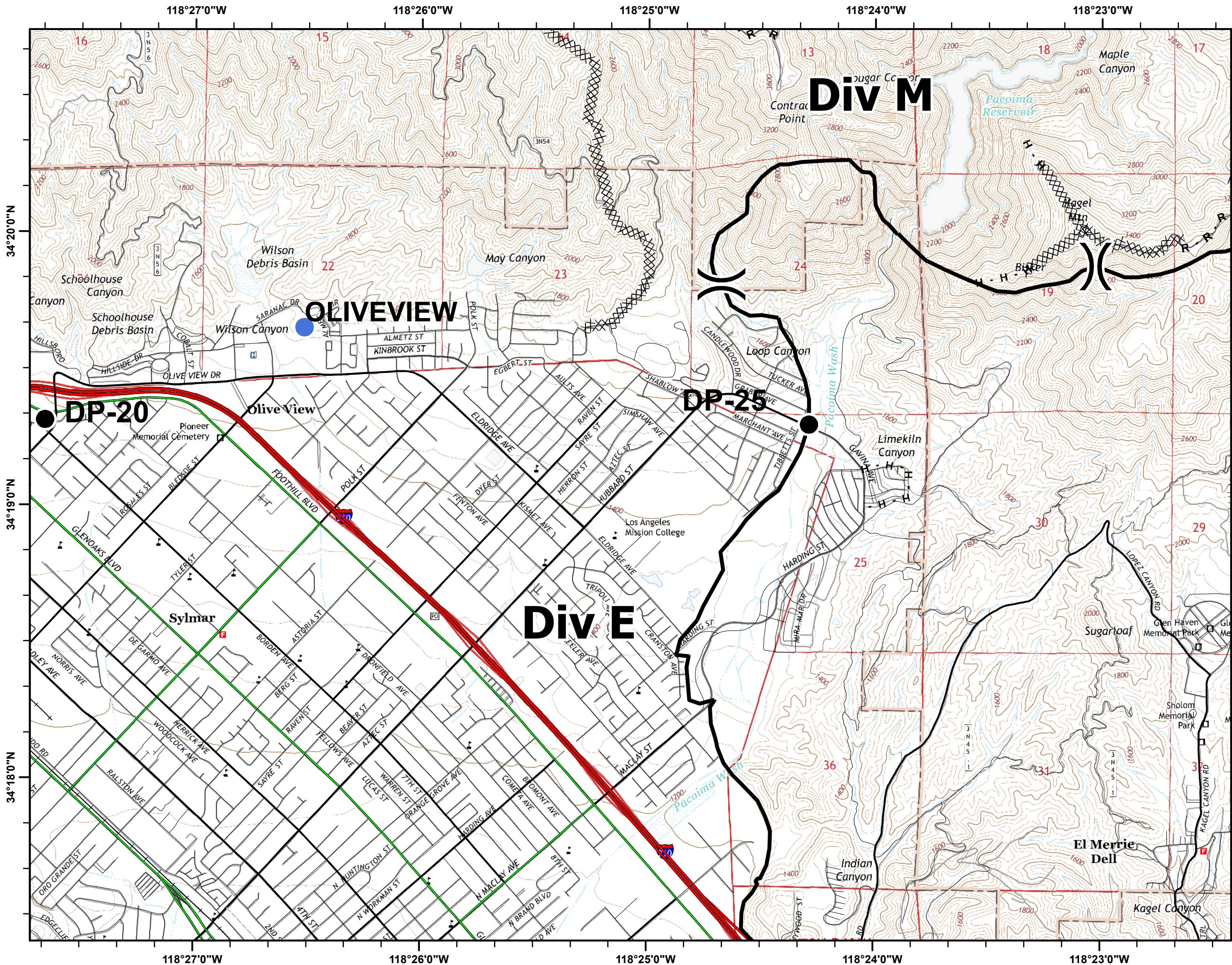
CREEK FIRE

CA-LAC-362189
12/11/17-12/15/17

Page 3 of 8

- Branch
- Division
- Drop Point
- Staging Area
- Helispot
- Incident Command Post
- Uncontrolled Fire Edge
- Completed Dozer Line
- Completed Line
- Hand Line
- Road as Completed Line





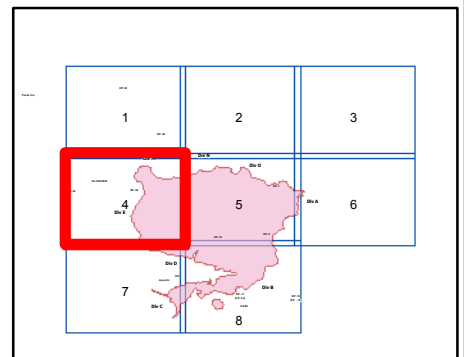
Incident Action Plan Map

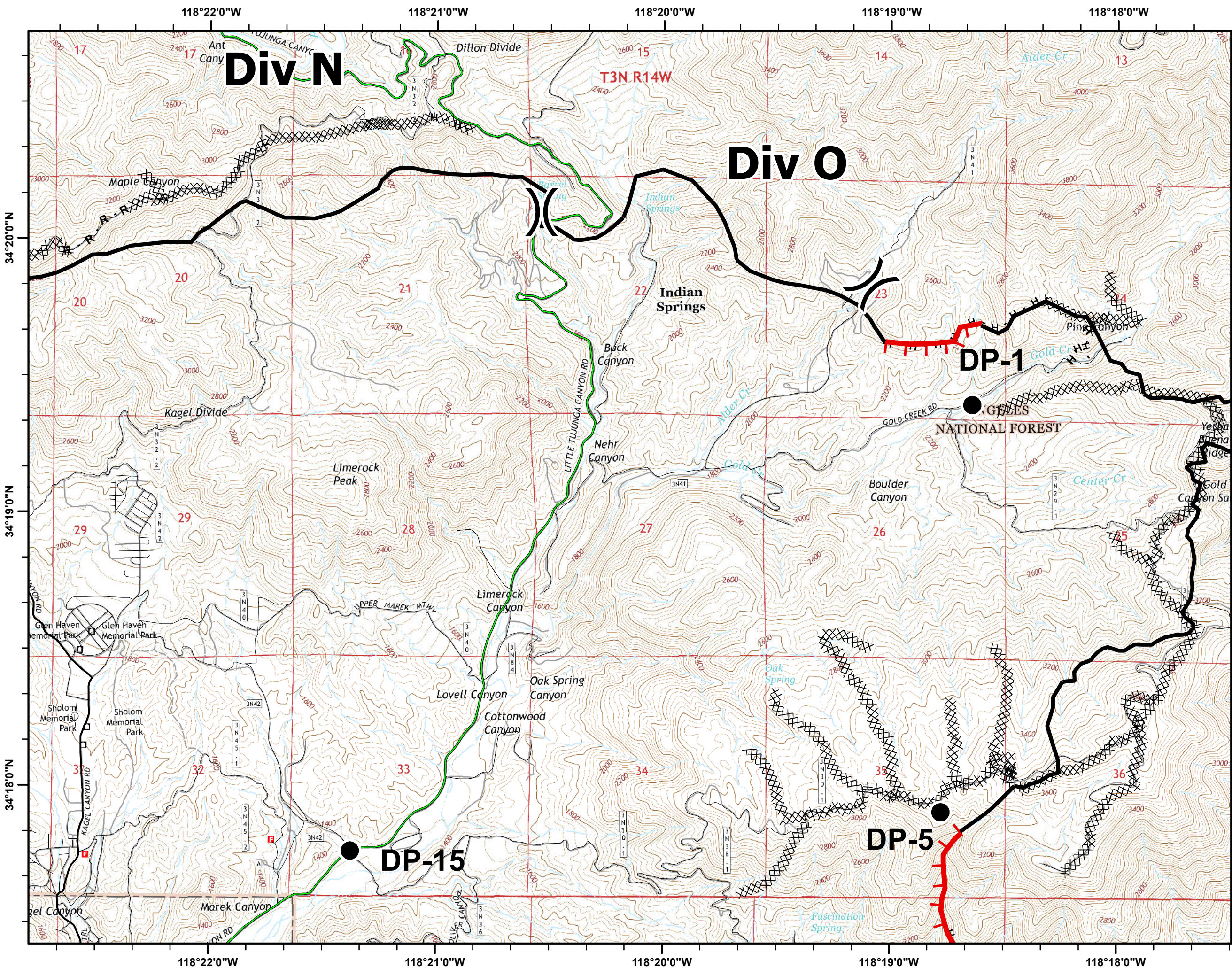
CREEK FIRE

CA-LAC-362189
12/11/17-12/15/17

Page 4 of 8

- Branch
- Division
- Drop Point
- Staging Area
- Helispot
- Incident Command Post
- Uncontrolled Fire Edge
- Completed Dozer Line
- Completed Line
- Hand Line
- Road as Completed Line



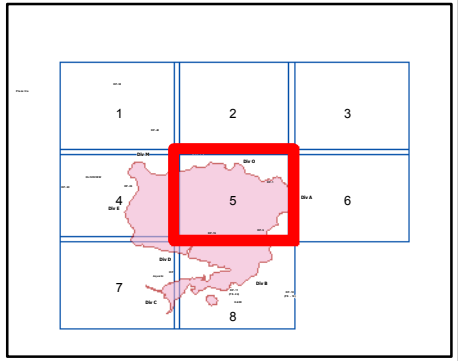


Incident Action Plan Map

CREEK FIRE
 CA-LAC-362189
 12/11/17-12/15/17

Page 5 of 8

- Branch
- Division
- Drop Point
- Staging Area
- Helispot
- Incident Command Post
- Uncontrolled Fire Edge
- Completed Dozer Line
- Completed Line
- Hand Line
- Road as Completed Line



118°17'0"W

118°16'0"W

118°15'0"W

118°14'0"W

118°13'0"W







Incident Action Plan Map

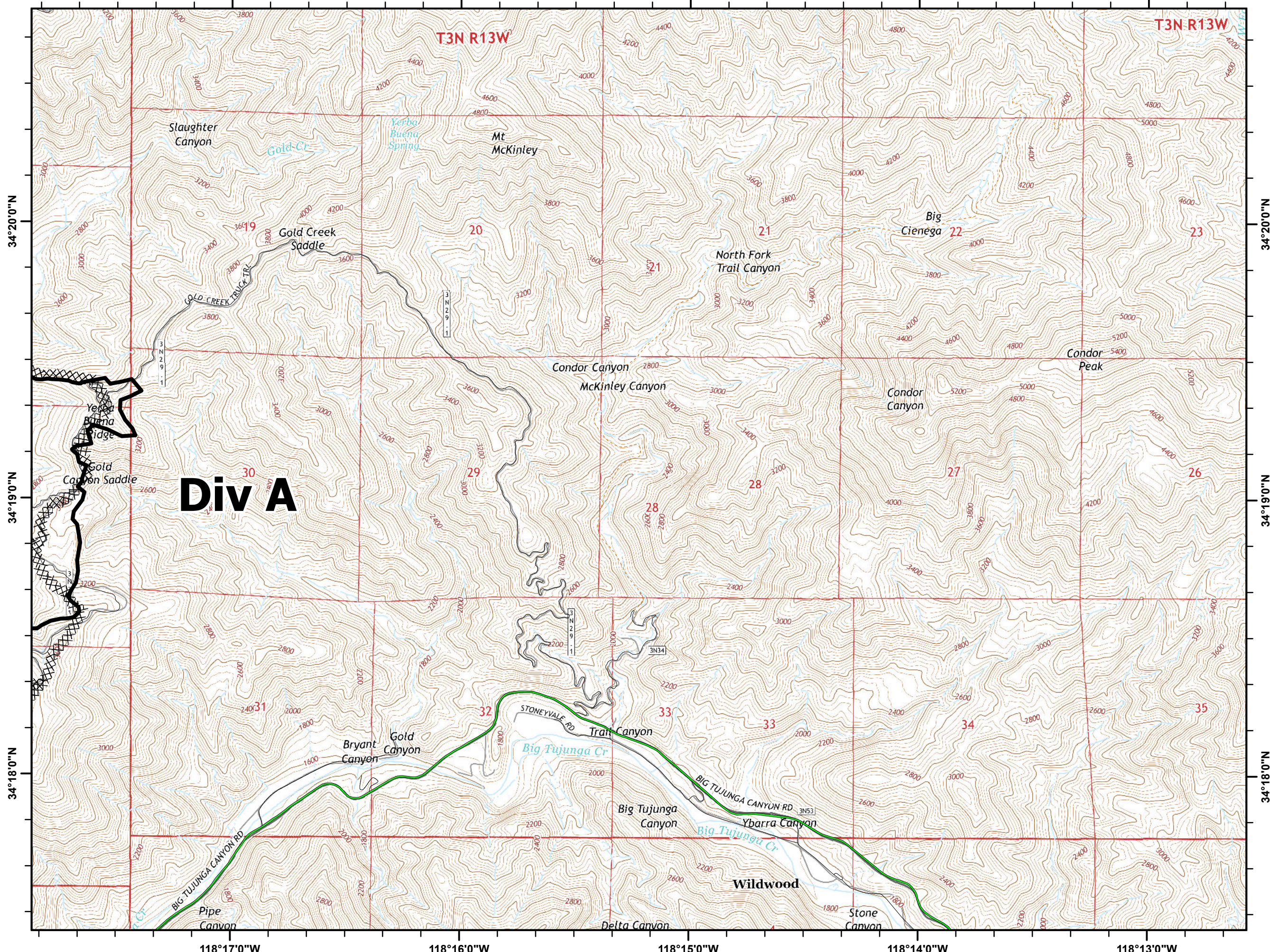
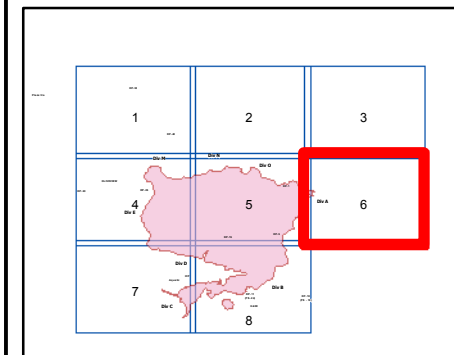
CREEK FIRE

CA-LAC-362189

12/11/17-12/15/17

Page 6 of 8

-  Branch
-  Division
-  Drop Point
-  Staging Area
-  Helispot
-  Incident Command Post
-  Uncontrolled Fire Edge
-  Completed Dozer Line
-  Completed Line
-  Hand Line
-  Road as Completed Line



Div A

118°27'0"W

118°26'0"W

118°25'0"W

118°24'0"W

118°23'0"W



Incident Action Plan Map

CREEK FIRE

CA-LAC-362189
12/11/17-12/15/17

Page 7 of 8

Div D

Aquatic ICP

Div C

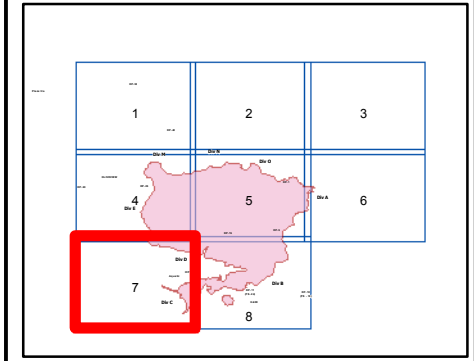
LOS ANGELES

SAN FERNANDO

Pacoima

Pacoima

- Branch
- Division
- Drop Point
- Staging Area
- Helispot
- Incident Command Post
- Uncontrolled Fire Edge
- Completed Dozer Line
- Completed Line
- Hand Line
- Road as Completed Line



118°27'0"W

118°26'0"W

118°25'0"W

118°24'0"W

118°23'0"W

34°17'0"N

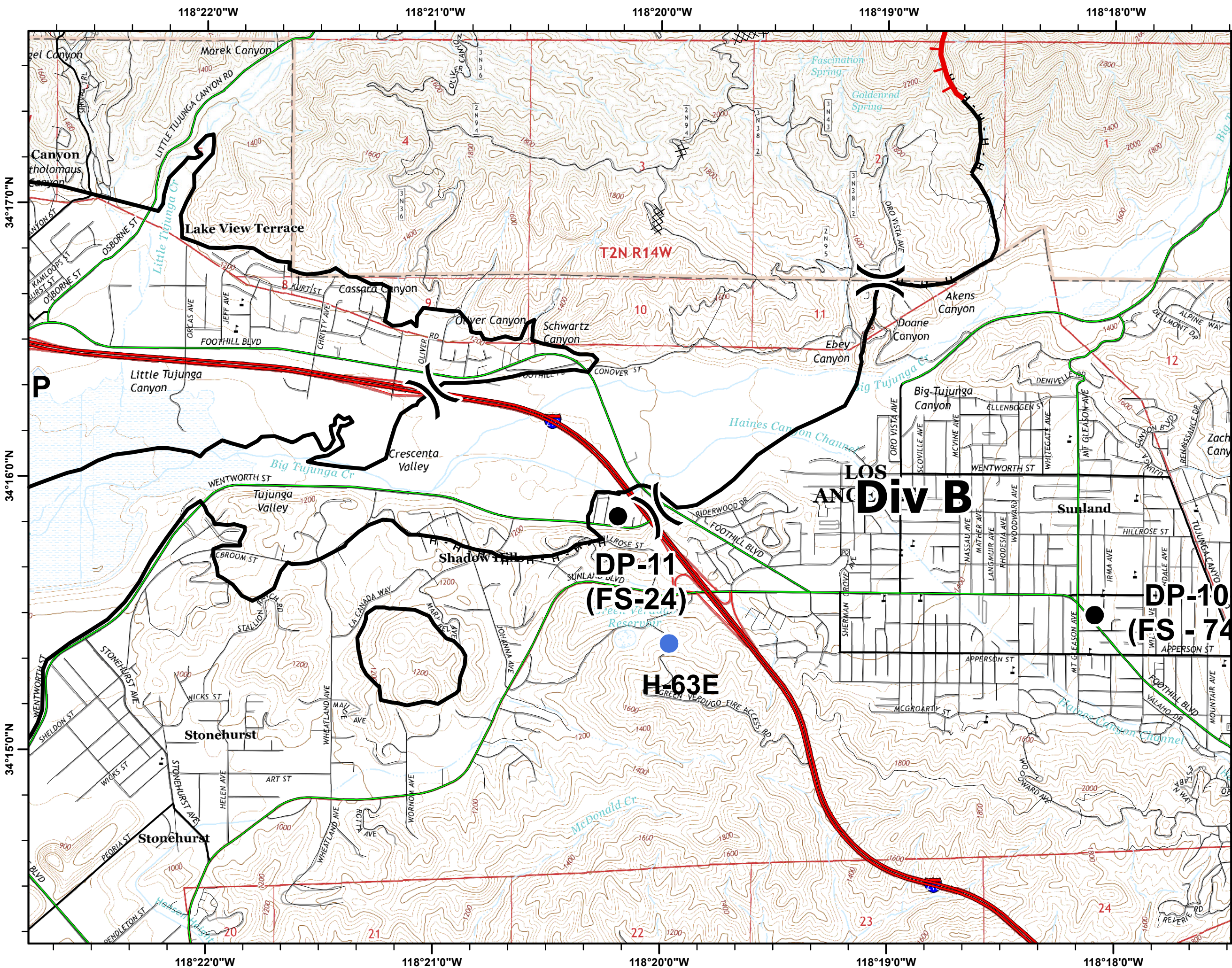
34°17'0"N

34°16'0"N

34°16'0"N

34°15'0"N

34°15'0"N



Incident Action Plan Map

CREEK FIRE

CA-LAC-362189
12/11/17-12/15/17

Page 8 of 8

- Branch
- Division
- Drop Point
- Staging Area
- Helispot
- Incident Command Post
- Uncontrolled Fire Edge
- Completed Dozer Line
- Completed Line
- Hand Line
- Road as Completed Line

