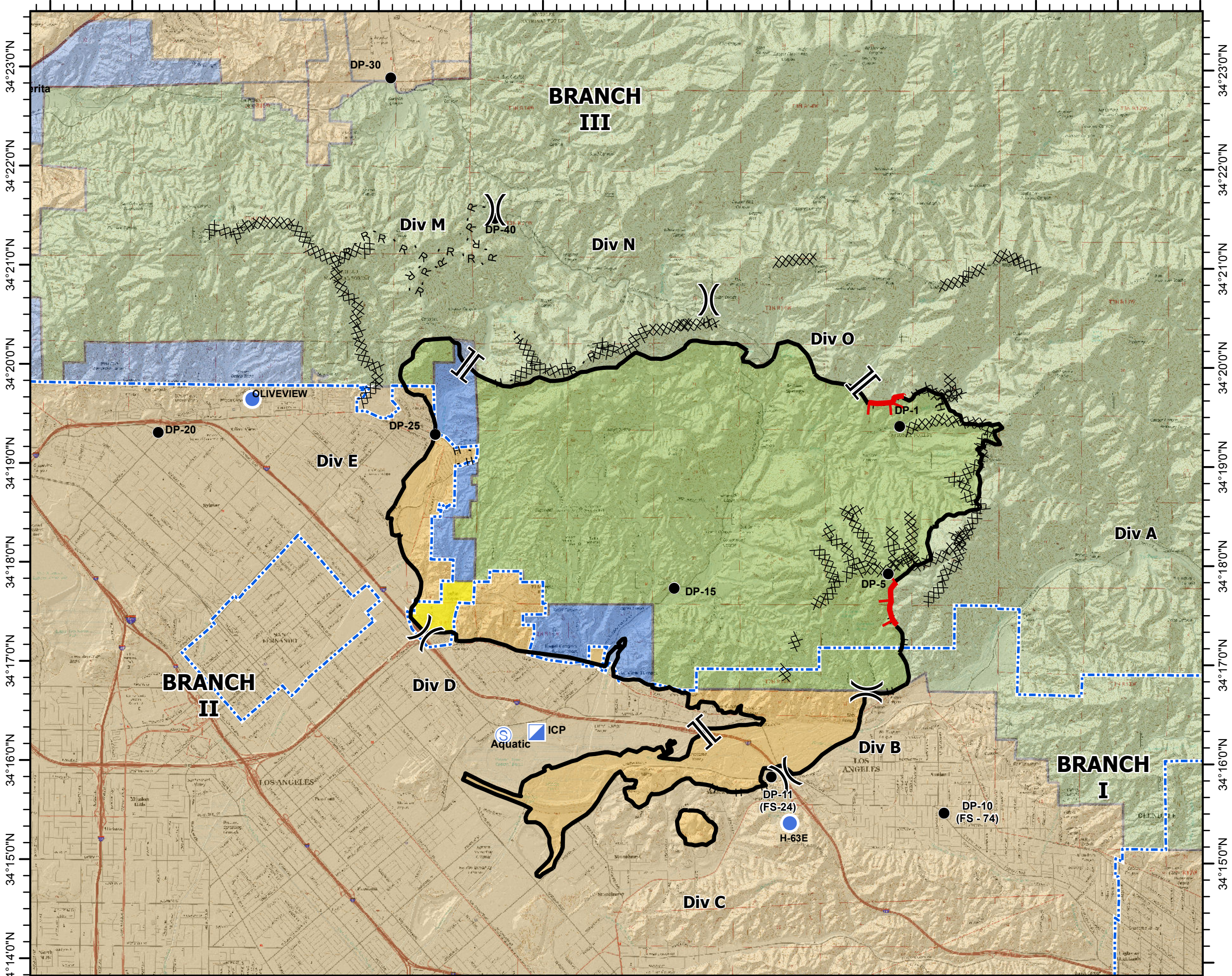


118°29'0"W 118°28'0"W 118°27'0"W 118°26'0"W 118°25'0"W 118°24'0"W 118°23'0"W 118°22'0"W 118°21'0"W 118°20'0"W 118°19'0"W 118°18'0"W 118°17'0"W 118°16'0"W 118°15'0"W



118°29'0"W 118°28'0"W 118°27'0"W 118°26'0"W 118°25'0"W 118°24'0"W 118°23'0"W 118°22'0"W 118°21'0"W 118°20'0"W 118°19'0"W 118°18'0"W 118°17'0"W 118°16'0"W 118°15'0"W

# DPA MAP

## Creek Incident

CA LAC 362189  
12/11/2017  
Final Acres: 15,619



- Division
- Branch
- Drop Point
- Staging Area
- Incident Command Post
- Helispot
- Uncontrolled Fire Edge
- Completed Line
- Completed Dozer Line
- H - H -Hand Line
- R - R -Road as Completed Line
- City Boundary

**Direct Protection Areas**

	Federal - 11,366 acres (73%)
	State - 1145 acres (7%)
	Local (LA City) - 2942 acres (19%)
	Local (LA County) - 166 acres (1%)

