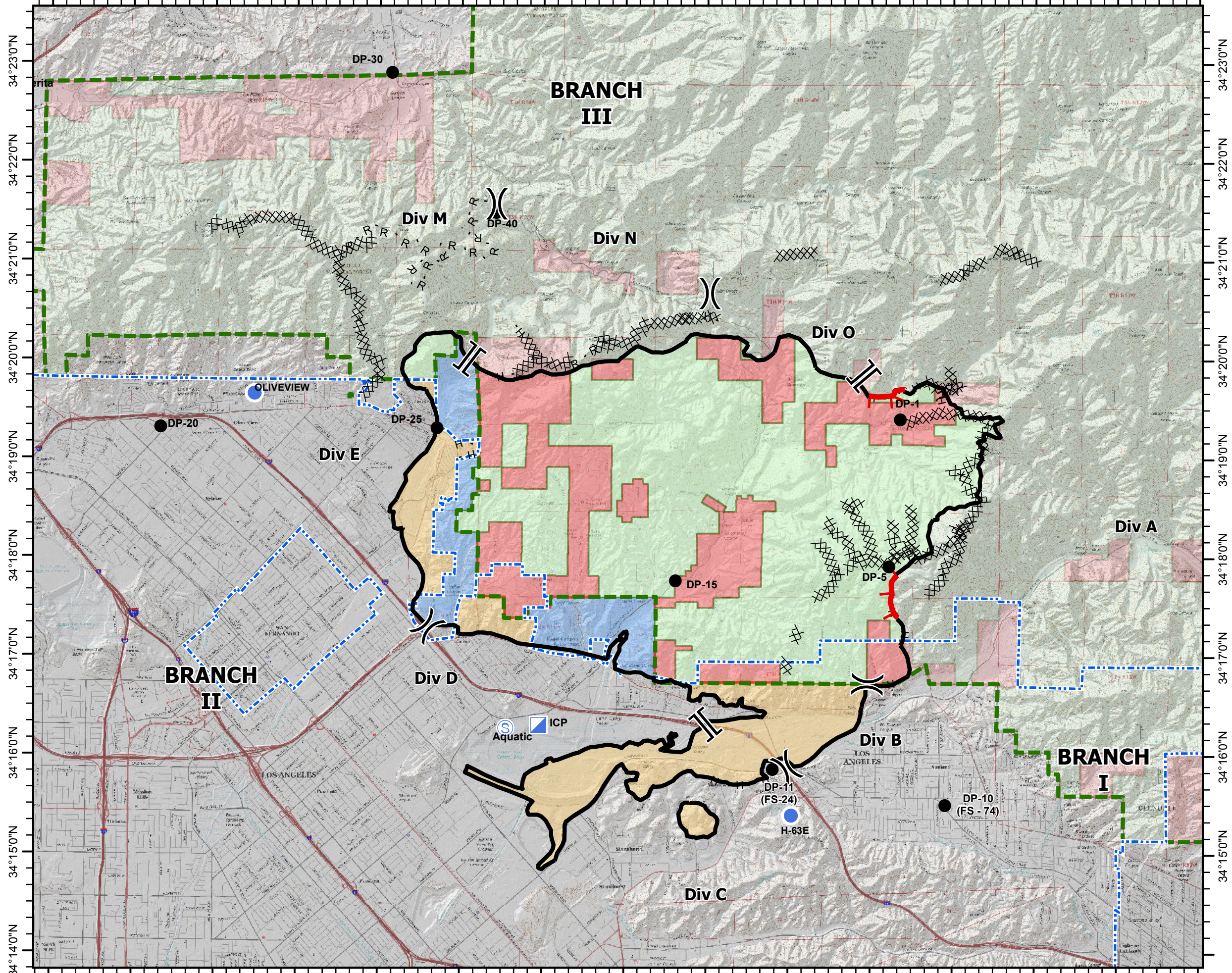


118°29'0"W 118°28'0"W 118°27'0"W 118°26'0"W 118°25'0"W 118°24'0"W 118°23'0"W 118°22'0"W 118°21'0"W 118°20'0"W 118°19'0"W 118°18'0"W 118°17'0"W 118°16'0"W 118°15'0"W



118°29'0"W 118°28'0"W 118°27'0"W 118°26'0"W 118°25'0"W 118°24'0"W 118°23'0"W 118°22'0"W 118°21'0"W 118°20'0"W 118°19'0"W 118°18'0"W 118°17'0"W 118°16'0"W 118°15'0"W

OWNERSHIP MAP

Creek Incident

CA LAC 362189

12/11/2017

Final Acres: 15,619



() Division

[] Branch

● Drop Point

⊙ Staging Area

▣ Incident Command Post

● Helispot

— Uncontrolled Fire Edge

— Completed Line

XXXXX Completed Dozer Line

H - H Hand Line

R - R Road as Completed Line

--- LA City Boundary

--- USFS Admin Boundary

Within USFS Administrative Boundary

■ Natl Forest - 7973 acres (51%)

■ Private - 3619 acres (23%)

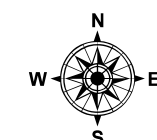
Within LA City Jurisdiction*

■ Private - 2711 acres (17%)

Within LA County Jurisdiction

■ Private - 1316 acres (9%)

*Acreage does not include City Jurisdiction within USFS Admin Boundary



0 0.5 1 Miles

1:70,000
NAD 83